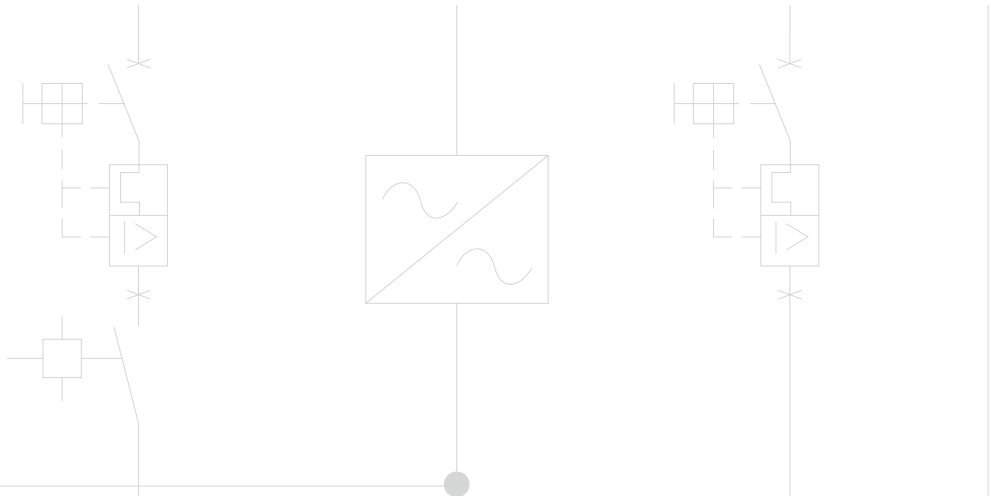
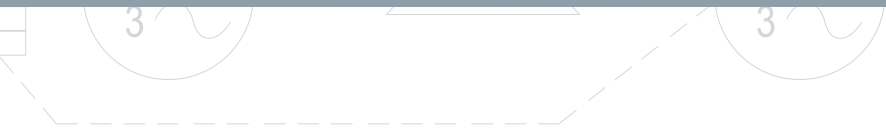


High Capacity Molded Case Circuit Breaker & Air Circuit Breaker



A decorative graphic consisting of a grid of blue squares in various shades (light blue, medium blue, dark blue). The squares are arranged in two columns. At the bottom right of this graphic is the WEG logo, which consists of the letters 'WEG' in a stylized, bold, blue font.



High Capacity Circuit Protection

Full range protection for currents from 20 to 6300 A

WEG's high capacity molded case circuit breakers and air circuit breakers, are available in 3 or 4 poles¹ and comprehend a large current rating from 20 to 6300 A with a short circuit breaking capacity of 85 to 100 kA for the ACW line and 65 to 120 kA for the ABW line @ 380/415 Vac.



ACW Line

The ACW line of MCCB (molded case circuit breakers) is assembled according to IEC60947-2 and UL489 and, along with its accessories, offers you the best solution for circuit controlling and protection against short circuit and overloads. Besides, it can also be used as the main switch of your circuit.

Its large short circuit breaking capacity makes the ACW fit to the most severe applications, where the short circuit current is very high and reliability is the key factor.

The internal plug-in accessories are easily assembled in front of the circuit breaker, without the need of further adjustments, making the assembly time much faster.

Have it your way

The ACW line is available in four frames, as you can find on table 1, and four different protection types:

- FTU: Fixed thermal and fixed magnetic²
- FMU: Adjustable Thermal and fixed Magnetic protections
- ATU: Adjustable Thermal and Magnetic protections
- ETS: Electronic LSI protections³
- MTU: Magnetic protection only³

For further information on the protection types, ratings, and models, please see the full catalogue.

1) 4 poles version under request.

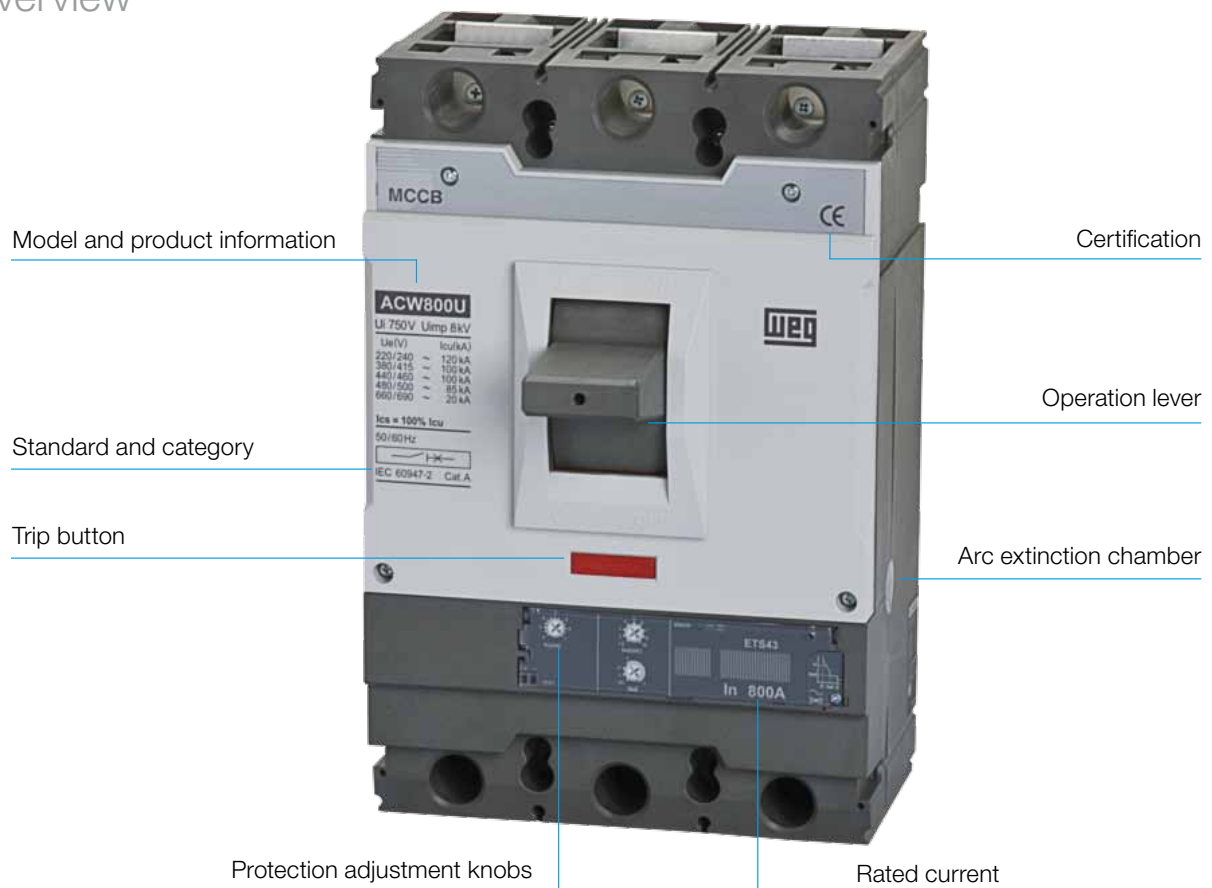
2) Available for UL version only.

3) Available for IEC version only.

Certifications



Overview



Technical Data

Current and protection range for IEC version

Frame		160				250				630				800						
Model		ACW100		ACW160		ACW101		ACW161		ACW250		ACW400		ACW630		ACW800				
Version		IEC 60947-2																		
Rated current - In (A)	FMU protection	20, 25, 32, 40, 50, 63, 80, 100				125, 160				-				-				-		
	ATU protection	-				-				-				200, 250		-		-		
	ETS protection	-				-				-				400		630		800		
	MTU protection	-				-				20, 50, 100		160		220		320		500		630
Type		H	V	H	V	H	V	H	V	H	V	H	V	H	V	H	V	U		
Short circuit maximum breaking capacity - Icu (kA)	220/240 Vac	100	200	100	200	120	200	120	200	120	200	120	200	120	200	120	200	120		
	380/415 Vac	85	150	85	150	85	150	85	150	85	150	85	150	85	150	85	150	100		
	440/460 Vac	70	130	70	130	70	130	70	130	70	130	70	130	70	130	70	130	100		
	480/500/525 Vac	50	65	50	65	65	85	65	85	65	85	65	85	65	85	65	85	85		
	660/690 Vac	8	10	8	10	15	20	15	20	15	20	20	35	20	35	20	35	20		
	250 Vdc (2 poles in series)	65	100	65	100	85	100	85	100	85	100	85	100	-	100	-	100	85		

Current and protection range for UL version

Model		ACW125		ACW250		ACW400		ACW800	
Version		UL489							
Rated current - In (A)	FMU protection	-		160, 200, 250		300, 400		500, 600, 800	
	FTU protection	15, 20, 30, 40, 50, 60, 80, 100, 125		-		-		-	
	ATU protection	-		160, 200, 250		300, 400		500, 600, 800	
Type		P	W	P	W	P	W	P	W
Short circuit maximum breaking capacity - Icu (kA)	480 Vac	35	65	35	65	35	65	35	65
	600 Vac	10	14	10	18	14	20	18	25

Accessories

The ACW line is fitted with several plug-in accessories, such as:

- Alarm contacts
- Auxiliary contacts
- Discharge coil
- Undervoltage coil
- Motorized operation
- Rotary handles
- and others



IEC Version

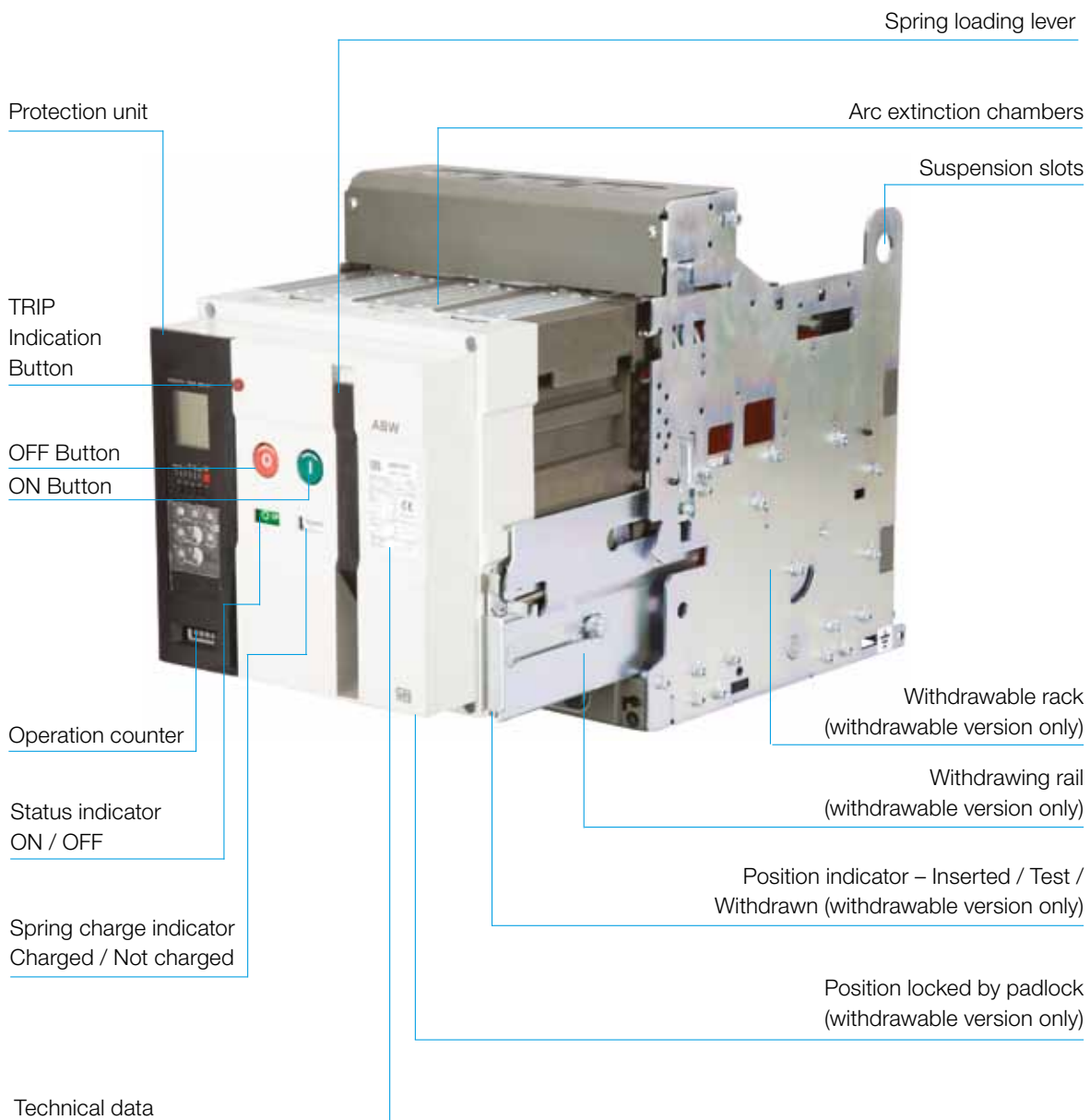
UL Version

ABW Line

The air circuit breaker line was specially designed for the protection of high power and low voltage circuits from 640 to 6300 A according to IEC 60947-2.

It is available in two versions: 3 or 4 Poles.

Overview



Technical Data

Higher breaking capacity

The ABW short circuit extinction chamber was designed to provide a better performance in short-circuit faults. Its breaking capacity is shown on table 2 for several voltages.

Frame	220/380/ 415 Vac	440/480/ 500 Vac	550/600/ 690 Vac
ABW16	65 kA	65 kA	50 kA
ABW20...32	85 kA	85 kA	85 kA
ABW40/50	100 kA	100 kA	85 kA
ABW63	120 kA	120 kA	100 kA

Table 2: Short circuit breaking capacity



Fixed vs Withdrawable

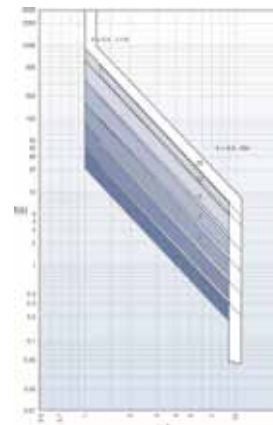
You can find the ABW in either fixed or withdrawable version, whatever fits your application best. The withdrawable air circuit breaker is the perfect solution for you to have a secure and fast maintenance of your system.



Electronic protection

ABW air circuit breaker has two types of electronic protection units, each with the following protections:

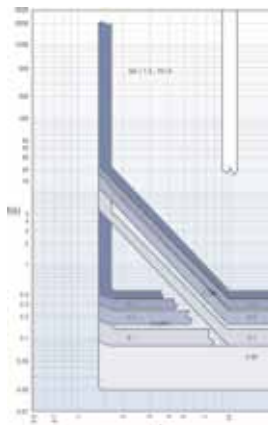
- **A type:** LSIG protection (overload, timed short-circuit, instantaneous short circuit and ground fault);
- **P type:** LSIG protection + over and under current protection, out of range frequency, voltage/current unbalance and pre trip alarm.



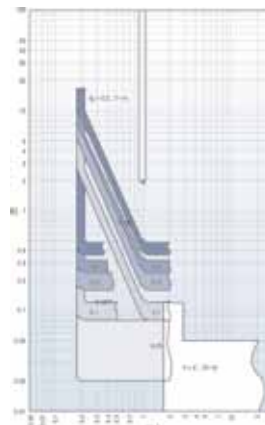
L - Overload adjustment. $I_r \times t_r$

Communication

WEG's air circuit breaker is able to communicate via ProfiBus or ModBus.



S - Timed short-circuit adjustment. $I_r \times t_r$



I - Instantaneous short-circuit and G - ground fault adjustment. $I_r \times t_r$



Complete range of accessories

Standard Factory Accessories

Closing and opening coils

These coils are used for closing and opening the circuit breaker from a distance, with the use of external electric pulses.



Auxiliary and alarm contacts

The auxiliary contacts (5NO + 5NC) can be used for several applications and the alarm contact indicates trigger occurrence for any protection functions.



Optional Accessories

Motorized operation

Allows the automatic charge of the circuit breaker's spring. When the circuit breaker is switched off, the motor will automatically recharge the spring. The user can still manually charge it if wanted.



Undervoltage coil

Breaks of the circuit if the voltage gets between 0.4 and 0.6 Un.



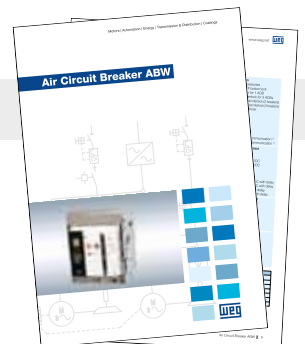
Condenser TRIP device

When energy is off, this item allows the user to switch the circuit breaker off. It consists of a little box with capacitors for energy storage.



Mechanical interlock

For two or three circuit breakers, this device allows only one circuit breaker to be switched on at the time.



For more accessories and further information please view the full catalogue.

Certifications



WEG Worldwide Operations

ARGENTINA

WEG EQUIPAMIENTOS
ELECTRICOS S.A.
(Headquarters San
Francisco-Cordoba)
Sgo. Pampiglione 4849
Parque Industrial San Francisco
2400 - San Francisco
Phone: +54 (3564) 421484
Fax: +54 (3564) 421459
info-ar@weg.net
www.weg.net/ar

AUSTRALIA

WEG AUSTRALIA PTY. LTD.
3 Dalmore Drive
Carribean Park Industrial Estate
Scoresby VIC 3179 - Melbourne
Phone: 61 (3) 9765 4600
Fax: 61 (3) 9753 2088
info-au@weg.net
www.weg.net/au

BELGIUM

WEG BENELUX S.A.
Rue de l'Industrie 30 D,
1400 Nivelles
Phone: + 32 (67) 88-8420
Fax: + 32 (67) 84-1748
info-be@weg.net
www.weg.net/be

CHILE

WEG CHILE S.A.
Los Canteros 8600
La Reina - Santiago
Phone: (56-2) 784 8900
Fax: (56-2) 784 8950
info-cl@weg.net
www.weg.net/cl

CHINA

WEG (NANTONG) ELECTRIC
MOTOR MANUFACTURING CO.,
LTD.
No. 128# - Xinkai South Road,
Nantong Economic &
Technical Development Zone,
Nantong, Jiangsu Province.
Phone: (86) 0513-85989333
Fax: (86) 0513-85922161
info-cn@weg.net
www.weg.net/cn

COLOMBIA

WEG COLOMBIA LTDA
Calle 46A N82 - 54
Portería II - Bodega 7 - San
Cayetano II - Bogotá
Phone: (57 1) 416 0166
Fax: (57 1) 416 2077
info-co@weg.net
www.weg.net/co

DENMARK

WEG SCANDINAVIA DENMARK
Sales Office of WEG
Scandinavia AB
Anelysparken 43B
True
8381 Tilst - Denmark
Phone: +45 86 24 22 00
Fax : +45 86 24 56 88
info-se@weg.net
www.weg.net/se

FRANCE

WEG FRANCE SAS
ZI de Chenes - Le Loup
13 Rue du Morellon - BP 738
38297 Saint Quentin Fallavier
Phone: +33 (0) 4 74 99 11 35
Fax: +33 (0) 4 74 99 11 44
info-fr@weg.net
www.weg.net/fr

GERMANY

WEG GERMANY GmbH
Industriegebiet Türnich 3
Geigerstraße 7
50169 Kerpen-Türnich
Phone: +49 (0)2237/9291-0
Fax: +49 (0)2237/9292-200
info-de@weg.net
www.weg.net/de

GHANA

ZEST ELECTRIC GHANA
LIMITED - WEG Group
15, Third Close Street Airport
Residential Area, Accra PMB CT
175, Cantonments
Phone: 233 30 27 664 90
Fax: 233 30 27 664 93
info@zestghana.com.gh
www.zestghana.com.gh

INDIA

WEG ELECTRIC (INDIA) PVT.
LTD.
#38, Ground Floor, 1st Main
Road, Lower Palace Orchards,
Bangalore - 560 003
Phone(s): +91-80-4128 2007
+91-80-4128 2006
Fax: +91-80-2336 7624
info-in@weg.net
www.weg.net/in

ITALY

WEG ITALIA S.R.L.
V.le Brianza 20 - 20092 - Cinisello
Balsamo - Milano
Phone: (39) 02 6129-3535
Fax: (39) 02 6601-3738
info-it@weg.net
www.weg.net/it

JAPAN

WEG ELECTRIC MOTORS
JAPAN CO., LTD.
Yokohama Sky Building 20F,
2-19-12 Takashima,
Nishi-ku, Yokohama City,
Kanagawa, Japan 220-001
Phone: (81) 45 440 6063
info-jp@weg.net
www.weg.net/jp

MEXICO

WEG MEXICO, S.A. DE C.V.
Carretera Jorobas-Tula Km. 3.5,
Manzana 5, Lote 1
Fraccionamiento Parque
Industrial - Huehuetoca,
Estado de México - C.P. 54680
Phone: + 52 (55) 5321 4275
Fax: + 52 (55) 5321 4262
info-mx@weg.net
www.weg.net/mx

NETHERLANDS

WEG NETHERLANDS
Sales Office of
WEG Benelux S.A.
Hanzepoort 23C
7575 DB Oldenzaal
Phone: +31 (0) 541-571080
Fax: +31 (0) 541-571090
info-nl@weg.net
www.weg.net/nl

PORTUGAL

WEG EURO - INDÚSTRIA
ELÉCTRICA, S.A.
Rua Eng. Frederico Ulrich
Apartado 6074
4476-908 - Maia
Phone: +351 229 477 705
Fax: +351 229 477 792
info-pt@weg.net
www.weg.net/pt

RUSSIA

WEG RUSSIA
Russia, 194292, St. Petersburg,
Prospekt Kultury 44, Office 419
Phone: +7(812)363-21-72
Fax: +7(812)363-21-73
info-ru@weg.net
www.weg.net/ru

SOUTH AFRICA

ZEST ELECTRIC MOTORS
(PTY) LTD. WEG Group
47 Galaxy Avenue, Linbro
Business Park - Gauteng Private
Bag X10011 - Sandton, 2146
Johannesburg
Phone: (27-11) 723-6000
Fax: (27-11) 723-6001
info@zest.co.za
www.zest.co.za

SPAIN

WEG IBERIA S.L.
Avenida de la Industria,25
28823 Coslada - Madrid
Phone: (34) 916 553 008
Fax : (34) 916 553 058
info-es@weg.net
www.weg.net/es

SINGAPORE

WEG SINGAPORE PTE LTD
159, Kampong Ampat,
#06-02A KA PLACE.
Singapore 368328.
Phone: +65 6858 9081
Fax: +65 6858 1081
info-sg@weg.net
www.weg.net/sg

SWEDEN

WEG SCANDINAVIA AB
Box 10196
Verkstadgatan 9
434 22 Kungsbacka
Phone: (46) 300 73400
Fax: (46) 300 70264
info-se@weg.net
www.weg.net/se

UK

WEG ELECTRIC
MOTORS (U.K.) LTD.
28/29 Walkers Road
Manorside Industrial Estate
North Moons Moat - Redditch
Worcestershire B98 9HE
Phone: 44 (0)1527 596-748
Fax: 44 (0)1527 591-133
info-uk@weg.net
www.weg.net/uk

UNITED ARAB EMIRATES

WEG MIDDLE EAST FZE
JAFZA - JEBEL ALI FREE ZONE
Tower 18, 19th Floor,
Office LB 18 1905
P.O. Box 262508 - Dubai
Phone: +971 (4) 8130800
Fax: +971 (4) 8130811
info-ae@weg.net
www.weg.net/ae

USA

WEG ELECTRIC CORP.
6655 Sugarloaf Parkway,
Duluth, GA 30097
Phone: 1-678-249-2000
Fax: 1-770-338-1632
info-us@weg.net
www.weg.net/us

VENEZUELA

WEG INDUSTRIAS VENEZUELA C.A.
Avenida 138-A
Edificio Torre Banco Occidental de
Descuento, Piso 6 Oficina 6-12
Urbanizacion San Jose de Tarbes
Zona Postal 2001
Valencia, Edo. Carabobo
Phone(s): (58) 241 8210582
(58) 241 8210799
(58) 241 8211457
Fax: (58) 241 8210966
info-ve@weg.net
www.weg.net/ve



WEG Equipamentos Elétricos S.A.
International Division
Av. Prefeito Waldemar Grubba, 3000
89256-900 - Jaraguá do Sul - SC - Brazil
Phone: 55 (47) 3276-4002
Fax: 55 (47) 3276-4060
www.weg.net

