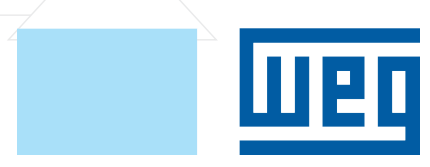
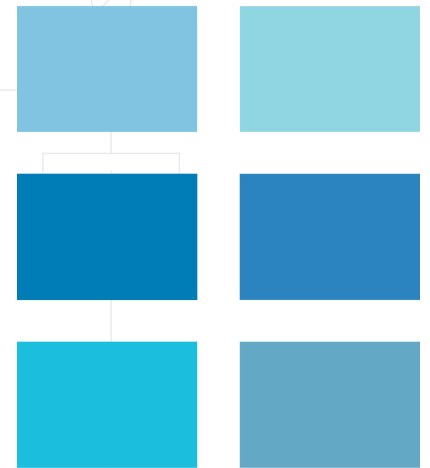
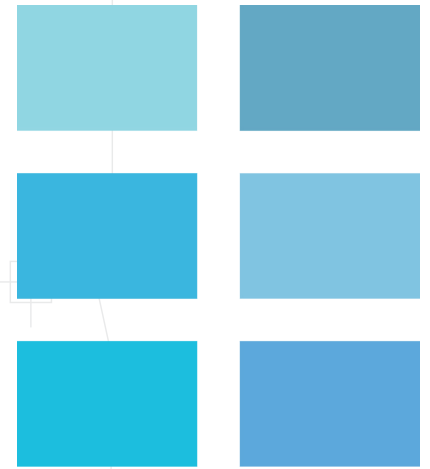
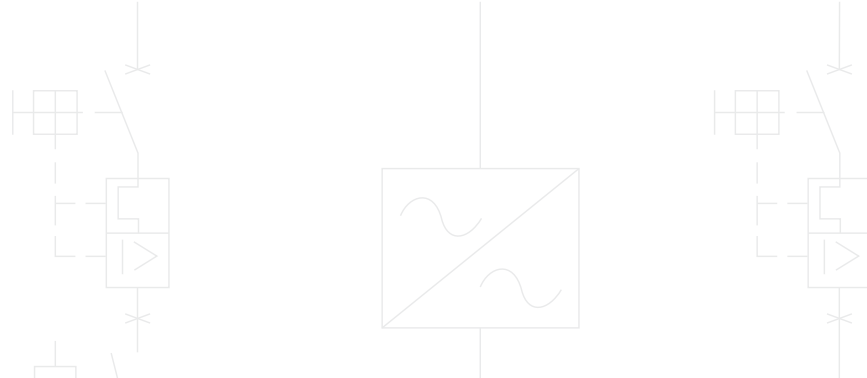


# UMBW

## Thermal-Magnetic MCB



# UMBW-UL489 and UL1077 Listed

Introducing the New WEG UMBW Series Thermal-Magnetic Miniature Circuit Breakers. This new offering includes both UL489 and UL1077 approvals to provide a solution for circuit & equipment protection in Industrial Electrical equipment. The UMBW has a range from 1 to 63Amps, available in 1,2, 3 poles, and B, C, D trip curves.

## Standard Features

- AC & DC voltages available in one Series
- UL489 Branch Circuit protective device
- UL1077 Equipment protection
- 17.5mm width per pole
- Visual status indication
- Positive trip-free snap action mechanism to ensure reliable switching
- Cutable Bus Bar connecting system



## UMBW Catalog Number Sequence

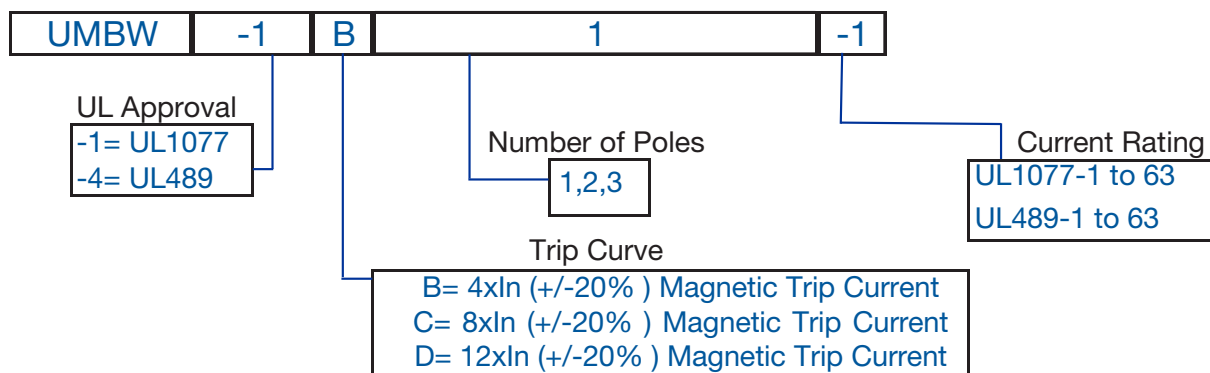




Table intended as reference only and not to create part numbers.

# Poles	Ampacity	Catalog Number			Max Voltage	List Price	Multiplier
		B CURVE	C CURVE	D CURVE			
<b>1 POLE</b> 	1	UMBW-1B1-1	UMBW-1C1-1	UMBW-1D1-1	277 VAC	<b>\$25.00</b>	Z12
	1.5	UMBW-1B1-1.5 <sup>1</sup>	UMBW-1C1-1.5 <sup>1</sup>	UMBW-1D1-1.5 <sup>1</sup>			
	2	UMBW-1B1-2	UMBW-1C1-2	UMBW-1D1-2			
	3	UMBW-1B1-3	UMBW-1C1-3	UMBW-1D1-3			
	4	UMBW-1B1-4	UMBW-1C1-4	UMBW-1D1-4			
	5	UMBW-1B1-5	UMBW-1C1-5	UMBW-1D1-5			
	6	UMBW-1B1-6	UMBW-1C1-6	UMBW-1D1-6			
	7	UMBW-1B1-7 <sup>1</sup>	UMBW-1C1-7 <sup>1</sup>	UMBW-1D1-7 <sup>1</sup>			
	8	UMBW-1B1-8 <sup>1</sup>	UMBW-1C1-8 <sup>1</sup>	UMBW-1D1-8 <sup>1</sup>			
	10	UMBW-1B1-10	UMBW-1C1-10	UMBW-1D1-10			
	12	UMBW-1B1-12	UMBW-1C1-12	UMBW-1D1-12			
	13	UMBW-1B1-13 <sup>1</sup>	UMBW-1C1-13 <sup>1</sup>	UMBW-1D1-13 <sup>1</sup>			
	15	UMBW-1B1-15	UMBW-1C1-15	UMBW-1D1-15			
	16	UMBW-1B1-16	UMBW-1C1-16	UMBW-1D1-16			
	20	UMBW-1B1-20	UMBW-1C1-20	UMBW-1D1-20			
	25	UMBW-1B1-25	UMBW-1C1-25	UMBW-1D1-25			
	30	UMBW-1B1-30 <sup>1</sup>	UMBW-1C1-30 <sup>1</sup>	UMBW-1D1-30 <sup>1</sup>			
	32	UMBW-1B1-32	UMBW-1C1-32	UMBW-1D1-32			
	35	UMBW-1B1-35 <sup>1</sup>	UMBW-1C1-35 <sup>1</sup>	UMBW-1D1-35 <sup>1</sup>			
	40	UMBW-1B1-40	UMBW-1C1-40	UMBW-1D1-40			
50	UMBW-1B1-50	UMBW-1C1-50	UMBW-1D1-50				
60	UMBW-1B1-60 <sup>1</sup>	UMBW-1C1-60 <sup>1</sup>	UMBW-1D1-60 <sup>1</sup>				
63	UMBW-1B1-63	UMBW-1C1-63	UMBW-1D1-63				
<b>2 POLE</b> 	1	UMBW-1B2-1	UMBW-1C2-1	UMBW-1D2-1	277/480 VAC	<b>\$48.00</b>	Z12
	1.5	UMBW-1B2-1.5 <sup>1</sup>	UMBW-1C2-1.5 <sup>1</sup>	UMBW-1D2-1.5 <sup>1</sup>			
	2	UMBW-1B2-2	UMBW-1C2-2	UMBW-1D2-2			
	3	UMBW-1B2-3	UMBW-1C2-3	UMBW-1D2-3			
	4	UMBW-1B2-4	UMBW-1C2-4	UMBW-1D2-4			
	5	UMBW-1B2-5	UMBW-1C2-5	UMBW-1D2-5			
	6	UMBW-1B2-6	UMBW-1C2-6	UMBW-1D2-6			
	7	UMBW-1B2-7 <sup>1</sup>	UMBW-1C2-7 <sup>1</sup>	UMBW-1D2-7 <sup>1</sup>			
	8	UMBW-1B2-8 <sup>1</sup>	UMBW-1C2-8 <sup>1</sup>	UMBW-1D2-8 <sup>1</sup>			
	10	UMBW-1B2-10	UMBW-1C2-10	UMBW-1D2-10			
	12	UMBW-1B2-12	UMBW-1C2-12	UMBW-1D2-12			
	13	UMBW-1B2-13 <sup>1</sup>	UMBW-1C2-13 <sup>1</sup>	UMBW-1D2-13 <sup>1</sup>			
	15	UMBW-1B2-15 <sup>1</sup>	UMBW-1C2-15 <sup>1</sup>	UMBW-1D2-15 <sup>1</sup>			
	16	UMBW-1B2-16	UMBW-1C2-16	UMBW-1D2-16			
	20	UMBW-1B2-20	UMBW-1C2-20	UMBW-1D2-20			
	25	UMBW-1B2-25	UMBW-1C2-25	UMBW-1D2-25			
	30	UMBW-1B2-30 <sup>1</sup>	UMBW-1C2-30 <sup>1</sup>	UMBW-1D2-30 <sup>1</sup>			
	32	UMBW-1B2-32	UMBW-1C2-32	UMBW-1D2-32			
	35	UMBW-1B2-35 <sup>1</sup>	UMBW-1C2-35 <sup>1</sup>	UMBW-1D2-35 <sup>1</sup>			
	40	UMBW-1B2-40	UMBW-1C2-40	UMBW-1D2-40			
50	UMBW-1B2-50	UMBW-1C2-50	UMBW-1D2-50				
60	UMBW-1B2-60 <sup>1</sup>	UMBW-1C2-60 <sup>1</sup>	UMBW-1D2-60 <sup>1</sup>				
63	UMBW-1B2-63	UMBW-1C2-63	UMBW-1D2-63				

1) Non-stocked. Contact WEG for availability.



## UMBW

### UL1077

# Poles	Ampacity	Catalog Number			Max Voltage	List Price	Multiplier
		B CURVE	C CURVE	D CURVE			
3 POLE 	1	UMBW-1B3-1	UMBW-1C3-1	UMBW-1D3-1	277/480 VAC	<b>\$65.00</b>	Z12
	1.5	UMBW-1B3-1.5 <sup>1</sup>	UMBW-1C3-1.5 <sup>1</sup>	UMBW-1D3-1.5 <sup>1</sup>			
	2	UMBW-1B3-2	UMBW-1C3-2	UMBW-1D3-2			
	3	UMBW-1B3-3 <sup>1</sup>	UMBW-1C3-3 <sup>1</sup>	UMBW-1D3-3 <sup>1</sup>			
	4	UMBW-1B3-4	UMBW-1C3-4	UMBW-1D3-4			
	5	UMBW-1B3-5 <sup>1</sup>	UMBW-1C3-5 <sup>1</sup>	UMBW-1D3-5 <sup>1</sup>			
	6	UMBW-1B3-6	UMBW-1C3-6	UMBW-1D3-6			
	7	UMBW-1B3-7 <sup>1</sup>	UMBW-1C3-7 <sup>1</sup>	UMBW-1D3-7 <sup>1</sup>			
	8	UMBW-1B3-8 <sup>1</sup>	UMBW-1C3-8 <sup>1</sup>	UMBW-1D3-8 <sup>1</sup>			
	10	UMBW-1B3-10	UMBW-1C3-10	UMBW-1D3-10			
	12	UMBW-1B3-12 <sup>1</sup>	UMBW-1C3-12 <sup>1</sup>	UMBW-1D3-12 <sup>1</sup>			
	13	UMBW-1B3-13 <sup>1</sup>	UMBW-1C3-13 <sup>1</sup>	UMBW-1D3-13 <sup>1</sup>			
	15	UMBW-1B3-15 <sup>1</sup>	UMBW-1C3-15 <sup>1</sup>	UMBW-1D3-15 <sup>1</sup>			
	16	UMBW-1B3-16	UMBW-1C3-16	UMBW-1D3-16			
	20	UMBW-1B3-20	UMBW-1C3-20	UMBW-1D3-20			
	25	UMBW-1B3-25	UMBW-1C3-25	UMBW-1D3-25			
	30	UMBW-1B3-30 <sup>1</sup>	UMBW-1C3-30 <sup>1</sup>	UMBW-1D3-30 <sup>1</sup>			
	32	UMBW-1B3-32	UMBW-1C3-32	UMBW-1D3-32			
	35	UMBW-1B3-35 <sup>1</sup>	UMBW-1C3-35 <sup>1</sup>	UMBW-1D3-35 <sup>1</sup>			
	40	UMBW-1B3-40	UMBW-1C3-40	UMBW-1D3-40			
50	UMBW-1B3-50	UMBW-1C3-50	UMBW-1D3-50				
60	UMBW-1B3-60 <sup>1</sup>	UMBW-1C3-60 <sup>1</sup>	UMBW-1D3-60 <sup>1</sup>				
63	UMBW-1B3-63	UMBW-1C3-63	UMBW-1D3-63				

1) Non-stocked. Contact WEG for availability.


### UL489

# Poles	Ampacity	Catalog Number			Max Voltage	List Price	Multiplier
		B CURVE	C CURVE	D CURVE			
<b>1 POLE</b> 	1	UMBW-4B1-1	UMBW-4C1-1	UMBW-4D1-1	277 VAC /60 VDC	<b>\$53.00</b>	Z12
	1.5	UMBW-4B1-1.5 <sup>1</sup>	UMBW-4C1-1.5 <sup>1</sup>	UMBW-4D1-1.5 <sup>1</sup>			
	2	UMBW-4B1-2	UMBW-4C1-2	UMBW-4D1-2			
	3	UMBW-4B1-3 <sup>1</sup>	UMBW-4C1-3 <sup>1</sup>	UMBW-4D1-3 <sup>1</sup>			
	4	UMBW-4B1-4	UMBW-4C1-4	UMBW-4D1-4			
	5	UMBW-4B1-5 <sup>1</sup>	UMBW-4C1-5 <sup>1</sup>	UMBW-4D1-5 <sup>1</sup>			
	6	UMBW-4B1-6	UMBW-4C1-6	UMBW-4D1-6			
	7	UMBW-4B1-7 <sup>1</sup>	UMBW-4C1-7 <sup>1</sup>	UMBW-4D1-7 <sup>1</sup>			
	8	UMBW-4B1-8 <sup>1</sup>	UMBW-4C1-8 <sup>1</sup>	UMBW-4D1-8 <sup>1</sup>			
	10	UMBW-4B1-10	UMBW-4C1-10	UMBW-4D1-10			
	12	UMBW-4B1-12 <sup>1</sup>	UMBW-4C1-12 <sup>1</sup>	UMBW-4D1-12 <sup>1</sup>			
	13	UMBW-4B1-13 <sup>1</sup>	UMBW-4C1-13 <sup>1</sup>	UMBW-4D1-13 <sup>1</sup>			
	15	UMBW-4B1-15	UMBW-4C1-15	UMBW-4D1-15			
	16	UMBW-4B1-16	UMBW-4C1-16	UMBW-4D1-16			
	20	UMBW-4B1-20	UMBW-4C1-20	UMBW-4D1-20			
	25	UMBW-4B1-25	UMBW-4C1-25	UMBW-4D1-25			
	30	UMBW-4B1-30 <sup>1</sup>	UMBW-4C1-30 <sup>1</sup>	UMBW-4D1-30 <sup>1</sup>	120 VAC /60 VDC	<b>\$53.00</b>	Z12
	32	UMBW-4B1-32	UMBW-4C1-32	UMBW-4D1-32			
	35	UMBW-4B1-35 <sup>1</sup>	UMBW-4C1-35 <sup>1</sup>	UMBW-4D1-35 <sup>1</sup>			
	40	UMBW-4B1-40 <sup>1</sup>	UMBW-4C1-40 <sup>1</sup>	UMBW-4D1-40 <sup>1</sup>			
50	UMBW-4B1-50 <sup>1</sup>	UMBW-4C1-50 <sup>1</sup>	UMBW-4D1-50 <sup>1</sup>				
60	UMBW-4B1-60 <sup>1</sup>	UMBW-4C1-60 <sup>1</sup>	UMBW-4D1-60 <sup>1</sup>				
63	UMBW-4B1-63 <sup>1</sup>	UMBW-4C1-63 <sup>1</sup>	UMBW-4D1-63 <sup>1</sup>				
<b>2 POLE</b> 	1	UMBW-4B2-1	UMBW-4C2-1	UMBW-4D2-1	277/480 VAC 125 VDC	<b>\$107.00</b>	Z12
	1.5	UMBW-4B2-1.5 <sup>1</sup>	UMBW-4C2-1.5 <sup>1</sup>	UMBW-4D2-1.5 <sup>1</sup>			
	2	UMBW-4B2-2	UMBW-4C2-2	UMBW-4D2-2			
	3	UMBW-4B2-3 <sup>1</sup>	UMBW-4C2-3 <sup>1</sup>	UMBW-4D2-3 <sup>1</sup>			
	4	UMBW-4B2-4	UMBW-4C2-4	UMBW-4D2-4			
	5	UMBW-4B2-5	UMBW-4C2-5	UMBW-4D2-5			
	6	UMBW-4B2-6	UMBW-4C2-6	UMBW-4D2-6			
	7	UMBW-4B2-7 <sup>1</sup>	UMBW-4C2-7 <sup>1</sup>	UMBW-4D2-7 <sup>1</sup>			
	8	UMBW-4B2-8 <sup>1</sup>	UMBW-4C2-8 <sup>1</sup>	UMBW-4D2-8 <sup>1</sup>			
	10	UMBW-4B2-10	UMBW-4C2-10	UMBW-4D2-10			
	12	UMBW-4B2-12	UMBW-4C2-12	UMBW-4D2-12			
	13	UMBW-4B2-13 <sup>1</sup>	UMBW-4C2-13 <sup>1</sup>	UMBW-4D2-13 <sup>1</sup>			
	15	UMBW-4B2-15 <sup>1</sup>	UMBW-4C2-15 <sup>1</sup>	UMBW-4D2-15 <sup>1</sup>			
	16	UMBW-4B2-16	UMBW-4C2-16	UMBW-4D2-16			
	20	UMBW-4B2-20	UMBW-4C2-20	UMBW-4D2-20			
	25	UMBW-4B2-25	UMBW-4C2-25	UMBW-4D2-25			
	30	UMBW-4B2-30 <sup>1</sup>	UMBW-4C2-30 <sup>1</sup>	UMBW-4D2-30 <sup>1</sup>	277/480 VAC 125 VDC	<b>\$107.00</b>	Z12
	32	UMBW-4B2-32	UMBW-4C2-32	UMBW-4D2-32			
	35	UMBW-4B2-35 <sup>1</sup>	UMBW-4C2-35 <sup>1</sup>	UMBW-4D2-35 <sup>1</sup>			
	40	UMBW-4B2-40 <sup>1</sup>	UMBW-4C2-40 <sup>1</sup>	UMBW-4D2-40 <sup>1</sup>			
50	UMBW-4B2-50 <sup>1</sup>	UMBW-4C2-50 <sup>1</sup>	UMBW-4D2-50 <sup>1</sup>				
60	UMBW-4B2-60 <sup>1</sup>	UMBW-4C2-60 <sup>1</sup>	UMBW-4D2-60 <sup>1</sup>				
63	UMBW-4B2-63 <sup>1</sup>	UMBW-4C2-63 <sup>1</sup>	UMBW-4D2-63 <sup>1</sup>				

1) Non-stocked. Contact WEG for availability.

UMBW

UL489

# Poles	Ampacity	Catalog Number			Max Voltage	List Price	Multiplier			
		B CURVE	C CURVE	D CURVE						
<p><b>3 POLE</b></p> 	1	UMBW-4B3-1	UMBW-4C3-1	UMBW-4D3-1	277/480 VAC 125 VDC	<b>\$158.00</b>	Z12			
	1.5	UMBW-4B3-1.5 <sup>1</sup>	UMBW-4C3-1.5 <sup>1</sup>	UMBW-4D3-1.5 <sup>1</sup>						
	2	UMBW-4B3-2	UMBW-4C3-2	UMBW-4D3-2						
	3	UMBW-4B3-3 <sup>1</sup>	UMBW-4C3-3 <sup>1</sup>	UMBW-4D3-3 <sup>1</sup>						
	4	UMBW-4B3-4	UMBW-4C3-4	UMBW-4D3-4						
	5	UMBW-4B3-5	UMBW-4C3-5	UMBW-4D3-5						
	6	UMBW-4B3-6	UMBW-4C3-6	UMBW-4D3-6						
	7	UMBW-4B3-7 <sup>1</sup>	UMBW-4C3-7 <sup>1</sup>	UMBW-4D3-7 <sup>1</sup>						
	8	UMBW-4B3-8 <sup>1</sup>	UMBW-4C3-8	UMBW-4D3-8						
	10	UMBW-4B3-10	UMBW-4C3-10	UMBW-4D3-10						
	12	UMBW-4B3-12 <sup>1</sup>	UMBW-4C3-12 <sup>1</sup>	UMBW-4D3-12 <sup>1</sup>						
	13	UMBW-4B3-13 <sup>1</sup>	UMBW-4C3-13 <sup>1</sup>	UMBW-4D3-13 <sup>1</sup>						
	15	UMBW-4B3-15	UMBW-4C3-15	UMBW-4D3-15						
	16	UMBW-4B3-16	UMBW-4C3-16	UMBW-4D3-16						
	20	UMBW-4B3-20	UMBW-4C3-20	UMBW-4D3-20						
	25	UMBW-4B3-25	UMBW-4C3-25	UMBW-4D3-25						
	30	UMBW-4B3-30 <sup>1</sup>	UMBW-4C3-30 <sup>1</sup>	UMBW-4D3-30 <sup>1</sup>				240 VAC / 125 VDC	<b>\$158.00</b>	Z12
	32	UMBW-4B3-32	UMBW-4C3-32	UMBW-4D3-32						
35	UMBW-4B3-35 <sup>1</sup>	UMBW-4C3-35 <sup>1</sup>	UMBW-4D3-35 <sup>1</sup>							
40	UMBW-4B3-40 <sup>1</sup>	UMBW-4C3-40 <sup>1</sup>	UMBW-4D3-40 <sup>1</sup>							
50	UMBW-4B3-50 <sup>1</sup>	UMBW-4C3-50 <sup>1</sup>	UMBW-4D3-50 <sup>1</sup>							
60	UMBW-4B3-60 <sup>1</sup>	UMBW-4C3-60 <sup>1</sup>	UMBW-4D3-60 <sup>1</sup>							
63	UMBW-4B3-63 <sup>1</sup>	UMBW-4C3-63 <sup>1</sup>	UMBW-4D3-63 <sup>1</sup>							

1) Non-stocked. Contact WEG for availability.

## Breaker Technical Data

### Electrical Ratings

Approval	Poles	Voltage	Ampacity	Interrupting
UL1077 E468808	1 Pole	240VAC	1A - 63A	7.5kA
	1 Pole	277VAC	1A - 63A	5kA
	2,3 Pole	240VAC	1A - 63A	5kA
	2, 3 Pole	277/480Y VAC	1A - 63A	5kA
	1 Pole	60VDC - pending	1A - 63A	7.5kA
	2 Pole	125VDC - pending	1A - 63A	7.5kA
UL489 E468810	1 Pole	120VAC	1A - 63A	10kA
	2, 3 Pole	240VAC	1A - 63A	10kA
	1 Pole	277VAC	1A - 20A	10kA
	2, 3 Pole	277/480Y VAC	1A - 20A	10kA
	1 Pole	60VDC	1A - 63A	10kA
	2 Pole	125VDC	1A - 63A	10kA
IEC 60947-2	1 Pole	230VAC	1A - 63A	10kA
	2, 3 Pole	400VAC	1A - 63A	10kA

### Mechanical Ratings

Tripping Curves	B,C,D
Number of Poles	1,2,3
Mounting Position	Vertical, Horizontal
Torque	2 Nm, 1.48 ft lbs Maximum
Cable Cross Section	35mm sq, 2 Awg Maximum
Ambient Temperature	-35 deg C to +70 deg C
Mass	UL1077 - 116 grams per pole UL489 - 131 grams per pole
Protection Class	IP20
Mechanical Operations	10,000
Vibration (sinusoidal)	+ - .38mm (10-57HZ), 5g
Test to IEC 60060-2-6	(57-500HZ)
Test to Fc	10 frequency cycles per axis
Shock Test to IEC60068-2-27, Test Ea	30g (11ms)
Corrosion Test to IEC60068-2-11 Test Ka	96hrs in 5% salt mist
Humidity Test to IEC60068-2-78 Test Cab	48hrs at 95% RH, Temp +40 deg C
Terminals	Screw with Bus Bar Connections

### Accessories

Auxiliary Contact	1NO/1NC
Shunt Trip	120,240,277AC...12,24,48,125DC
Bell Alarm	1NO/1NC
Bus Bar	1,2,3 Phase...1,2,3 Phase with Auxiliary

## UMBW

### Miniature Circuit Breakers

### Accessories & Technical Data

**Auxiliary Contacts- Signaling contacts that open and close with the breaker. Provide remote status indicatin ON and OFF only.**

For Use With	Catalog Number	Operating Voltage	Operating Amperage	Contacts	Mounting/Dims (mm)	Mechanical Operations	Torque	Mass	QTY	List Price	Multiplier
UMBW-1 UMBW-4	UMBW-AUX	12-240VAC	6A	1NO/1NC	Field Mountable..Left Side/ 9mm	20,000	1 Nm .74 Ft. lbs.	29g	1	\$55	Z12
		277VAC	3A								
		12-24VDC	6A								
		48VDC	3A								
		110-220VDC	1.5A								

**Bell Alarm- Provides provisions for visual and alarm indication when the breaker in the Tripped status, due to Short Circuit, Overload or Undervoltage. Breaker must be re-set to open contacts.**

For Use With	Catalog Number	Operating Voltage	Operating Amperage	Contacts	Mounting/Dims (mm)	Mechanical Operations	Torque	Mass	QTY	List Price	Multiplier
UMBW-1 UMBW-4	UMBW-BAC	12-240VAC	6A	1NO/1NC	Field Mountable..Left Side/ 9mm	10,000	1 Nm .74 Ft. lbs.	29g	1	\$68	Z12
		277VAC	3A								
		12-24VDC	6A								
		48VDC	3A								
		110-220VDC	1.5A								

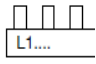
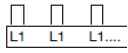
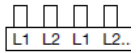
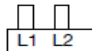
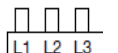
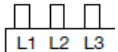
**Shunt Trip- Provides ability to trip breaker from remote location when power is applied.**

For Use With	Catalog Number	Voltage/Min Trip Voltage	Amperage/ Power Consumption	Contacts	Mounting/Dims (mm)	Mechanical Operations	Torque	Mass	QTY	List Price	Multiplier
UMBW-1 UMBW-4	UMBW-ST12DC	12 VDC/ 8VDC	6A/ 200W	1NO/1NC	Field Mountable..Left Side/18mm	20,000	1Nm, .74ft lbs	60g	1	\$95	Z12
	UMBW-ST24DC	24 VDC/ 16VDC	6A/ 200W							\$95	
	UMBW-ST48DC	48 VDC/ 24VDC	2A/ 200W							\$95	
	UMBW-ST125DC	125 VDC/ 80VDC	1.5A/ 200W							\$95	
	UMBW-ST120AC	120 VAC/ 80VAC	6A/ 200W							\$95	
	UMBW-ST240AC	240 VAC/ 160VAC	6A/ 200W							\$95	
	UMBW-ST277AC	277 VAC/ 160VAC	3A/ 200W							\$95	



### Miniature Circuit Breakers

#### Bus Bar Accessories

For Use With	Catalog Number	AMP Rating End/Center	Number of Poles	Max Voltage	Length (mm)	QTY	List Price	End Cap Catalog Number (Sold as Separate Item)	QTY	List Price	Multiplier
<b>1 Pole</b>											
UMBW-1	<b>UMBW-BB-1-1</b> 	80A/160A	57	600 AC /1000 DC	1009	1	\$125	<b>UMBW-BB-1-1P-END CAP</b>	10 (Sets of 2pcs)	\$30.00	Z12
UMBW-4	<b>UMBW-BB-4-1</b>	80A/160A	57	1000 AC/DC	1031	1	\$500	<b>UMBW-BB-4-END CAP</b>	10	\$35.00	
<b>1 Pole with Auxiliary</b>											
UMBW-1	<b>UMBW-BB-1-1A</b> 	80A/160A	37	600 AC /1000 DC	985	1	\$135	<b>UMBW-BB-1-1P-END CAP</b>	10 (Sets of 2pcs)	\$30.00	Z12
UMBW-4	<b>UMBW-BB-4-1A</b>	80A/160A	37	1000 AC/DC	972	1	\$570	<b>UMBW-BB-4-END CAP</b>	10	\$35.00	
<b>2 POLE</b>											
UMBW-1	<b>UMBW-BB-1-2</b> 	80A/160A	56	600 AC/DC	991	1	\$285	<b>UMBW-BB-1-2/3P-E CAP</b>	10 (Sets of 2pcs)	\$30.00	Z12
UMBW-4	<b>UMBW-BB-4-2</b>	80A/160A	56	600 AC/DC	979	1	\$575	<b>UMBW-BB-4-END CAP</b>	10	\$35.00	
<b>2 Pole with Auxiliary</b>											
UMBW-1	<b>UMBW-BB-1-2A</b> 	80A/160A	46	600 AC/DC	1009	1	\$295.00	<b>UMBW-BB-1-2/3P-E CAP</b>	10 (Sets of 2pcs)	\$30.00	Z12
UMBW-4	<b>UMBW-BB-4-2A</b>	80A/160A	46	600 AC/DC	981	1	\$645.00	<b>UMBW-BB-4-END CAP</b>	10	\$35.00	
<b>3 Pole</b>											
UMBW-1	<b>UMBW-BB-1-3</b> 	80A/160A	57	600 AC/DC	1009	1	\$340.00	<b>UMBW-BB-1-2/3P-E CAP</b>	10 (Sets of 2pcs)	\$30.00	Z12
UMBW-4	<b>UMBW-BB-4-3</b>	80A/160A	57	600 AC/DC	997	1	\$650.00	<b>UMBW-BB-4-END CAP</b>	10	\$35.00	
<b>3 Pole with Auxiliary</b>											
UMBW-1	<b>UMBW-BB-1-3A</b> 	80A/160A	48	600 AC/DC	982	1	\$345.00	<b>UMBW-BB-1-2/3P-E CAP</b>	10 (Sets of 2pcs)	\$30.00	Z12
UMBW-4	<b>UMBW-BB-4-3A</b>	80A/160A		600 AC/DC	936	1	\$720.00	<b>UMBW-BB-4-END CAP</b>	10	\$35.00	

Note: Bus Bars May Be Center Fed to to Increase Ampacity to Double Rated Value

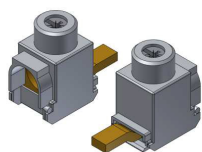
## UMBW

### Miniature Circuit Breakers

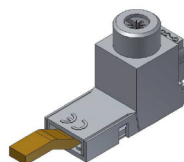
#### Bus Bar Accessories

For Use With	Catalog Number	AMP Rating	Number of Poles	Max Voltage	Conductor Range Min/Max	Tightening Torque	QTY	List Price	Multiplier
UMBW-1	<a href="#">UMBW-BB-1-1P-END CAP</a>	N/A	1	N/A	N/A	N/A	10	\$30.00	Z12
UMBW-1	<a href="#">UMBW-BB-1-2/3-P-CAP</a>	N/A	2 or 3	N/A	N/A	N/A	10 (Sets of 2pcs)	\$35.00	Z12
UMBW-1	<a href="#">UMBW-BB-1-1P-TERM</a>	115A	1	1000 AC/DC	10AWG/1AWG	50 lb.in	10	\$320.00	Z12
UMBW-1	<a href="#">UMBW-BB-1-2/3P-TERM</a>	115A	2 or 3	1000 AC/DC	10AWG/1AWG	50 lb.in	10	\$330.00	Z12
UMBW-1	<a href="#">UMBW-BB-1-BUS CAP-Y</a>	N/A	5	N/A	N/A	N/A	10 (Sets of 5pcs)	\$115.00	Z12

For Use With	Catalog Number	AMP Rating	Number of Poles	Max Voltage	Conductor Range Min/Max	Tightening Torque	QTY	List Price	Multiplier
UMBW-4	<a href="#">UMBW-BB-4-END CAP</a>	N/A		N/A	N/A	N/A	10	\$40.00	Z12
UMBW-4	<a href="#">UMBW-BB-4-1P-TERM</a>	115A	1	1000 AC/DC	14AWG/2AWG	50 lb.in	10	\$350.00	Z12
UMBW-4	<a href="#">UMBW-BB-4-BUS CAP-Y</a>	N/A	3	N/A	N/A	N/A	10 (Sets of 3pcs)	\$45.00	Z12



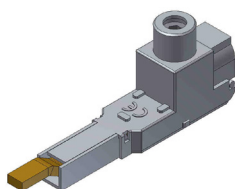
**UMBW-BB-1-1P-TERM**



**UMBW-BB-1-2/3P-TERM**



**UMBW-BB-1-BUS CAP-Y**



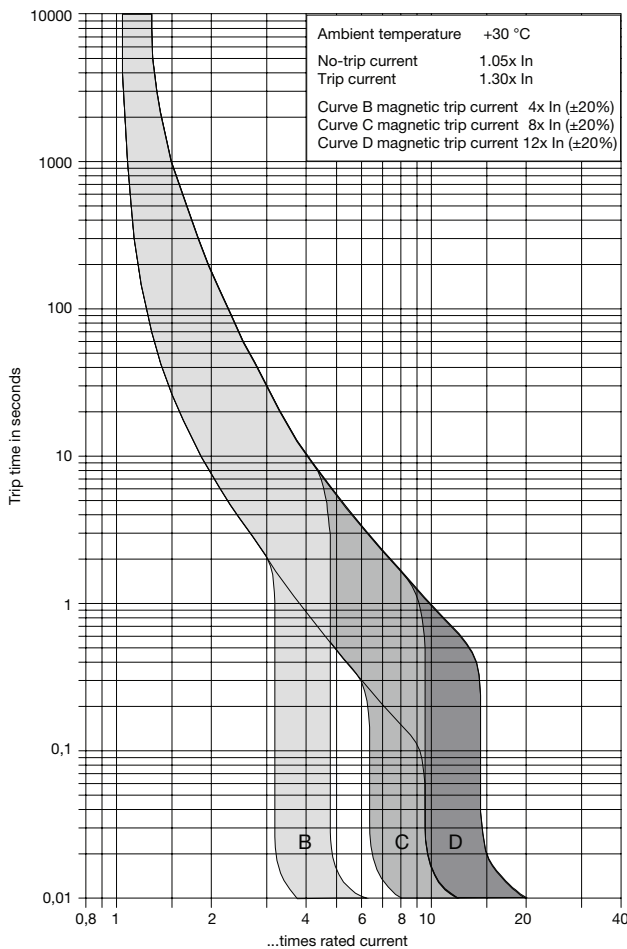
**UMBW-BB-4-1P-TERM**



**UMBW-BB-4-BUS CAP-Y**

## Operating Ampacity Based on Ambient Temperature (Degree C)

Amps	-35	-30	-25	-20	-15	-10	-5	0	+5	+10	+15	+20	+25	+30	+35	+40	+45	+50	+55	+60	+65	+70
1	1.3	1.3	1.2	1.2	1.2	1.2	1.2	1.1	1.1	1.1	1.1	1.1	1.0	1.0	1.0	0.9	0.9	0.9	0.9	0.8	0.8	0.8
2	2.5	2.5	2.5	2.4	2.4	2.3	2.3	2.3	2.2	2.2	2.1	2.1	2.0	2.0	1.9	1.9	1.8	1.8	1.7	1.7	1.6	1.5
4	5.1	5.0	4.9	4.8	4.8	4.7	4.6	4.5	4.4	4.3	4.2	4.2	4.1	4.0	3.9	3.8	3.6	3.6	3.4	3.3	3.2	3.1
6	7.7	7.6	7.5	7.3	7.2	7.1	7.0	6.8	6.7	6.6	6.4	6.3	6.1	6.0	5.8	5.7	5.5	5.4	5.2	5.0	4.8	4.6
10	13.9	13.6	13.4	13.1	12.8	12.5	12.2	11.9	11.6	11.3	11.0	10.7	10.3	10.0	9.6	9.2	8.9	8.5	8.0	7.6	7.1	6.6
16	20.8	20.4	20.1	19.8	19.4	19.1	18.7	18.3	18.0	17.6	17.2	16.8	16.4	16.0	15.6	15.1	14.7	14.2	13.7	13.2	12.7	12.8
20	25.7	25.3	24.9	24.5	24.1	23.6	23.2	22.8	22.3	21.9	21.4	21.0	20.5	20.0	19.5	19.0	18.4	17.9	17.3	16.7	16.1	15.5
25	32.2	31.7	31.2	30.7	30.2	29.7	29.1	28.6	28.0	27.4	26.8	26.2	25.6	25.0	24.3	23.7	23.0	22.3	21.6	20.8	20.0	19.2
32	41.0	40.5	39.8	39.2	38.5	37.8	37.2	36.5	35.8	35.0	34.3	33.5	32.8	32.0	31.2	30.3	29.5	28.7	27.7	26.8	25.8	24.8
40	51.6	50.9	50.0	40.2	48.4	47.5	46.6	45.7	44.8	43.9	43.0	42.0	41.0	40.0	38.9	37.9	36.8	35.6	34.4	33.2	32.0	30.6
50	64.9	64.0	62.9	61.9	60.8	59.7	58.5	57.4	56.2	55.1	53.8	52.6	51.3	50.0	47.8	46.2	44.8	43.3	41.8	40.2	38.6	35.8
63	83.5	82.1	80.6	79.2	77.7	76.2	74.7	73.1	71.5	69.9	68.2	66.5	64.8	63.0	60.1	58.2	56.2	54.2	52.0	49.8	47.5	43.1



Magnetic tripping currents are increased by 30 % on DC supplies.

### B CURVE- Tripping Characteristics:

Calibrated for resistive or non/low inductive loads.  
 Applications: Lighting, Control Circuits

### C CURVE- Tripping Characteristics:

Calibrated for general purpose inductive loads.  
 Applications: Fluorecent lighting, midrange inductive motors

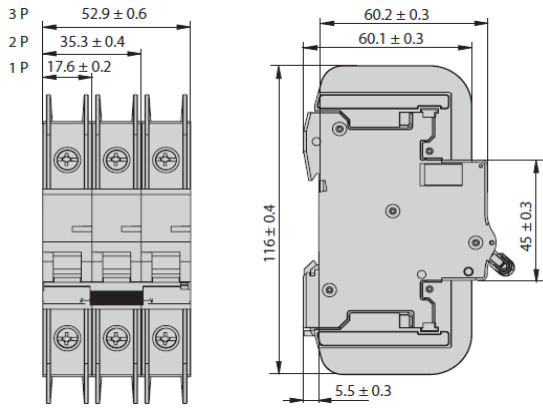
### D CURVE- Tripping Characteristics:

Calibrated for inductive loads with high inrush currents  
 Applications: Motors, Transformers

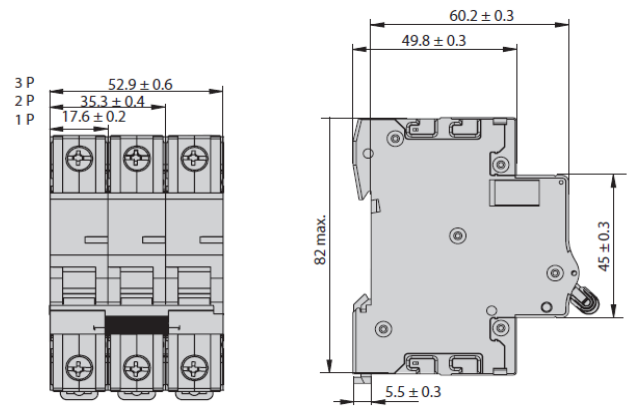
## UMBW

### Dimensions

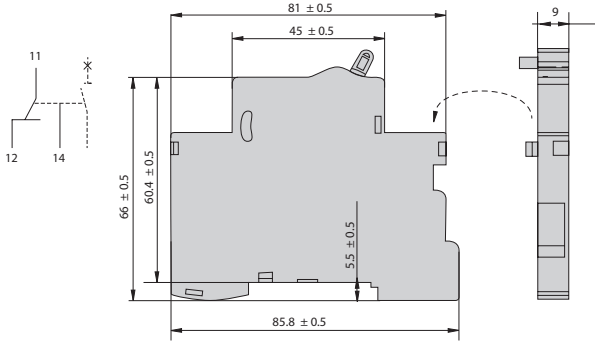
**UMBW - 4 (UL489)**



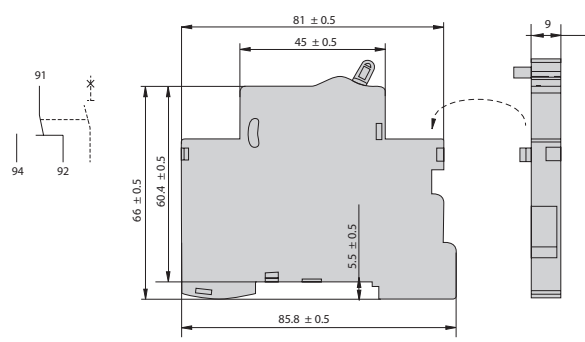
**UMBW - 1 (UL1077)**



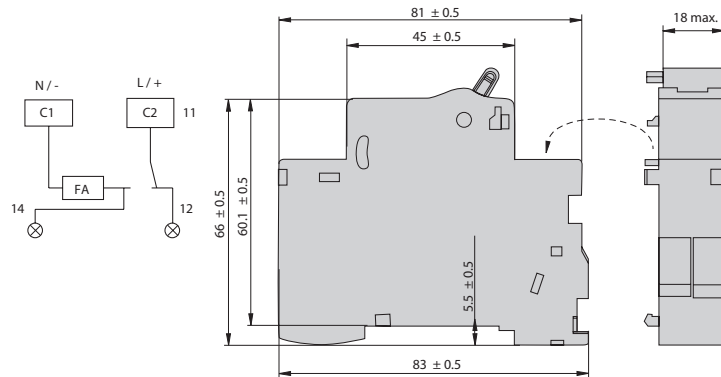
**UMBW - AUX**



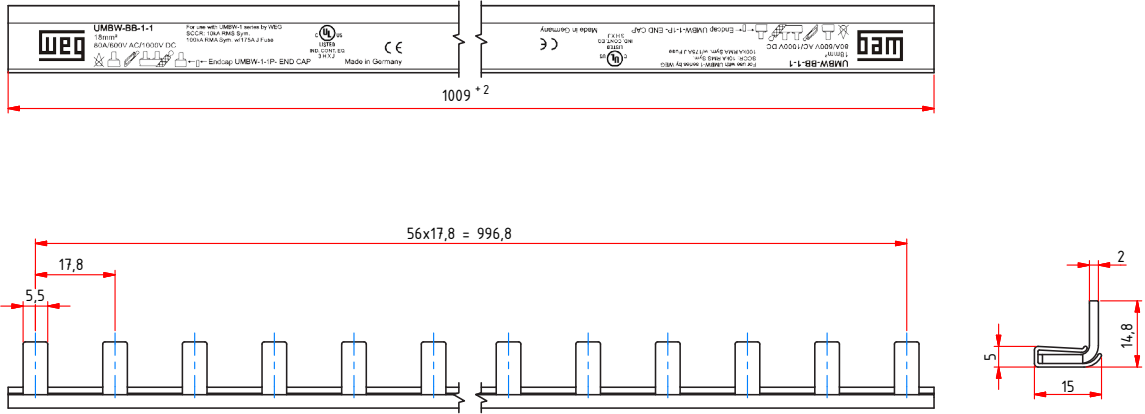
**UMBW - BAC**



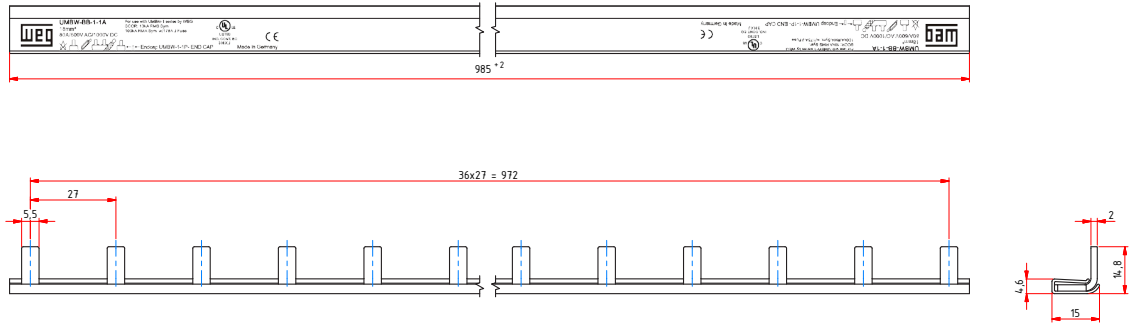
**UMBW - AUX**



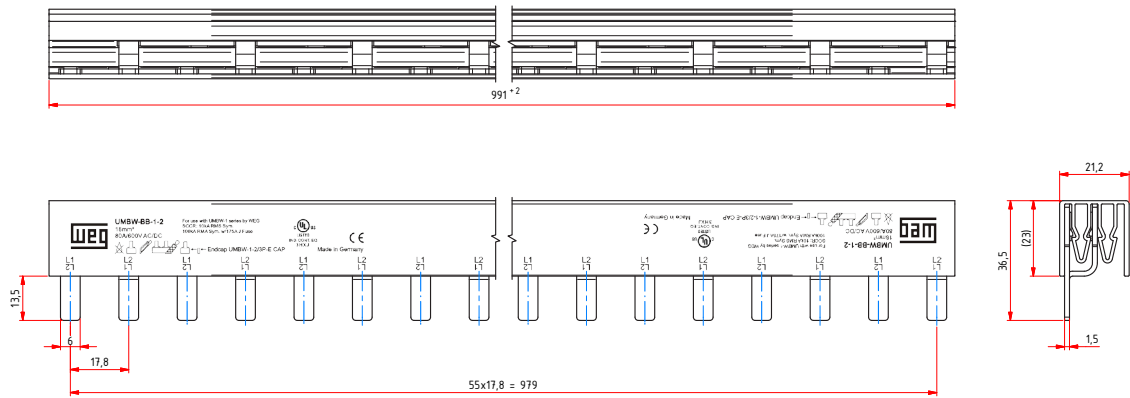
### UMBW-BB-1-1



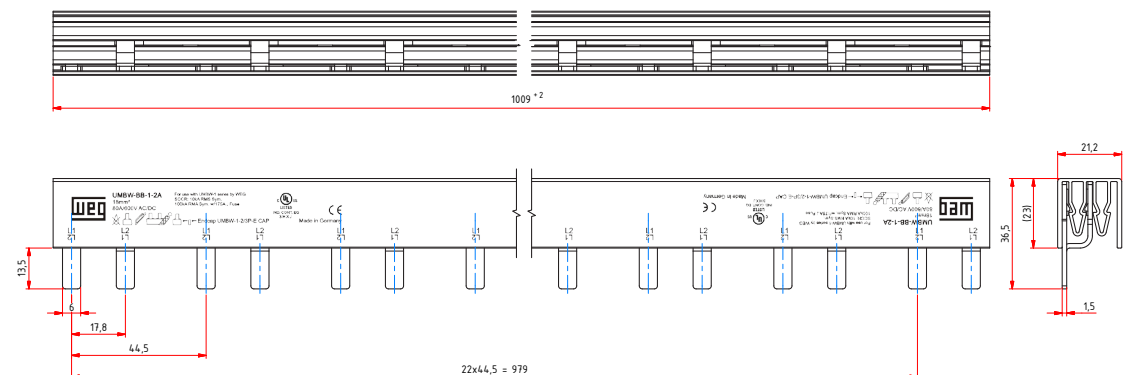
### UMBW-BB-1-1A



### UMBW-BB-1-2

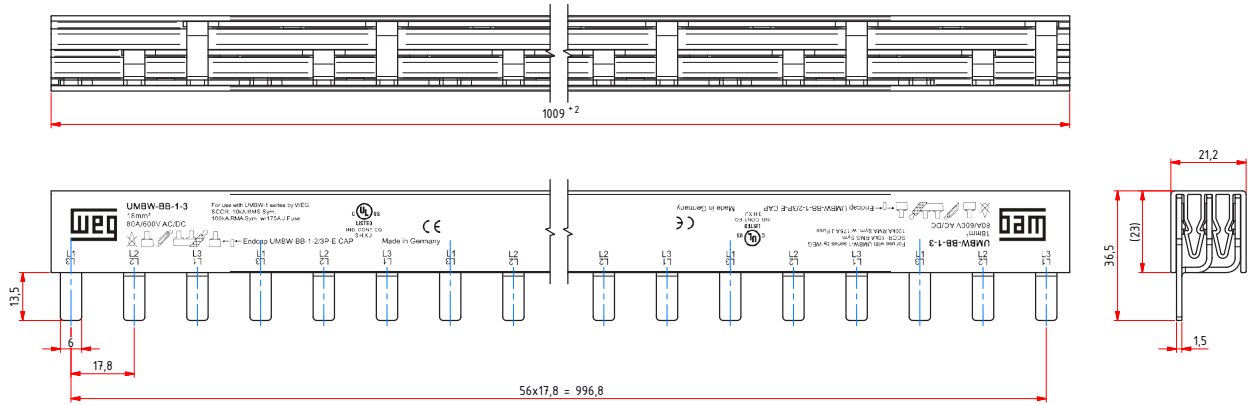


### UMBW-BB-1-2A

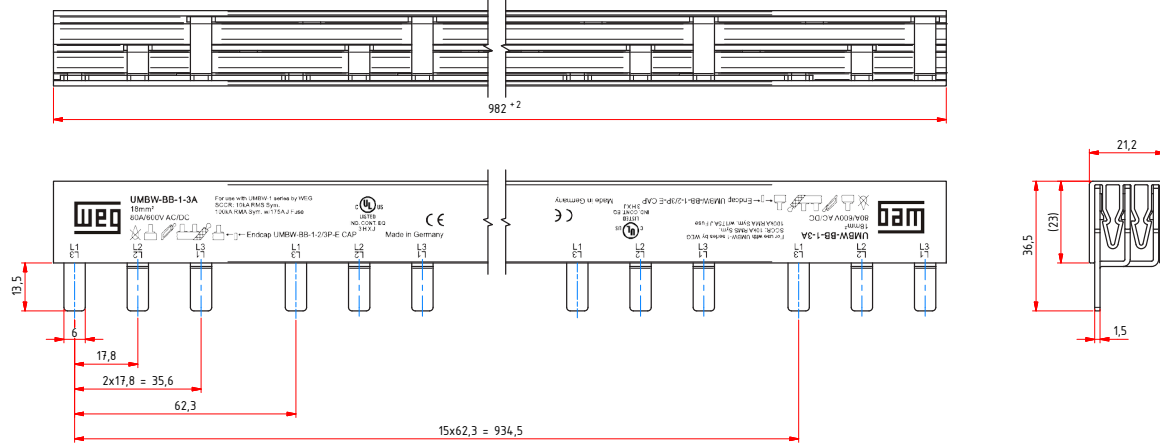


## UMBW

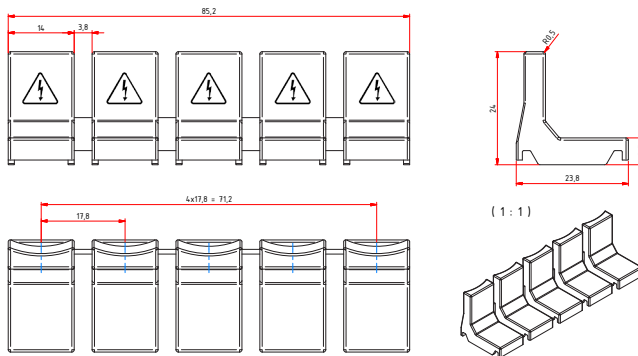
### UMBW-BB-1-3



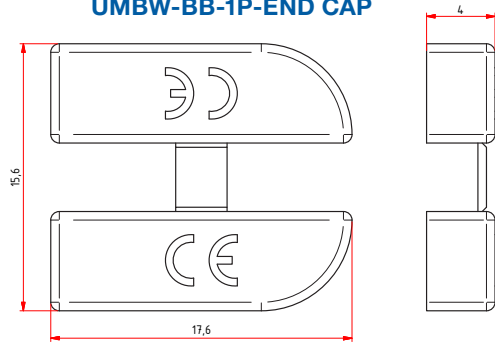
### UMBW-BB-1-3A



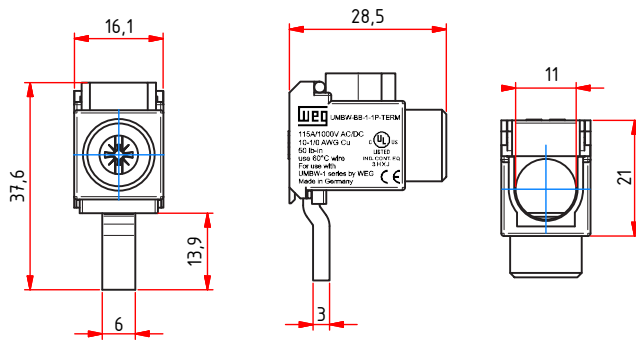
### UMBW-BB-1-BUS CAP-Y



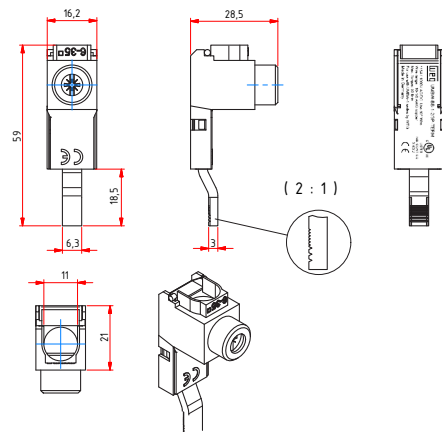
### UMBW-BB-1P-END CAP



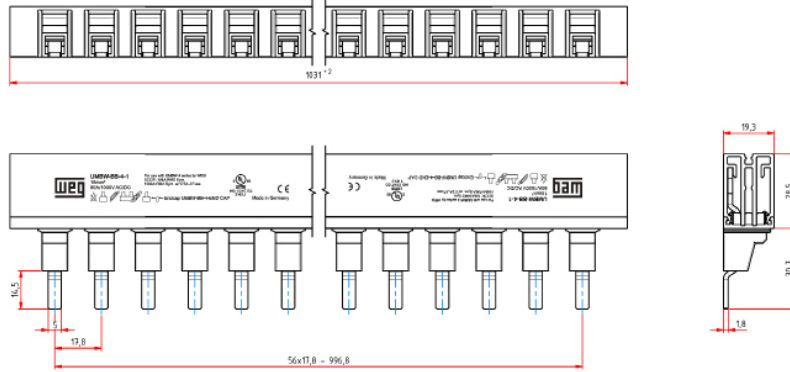
### UMBW-BB-1-1P-TERM



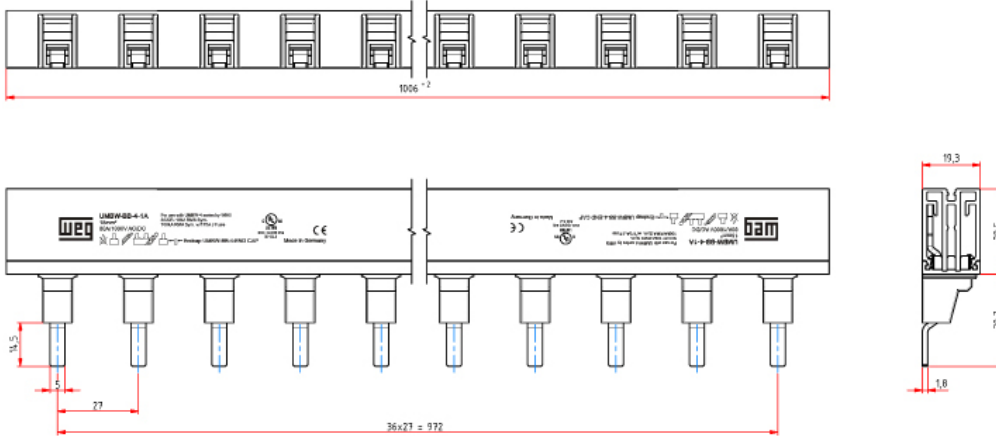
### UMBW-BB-1-2/3P-TERM



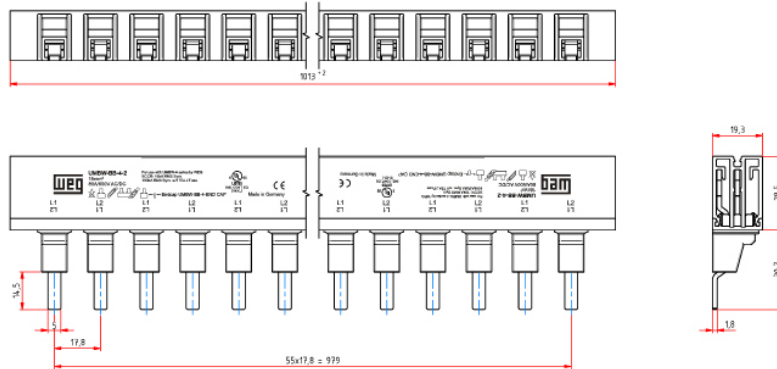
### UMBW-BB-4-1



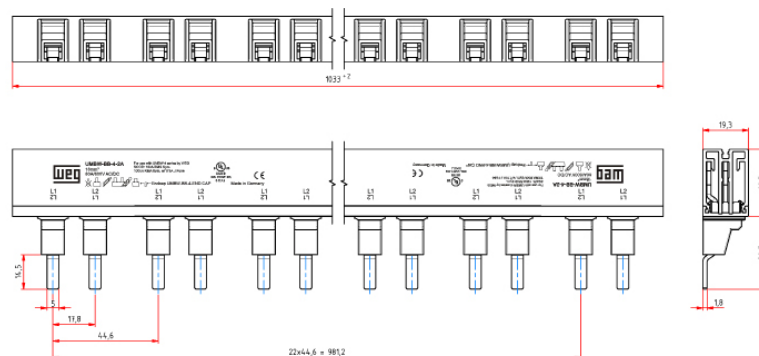
### UMBW-BB-4-1A



### UMBW-BB-4-2

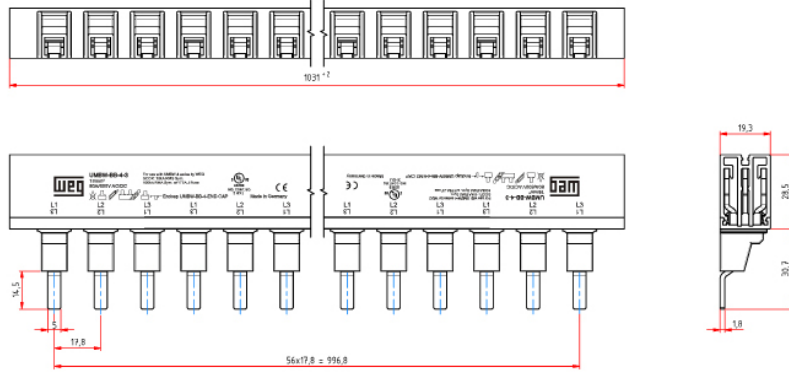


### UMBW-BB-4-2A

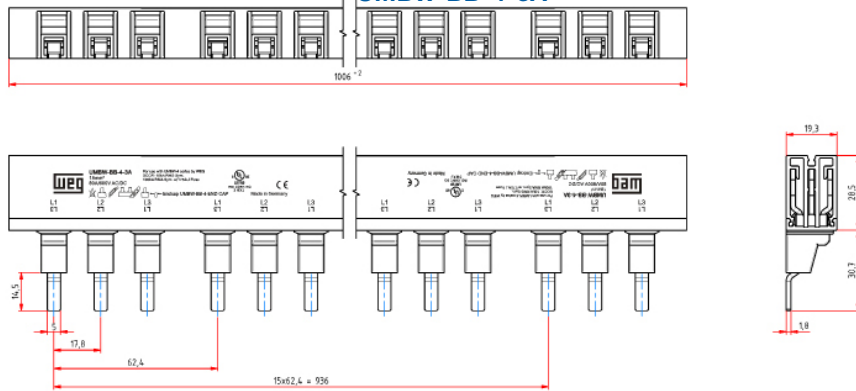


## UMBW

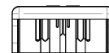
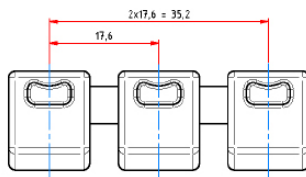
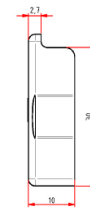
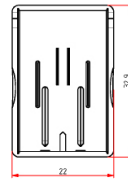
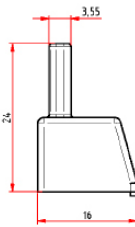
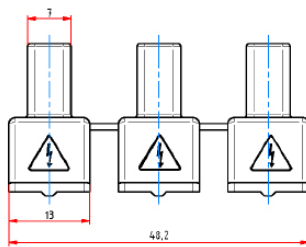
### UMBW-BB-4-3



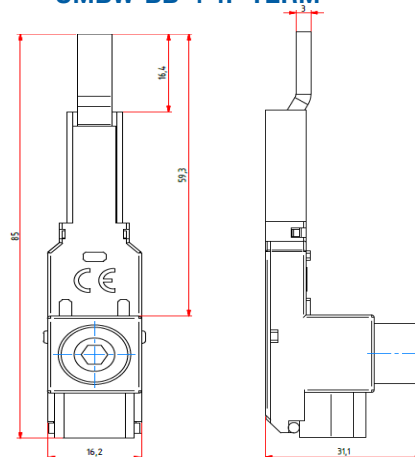
### UMBW-BB-4-3A



### UMBW-BB-4-BUS CAP-Y



### UMBW-BB-4-1P-TERM







WEG Electric Corp. offers the following products, and more! With a full range of IEC/ NEMA Global Certifications and a full line of products, WEG can supply the right solution for your needs anywhere in the world. To learn more about WEG's products and solutions or to locate a Distributor near you, please call 1-800-ASK-4WEG or visit www.weg.net/us.

Low Voltage Motors,  
Single and 3-Phase, 1/8 – 700HP  
General Purpose Motors  
Explosion Proof Motors  
Crusher Duty Motors  
IEC Tru-Metric Motors  
Pump Motors including JP/JM  
P-Base Pump Motors  
Oil Well Pumping Motors  
Pool & Spa Motors  
Brake Motors  
Compressor Duty Motors  
Farm Duty Motors  
Poultry Fan Motors  
Auger Drive Motors  
IEEE 841 Motors  
Stainless Steel Wash Down Motors  
Saw Arbor Motors  
Cooling Tower Motors  
Commercial HVAC Motors  
Pad Mounted Motors  
Vector Duty Motors

**Large Electric Motors**  
Low Voltage 3-phase motors up to 2,500HP  
Induction Motors up to 70,000HP and 13,200V  
Wound Rotor Systems (including starters) up to 70,000HP and 13,200V  
Synchronous Motors up to 200,000HP and 13,200V  
Explosion proof motors (Ex-d) up to 1,500kW and 11kV  
Ex-n, Ex-e, Ex-p motors

**Variable Frequency Drives**  
Low Voltage 1/4 to 2500HP, 230V – 480V  
Medium Voltage 500-10,000HP  
Multi-pump systems  
NEMA 4X  
Dynamic braking resistors  
Line and load reactors  
Plug and play technology  
Network communications: Profibus-DP, DeviceNet, Modbus-RTU  
PLC functions integrated  
Complete line of options and accessories

**Soft Starters**  
3-1500HP  
Oriented start-up  
Built-in bypass contactor  
Universal source voltage (230-575V, 50/60Hz)  
Network communications: Profibus-DP, DeviceNet, Modbus-RTU  
Complete Line of options and accessories  
MV Soft-starter 3.3kV, 4.16kV: up to 3500HP, Withdrawable Power Stacks, & 8x PT100 Temperature monitoring

**Controls**  
Mini – Contactors  
IEC Contactors  
Miniature Circuit Breakers  
Thermal Overload Relays  
Manual Motor Protectors  
Molded Case Circuit Breakers  
Smart Relays  
Enclosed Starters: combination & non-combination,  
Pushbuttons & Pilot Lights  
Timing & Motor Protection Relays  
Terminal Blocks

**Custom Panels**  
Custom configured to your specification.  
NEMA 1, 12, 3R, 4 and 4X cabinets  
Quick delivery of preconfigured drives and soft starters  
UL 508 certified  
Low Voltage (230-460)  
Made in the U.S.A.  
Generators  
Brushless Synchronous Generators for diesel gen-sets up to 4,200kVA  
Hydro-generators up to 25,000kVA  
Turbo-generators up to 175,000kVA

**Power Transformers**  
Built and engineered in North America  
Voltages < 345kV  
Ratings 5-250MVA  
Station class, oil filled, round core, copper windings  
Special configurations and designs available! Ask your WEG Sales Representative for details.  
Designed, built, and engineered to ANSI standards.  
Custom Solution Package Sales  
WEG can package any of its products for ease of sale! Enjoy a single point of contact for the entire package of products and assistance from quote through after-sales support. Ask your WEG Sales representative for details.



WEG ELECTRIC CORP.  
6655 Sugarloaf Parkway  
Duluth, GA 30097  
Phone: 1-800-ASK-4WEG  
Fax: 678-249-1155  
[info-us@weg.net](mailto:info-us@weg.net)  
[www.weg.net/us](http://www.weg.net/us)

Please contact your authorized distributor: