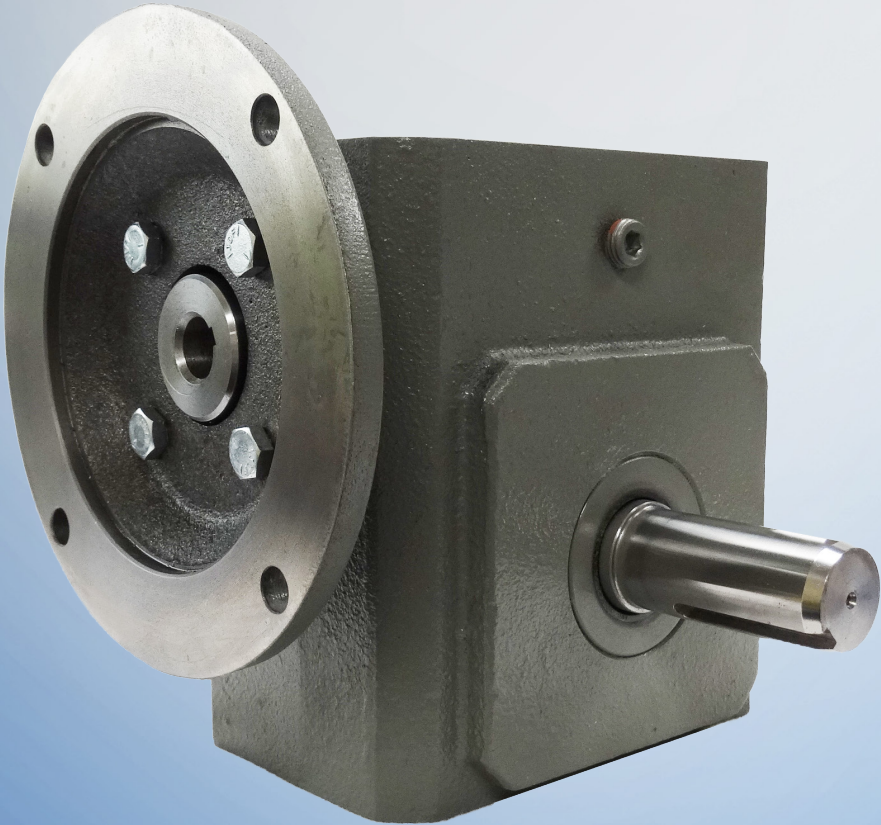


**Motors**

- Automation
- Gearing Products
- Energy
- Transmission and Distribution
- Coatings

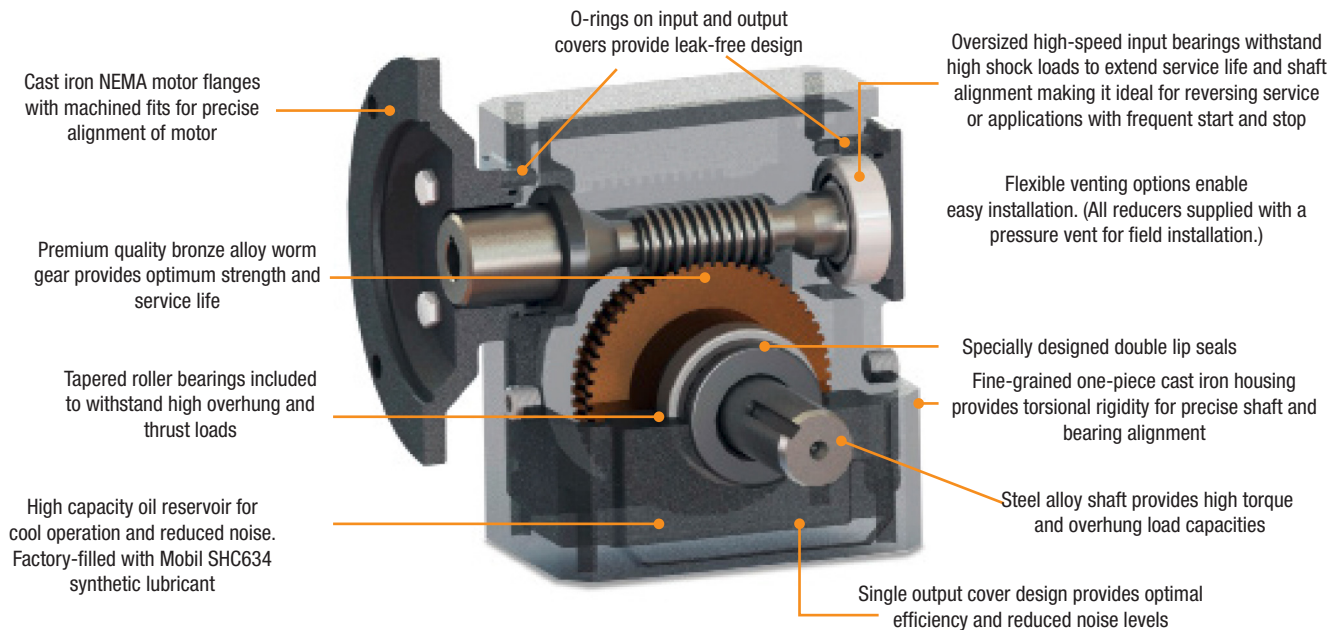
# TG-90™ Speed Reducers



Driving efficiency and sustainability



WEG's Line of right angle gear reducers has been a leading source to the industry for over 60 years. Designed for reliability and long life, the TG-90 series comes in a variety of sizes and styles. Our robust design is precision engineered and manufactured to fit a variety of applications. Ideal for use on conveyors, material handling and packaging machinery, lift gates, hoists, and many other applications, the TG-90 series proves to be a versatile choice for all your gearing needs.



## Features:

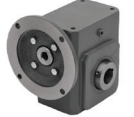
- Cast iron housing construction
- Forged manganese bronze worm gear for added strength
- Oversized high-speed input bearings to withstand high shock loads
- Oversized output tapered roller bearings to withstand high overhung and thrust loads
- Specially designed double lip seals maximize life and minimize potential for leaks
- High capacity oil reservoir filled with synthetic oil for cool operation, long life and maximize torque capacity
- Available in 56C, 143TC and 180TC quill or solid shaft input mounting
- Eight gear ratios available from 5:1 to 60:1
- Coming soon - accessory mounting kits to increase modularity for interchange to competitor's product
- WEG TG gear reducers are interchangeable to many brands, including Grove Gear, Boston Gear, Hub City, Worldwide and many more.

## MODEL NUMBER INFORMATION

STYLE	SIZE	RATIO	OUTPUT SHAFT	MOTOR MOUNT	OUTPUT BORE CODE
TQ - Quill Input	13 - 1.33" CD	5	L - Left Hand	56 -56C	(Hollow output shaft only) Refer to table below for available bores
TS- Shaft Input	15 - 1.54" CD	10	R - Right Hand	140 - 143/5TC	
	18 - 1.75" CD	15	D - Double	180 - 182/4TC	
	21 - 2.06" CD	20	H - Hollow	"Blank" - shaft input	
	24 -2.37" CD	30			
	26 - 2.63" CD	40			
		50			
		60			
<b>TQ</b>	<b>21</b>	<b>60</b>	<b>L</b>	<b>56</b>	



C-Face Input/Solid Shaft Output



C-Face or Shaft Input/  
Hollow Bore Output



Shaft Input/Solid Shaft Output



Shaft Input/Hollow Shaft Output

## TG-90 Available Output Bores

Fraction Size	Decimal Size	Output Bore Code	Reducer Size					
			13	15	18	21	24	26
5/8	0.625	10						
11/16	0.688	11						
3/4	0.750	12						
7/8	0.875	14						
1	1.000	16						
1-1/8	1.125	18						
1-3/16	1.188	19						
1-1/4	1.250	20						
1-7/16	1.438	23						
1-1/2	1.500	24						

## TG90 OVERHUNG LOAD RATINGS

Model	Single Output Shaft Max. Over-hung Load (lb)	Dual Output Shaft Max. Over-hung Load (lb)	Hollow Output Shaft Max. Over-hung Load (lb)
<b>T13</b>	425	213	425
<b>T15</b>	655	328	655
<b>T18</b>	925	463	925
<b>T21</b>	1200	600	1200
<b>T24</b>	1670	835	1670
<b>T26</b>	1665	833	1665

# TG-90™ Quill Type Speed Reducers

	Service Class I Torque Ratings (1.0 Service Factor)
	Service Class II Torque Ratings (≥ 1.4 Service Factor)
	Service Class III Torque Ratings (≥ 2.0 Service Factor)



Nominal Output RPM @ 1750 RPM In	Gear Ratio	Continuous Duty Output Torque (In-Lbs) Based on 1750 RPM Motor								Max Input HP	Max Output Torque Rating In-Lbs	NEMA Motor Mount	Catalog Number	List Price	Multi-Symbol	
		0.25	0.33	0.5	0.75	1	1.5	2	3							5
350	5:1			83	124	166					1.32	218	56C	TQ135L56SP	\$509	TG
				83	124	166					1.32	218	56C	TQ135R56SP	\$509	
				83	124	166					1.32	218	56C	TQ135D56SP	\$515	
				83	124	166					1.32	218	56C	TQ135H56SP	\$538	
					124	166	250				1.89	313	140TC	TQ155L140SP	\$558	
					124	166	250				1.89	313	140TC	TQ155R140SP	\$558	
					124	166	250				1.89	313	140TC	TQ155D140SP	\$569	
					124	166	250				1.89	313	140TC	TQ155H140SP	\$593	
						167	251	335			2.50	418	140TC	TQ185L140SP	\$575	
						167	251	335			2.50	418	140TC	TQ185R140SP	\$575	
						167	251	335			2.50	418	140TC	TQ185D140SP	\$586	
						167	251	335			2.50	418	140TC	TQ185H140SP	\$643	
							251	335	502		3.65	611	140TC	TQ215L140SP	\$590	
							251	335	502		3.65	611	140TC	TQ215R140SP	\$590	
							251	335	502		3.65	611	140TC	TQ215D140SP	\$600	
							251	335	502		3.65	611	140TC	TQ215H140SP	\$669	
								335	502	837	4.89	819	140TC	TQ245L140SP	\$712	
								335	502	837	4.89	819	140TC	TQ245R140SP	\$712	
								335	502	837	4.89	819	140TC	TQ245D140SP	\$723	
								335	502	837	4.89	819	140TC	TQ245H140SP	\$805	
								335	502	837	5.36	1037	140TC	TQ265L140SP	\$876	
								335	502	837	5.36	1037	140TC	TQ265R140SP	\$876	
								335	502	837	5.36	1037	140TC	TQ265D140SP	\$904	
								335	502	837	5.36	1037	140TC	TQ265H140SP	\$990	
175	10:1		105	158	238						0.85	269	56C	TQ1310L56SP	\$509	TG
			105	158	238						0.85	269	56C	TQ1310R56SP	\$509	
			105	158	238						0.85	269	56C	TQ1310D56SP	\$515	
			105	158	238						0.85	269	56C	TQ1310H56SP	\$538	
				160	240	321					1.19	382	140TC	TQ1510L140SP	\$558	
				160	240	321					1.19	382	140TC	TQ1510R140SP	\$558	
				160	240	321					1.19	382	140TC	TQ1510D140SP	\$569	
				160	240	321					1.19	382	140TC	TQ1510H140SP	\$593	
					243	324	486				1.59	514	140TC	TQ1810L140SP	\$575	
					243	324	486				1.59	514	140TC	TQ1810R140SP	\$575	
					243	324	486				1.59	514	140TC	TQ1810D140SP	\$586	
					243	324	486				1.59	514	140TC	TQ1810H140SP	\$643	
						324	486	648			2.33	755	140TC	TQ2110L140SP	\$590	
						324	486	648			2.33	755	140TC	TQ2110R140SP	\$590	
						324	486	648			2.33	755	140TC	TQ2110D140SP	\$600	
						324	486	648			2.33	755	140TC	TQ2110H140SP	\$669	
							492	655	983		3.18	1041	140TC	TQ2410L140SP	\$712	
							492	655	983		3.18	1041	140TC	TQ2410R140SP	\$712	
							492	655	983		3.18	1041	140TC	TQ2410D140SP	\$723	
							492	655	983		3.18	1041	140TC	TQ2410H140SP	\$805	
							492	655	983		4.00	1311	140TC	TQ2610L140SP	\$876	
							492	655	983		4.00	1311	140TC	TQ2610R140SP	\$876	
							492	655	983		4.00	1311	140TC	TQ2610D140SP	\$904	
							492	655	983		4.00	1311	140TC	TQ2610H140SP	\$990	



	Service Class I Torque Ratings (1.0 Service Factor)
	Service Class II Torque Ratings (≥ 1.4 Service Factor)
	Service Class III Torque Ratings (≥ 2.0 Service Factor)

# TG-90™ Quill Type Speed Reducers

Nominal Output RPM @ 1750 RPM In	Gear Ratio	Continuous Duty Output Torque (In-Lbs) Based on 1750 RPM Motor								Max Input HP	Max Output Torque Rating In-Lbs	NEMA Motor Mount	Catalog Number	List Price	Multi-Symbol	
		0.25	0.33	0.5	0.75	1	1.5	2	3							5
117	15:1	113	149	226							0.64	288	56C	TQ1315L56SP	\$509	TG
		113	149	226							0.64	288	56C	TQ1315R56SP	\$509	
		113	149	226							0.64	288	56C	TQ1315D56SP	\$515	
		113	149	226							0.64	288	56C	TQ1315H56SP	\$538	
			151	229	343						0.90	410	56C	TQ1515L56SP	\$558	
			151	229	343						0.90	410	56C	TQ1515R56SP	\$558	
			151	229	343						0.90	410	56C	TQ1515D56SP	\$569	
			151	229	343						0.90	410	56C	TQ1515H56SP	\$593	
				234	351	469					1.17	548	56C	TQ1815L56SP	\$575	
				234	351	469					1.17	548	56C	TQ1815R56SP	\$575	
				234	351	469					1.17	548	56C	TQ1815D56SP	\$586	
				234	351	469					1.17	548	56C	TQ1815H56SP	\$643	
					351	469	703				1.73	813	56C	TQ2115L56SP	\$590	
					351	469	703				1.73	813	56C	TQ2115R56SP	\$590	
					351	469	703				1.73	813	56C	TQ2115D56SP	\$600	
					351	469	703				1.73	813	56C	TQ2115H56SP	\$669	
						474	711	948			2.37	1123	56C	TQ2415L56SP	\$712	
						474	711	948			2.37	1123	56C	TQ2415R56SP	\$712	
						474	711	948			2.37	1123	56C	TQ2415D56SP	\$723	
						474	711	948			2.37	1123	56C	TQ2415H56SP	\$805	
					711	948	1422		2.99	1419	56C	TQ2615L56SP	\$876			
					711	948	1422		2.99	1419	56C	TQ2615R56SP	\$876			
					711	948	1422		2.99	1419	56C	TQ2615D56SP	\$904			
					711	948	1422		2.99	1419	56C	TQ2615H56SP	\$990			
88	20:1	145	191	290							0.51	295	56C	TQ1320L56SP	\$509	TG
		145	191	290							0.51	295	56C	TQ1320R56SP	\$509	
		145	191	290							0.51	295	56C	TQ1320D56SP	\$515	
		145	191	290							0.51	295	56C	TQ1320H56SP	\$538	
		145	191	290							0.72	420	56C	TQ1520L56SP	\$558	
		145	191	290							0.72	420	56C	TQ1520R56SP	\$558	
		145	191	290							0.72	420	56C	TQ1520D56SP	\$569	
		145	191	290							0.72	420	56C	TQ1520H56SP	\$593	
			199	301	451						0.94	566	56C	TQ1820L56SP	\$575	
			199	301	451						0.94	566	56C	TQ1820R56SP	\$575	
			199	301	451						0.94	566	56C	TQ1820D56SP	\$586	
			199	301	451						0.94	566	56C	TQ1820H56SP	\$643	
				301	451	602					1.39	835	56C	TQ2120L56SP	\$590	
				301	451	602					1.39	835	56C	TQ2120R56SP	\$590	
				301	451	602					1.39	835	56C	TQ2120D56SP	\$600	
				301	451	602					1.39	835	56C	TQ2120H56SP	\$669	
					457	609	913				1.89	1152	56C	TQ2420L56SP	\$712	
					457	609	913				1.89	1152	56C	TQ2420R56SP	\$712	
					457	609	913				1.89	1152	56C	TQ2420D56SP	\$723	
					457	609	913				1.89	1152	56C	TQ2420H56SP	\$805	
						609	913	1218			2.40	1461	56C	TQ2620L56SP	\$876	
						609	913	1218			2.40	1461	56C	TQ2620R56SP	\$876	
						609	913	1218			2.40	1461	56C	TQ2620D56SP	\$904	
						609	913	1218			2.40	1461	56C	TQ2620H56SP	\$990	

# TG-90™ Quill Type Speed Reducers

	Service Class I Torque Ratings (1.0 Service Factor)
	Service Class II Torque Ratings (≥ 1.4 Service Factor)
	Service Class III Torque Ratings (≥ 2.0 Service Factor)



Nominal Output RPM @ 1750 RPM In	Gear Ratio	Continuous Duty Output Torque (In-Lbs) Based on 1750 RPM Motor								Max Input HP	Max Output Torque Rating In-Lbs	NEMA Motor Mount	Catalog Number	List Price	Multi-Symbol	
		0.25	0.33	0.5	0.75	1	1.5	2	3							5
58	30:1	201	265								0.37	297	56C	TQ1330L56SP	\$509	TG
		201	265								0.37	297	56C	TQ1330R56SP	\$509	
		201	265								0.37	297	56C	TQ1330D56SP	\$515	
		201	265								0.37	297	56C	TQ1330H56SP	\$538	
		201	265	402							0.53	423	56C	TQ1530L56SP	\$558	
		201	265	402							0.53	423	56C	TQ1530R56SP	\$558	
		201	265	402							0.53	423	56C	TQ1530D56SP	\$569	
		201	265	402							0.53	423	56C	TQ1530H56SP	\$593	
		212	280	424							0.67	571	56C	TQ1830L56SP	\$575	
		212	280	424							0.67	571	56C	TQ1830R56SP	\$575	
		212	280	424							0.67	571	56C	TQ1830D56SP	\$586	
		212	280	424							0.67	571	56C	TQ1830H56SP	\$643	
				424	636	848					0.99	842	56C	TQ2130L56SP	\$590	
				424	636	848					0.99	842	56C	TQ2130R56SP	\$590	
				424	636	848					0.99	842	56C	TQ2130D56SP	\$600	
				424	636	848					0.99	842	56C	TQ2130H56SP	\$669	
				429	644	858					1.36	1165	56C	TQ2430L56SP	\$712	
				429	644	858					1.36	1165	56C	TQ2430R56SP	\$712	
				429	644	858					1.36	1165	56C	TQ2430D56SP	\$723	
				429	644	858					1.36	1165	56C	TQ2430H56SP	\$805	
					644	858	1288				1.72	1474	56C	TQ2630L56SP	\$876	
					644	858	1288				1.72	1474	56C	TQ2630R56SP	\$876	
					644	858	1288				1.72	1474	56C	TQ2630D56SP	\$904	
					644	858	1288				1.72	1474	56C	TQ2630H56SP	\$990	
44	40:1	247									0.30	292	56C	TQ1340L56SP	\$509	TG
		247									0.30	292	56C	TQ1340R56SP	\$509	
		247									0.30	292	56C	TQ1340D56SP	\$515	
		247									0.30	292	56C	TQ1340H56SP	\$538	
		247	326								0.42	419	56C	TQ1540L56SP	\$558	
		247	326								0.42	419	56C	TQ1540R56SP	\$558	
		247	326								0.42	419	56C	TQ1540D56SP	\$569	
		247	326								0.42	419	56C	TQ1540H56SP	\$593	
		261	345	523							0.54	565	56C	TQ1840L56SP	\$575	
		261	345	523							0.54	565	56C	TQ1840R56SP	\$575	
		261	345	523							0.54	565	56C	TQ1840D56SP	\$586	
		261	345	523							0.54	565	56C	TQ1840H56SP	\$643	
			345	523	784						0.80	833	56C	TQ2140L56SP	\$590	
			345	523	784						0.80	833	56C	TQ2140R56SP	\$590	
			345	523	784						0.80	833	56C	TQ2140D56SP	\$600	
			345	523	784						0.80	833	56C	TQ2140H56SP	\$669	
				530	795	1060					1.09	1154	56C	TQ2440L56SP	\$712	
				530	795	1060					1.09	1154	56C	TQ2440R56SP	\$712	
				530	795	1060					1.09	1154	56C	TQ2440D56SP	\$723	
				530	795	1060					1.09	1154	56C	TQ2440H56SP	\$805	
					795	1060	1590				1.38	1460	56C	TQ2640L56SP	\$876	
					795	1060	1590				1.38	1460	56C	TQ2640R56SP	\$876	
					795	1060	1590				1.38	1460	56C	TQ2640D56SP	\$904	
					795	1060	1590				1.38	1460	56C	TQ2640H56SP	\$990	





Service Class I Torque Ratings (1.0 Service Factor)  
 Service Class II Torque Ratings ( $\geq 1.4$  Service Factor)  
 Service Class III Torque Ratings ( $\geq 2.0$  Service Factor)

# TG-90™ Quill Type Speed Reducers

Nominal Output RPM @ 1750 RPM In	Gear Ratio	Continuous Duty Output Torque (In-Lbs) Based on 1750 RPM Motor								Max Input HP	Max Output Torque Rating In-Lbs	NEMA Motor Mount	Catalog Number	List Price	Multi-Symbol	
		0.25	0.33	0.5	0.75	1	1.5	2	3							5
35	50:1										0.24	281	56C	TQ1350L56SP	\$509	TG
											0.24	281	56C	TQ1350R56SP	\$509	
											0.24	281	56C	TQ1350D56SP	\$515	
											0.24	281	56C	TQ1350H56SP	\$538	
				380							0.35	403	56C	TQ1550L56SP	\$558	
				380							0.35	403	56C	TQ1550R56SP	\$558	
				380							0.35	403	56C	TQ1550D56SP	\$569	
				380							0.35	403	56C	TQ1550H56SP	\$593	
				404							0.44	544	56C	TQ1850L56SP	\$575	
				404							0.44	544	56C	TQ1850R56SP	\$575	
				404							0.44	544	56C	TQ1850D56SP	\$586	
				404							0.44	544	56C	TQ1850H56SP	\$643	
				410	621	932					0.65	803	56C	TQ2150L56SP	\$590	
				410	621	932					0.65	803	56C	TQ2150R56SP	\$590	
				410	621	932					0.65	803	56C	TQ2150D56SP	\$600	
				410	621	932					0.65	803	56C	TQ2150H56SP	\$669	
				416	630	945					0.88	1114	56C	TQ2450L56SP	\$712	
				416	630	945					0.88	1114	56C	TQ2450R56SP	\$712	
				416	630	945					0.88	1114	56C	TQ2450D56SP	\$723	
				416	630	945					0.88	1114	56C	TQ2450H56SP	\$805	
					630	945	1261				1.12	1410	56C	TQ2650L56SP	\$876	
					630	945	1261				1.12	1410	56C	TQ2650R56SP	\$876	
			630	945	1261				1.12	1410	56C	TQ2650D56SP	\$904			
			630	945	1261				1.12	1410	56C	TQ2650H56SP	\$990			
29	60:1									0.20	267	56C	TQ1360L56SP	\$457	TG	
										0.20	267	56C	TQ1360R56SP	\$457		
											0.20	267	56C	TQ1360D56SP		\$470
											0.20	267	56C	TQ1360H56SP		\$507
				326							0.29	383	56C	TQ1560L56SP		\$533
				326							0.29	383	56C	TQ1560R56SP		\$533
				326							0.29	383	56C	TQ1560D56SP		\$559
				326							0.29	383	56C	TQ1560H56SP		\$573
				348	459						0.37	517	56C	TQ1860L56SP		\$551
				348	459						0.37	517	56C	TQ1860R56SP		\$551
				348	459						0.37	517	56C	TQ1860D56SP		\$580
				348	459						0.37	517	56C	TQ1860H56SP		\$619
				353	466	706					0.54	762	56C	TQ2160L56SP		\$585
				353	466	706					0.54	762	56C	TQ2160R56SP		\$585
				353	466	706					0.54	762	56C	TQ2160D56SP		\$632
				353	466	706					0.54	762	56C	TQ2160H56SP		\$672
					473	717	1076				0.74	1057	56C	TQ2460L56SP		\$701
					473	717	1076				0.74	1057	56C	TQ2460R56SP		\$701
					473	717	1076				0.74	1057	56C	TQ2460D56SP		\$748
					473	717	1076				0.74	1057	56C	TQ2460H56SP		\$816
						717	1076	1434			0.93	1338	56C	TQ2660L56SP		\$868
						717	1076	1434			0.93	1338	56C	TQ2660R56SP		\$868
				717	1076	1434			0.93	1338	56C	TQ2660D56SP	\$918			
				717	1076	1434			0.93	1338	56C	TQ2660H56SP	\$983			

# TG-90™ Solid Shaft Speed Reducers

Service Class I Torque Ratings (1.0 Service Factor)  
 Service Class II Torque Ratings (≥ 1.4 Service Factor)  
 Service Class III Torque Ratings (≥ 2.0 Service Factor)



Nominal Output RPM @ 1750 RPM In	Gear Ratio	Continuous Duty Output Torque (In-Lbs) Based on Motor HP at 1750 RPM									Max Input HP	Max Output Torque Rating In-Lbs	Catalog Number	List Price	Multi. Symbol		
		0.25	0.33	0.5	0.75	1	1.5	2	3	5							
350	5:1			83	124	166						1.32	218	TS135LSP	\$457	TG	
				83	124	166							1.32	218	TS135RSP		\$457
				83	124	166							1.32	218	TS135DSP		\$470
				83	124	166							1.32	218	TS135HSP		\$507
					124	166	250						1.89	313	TS155LSP		\$533
					124	166	250						1.89	313	TS155RSP		\$533
					124	166	250						1.89	313	TS155DSP		\$559
					124	166	250						1.89	313	TS155HSP		\$573
						167	251	335					2.50	418	TS185LSP		\$551
						167	251	335					2.50	418	TS185RSP		\$551
						167	251	335					2.50	418	TS185DSP		\$580
						167	251	335					2.50	418	TS185HSP		\$619
							251	335	502				3.65	611	TS215LSP		\$585
							251	335	502				3.65	611	TS215RSP		\$585
							251	335	502				3.65	611	TS215DSP		\$632
							251	335	502				3.65	611	TS215HSP		\$672
								335	502	837			4.89	819	TS245LSP		\$701
								335	502	837			4.89	819	TS245RSP		\$701
								335	502	837			4.89	819	TS245DSP		\$748
								335	502	837			4.89	819	TS245HSP		\$816
								335	502	837			5.36	1037	TS265LSP		\$868
								335	502	837			5.36	1037	TS265RSP		\$868
								335	502	837			5.36	1037	TS265DSP		\$918
								335	502	837			5.36	1037	TS265HSP		\$983
175	10:1		105	158	238							0.85	269	TS1310LSP	\$457	TG	
			105	158	238								0.85	269	TS1310RSP		\$457
			105	158	238								0.85	269	TS1310DSP		\$470
			105	158	238								0.85	269	TS1310HSP		\$507
				160	240	321							1.19	382	TS1510LSP		\$533
				160	240	321							1.19	382	TS1510RSP		\$533
				160	240	321							1.19	382	TS1510DSP		\$559
				160	240	321							1.19	382	TS1510HSP		\$573
					243	324	486						1.59	514	TS1810LSP		\$551
					243	324	486						1.59	514	TS1810RSP		\$551
					243	324	486						1.59	514	TS1810DSP		\$580
					243	324	486						1.59	514	TS1810HSP		\$619
						324	486	648					2.33	755	TS2110LSP		\$585
						324	486	648					2.33	755	TS2110RSP		\$585
						324	486	648					2.33	755	TS2110DSP		\$632
						324	486	648					2.33	755	TS2110HSP		\$672
							492	655	983				3.18	1041	TS2410LSP		\$701
							492	655	983				3.18	1041	TS2410RSP		\$701
							492	655	983				3.18	1041	TS2410DSP		\$748
							492	655	983				3.18	1041	TS2410HSP		\$816
							492	655	983				4.00	1311	TS2610LSP		\$868
							492	655	983				4.00	1311	TS2610RSP		\$868
							492	655	983				4.00	1311	TS2610DSP		\$918
							492	655	983				4.00	1311	TS2610HSP		\$983





	Service Class I Torque Ratings (1.0 Service Factor)
	Service Class II Torque Ratings (≥ 1.4 Service Factor)
	Service Class III Torque Ratings (≥ 2.0 Service Factor)

# TG-90™ Solid Shaft Speed Reducers

Nominal Output RPM @ 1750 RPM In	Gear Ratio	Continuous Duty Output Torque (In-Lbs) Based on Motor HP at 1750 RPM								Max Input HP	Max Output Torque Rating In-Lbs	Catalog Number	List Price	Multi. Symbol	
		0.25	0.33	0.5	0.75	1	1.5	2	3						5
117	15:1	113	149	226							0.64	288	TS1315LSP	\$457	TG
		113	149	226							0.64	288	TS1315RSP	\$457	
		113	149	226							0.64	288	TS1315DSP	\$470	
		113	149	226							0.64	288	TS1315HSP	\$507	
			151	229	343						0.90	410	TS1515LSP	\$533	
			151	229	343						0.90	410	TS1515RSP	\$533	
			151	229	343						0.90	410	TS1515DSP	\$559	
			151	229	343						0.90	410	TS1515HSP	\$573	
				234	351	469					1.17	548	TS1815LSP	\$551	
				234	351	469					1.17	548	TS1815RSP	\$551	
				234	351	469					1.17	548	TS1815DSP	\$580	
				234	351	469					1.17	548	TS1815HSP	\$619	
					351	469	703				1.73	813	TS2115LSP	\$585	
					351	469	703				1.73	813	TS2115RSP	\$585	
					351	469	703				1.73	813	TS2115DSP	\$632	
					351	469	703				1.73	813	TS2115HSP	\$672	
						474	711	948			2.37	1123	TS2415LSP	\$701	
						474	711	948			2.37	1123	TS2415RSP	\$701	
						474	711	948			2.37	1123	TS2415DSP	\$748	
						474	711	948			2.37	1123	TS2415HSP	\$816	
							711	948	1422		2.99	1419	TS2615LSP	\$868	
							711	948	1422		2.99	1419	TS2615RSP	\$868	
							711	948	1422		2.99	1419	TS2615DSP	\$918	
							711	948	1422		2.99	1419	TS2615HSP	\$983	
88	20:1	145	191	290							0.51	295	TS1320LSP	\$457	TG
		145	191	290							0.51	295	TS1320RSP	\$457	
		145	191	290							0.51	295	TS1320DSP	\$470	
		145	191	290							0.51	295	TS1320HSP	\$507	
		145	191	290							0.72	420	TS1520LSP	\$533	
		145	191	290							0.72	420	TS1520RSP	\$533	
		145	191	290							0.72	420	TS1520DSP	\$559	
		145	191	290							0.72	420	TS1520HSP	\$573	
			199	301	451						0.94	566	TS1820LSP	\$551	
			199	301	451						0.94	566	TS1820RSP	\$551	
			199	301	451						0.94	566	TS1820DSP	\$580	
			199	301	451						0.94	566	TS1820HSP	\$619	
				301	451	602					1.39	835	TS2120LSP	\$585	
				301	451	602					1.39	835	TS2120RSP	\$585	
				301	451	602					1.39	835	TS2120DSP	\$632	
				301	451	602					1.39	835	TS2120HSP	\$672	
					457	609	913				1.89	1152	TS2420LSP	\$701	
					457	609	913				1.89	1152	TS2420RSP	\$701	
					457	609	913				1.89	1152	TS2420DSP	\$748	
					457	609	913				1.89	1152	TS2420HSP	\$816	
						609	913	1218			2.40	1461	TS2620LSP	\$868	
						609	913	1218			2.40	1461	TS2620RSP	\$868	
						609	913	1218			2.40	1461	TS2620DSP	\$918	
						609	913	1218			2.40	1461	TS2620HSP	\$983	

# TG-90™ Solid Shaft Speed Reducers

Service Class I Torque Ratings (1.0 Service Factor)  
 Service Class II Torque Ratings (≥ 1.4 Service Factor)  
 Service Class III Torque Ratings (≥ 2.0 Service Factor)



Nominal Output RPM @ 1750 RPM In	Gear Ratio	Continuous Duty Output Torque (In-Lbs) Based on Motor HP at 1750 RPM									Max Input HP	Max Output Torque Rating In-Lbs	Catalog Number	List Price	Multi-Symbol	
		0.25	0.33	0.5	0.75	1	1.5	2	3	5						
58	30:1	201	265									0.37	297	TS1330LSP	\$457	TG
		201	265									0.37	297	TS1330RSP	\$457	
		201	265									0.37	297	TS1330DSP	\$470	
		201	265									0.37	297	TS1330HSP	\$507	
		201	265	402								0.53	423	TS1530LSP	\$533	
		201	265	402								0.53	423	TS1530RSP	\$533	
		201	265	402								0.53	423	TS1530DSP	\$559	
		201	265	402								0.53	423	TS1530HSP	\$573	
		212	280	424								0.67	571	TS1830LSP	\$551	
		212	280	424								0.67	571	TS1830RSP	\$551	
		212	280	424								0.67	571	TS1830DSP	\$580	
		212	280	424								0.67	571	TS1830HSP	\$619	
				424	636	848						0.99	842	TS2130LSP	\$585	
				424	636	848						0.99	842	TS2130RSP	\$585	
				424	636	848						0.99	842	TS2130DSP	\$632	
				424	636	848						0.99	842	TS2130HSP	\$672	
				429	644	858						1.36	1165	TS2430LSP	\$701	
				429	644	858						1.36	1165	TS2430RSP	\$701	
				429	644	858						1.36	1165	TS2430DSP	\$748	
				429	644	858						1.36	1165	TS2430HSP	\$816	
					644	858	1288					1.72	1474	TS2630LSP	\$868	
					644	858	1288					1.72	1474	TS2630RSP	\$868	
					644	858	1288					1.72	1474	TS2630DSP	\$918	
					644	858	1288					1.72	1474	TS2630HSP	\$983	
44	40:1	247										0.30	292	TS1340LSP	\$457	TG
		247										0.30	292	TS1340RSP	\$457	
		247										0.30	292	TS1340DSP	\$470	
		247										0.30	292	TS1340HSP	\$507	
		247	326									0.42	419	TS1540LSP	\$533	
		247	326									0.42	419	TS1540RSP	\$533	
		247	326									0.42	419	TS1540DSP	\$559	
		247	326									0.42	419	TS1540HSP	\$573	
		261	345	523								0.54	565	TS1840LSP	\$551	
		261	345	523								0.54	565	TS1840RSP	\$551	
		261	345	523								0.54	565	TS1840DSP	\$580	
		261	345	523								0.54	565	TS1840HSP	\$619	
			345	523	784							0.80	833	TS2140LSP	\$585	
			345	523	784							0.80	833	TS2140RSP	\$585	
			345	523	784							0.80	833	TS2140DSP	\$632	
			345	523	784							0.80	833	TS2140HSP	\$672	
				530	795	1060						1.09	1154	TS2440LSP	\$701	
				530	795	1060						1.09	1154	TS2440RSP	\$701	
				530	795	1060						1.09	1154	TS2440DSP	\$748	
				530	795	1060						1.09	1154	TS2440HSP	\$816	
					795	1060	1590					1.38	1460	TS2640LSP	\$868	
					795	1060	1590					1.38	1460	TS2640RSP	\$868	
					795	1060	1590					1.38	1460	TS2640DSP	\$918	
					795	1060	1590					1.38	1460	TS2640HSP	\$983	

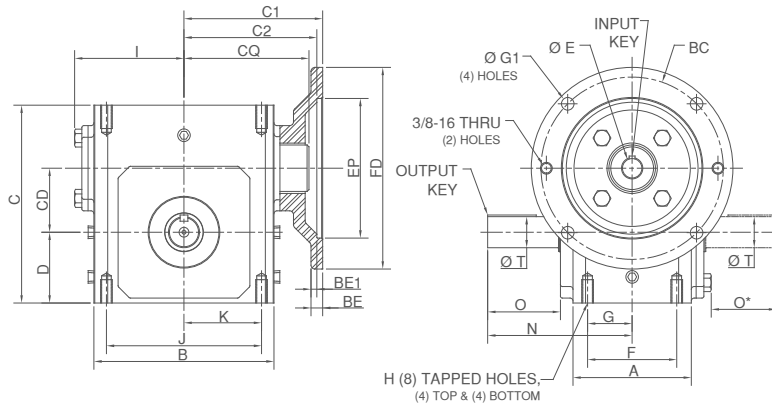


	Service Class I Torque Ratings (1.0 Service Factor)
	Service Class II Torque Ratings (≥ 1.4 Service Factor)
	Service Class III Torque Ratings (≥ 2.0 Service Factor)

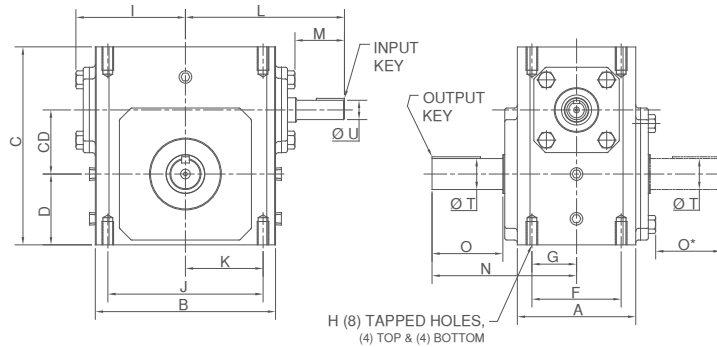
# TG-90™ Solid Shaft Speed Reducers

Nominal Output RPM @ 1750 RPM In	Gear Ratio	Continuous Duty Output Torque (In-Lbs) Based on Motor HP at 1750 RPM								Max Input HP	Max Output Torque Rating In-Lbs	Catalog Number	List Price	Multi-Symbol	
		0.25	0.33	0.5	0.75	1	1.5	2	3						5
35	50:1										0.24	281	TS1350LSP	\$457	TG
											0.24	281	TS1350RSP	\$457	
											0.24	281	TS1350DSP	\$470	
											0.24	281	TS1350HSP	\$507	
				380							0.35	403	TS1550LSP	\$533	
				380							0.35	403	TS1550RSP	\$533	
				380							0.35	403	TS1550DSP	\$559	
				380							0.35	403	TS1550HSP	\$573	
				404							0.44	544	TS1850LSP	\$551	
				404							0.44	544	TS1850RSP	\$551	
				404							0.44	544	TS1850DSP	\$580	
				404							0.44	544	TS1850HSP	\$619	
				410	621	932					0.65	803	TS2150LSP	\$585	
				410	621	932					0.65	803	TS2150RSP	\$585	
				410	621	932					0.65	803	TS2150DSP	\$632	
				410	621	932					0.65	803	TS2150HSP	\$672	
				416	630	945					0.88	1114	TS2450LSP	\$701	
				416	630	945					0.88	1114	TS2450RSP	\$701	
				416	630	945					0.88	1114	TS2450DSP	\$748	
				416	630	945					0.88	1114	TS2450HSP	\$816	
					630	945	1261				1.12	1410	TS2650LSP	\$868	
					630	945	1261				1.12	1410	TS2650RSP	\$868	
					630	945	1261				1.12	1410	TS2650DSP	\$918	
					630	945	1261				1.12	1410	TS2650HSP	\$983	
29	60:1										0.20	267	TS1360LSP	\$457	TG
											0.20	267	TS1360RSP	\$457	
											0.20	267	TS1360DSP	\$470	
											0.20	267	TS1360HSP	\$507	
				326							0.29	383	TS1560LSP	\$533	
				326							0.29	383	TS1560RSP	\$533	
				326							0.29	383	TS1560DSP	\$559	
				326							0.29	383	TS1560HSP	\$573	
				348	459						0.37	517	TS1860LSP	\$551	
				348	459						0.37	517	TS1860RSP	\$551	
				348	459						0.37	517	TS1860DSP	\$580	
				348	459						0.37	517	TS1860HSP	\$619	
				353	466	706					0.54	762	TS2160LSP	\$585	
				353	466	706					0.54	762	TS2160RSP	\$585	
				353	466	706					0.54	762	TS2160DSP	\$632	
				353	466	706					0.54	762	TS2160HSP	\$672	
					473	717	1076				0.74	1057	TS2460LSP	\$701	
					473	717	1076				0.74	1057	TS2460RSP	\$701	
					473	717	1076				0.74	1057	TS2460DSP	\$748	
					473	717	1076				0.74	1057	TS2460HSP	\$816	
					717	1076	1434				0.93	1338	TS2660LSP	\$868	
					717	1076	1434				0.93	1338	TS2660RSP	\$868	
					717	1076	1434				0.93	1338	TS2660DSP	\$918	
					717	1076	1434				0.93	1338	TS2660HSP	\$983	

## TG90 Style TQ - Motorized Input / Solid Output Shaft



## TG90 Style TS - Shaft Input / Solid Output Shaft



### STYLE TQ / TS DIMENSIONS (Inches)

SIZE	A	B	C	CD	D	F	G	H	I	J	K	L	M	N	O	O*	T DIA +0.000 -0.002	U DIA +0.000 -0.001	Input Key	Output Key
T13	2.88	3.82	4.66	1.33	1.72	2.000	1.000	5/16-18 X .44 DEEP	2.68	3.250	1.625	3.82	1.28	4.00	2.16	1.94	0.625	0.500	1/8 SQ. x .88 LG.	3/16 SQ.X 1.38 LG.
T15	3.44	4.88	5.38	1.54	1.91	2.750	1.375	5/16-18 X .62 DEEP	3.12	4.188	2.094	4.77	1.72	4.31	2.00	1.79	0.750	0.625	3/16 SQ. x .88 LG.	3/16 SQ.X 1.38 LG.
T18	3.56	5.06	5.75	1.75	2.06	2.750	1.375	5/16-18 X .62 DEEP	3.16	4.188	2.094	4.88	1.56	4.34	2.06	1.85	0.875	0.625	3/16 SQ. x .88 LG.	3/16SQ.X 1.38 LG.
T21	3.81	5.81	6.38	2.06	2.28	2.875	1.438	3/8-16 X .75 DEEP	3.53	5.000	2.500	5.12	1.56	4.66	2.28	2.07	1.000	0.625	3/16 SQ. x .88 LG.	1/4 SQ.X 1.75 LG.
T24	4.06	6.13	6.94	2.38	2.50	2.875	1.438	3/8-16 X .75 DEEP	3.69	5.000	2.500	5.88	2.19	5.12	2.53	2.31	1.125	0.750	3/16 SQ. x 1.50 LG.	1/4 SQ.X 1.75 LG.
T26	4.44	7.38	8.00	2.63	2.94	3.375	1.688	3/8-16 X .75 DEEP	4.24	6.375	3.188	6.05	1.81	5.63	2.94	2.73	1.250	0.750	3/16 SQ. x 1.50 LG.	1/4 SQ.X 1.75 LG.

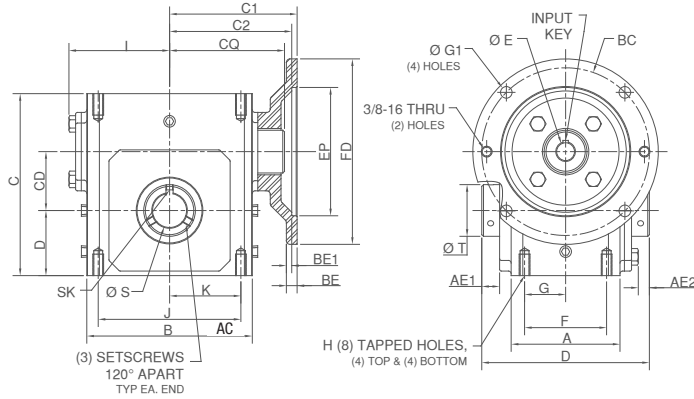
### MOTOR MOUNTING DIMENSIONS (Inches)

SIZE	C1 56C/140TC	C2 180TC	CQ	
			56C/140TC	180TC
T13	3.44	N/A	3.12	N/A
T15	4.00	N/A	3.38	N/A
T18	4.09	N/A	3.59	N/A
T21	4.47	N/A	4.06	N/A
T24	4.62	5.07	4.12	4.10
T26	5.19	5.63	4.82	4.83

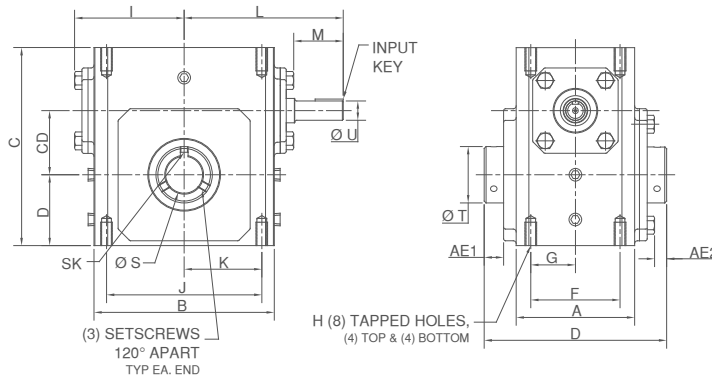
### NEMA DIMENSIONS (Inches)

Motor Frame	BC	EP	FD	BE	BE1	E BORE DIA	Input Keyway	G1
56C	5.88	4.50	6.50	0.38	N/A	0.625	3/16 x 3/32	0.41
140TC	5.88	4.50	6.50	0.38	N/A	0.875	3/16 X 3/32	0.41
180TC	7.25	8.50	9.00	N/A	0.50	1.125	1/4 x 1/8	0.53

## TG90 Style TQ - Motorized Input / Hollow Output Shaft



## TG90 Style TS - Shaft Input / Hollow Output Shaft



### STYLE TQ / TS DIMENSIONS (Inches)

SIZE	A	AC	AE1	AE2	B	C	CD	D	F	G	H	I	J	K	L	M	N	S BORE MAX -0.000 +0.002	U DIA +0.000 -0.001	Input Key	Output Key (Max Bore)
T13	2.88	6.05	0.53	0.32	3.82	4.66	1.33	1.72	2.000	1.000	5/16-18 X .44 DEEP	2.68	3.250	1.625	3.82	1.28	4.00	0.625	0.500	1/8 SQ. x .88 LG.	3/16 SQ.X 1.50 LG.
T15	3.44	6.64	0.53	0.32	4.88	5.38	1.54	1.91	2.750	1.375	5/16-18 X .62 DEEP	3.12	4.188	2.094	4.77	1.72	4.31	0.625	0.625	3/16 SQ. x .88 LG.	3/16 SQ.X 1.50 LG.
T18	3.56	6.75	0.49	0.28	5.06	5.75	1.75	2.06	2.750	1.375	5/16-18 X .62 DEEP	3.16	4.188	2.094	4.88	1.56	4.34	1.000	0.625	3/16 SQ. x .88 LG.	1/4SQ.X 3.00 LG.
T21	3.81	7.20	0.61	0.40	5.81	6.38	2.06	2.28	2.875	1.438	3/8-16 X .75 DEEP	3.53	5.000	2.500	5.12	1.56	4.66	1.250	0.625	3/16 SQ. x .88 LG.	3/8 SQ.X 3.00 LG.
T24	4.06	8.81	0.51	0.30	6.13	6.94	2.38	2.50	2.875	1.438	3/8-16 X .75 DEEP	3.69	5.000	2.500	5.88	2.19	5.12	1.500	0.750	3/16 SQ. x 1.50 LG.	3/8 SQ.X 3.00 LG.
T26	4.44	8.49	0.6	0.39	7.38	8.00	2.63	2.94	3.375	1.688	3/8-16 X .75 DEEP	4.24	6.375	3.188	6.05	1.81	5.63	1.500	0.750	3/16 SQ. x 1.50 LG.	3/8 SQ.X 3.00 LG.

### MOTOR MOUNTING DIMENSIONS (Inches)

SIZE	C1 56C/140TC	C2 180TC	CQ	
			56C/140TC	180TC
T13	3.44	N/A	3.12	N/A
T15	4.00	N/A	3.38	N/A
T18	4.09	N/A	3.59	N/A
T21	4.47	N/A	4.06	N/A
T24	4.62	5.07	4.12	4.10
T26	5.19	5.63	4.82	4.83

### NEMA DIMENSIONS (Inches)

Motor Frame	BC	EP	FD	BE	BE1	E BORE DIA	Input Keyway	G1
56C	5.88	4.50	6.50	0.38	N/A	0.625	3/16 x 3/32	0.41
140TC	5.88	4.50	6.50	0.38	N/A	0.875	3/16 X 3/32	0.41
180TC	7.25	8.50	9.00	N/A	0.50	1.125	1/4 x 1/8	0.53







WEG's scope of solutions is not limited to the products and solutions presented in this brochure.

**Contact WEG for information on additional products and solutions.**

**For WEG's worldwide operations visit our website**



**[www.weg.net](http://www.weg.net)**



 **1-800-ASK-4WEG**

 **info-us@weg.net**

 **Duluth, GA**

USA.TG.90.09.2023

Information contained herein is subject to change without notice.