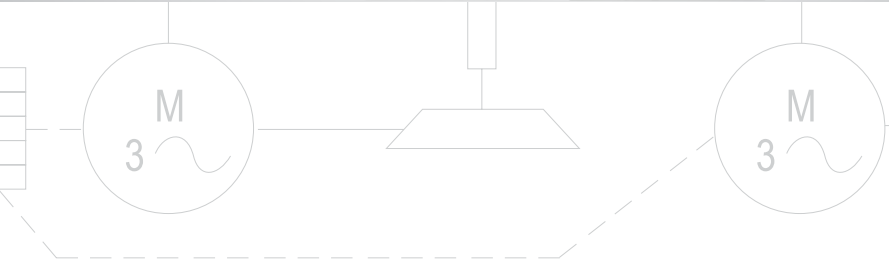
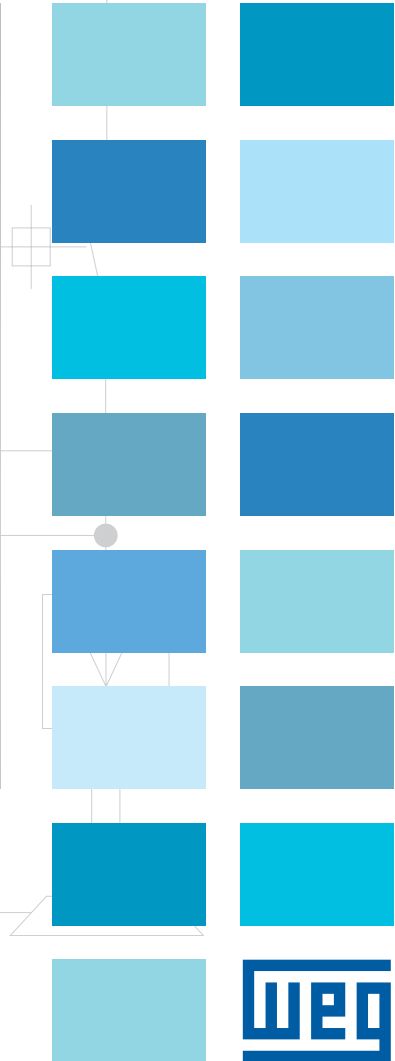
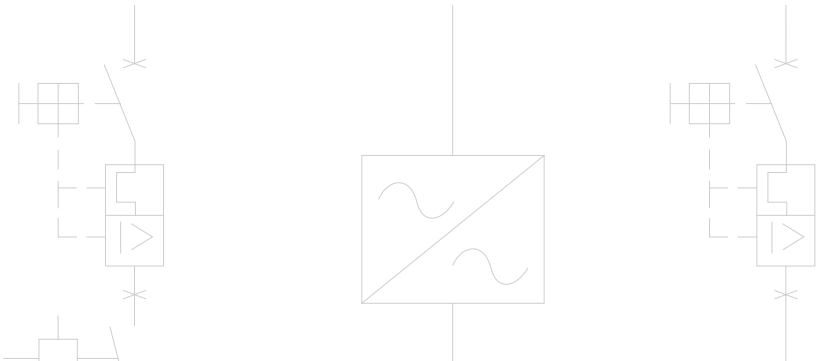
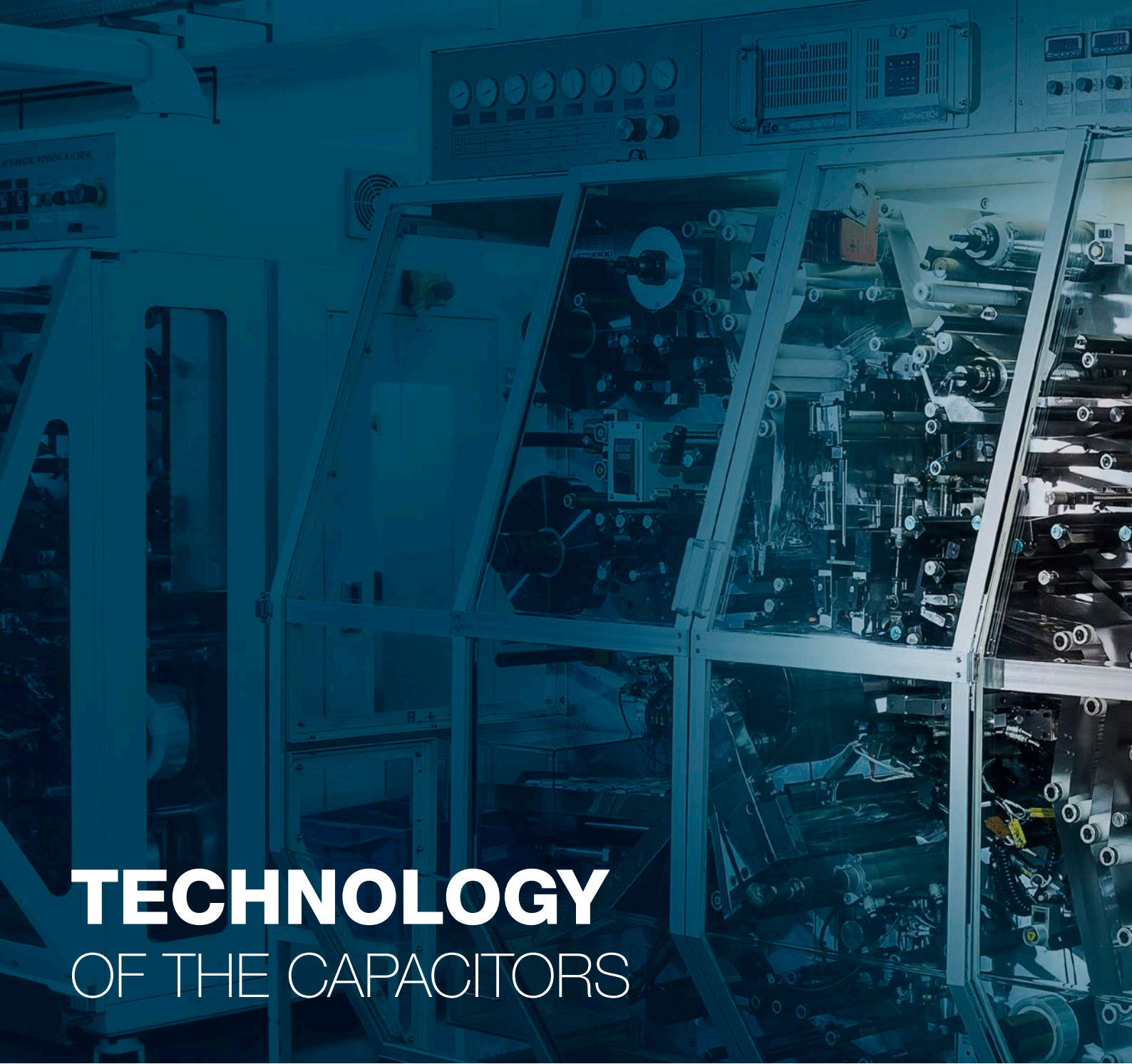


Automation

CLAW and CILW Lighting Capacitors



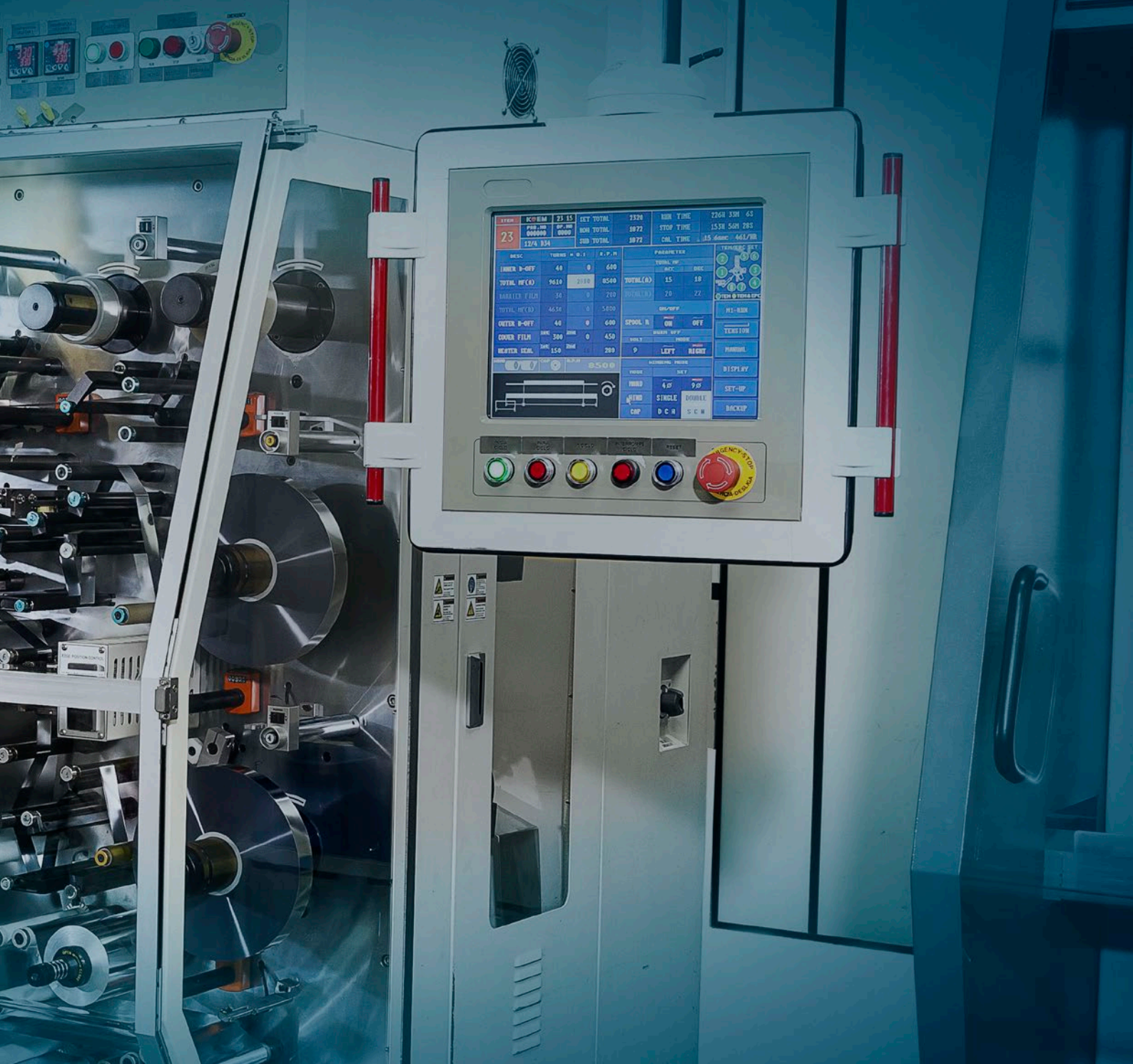


TECHNOLOGY OF THE CAPACITORS

WEG lighting capacitors are used to correct the power factor of electromagnetic ballasts, increasing the energy efficiency and reducing the electric energy consumption.

Manufactured according to **IEC 61048 and IEC 61049 standards**, WEG capacitors offer **high reliability, safety, and robustness**, and use a self-healing metallized polypropylene film.

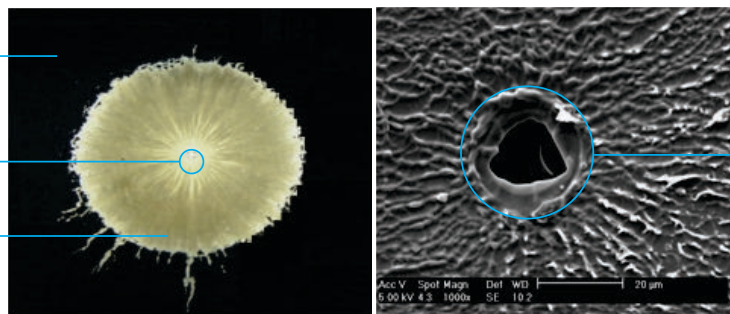
The metallized polypropylene film has self-healing characteristics, enabling the fast reestablishment of the capacitor electrical properties after a dielectric breakdown. As shown in the following pictures, at the moment of the dielectric breakdown, which may be caused by an electric and/or a thermal overload or by the end of the service life, the metal coating around the breakdown is vaporized and the short circuit is insulated.



Metallized electrode

Dielectric breakdown area

Self-healing area



Dielectric breakdown area
(zoom: 1,000 times)



WEG Lighting Capacitor - CLAW

General Applications

- Electromagnetic ballasts for lighting circuits

Reference Standards

- IEC 61048
- IEC 61049

Characteristics

- Life expectancy of 30,000 hours
- Self-healing capacitor
- Compliance with RoHS requirements

Safety

- Self-healing characteristics: after a dielectric breakdown, the electrical properties of the capacitor are quickly and essentially restored to the state before the fault
- The case uses materials with flammability V2



Technical Data

Line	CLAW
Capacitance range	2...60 μ F
Tolerance	\pm 5%
Rated voltage	250 V ac
Frequency	50/60 Hz
Life expectancy	30,000 hours
Class of safety protection	Type A - without protection
Maximum voltage	1.1 x V_R
Maximum current	1.3 x I_R
Dielectric watt losses	<0.2 W/kvar
Climate category	25/85/21
Minimum operating temperature	-25 °C
Maximum operating temperature	+85 °C
Minimum storage temperature	-40 °C
Maximum storage temperature	+90 °C
Maximum altitude	2,000 m
Dielectric	Polypropylene
Case material	PP V2
Filling material	Solid polyurethane resin (no PCB)
Degree of protection	IP00
Terminals	Single faston terminal (6.3 x 0.8 mm) Double faston terminal (6.3 x 0.8 mm) Wire terminal 0.5 mm ²
Reference standards	IEC 61048 / IEC 61049
Certifications	   
RoHS compliance	
Optional items	
Discharge resistor	Discharge time 30 seconds ¹⁾
Capacitor fixing	M8 x 10 mm bolt
Maximum torque for capacitor fixing	5 N.m

Note: 1) Discharge resistors sized for the voltage on the capacitor terminals remains at 1/10 of the rated voltage in 30s.



Product Line: CLAW

CLAW line 250 V - 50/60 Hz							
Capacitance (μ F)	Description	Dimensions without bolt		Dimensions with bolt		Approximate weight (kg)	Resistor (k Ω) ¹⁾
		D (mm)	H (mm)	D (mm)	H (mm)		
2	CLAW2D26 A ♦	25	56	25	56	0.036	390
3	CLAW3D26 A ♦	25	56	25	56	0.036	390
4	CLAW4D26 A ♦	25	56	25	56	0.036	390
5	CLAW5D26 A ♦	25	56	25	56	0.037	390
6	CLAW6D26 A ♦	30	56	30	59	0.039	390
7	CLAW7D26 A ♦	30	56	30	59	0.039	390
8	CLAW8D26 A ♦	30	56	30	59	0.040	390
9	CLAW9D26 A ♦	30	56	30	59	0.040	390
10	CLAW10D26 A ♦	35	56	35	59	0.048	390
11	CLAW11D26 A ♦	35	56	35	59	0.049	390
12	CLAW12D26 A ♦	35	56	35	59	0.052	390
12.5	CLAW12,5D26 A ♦	35	56	35	59	0.052	390
14	CLAW14D26 A ♦	35	56	35	59	0.055	390
15	CLAW15D26 A ♦	35	74	35	78	0.060	390
16	CLAW16D26 A ♦	35	74	35	78	0.060	390
18	CLAW18D26 A ♦	35	74	35	78	0.062	390
20	CLAW20D26 A ♦	35	74	35	78	0.066	390
25	CLAW25D26 A ♦	40	78	40	74	0.085	390
30	CLAW30D26 A ♦	40	78	40	74	0.095	180
33	CLAW33D26 A ♦	40	94	40	98	0.095	180
35	CLAW35D26 A ♦	40	94	40	98	0.115	180
40	CLAW40D26 A ♦	40	94	40	98	0.125	180
45	CLAW45D26 A ♦	40	94	40	98	0.147	180
50	CLAW50D26 A ♦	45	94	45	94	0.153	180
60	CLAW60D26 A ♦	45	94	45	94	0.163	180

Replace “♦” by the terminal code.

Code	Description	Code	Description
TS	Single faston terminal	TS-P	Single faston terminal + bolt
TD	Double faston terminal	TD-P	Double faston terminal + bolt
TF200	Wire terminal 200 mm	TF200-P	Wire terminal 200 mm + bolt
TS-R	Single faston terminal + resistor	TS-PR	Single faston terminal + bolt + resistor
TD-R	Double faston terminal + resistor	TD-PR	Double faston terminal +bolt + resistor
TF200-R	Wire terminal 200 mm + resistor	TF200-PR	Wire terminal 200 mm + bolt + resistor

Notes: 1) Optional discharge resistor;

2) Double faston terminal not available in case 25 x 56;

3) Other cable lengths on request.



WEG Lighting Capacitor - CILW

General Applications

- Electromagnetic ballasts for lighting circuits

Reference Standards

- IEC 61048

Characteristics

- Life expectancy of 10,000 hours
- Self-healing capacitor
- Compliance with RoHS requirements



Safety

- Self-healing characteristics: after a dielectric breakdown, the electrical properties of the capacitor are quickly and essentially restored to the state before the fault
- The case uses materials with flammability V2



WEG Lighting Capacitor - CILW

Technical Data

Line	CILW
Capacitance range	2...60 μ F
Tolerance	\pm 5%
Rated voltage	250 V ac
Frequency	50/60 Hz
Life expectancy	10,000 hours
Class of safety protection	Type A - without protection
Maximum voltage	$1.1 \times V_R$
Maximum current	$1.3 \times I_R$
Dielectric watt losses	<0.2 W/kvar
Climate category	25/85/21
Minimum operating temperature	-25 °C
Maximum operating temperature	+85 °C
Minimum storage temperature	-40 °C
Maximum storage temperature	+90 °C
Maximum altitude	2,000 m
Dielectric	Polypropylene
Case material	PP V2
Filling material	Solid polyurethane resin (no PCB)
Degree of protection	IP00
Terminals	Single faston terminal (6.3 x 0.8 mm) Double faston terminal (6.3 x 0.8 mm) Wire terminal 0.5 mm ²
Reference standards	IEC 61048
Certifications	
RoHS compliance	
Optional items	
Discharge resistor	Discharge time 30 seconds ¹⁾
Capacitor fixing	M8 x 10 mm bolt
Maximum torque for capacitor fixing	5 N.m

Note: 1) Discharge resistors sized for the voltage on the capacitor terminals remains at 1/10 of the rated voltage in 30s.



Product Line: CILW

CILW line 250 V - 50/60 Hz							
Capacitance (µF)	Description	Dimensions without bolt		Dimensions with bolt		Approximate weight (kg)	Resistor (kΩ) ¹⁾
		D (mm)	H (mm)	D (mm)	H (mm)		
2	CILW2D26 A ♦	25	56	25	56	0.036	390
3	CILW3D26 A ♦	25	56	25	56	0.036	390
4	CILW4D26 A ♦	25	56	25	56	0.036	390
5	CILW5D26 A ♦	25	56	25	56	0.037	390
6	CILW6D26 A ♦	25	56	25	56	0.039	390
7	CILW7D26 A ♦	25	56	25	56	0.039	390
8	CILW8D26 A ♦	25	56	25	56	0.040	390
9	CILW9D26 A ♦	25	56	25	56	0.040	390
10	CILW10D26 A ♦	30	56	30	59	0.048	390
11	CILW11D26 A ♦	30	56	30	59	0.049	390
12	CILW12D26 A ♦	30	56	30	59	0.052	390
12.5	CILW12,5D26 A ♦	30	56	30	59	0.052	390
14	CILW14D26 A ♦	30	56	30	59	0.055	390
15	CILW15D26 A ♦	30	56	30	59	0.060	390
16	CILW16D26 A ♦	35	56	35	59	0.060	390
18	CILW18D26 A ♦	35	56	35	59	0.062	390
20	CILW20D26 A ♦	35	56	35	59	0.066	390
25	CILW25D26 A ♦	35	56	35	59	0.085	390
30	CILW30D26 A ♦	35	74	35	78	0.095	180
33	CILW33D26 A ♦	35	74	35	78	0.095	180
35	CILW35D26 A ♦	35	74	35	78	0.115	180
40	CILW40D26 A ♦	40	78	40	74	0.125	180
45	CILW45D26 A ♦	40	78	40	74	0.147	180
50	CILW50D26 A ♦	40	78	40	74	0.153	180
60	CILW60D26 A ♦	45	74	45	74	0.163	180

Replace “♦” by the terminal code.

Code	Description	Code	Description
TS	Single faston terminal	TS-P	Single faston terminal + bolt
TD	Double faston terminal	TD-P	Double faston terminal + bolt
TF200	Wire terminal 200 mm	TF200-P	Wire terminal 200 mm + bolt
TS-R	Single faston terminal + resistor	TS-PR	Single faston terminal + bolt + resistor
TD-R	Double faston terminal + resistor	TD-PR	Double faston terminal + bolt + resistor
TF200-R	Wire terminal 200 mm + resistor	TF200-PR	Wire terminal 200 mm + bolt + resistor

- Notes: 1) Optional discharge resistor;
 2) Double faston terminal not available in case 25 x 56;
 3) Other cable lengths on request.

Selection Code

CLAW 15 D26 A TF200 R

Model

Line
CLAW
CILW

Capacitance (µF)

Application Voltage

Code	Voltage
D26	250 V - 50/60 Hz

Class of Safety Protection

Code	Category
A	Not protected

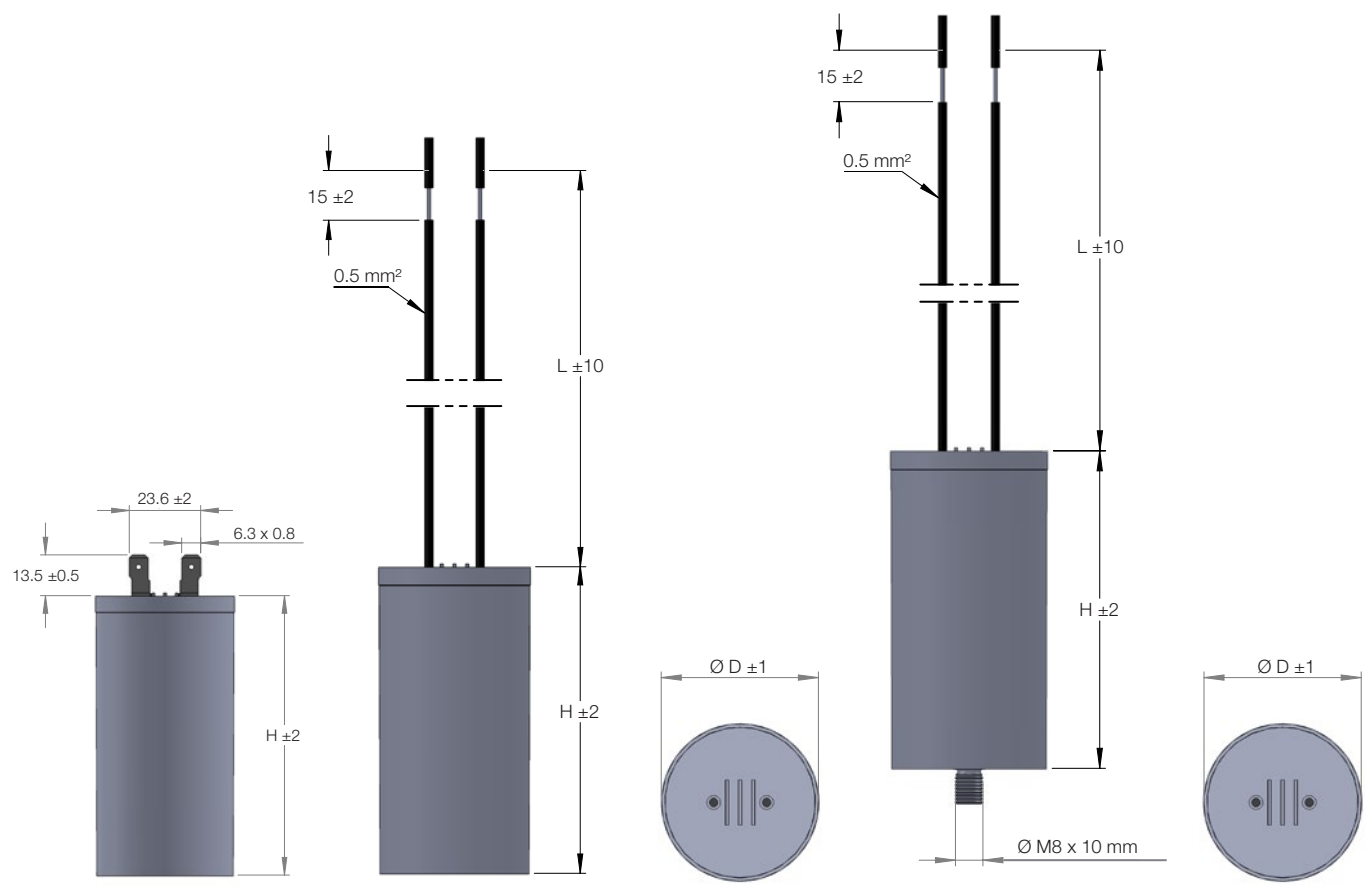
Optional Items

Code	Options
R	Resistor
P	M8 bolt
PR	M8 bolt + resistor

Terminal

Code	Terminal type
TF200	Wire 200 mm
TS	Single faston
TD	Double faston

Dimension Drawings of the CLAW and CILW Lines



Global presence is essential,
as much as understanding your needs.

Global Presence

With more than 30.000 employees worldwide, WEG is one of the largest electric motors, electronic equipments and systems manufacturers. We are constantly expanding our portfolio of products and services with expertise and market knowledge. We create integrated and customized solutions ranging from innovative products to complete after-sales service.

WEG's know-how guarantees our **CLAW and CILW Lighting Capacitors** is the right choice for your application and business, assuring safety, efficiency and reliability.



Availability is to have a global support network



Partnership is to create solutions that suit your needs



Competitive edge is to unite technology and innovation

Know More

High performance and reliable products to improve your production process.

Excellence is to provide a whole solution in industrial automation that improves our customers productivity.



Visit:

www.weg.net



youtube.com/wegvideos

WEG Worldwide Operations

ARGENTINA

San Francisco - Cordoba
Phone: +54 3564 421484
info-ar@weg.net

Cordoba - Cordoba
Phone: +54 3514 641366
weg-morbe@weg.com.ar

Buenos Aires
Phone: +54 1142 998000
ventas@pulverlux.com.ar

AUSTRALIA

Scoresby - Victoria
Phone: +61 3 97654600
info-au@weg.net

AUSTRIA

Markt Piesting - Wiener
Neustadt-Land
Phone: +43 2 633 4040
watt@wattdrive.com

Vienna
Phone: +43 1 796 2048
wtr@weg.net

BELGIUM

Nivelles - Belgium
Phone: +32 67 888420
info-be@weg.net

BRAZIL

Jaraguá do Sul - Santa Catarina
Phone: +55 47 32764000
info-br@weg.net

CHILE

La Reina - Santiago
Phone: +56 2 27848900
info-cl@weg.net

CHINA

Nantong - Jiangsu
Phone: +86 513 85989333
info-cn@weg.net

Changzhou - Jiangsu
Phone: +86 519 88067692
info-cn@weg.net

Rugao - Jiangsu
Phone: +86 513 80672011
zhuhua@weg.net

COLOMBIA

San Cayetano - Bogota
Phone: +57 1 4160166
info-co@weg.net

Sabaneta - Antioquia
Phone: +57 4 4449277
info-co@weg.net

ECUADOR

El Batan - Quito
Phone: +593 2 5144339
wegecuador@weg.net

FRANCE

Saint-Quentin-Fallavier - Isère
Phone: +33 4 74991135
info-fr@weg.net

GERMANY

Türnich - Kerpen
Phone: +49 2237 92910
info-de@weg.net

Balingen - Baden-Württemberg
Phone: +49 7433 90410
info@weg-antriebe.de

Homburg (Efze) - Hesse
Phone: +49 5681 99520
info@akh-antriebstechnik.de

GHANA

Accra
Phone: +233 30 2766490
ghana@zestweg.com

INDIA

Bangalore - Karnataka
Phone: +91 080 46437450
info-in@weg.net

Hosur - Tamil Nadu
Phone: +91 4344 301577
info-in@weg.net

ITALY

Cinisello Balsamo - Milano
Phone: +39 2 61293535
info-it@weg.net

JAPAN

Yokohama - Kanagawa
Phone: +81 45 5503030
info-jp@weg.net

MALAYSIA

Shah Alam - Selangor
Phone: +60 3 78591626
info@wattdrive.com.my

MEXICO

Huehuetoca - Mexico
Phone: +52 55 53214275
info-mx@weg.net

Tizayuca - Hidalgo
Phone: +52 77 97963790
info-mx@weg.net

NETHERLANDS

Oldenzaal - Overijssel
Phone: +31 541 571080
info-nl@weg.net

PERU

La Victoria - Lima
Phone: +51 1 2097600
info-pe@weg.net

PORTUGAL

Maia - Porto
Phone: +351 22 9477700
info-pt@weg.net

RUSSIA and CIS

Saint Petersburg
Phone: +7 812 363 2172
sales-wes@weg.net

SOUTH AFRICA

Johannesburg
Phone: +27 (0) 11 7236000
info@zestweg.com

Cape Town
Phone: +27 (0) 21 507 7200
gentsets@zestweg.com

Heidelberg
Phone: +27 (0) 16 349 2683/4/5
wta@zestweg.com

SPAIN

Coslada - Madrid
Phone: +34 91 6553008
info-es@weg.net

Valencia
Phone: +34 96 1379296
info@autrial.es

SINGAPORE

Singapore
Phone: +65 68589081
info-sg@weg.net

Singapore
Phone: +65 68622220
info-sg@weg.net

SCANDINAVIA

Mölnlycke - Sweden
Phone: +46 31 888000
info-se@weg.net

UK

Redditch - Worcestershire
Phone: +44 1527 513800
info-uk@weg.net

UNITED ARAB EMIRATES

Jebel Ali - Dubai
Phone: +971 4 8130800
info-ae@weg.net

USA

Duluth - Georgia
Phone: +1 678 2492000
info-us@weg.net

Bluffton - Indiana
Phone: +1 800 5798527
info-us@weg.net

Minneapolis - Minnesota
Phone: +1 612 3788000
info-us@weg.net

Washington - Missouri
Phone: +1 636-239-9300
wegwill@weg.net

VENEZUELA

Valencia - Carabobo
Phone: +58 241 8210582
info-ve@weg.net

For those countries where there is not a WEG own operation, find our local distributor at www.weg.net.



WEG Group - Automation Business Unit
Jaraguá do Sul - SC - Brazil
Phone: +55 47 3276 4000
automacao@weg.net
www.weg.net

