

ATENÇÃO:

- Desconecte da rede elétrica antes de proceder qualquer trabalho neste equipamento.
- Somente profissionais qualificados podem efetuar a instalação e manutenção.
- Obedecer normas nacionais, estaduais, locais e instruções de operação.

WARNING:

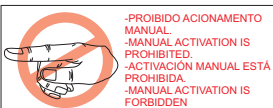
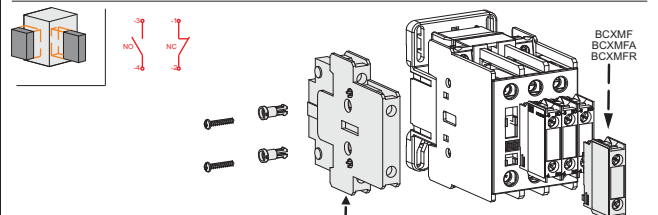
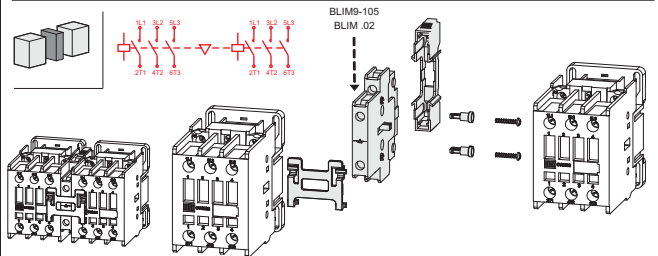
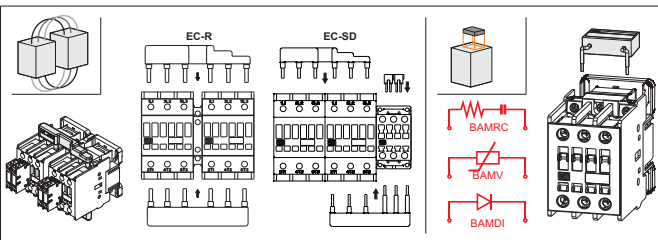
- Installation and maintenance to be performed by authorized personnel only.
- User is cautioned to observe all recommendations, warnings and cautions relating to safety of personnel and equipment as well as general and local health and safety laws, codes and procedures.

ATENCIÓN:

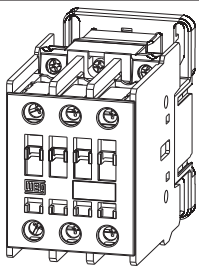
- Desconectar de la red eléctrica antes de hacer cualquier trabajo en este equipamiento.
- Recomendase instalación por profesional calificado.
- Respetar normas nacionales y locales.
- Producto destinado a utilización en instalaciones eléctricas de baja tensión.

WARNING:

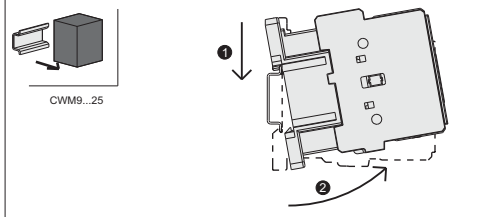
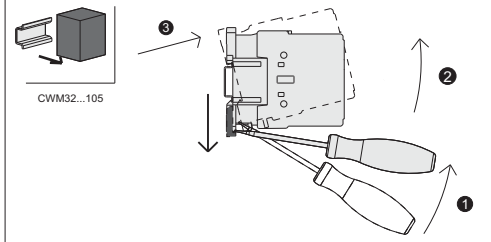
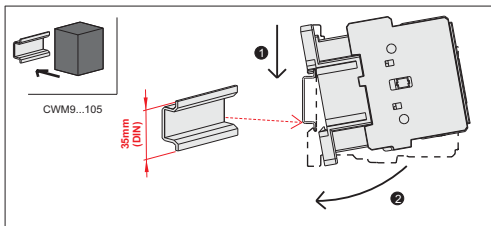
- Bevor irgend eine Arbeit am Gerät vorgenommen wird, muss sichergestellt sein, dass die Einheit stromlos und freigeschaltet ist.
- Sämtliche Arbeiten an der Einheit dürfen daher ausschließlich nur von Fachpersonal vorgenommen werden.
- Die jeweils geltenden nationalen, örtlichen und anlagenspezifischen Bestimmungen und Erfordernisse sind zu berücksichtigen.



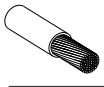
	MAX. CONTATOS MAX. CONTACTS MAX ANZAHL KONTAKTE
CWM9...25	4
CWM32...40	6
CWM50...105	8



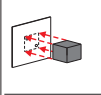
CWM9...105
WEG Automação
www.weg.net
0757.0350.18



GARANTIA / WARRANTY / GARANTÍA / GEWÄHRLEISTUNG:
A WEG oferece garantia limitada contra defeitos de fabricação ou de materiais de seus produtos. Para mais informações acesse nosso site: WEG provides a limited warranty for its products against defects in materials and workmanship. For more information access our site: WEG ofrece garantía limitada contra defectos de fabricación o de materiales de sus productos. Para más informaciones acceda al WEB sitio: WEG bietet eine beschränkte Gewährleistung für ihre Produkte gegen Herstellungs- und Materialfehler. Für weitere Informationen besuchen Sie bitte unsere Webseite: www.weg.net/warranty-automation

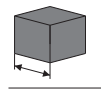


		CWM9...105		
	mm ² (IEC)	1X 0.5...4 2X 0.5...1.5 2X 1...2.5	1X 1...4 2X 1...2.5	1X 0.5...4 2X 0.5...1.5 2X 1...2.5
	AWG (UL)	1X 20...10 2X 20...14 2X 16...12	1X 16...10 2X 16...12	1X 20...10 2X 20...14 2X 16...12
PHILLIPS #2		IEC (N.m)		UL (lb.in)
		0,8 ... 1,1		10

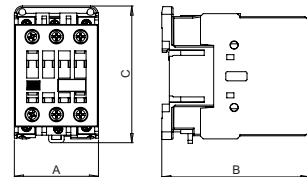


in mm

		CWM9...25	
	A	2.874	73
	B	2.291	58.2
	C	0.394	10
	D	1.378	35
	E	0.181	4.6



in mm

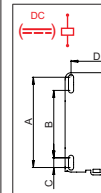


		CWM9...18			CWM25		
	mm ² (IEC)	1X 4 2X 2,5	1X 1...6 2X 1...2,5 2X 2,5...6	1X 0,5...6 2X 0,5...2,5 2X 2,5...6	1X 10 2X 4	1X 2,5...10 2X 2,5...10	1X 1...10 2X 1...2,5 2X 2,5...10
	AWG (UL)	1 or 2 x 14...10			1 or 2 x 14...8		
PHILLIPS #2		IEC (N.m)		UL (lb.in)	IEC (N.m)		UL (lb.in)
		1 ... 1,5		15	1,6 ... 2,5		16

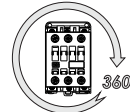
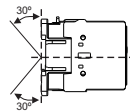
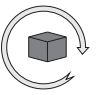
		CWM32...40	
	A	3.110	79
	B	1.969	50
	C	1.772	45
	D	1.673	42.5
	E	0.179	4.5

	CWM9 CWM18 AC CWM18 DC CWM25 AC CWM25 DC	CWM32 CWM40 AC CWM32 CWM40 DC CWM50 AC/DC CWM80 AC/DC CWM95 AC/DC						
A	1.772 45	1.772 45	1.772 45	1.772 45	2.185 55.5	2.165 55	2.60 66	2.97 75.4
B	3.362 85.4	4.547 115.5	3.425 87	4.606 117	3.852 97.9	4.640 117.9	4.53 115	4.97 126.2
C	3.189 81	3.189 81	3.189 81	3.189 81	3.524 89.5	3.524 89.5	4.58 116.3	4.58 116.3

		CWM32...40			CWM50...80			CWM95...105		
	mm ² (IEC)	1...16	1.5...16	1...16	2.5...25	6...35	2.5...35	4...35	6...35	4...35
	AWG (UL)	1 or 2 x 14...8			1 or 2 x 14...1/0			1 or 2 x 10...1/0		
	mm ² (IEC)	0.75...16	1...16	0.75...16	1...25	1.5...35	1...35	1.5...50	2.5...50	1.5...50
	AWG (UL)	1 or 2 x 14...8			1 or 2 x 14...1/0			1 or 2 x 10...1/0		
	mm ² (IEC)	1...16	1.5...16	1...16	2.5...35	6...35	2.5...35	4...35	6...35	4...35
	AWG (UL)	1 or 2 x 14...8			1 or 2 x 14...1/0			1 or 2 x 10...1/0		
	mm ² (IEC)	0.75...16	1...16	0.75...16	1...35	1.5...35	1...35	1.5...50	2.5...50	1.5...50
	AWG (UL)	1 or 2 x 14...8			1 or 2 x 14...1/0			1 or 2 x 10...1/0		
PHILLIPS ALLEN #2 4 mm		IEC (N.m)		UL (lb.in)	IEC (N.m)		UL (lb.in)	IEC (N.m)		UL (lb.in)
		2...2,5		22	4 ... 6		40	5 ... 6,5		60



		CWM50...105	
	A	3.54	90
	B	2.24	57
	C	2.20	56
	D	0.22	5.5
	E	0.24	6



WEG IMPORTERS IN THE EUROPEAN UNION

AUSTRIA - WATT DRIVE ANTRIEBSTECHNIK GMBH - Wöllersdorfer Str. 68, 2753 Markt Piesting, Wiener, Austria; **BELGIUM** - WEG BENELUX S.A. - Rue de l'Industrie 30/D, 1400 Nivelles, Belgium; **FRANCE** - WEG FRANCE SAS - 13 Rue du Morellon, 38297 Saint Quentin Fallavier, France; **GERMANY** - WEG GERMANY GMBH - Geigerstraße 7, 50169 Industriegebiet Tünnich 3, Kerpen, Germany; **ITALY** - WEG ITALIA S.R.L. - Via Viganò de Vizzi, 93/95, 20092 Cinisello Balsamo, Milano, Italy; **NETHERLANDS** - WEG NETHERLANDS - Hanzepoort 23C, 7575 DB Oldenzaan, Netherlands; **PORTUGAL** - WEG EURO-INDUSTRIA ELECTRICA S.A. - R. Eng. Frederico Ulrich 605, 4471-908 Maia, Portugal; **SPAIN** - WEG IBERIA INDUSTRIAL S.L. - C/ Tierra de Barros, 5-7, 28823 Coslada, Madrid, Spain; **SCANDINAVIA** - WEG SCANDINAVIA AB - Box 27, 435 21, 43533 Mölnlycke, Sweden; **UNITED KINGDOM** - WEG (UK) LTD - Broad Ground Road, Redditch B988YP, Worcestershire, United Kingdom.

Information valid for WEG Group Importers.