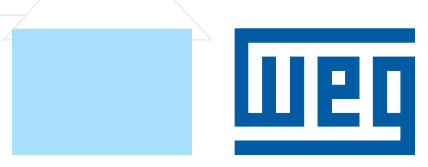
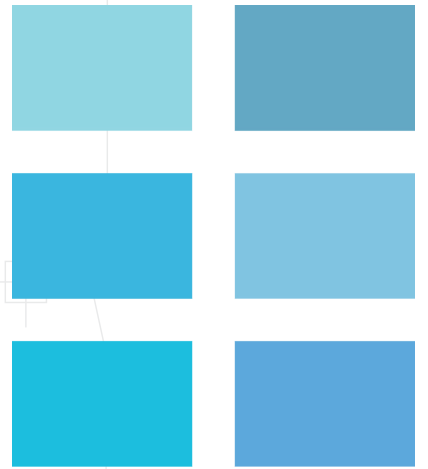
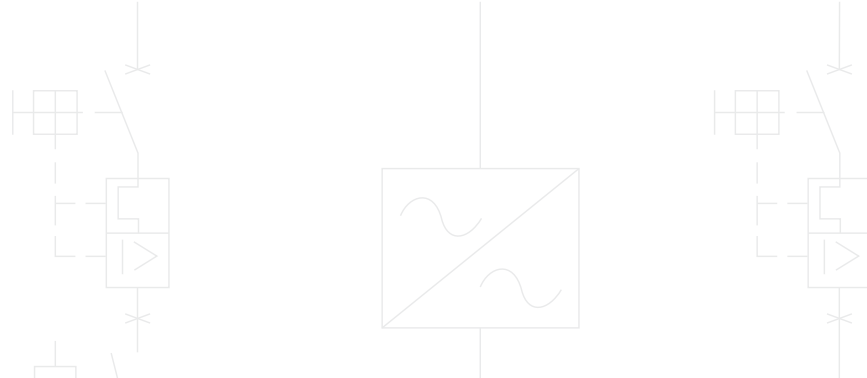


UMBW

Thermal-Magnetic MCB



UMBW-UL489 and UL1077 Listed

Introducing the New WEG UMBW Series Thermal-Magnetic Miniature Circuit Breakers. This new offering includes both UL489 and UL1077 approvals to provide a solution for circuit & equipment protection in Industrial Electrical equipment. The UMBW has a range from 1 to 63Amps, available in 1,2, 3 poles, and B, C, D trip curves.

Standard Features

- AC & DC voltages available in one Series
- UL489 Branch Circuit protective device
- UL1077 Equipment protection
- 17.5mm width per pole
- Visual status indication
- Positive trip-free snap action mechanism to ensure reliable switching
- Cutable Bus Bar connecting system



UMBW Catalog Number Sequence

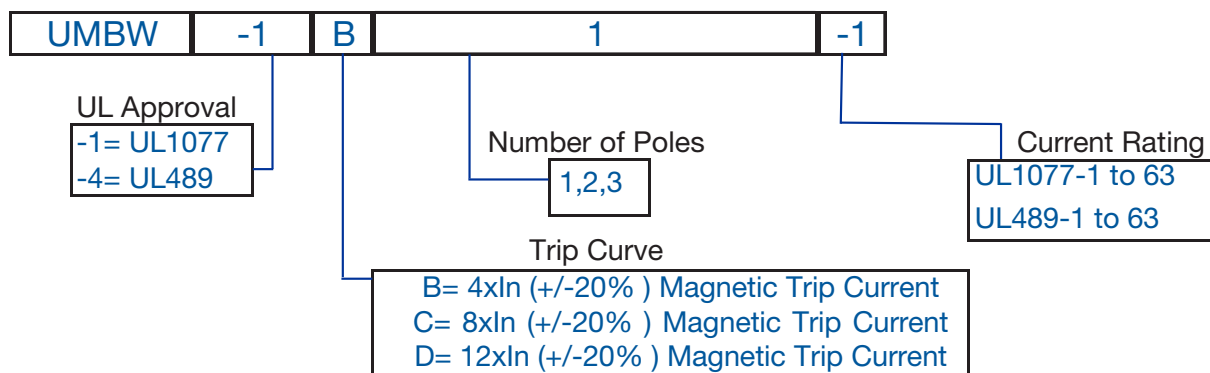


Table intended as reference only and not to create part numbers.

# Poles	Ampacity	Catalog Number			Max Voltage	List Price	Multiplier
		B CURVE	C CURVE	D CURVE			
1 POLE	1	UMBW-1B1-1	UMBW-1C1-1	UMBW-1D1-1	277 VAC	\$25	Z12
	1	UMBW-1B1-1.2	UMBW-1C1-1.2	UMBW-1D1-1.2			
	1.5	UMBW-1B1-1.5 ¹	UMBW-1C1-1.5 ¹	UMBW-1D1-1.5 ¹			
	1.6	UMBW-1B1-1.6	UMBW-1C1-1.6	UMBW-1D1-1.6			
	2	UMBW-1B1-2	UMBW-1C1-2	UMBW-1D1-2			
	3	UMBW-1B1-3	UMBW-1C1-3	UMBW-1D1-3			
	4	UMBW-1B1-4	UMBW-1C1-4	UMBW-1D1-4			
	5	UMBW-1B1-5	UMBW-1C1-5	UMBW-1D1-5			
	6	UMBW-1B1-6	UMBW-1C1-6	UMBW-1D1-6			
	7	UMBW-1B1-7 ¹	UMBW-1C1-7 ¹	UMBW-1D1-7 ¹			
	8	UMBW-1B1-8 ¹	UMBW-1C1-8 ¹	UMBW-1D1-8 ¹			
	10	UMBW-1B1-10	UMBW-1C1-10	UMBW-1D1-10			
	12	UMBW-1B1-12	UMBW-1C1-12	UMBW-1D1-12			
	13	UMBW-1B1-13 ¹	UMBW-1C1-13 ¹	UMBW-1D1-13 ¹			
	15	UMBW-1B1-15	UMBW-1C1-15	UMBW-1D1-15			
	16	UMBW-1B1-16	UMBW-1C1-16	UMBW-1D1-16			
	20	UMBW-1B1-20	UMBW-1C1-20	UMBW-1D1-20			
	25	UMBW-1B1-25	UMBW-1C1-25	UMBW-1D1-25			
	30	UMBW-1B1-30 ¹	UMBW-1C1-30 ¹	UMBW-1D1-30 ¹			
	32	UMBW-1B1-32	UMBW-1C1-32	UMBW-1D1-32			
	35	UMBW-1B1-35 ¹	UMBW-1C1-35 ¹	UMBW-1D1-35 ¹			
40	UMBW-1B1-40	UMBW-1C1-40	UMBW-1D1-40				
50	UMBW-1B1-50	UMBW-1C1-50	UMBW-1D1-50				
60	UMBW-1B1-60 ¹	UMBW-1C1-60 ¹	UMBW-1D1-60 ¹				
63	UMBW-1B1-63	UMBW-1C1-63	UMBW-1D1-63				
2 POLE	1	UMBW-1B2-1	UMBW-1C2-1	UMBW-1D2-1	277/480 VAC	\$48	Z12
	1.2	UMBW-1B2-1.2	UMBW-1C2-1.2	UMBW-1D2-1.2			
	1.5	UMBW-1B2-1.5	UMBW-1C2-1.5	UMBW-1D2-1.5			
	1.6	UMBW-1B2-1.6	UMBW-1C2-1.6	UMBW-1D2-1.6			
	2	UMBW-1B2-2	UMBW-1C2-2	UMBW-1D2-2			
	3	UMBW-1B2-3	UMBW-1C2-3	UMBW-1D2-3			
	4	UMBW-1B2-4	UMBW-1C2-4	UMBW-1D2-4			
	5	UMBW-1B2-5	UMBW-1C2-5	UMBW-1D2-5			
	6	UMBW-1B2-6	UMBW-1C2-6	UMBW-1D2-6			
	7	UMBW-1B2-7 ¹	UMBW-1C2-7 ¹	UMBW-1D2-7 ¹			
	8	UMBW-1B2-8 ¹	UMBW-1C2-8 ¹	UMBW-1D2-8 ¹			
	10	UMBW-1B2-10	UMBW-1C2-10	UMBW-1D2-10			
	12	UMBW-1B2-12	UMBW-1C2-12	UMBW-1D2-12			
	13	UMBW-1B2-13 ¹	UMBW-1C2-13 ¹	UMBW-1D2-13 ¹			
	15	UMBW-1B2-15 ¹	UMBW-1C2-15 ¹	UMBW-1D2-15 ¹			
	16	UMBW-1B2-16	UMBW-1C2-16	UMBW-1D2-16			
	20	UMBW-1B2-20	UMBW-1C2-20	UMBW-1D2-20			
	25	UMBW-1B2-25	UMBW-1C2-25	UMBW-1D2-25			
	30	UMBW-1B2-30 ¹	UMBW-1C2-30 ¹	UMBW-1D2-30 ¹			
	32	UMBW-1B2-32	UMBW-1C2-32	UMBW-1D2-32			
	35	UMBW-1B2-35 ¹	UMBW-1C2-35 ¹	UMBW-1D2-35 ¹			
40	UMBW-1B2-40	UMBW-1C2-40	UMBW-1D2-40				
50	UMBW-1B2-50	UMBW-1C2-50	UMBW-1D2-50				
60	UMBW-1B2-60 ¹	UMBW-1C2-60 ¹	UMBW-1D2-60 ¹				
63	UMBW-1B2-63	UMBW-1C2-63	UMBW-1D2-63				





UMBW


# Poles	Ampacity	Catalog Number			Max Voltage	List Price	Multiplier
		B CURVE	C CURVE	D CURVE			
3 POLE	1	UMBW-1B3-1	UMBW-1C3-1	UMBW-1D3-1	277/480 VAC	\$65	Z12
	1.2	UMBW-1B3-1.2	UMBW-1C3-1.2	UMBW-1D3-1.2			
	1.5	UMBW-1B3-1.5 ¹	UMBW-1C3-1.5 ¹	UMBW-1D3-1.5 ¹			
	1.6	UMBW-1B3-1.6	UMBW-1C3-1.6	UMBW-1C3-1.6			
	2	UMBW-1B3-2	UMBW-1C3-2	UMBW-1D3-2			
	3	UMBW-1B3-3 ¹	UMBW-1C3-3 ¹	UMBW-1D3-3 ¹			
	4	UMBW-1B3-4	UMBW-1C3-4	UMBW-1D3-4			
	5	UMBW-1B3-5 ¹	UMBW-1C3-5 ¹	UMBW-1D3-5 ¹			
	6	UMBW-1B3-6	UMBW-1C3-6	UMBW-1D3-6			
	7	UMBW-1B3-7 ¹	UMBW-1C3-7 ¹	UMBW-1D3-7 ¹			
	8	UMBW-1B3-8 ¹	UMBW-1C3-8 ¹	UMBW-1D3-8 ¹			
	10	UMBW-1B3-10	UMBW-1C3-10	UMBW-1D3-10			
	12	UMBW-1B3-12 ¹	UMBW-1C3-12 ¹	UMBW-1D3-12 ¹			
	13	UMBW-1B3-13 ¹	UMBW-1C3-13 ¹	UMBW-1D3-13 ¹			
	15	UMBW-1B3-15 ¹	UMBW-1C3-15 ¹	UMBW-1D3-15 ¹			
	16	UMBW-1B3-16	UMBW-1C3-16	UMBW-1D3-16			
	20	UMBW-1B3-20	UMBW-1C3-20	UMBW-1D3-20			
	25	UMBW-1B3-25	UMBW-1C3-25	UMBW-1D3-25			
	30	UMBW-1B3-30 ¹	UMBW-1C3-30 ¹	UMBW-1D3-30 ¹			
	32	UMBW-1B3-32	UMBW-1C3-32	UMBW-1D3-32			
35	UMBW-1B3-35 ¹	UMBW-1C3-35 ¹	UMBW-1D3-35 ¹				
40	UMBW-1B3-40	UMBW-1C3-40	UMBW-1D3-40				
50	UMBW-1B3-50	UMBW-1C3-50	UMBW-1D3-50				
60	UMBW-1B3-60 ¹	UMBW-1C3-60 ¹	UMBW-1D3-60 ¹				
63	UMBW-1B3-63	UMBW-1C3-63	UMBW-1D3-63				



1) Non-stocked. Contact WEG for availability.

# Poles	Ampacity	Catalog Number			Max Voltage	List Price	Multiplier				
		B CURVE	C CURVE	D CURVE							
1 POLE 	1	UMBW-4B1-1	UMBW-4C1-1	UMBW-4D1-1	277 VAC /60 VDC	\$53	Z12				
	1.2	UMBW-4B1-1.2	UMBW-4C1-1.2	UMBW-4D1-1.2							
	1.5	UMBW-4B1-1.5 ¹	UMBW-4C1-1.5 ¹	UMBW-4D1-1.5 ¹							
	1.6	UMBW-4B1-1.6	UMBW-4C1-1.6	UMBW-4D1-1.6							
	2	UMBW-4B1-2	UMBW-4C1-2	UMBW-4D1-2							
	3	UMBW-4B1-3 ¹	UMBW-4C1-3 ¹	UMBW-4D1-3 ¹							
	4	UMBW-4B1-4	UMBW-4C1-4	UMBW-4D1-4							
	5	UMBW-4B1-5 ¹	UMBW-4C1-5 ¹	UMBW-4D1-5 ¹							
	6	UMBW-4B1-6	UMBW-4C1-6	UMBW-4D1-6							
	7	UMBW-4B1-7 ¹	UMBW-4C1-7 ¹	UMBW-4D1-7 ¹							
	8	UMBW-4B1-8 ¹	UMBW-4C1-8 ¹	UMBW-4D1-8 ¹							
	10	UMBW-4B1-10	UMBW-4C1-10	UMBW-4D1-10							
	12	UMBW-4B1-12 ¹	UMBW-4C1-12 ¹	UMBW-4D1-12 ¹							
	13	UMBW-4B1-13 ¹	UMBW-4C1-13 ¹	UMBW-4D1-13 ¹							
	15	UMBW-4B1-15	UMBW-4C1-15	UMBW-4D1-15							
	16	UMBW-4B1-16	UMBW-4C1-16	UMBW-4D1-16							
	20	UMBW-4B1-20	UMBW-4C1-20	UMBW-4D1-20							
	25	UMBW-4B1-25	UMBW-4C1-25	UMBW-4D1-25							
	2 POLE 	30	UMBW-4B1-30 ¹	UMBW-4C1-30 ¹	UMBW-4D1-30 ¹	120 VAC /60 VDC	\$53	Z12			
		32	UMBW-4B1-32	UMBW-4C1-32	UMBW-4D1-32						
35		UMBW-4B1-35 ¹	UMBW-4C1-35 ¹	UMBW-4D1-35 ¹							
40		UMBW-4B1-40 ¹	UMBW-4C1-40 ¹	UMBW-4D1-40 ¹							
50		UMBW-4B1-50 ¹	UMBW-4C1-50 ¹	UMBW-4D1-50 ¹							
60		UMBW-4B1-60 ¹	UMBW-4C1-60 ¹	UMBW-4D1-60 ¹							
63		UMBW-4B1-63 ¹	UMBW-4C1-63 ¹	UMBW-4D1-63 ¹							
2 POLE		1	UMBW-4B2-1	UMBW-4C2-1	UMBW-4D2-1				277/480 VAC 125 VDC	\$107	Z12
		1.2	UMBW-4B2-1.2	UMBW-4C2-1.2	UMBW-4D2-1.2						
		1.5	UMBW-4B2-1.5 ¹	UMBW-4C2-1.5 ¹	UMBW-4D2-1.5 ¹						
		1.6	UMBW-4B2-1.6	UMBW-4C2-1.6	UMBW-4D2-1.6						
		2	UMBW-4B2-2	UMBW-4C2-2	UMBW-4D2-2						
		3	UMBW-4B2-3 ¹	UMBW-4C2-3 ¹	UMBW-4D2-3 ¹						
	4	UMBW-4B2-4	UMBW-4C2-4	UMBW-4D2-4							
	5	UMBW-4B2-5	UMBW-4C2-5	UMBW-4D2-5							
	6	UMBW-4B2-6	UMBW-4C2-6	UMBW-4D2-6							
	7	UMBW-4B2-7 ¹	UMBW-4C2-7 ¹	UMBW-4D2-7 ¹							
	8	UMBW-4B2-8 ¹	UMBW-4C2-8 ¹	UMBW-4D2-8 ¹							
	10	UMBW-4B2-10	UMBW-4C2-10	UMBW-4D2-10							
	12	UMBW-4B2-12	UMBW-4C2-12	UMBW-4D2-12							
	13	UMBW-4B2-13 ¹	UMBW-4C2-13 ¹	UMBW-4D2-13 ¹							
	15	UMBW-4B2-15 ¹	UMBW-4C2-15 ¹	UMBW-4D2-15 ¹							
	16	UMBW-4B2-16	UMBW-4C2-16	UMBW-4D2-16							
	20	UMBW-4B2-20	UMBW-4C2-20	UMBW-4D2-20							
	25	UMBW-4B2-25	UMBW-4C2-25	UMBW-4D2-25							
	2 POLE	30	UMBW-4B2-30 ¹	UMBW-4C2-30 ¹	UMBW-4D2-30 ¹	277/480 VAC 125 VDC	\$107	Z12			
		32	UMBW-4B2-32	UMBW-4C2-32	UMBW-4D2-32						
35		UMBW-4B2-35 ¹	UMBW-4C2-35 ¹	UMBW-4D2-35 ¹							
40		UMBW-4B2-40 ¹	UMBW-4C2-40 ¹	UMBW-4D2-40 ¹							
50		UMBW-4B2-50 ¹	UMBW-4C2-50 ¹	UMBW-4D2-50 ¹							
60		UMBW-4B2-60 ¹	UMBW-4C2-60 ¹	UMBW-4D2-60 ¹							
63		UMBW-4B2-63 ¹	UMBW-4C2-63 ¹	UMBW-4D2-63 ¹							

UMBW

# Poles	Ampacity	Catalog Number			Max Voltage	List Price	Multiplier
		B CURVE	C CURVE	D CURVE			
 3 POLE	1	UMBW-4B3-1	UMBW-4C3-1	UMBW-4D3-1	277/480 VAC 125 VDC	\$158	Z12
	1.2	UMBW-4B3-1.2	UMBW-4C3-1.2	UMBW-4D3-1.2			
	1.5	UMBW-4B3-1.5 ¹	UMBW-4C3-1.5 ¹	UMBW-4D3-1.5 ¹			
	1.6		UMBW-4C3-1.6	UMBW-4D3-1.6			
	2	UMBW-4B3-2	UMBW-4C3-2	UMBW-4D3-2			
	3	UMBW-4B3-3 ¹	UMBW-4C3-3 ¹	UMBW-4D3-3 ¹			
	4	UMBW-4B3-4	UMBW-4C3-4	UMBW-4D3-4			
	5	UMBW-4B3-5	UMBW-4C3-5	UMBW-4D3-5			
	6	UMBW-4B3-6	UMBW-4C3-6	UMBW-4D3-6			
	7	UMBW-4B3-7 ¹	UMBW-4C3-7 ¹	UMBW-4D3-7 ¹			
	8	UMBW-4B3-8 ¹	UMBW-4C3-8	UMBW-4D3-8			
	10	UMBW-4B3-10	UMBW-4C3-10	UMBW-4D3-10			
	12	UMBW-4B3-12 ¹	UMBW-4C3-12 ¹	UMBW-4D3-12 ¹			
	13	UMBW-4B3-13 ¹	UMBW-4C3-13 ¹	UMBW-4D3-13 ¹			
	15	UMBW-4B3-15	UMBW-4C3-15	UMBW-4D3-15			
	16	UMBW-4B3-16	UMBW-4C3-16	UMBW-4D3-16			
	20	UMBW-4B3-20	UMBW-4C3-20	UMBW-4D3-20			
	25	UMBW-4B3-25	UMBW-4C3-25	UMBW-4D3-25			
	30	UMBW-4B3-30 ¹	UMBW-4C3-30 ¹	UMBW-4D3-30 ¹			
	32	UMBW-4B3-32	UMBW-4C3-32	UMBW-4D3-32			
35	UMBW-4B3-35 ¹	UMBW-4C3-35 ¹	UMBW-4D3-35 ¹				
40	UMBW-4B3-40 ¹	UMBW-4C3-40 ¹	UMBW-4D3-40 ¹				
50	UMBW-4B3-50 ¹	UMBW-4C3-50 ¹	UMBW-4D3-50 ¹				
60	UMBW-4B3-60 ¹	UMBW-4C3-60 ¹	UMBW-4D3-60 ¹				
63	UMBW-4B3-63 ¹	UMBW-4C3-63 ¹	UMBW-4D3-63 ¹	240 VAC / 125 VDC	\$158	Z12	

1) Non-stocked. Contact WEG for availability.

Breaker Technical Data

Electrical Ratings

Approval	Poles	Voltage	Ampacity	Interrupting
UL1077 E468808	1 Pole	240VAC	1A - 63A	7.5kA
	1 Pole	277VAC	1A - 63A	5kA
	2,3 Pole	240VAC	1A - 63A	5kA
	2, 3 Pole	277/480Y VAC	1A - 63A	5kA
	1 Pole	60VDC - pending	1A - 63A	7.5kA
	2 Pole	125VDC - pending	1A - 63A	7.5kA
UL489 E468810	1 Pole	120VAC	1A - 63A	10kA
	2, 3 Pole	240VAC	1A - 63A	10kA
	1 Pole	277VAC	1A - 20A	10kA
	2, 3 Pole	277/480Y VAC	1A - 20A	10kA
	1 Pole	60VDC	1A - 63A	10kA
	2 Pole	125VDC	1A - 63A	10kA
IEC 60947-2	1 Pole	230VAC	1A - 63A	10kA
	2, 3 Pole	400VAC	1A - 63A	10kA

Mechanical Ratings

Tripping Curves	B,C,D
Number of Poles	1,2,3
Mounting Position	Vertical, Horizontal
Torque	2 Nm, 1.48 ft lbs Maximum
Cable Cross Section	35mm sq, 2 Awg Maximum
Ambient Temperature	-35 deg C to +70 deg C
Mass	UL1077 - 116 grams per pole UL489 - 131 grams per pole
Protection Class	IP20
Mechanical Operations	10,000
Vibration (sinusoidal)	+ - .38mm (10-57HZ), 5g
Test to IEC 60060-2-6	(57-500HZ)
Test to Fc	10 frequency cycles per axis
Shock Test to IEC60068-2-27, Test Ea	30g (11ms)
Corrosion Test to IEC60068-2-11 Test Ka	96hrs in 5% salt mist
Humidity Test to IEC60068-2-78 Test Cab	48hrs at 95% RH, Temp +40 deg C
Terminals	Screw with Bus Bar Connections

Accessories

Auxiliary Contact	1NO/1NC
Shunt Trip	120,240,277AC...12,24,48,125DC
Bell Alarm	1NO/1NC
Bus Bar	1,2,3 Phase...1,2,3 Phase with Auxiliary

UMBW

Miniature Circuit Breakers

Accessories & Technical Data

Auxiliary Contacts- Signaling contacts that open and close with the breaker. Provide remote status indicatin ON and OFF only.

For Use With	Catalog Number	Operating Voltage	Operating Amperage	Contacts	Mounting/Dims (mm)	Mechanical Operations	Torque	Mass	QTY	List Price	Multiplier
UMBW-1 UMBW-4	UMBW-AUX	12-240VAC	6A	1NO/1NC	Field Mountable..Left Side/ 9mm	20,000	1 Nm .74 Ft. lbs.	29g	1	\$55	Z12
		277VAC	3A								
		12-24VDC	6A								
		48VDC	3A								
		110-220VDC	1.5A								

Bell Alarm- Provides provisions for visual and alarm indication when the breaker in the Tripped status, due to Short Circuit, Overload or Undervoltage. Breaker must be re-set to open contacts.

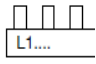
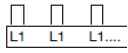
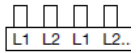
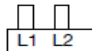
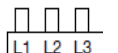
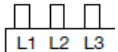
For Use With	Catalog Number	Operating Voltage	Operating Amperage	Contacts	Mounting/Dims (mm)	Mechanical Operations	Torque	Mass	QTY	List Price	Multiplier
UMBW-1 UMBW-4	UMBW-BAC	12-240VAC	6A	1NO/1NC	Field Mountable..Left Side/ 9mm	10,000	1 Nm .74 Ft. lbs.	29g	1	\$68	Z12
		277VAC	3A								
		12-24VDC	6A								
		48VDC	3A								
		110-220VDC	1.5A								

Shunt Trip- Provides ability to trip breaker from remote location when power is applied.

For Use With	Catalog Number	Voltage/Min Trip Voltage	Amperage/ Power Consumption	Contacts	Mounting/Dims (mm)	Mechanical Operations	Torque	Mass	QTY	List Price	Multiplier
UMBW-1 UMBW-4	UMBW-ST12DC	12 VDC/ 8VDC	6A/ 200W	1NO/1NC	Field Mountable..Left Side/18mm	20,000	1Nm, .74ft lbs	60g	1	\$95	Z12
	UMBW-ST24DC	24 VDC/ 16VDC	6A/ 200W							\$95	
	UMBW-ST48DC	48 VDC/ 24VDC	2A/ 200W							\$95	
	UMBW-ST125DC	125 VDC/ 80VDC	1.5A/ 200W							\$95	
	UMBW-ST120AC	120 VAC/ 80VAC	6A/ 200W							\$95	
	UMBW-ST240AC	240 VAC/ 160VAC	6A/ 200W							\$95	
	UMBW-ST277AC	277 VAC/ 160VAC	3A/ 200W							\$95	

Miniature Circuit Breakers

Bus Bar Accessories

For Use With	Catalog Number	AMP Rating End/Center	Number of Poles	Max Voltage	Length (mm)	QTY	List Price	End Cap Catalog Number (Sold as Separate Item)	QTY	List Price	Multiplier
1 Pole											
UMBW-1	UMBW-BB-1-1 	80A/160A	57	600 AC /1000 DC	1009	1	\$125	UMBW-BB-1-1P-END CAP	10 (Sets of 2pcs)	\$30.00	Z12
UMBW-4	UMBW-BB-4-1	80A/160A	57	1000 AC/DC	1031	1	\$500	UMBW-BB-4-END CAP	10	\$35.00	
1 Pole with Auxiliary											
UMBW-1	UMBW-BB-1-1A 	80A/160A	37	600 AC /1000 DC	985	1	\$135	UMBW-BB-1-1P-END CAP	10 (Sets of 2pcs)	\$30.00	Z12
UMBW-4	UMBW-BB-4-1A	80A/160A	37	1000 AC/DC	972	1	\$570	UMBW-BB-4-END CAP	10	\$35.00	
2 POLE											
UMBW-1	UMBW-BB-1-2 	80A/160A	56	600 AC/DC	991	1	\$285	UMBW-BB-1-2/3P-E CAP	10 (Sets of 2pcs)	\$30.00	Z12
UMBW-4	UMBW-BB-4-2	80A/160A	56	600 AC/DC	979	1	\$575	UMBW-BB-4-END CAP	10	\$35.00	
2 Pole with Auxiliary											
UMBW-1	UMBW-BB-1-2A 	80A/160A	46	600 AC/DC	1009	1	\$295.00	UMBW-BB-1-2/3P-E CAP	10 (Sets of 2pcs)	\$30.00	Z12
UMBW-4	UMBW-BB-4-2A	80A/160A	46	600 AC/DC	981	1	\$645.00	UMBW-BB-4-END CAP	10	\$35.00	
3 Pole											
UMBW-1	UMBW-BB-1-3 	80A/160A	57	600 AC/DC	1009	1	\$340.00	UMBW-BB-1-2/3P-E CAP	10 (Sets of 2pcs)	\$30.00	Z12
UMBW-4	UMBW-BB-4-3	80A/160A	57	600 AC/DC	997	1	\$650.00	UMBW-BB-4-END CAP	10	\$35.00	
3 Pole with Auxiliary											
UMBW-1	UMBW-BB-1-3A 	80A/160A	48	600 AC/DC	982	1	\$345.00	UMBW-BB-1-2/3P-E CAP	10 (Sets of 2pcs)	\$30.00	Z12
UMBW-4	UMBW-BB-4-3A	80A/160A		600 AC/DC	936	1	\$720.00	UMBW-BB-4-END CAP	10	\$35.00	

Note: Bus Bars May Be Center Fed to to Increase Ampacity to Double Rated Value

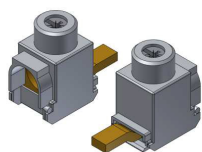
UMBW

Miniature Circuit Breakers

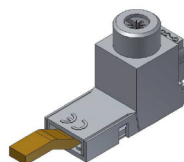
Bus Bar Accessories

For Use With	Catalog Number	AMP Rating	Number of Poles	Max Voltage	Conductor Range Min/Max	Tightening Torque	QTY	List Price	Multiplier
UMBW-1	UMBW-BB-1-1P-END CAP	N/A	1	N/A	N/A	N/A	10	\$30.00	Z12
UMBW-1	UMBW-BB-1-2/3-P-CAP	N/A	2 or 3	N/A	N/A	N/A	10 (Sets of 2pcs)	\$35.00	Z12
UMBW-1	UMBW-BB-1-1P-TERM	115A	1	1000 AC/DC	10AWG/1AWG	50 lb.in	10	\$320.00	Z12
UMBW-1	UMBW-BB-1-2/3P-TERM	115A	2 or 3	1000 AC/DC	10AWG/1AWG	50 lb.in	10	\$330.00	Z12
UMBW-1	UMBW-BB-1-BUS CAP-Y	N/A	5	N/A	N/A	N/A	10 (Sets of 5pcs)	\$115.00	Z12

For Use With	Catalog Number	AMP Rating	Number of Poles	Max Voltage	Conductor Range Min/Max	Tightening Torque	QTY	List Price	Multiplier
UMBW-4	UMBW-BB-4-END CAP	N/A		N/A	N/A	N/A	10	\$40.00	Z12
UMBW-4	UMBW-BB-4-1P-TERM	115A	1	1000 AC/DC	14AWG/2AWG	50 lb.in	10	\$350.00	Z12
UMBW-4	UMBW-BB-4-BUS CAP-Y	N/A	3	N/A	N/A	N/A	10 (Sets of 3pcs)	\$45.00	Z12



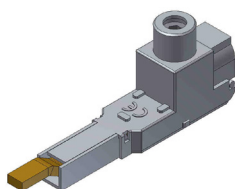
UMBW-BB-1-1-TERM



UMBW-BB-1-2/3P-TERM



UMBW-BB-1-BUS CAP-Y



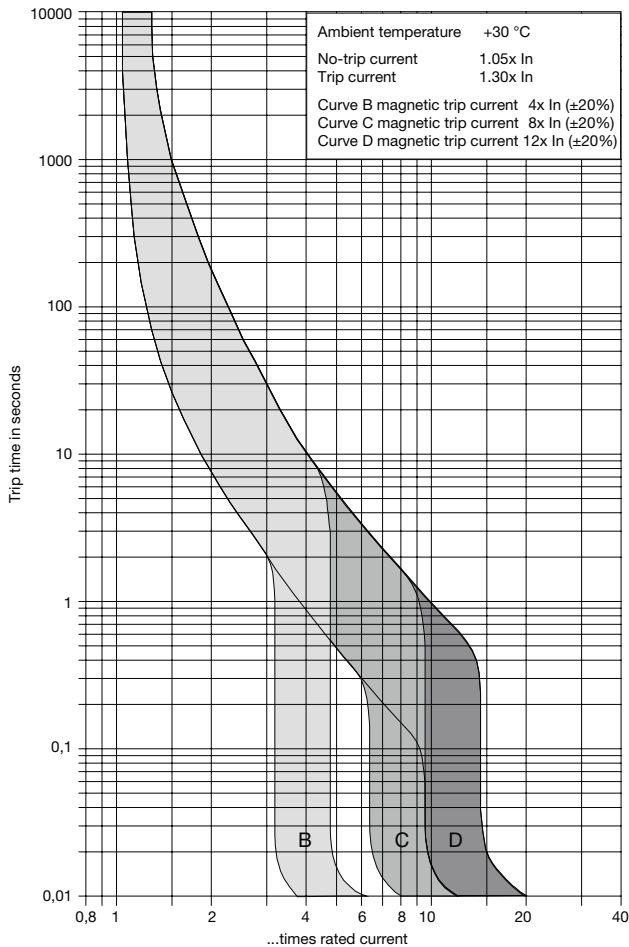
UMBW-BB-4-1P-TERM



UMBW-BB-4-BUS CAP-Y

Operating Ampacity Based on Ambient Temperature (Degree C)

Amps	-35	-30	-25	-20	-15	-10	-5	0	+5	+10	+15	+20	+25	+30	+35	+40	+45	+50	+55	+60	+65	+70
1	1.3	1.3	1.2	1.2	1.2	1.2	1.2	1.1	1.1	1.1	1.1	1.1	1.0	1.0	1.0	0.9	0.9	0.9	0.9	0.8	0.8	0.8
2	2.5	2.5	2.5	2.4	2.4	2.3	2.3	2.3	2.2	2.2	2.1	2.1	2.0	2.0	1.9	1.9	1.8	1.8	1.7	1.7	1.6	1.5
4	5.1	5.0	4.9	4.8	4.8	4.7	4.6	4.5	4.4	4.3	4.2	4.2	4.1	4.0	3.9	3.8	3.6	3.6	3.4	3.3	3.2	3.1
6	7.7	7.6	7.5	7.3	7.2	7.1	7.0	6.8	6.7	6.6	6.4	6.3	6.1	6.0	5.8	5.7	5.5	5.4	5.2	5.0	4.8	4.6
10	13.9	13.6	13.4	13.1	12.8	12.5	12.2	11.9	11.6	11.3	11.0	10.7	10.3	10.0	9.6	9.2	8.9	8.5	8.0	7.6	7.1	6.6
16	20.8	20.4	20.1	19.8	19.4	19.1	18.7	18.3	18.0	17.6	17.2	16.8	16.4	16.0	15.6	15.1	14.7	14.2	13.7	13.2	12.7	12.8
20	25.7	25.3	24.9	24.5	24.1	23.6	23.2	22.8	22.3	21.9	21.4	21.0	20.5	20.0	19.5	19.0	18.4	17.9	17.3	16.7	16.1	15.5
25	32.2	31.7	31.2	30.7	30.2	29.7	29.1	28.6	28.0	27.4	26.8	26.2	25.6	25.0	24.3	23.7	23.0	22.3	21.6	20.8	20.0	19.2
32	41.0	40.5	39.8	39.2	38.5	37.8	37.2	36.5	35.8	35.0	34.3	33.5	32.8	32.0	31.2	30.3	29.5	28.7	27.7	26.8	25.8	24.8
40	51.6	50.9	50.0	40.2	48.4	47.5	46.6	45.7	44.8	43.9	43.0	42.0	41.0	40.0	38.9	37.9	36.8	35.6	34.4	33.2	32.0	30.6
50	64.9	64.0	62.9	61.9	60.8	59.7	58.5	57.4	56.2	55.1	53.8	52.6	51.3	50.0	47.8	46.2	44.8	43.3	41.8	40.2	38.6	35.8
63	83.5	82.1	80.6	79.2	77.7	76.2	74.7	73.1	71.5	69.9	68.2	66.5	64.8	63.0	60.1	58.2	56.2	54.2	52.0	49.8	47.5	43.1



Magnetic tripping currents are increased by 30 % on DC supplies.

B CURVE- Tripping Characteristics:

Calibrated for resistive or non/low inductive loads.
 Applications: Lighting, Control Circuits

C CURVE- Tripping Characteristics:

Calibrated for general purpose inductive loads.
 Applications: Fluorecent lighting, midrange inductive motors

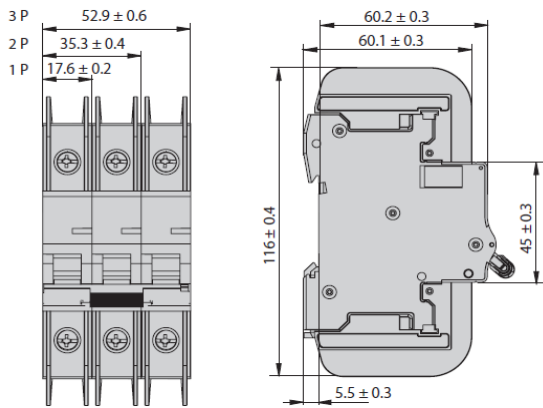
D CURVE- Tripping Characteristics:

Calibrated for inductive loads with high inrush currents
 Applications: Motors, Transformers

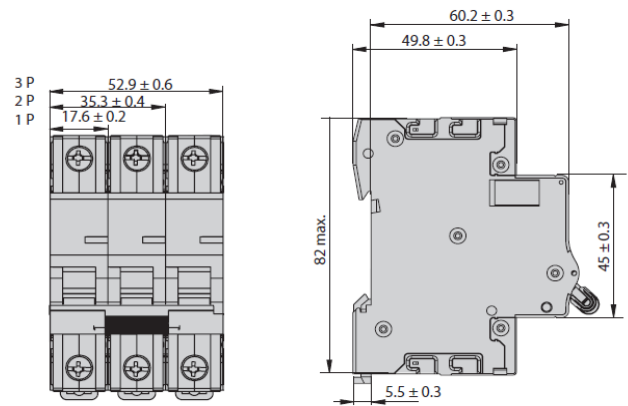
UMBW

Dimensions

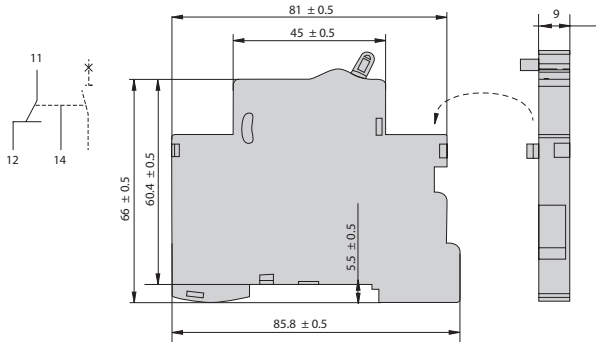
UMBW - 4 (UL489)



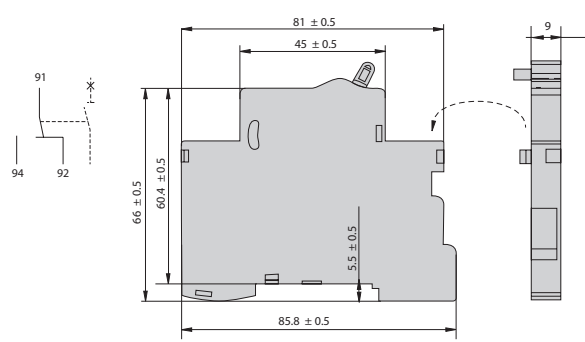
UMBW - 1 (UL1077)



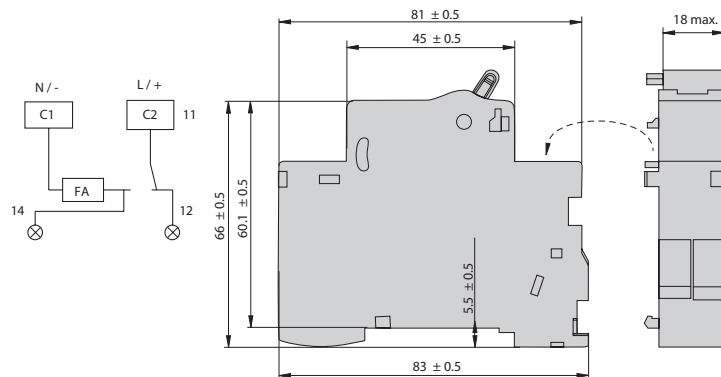
UMBW - AUX



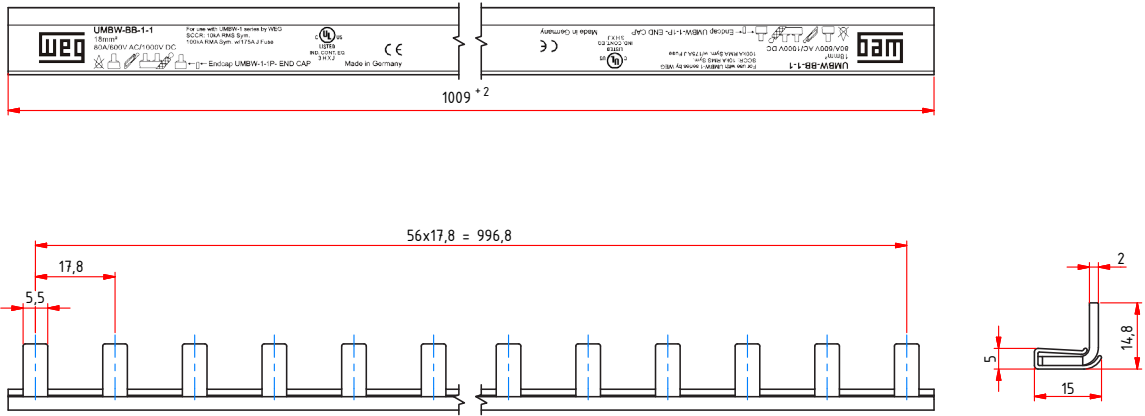
UMBW - BAC



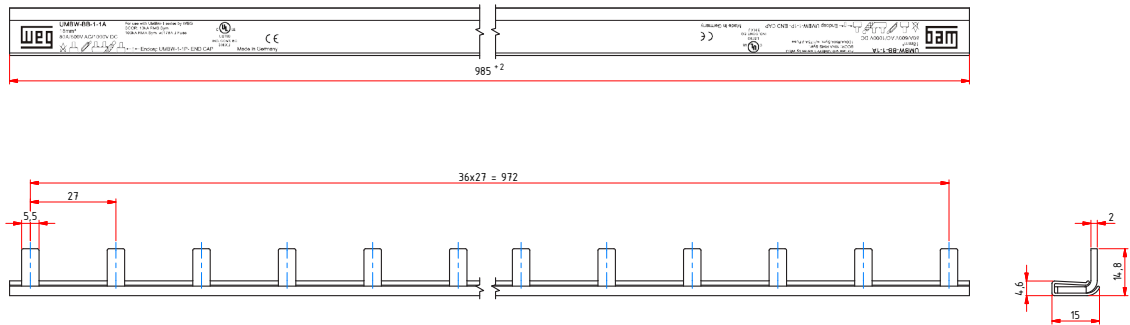
UMBW - AUX



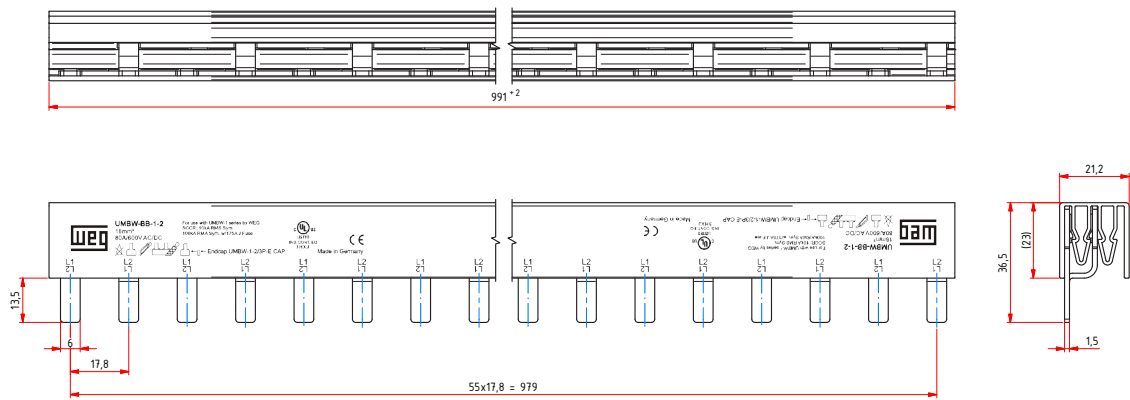
UMBW-BB-1-1



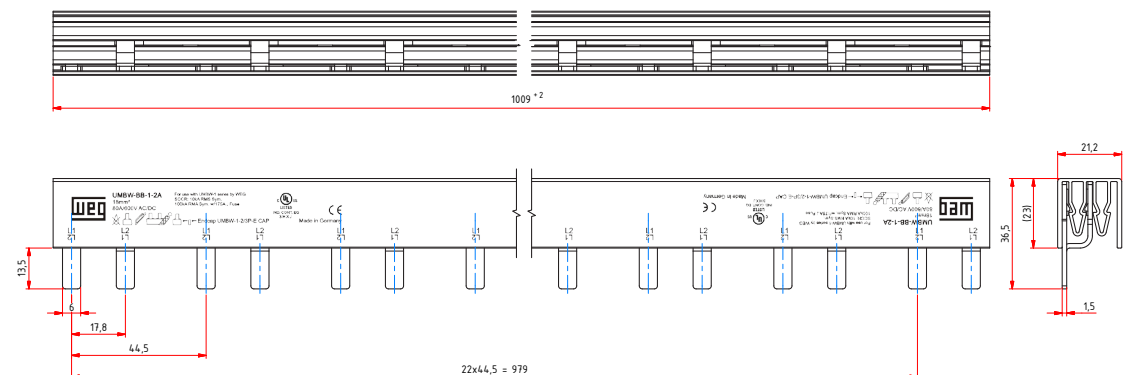
UMBW-BB-1-1A



UMBW-BB-1-2

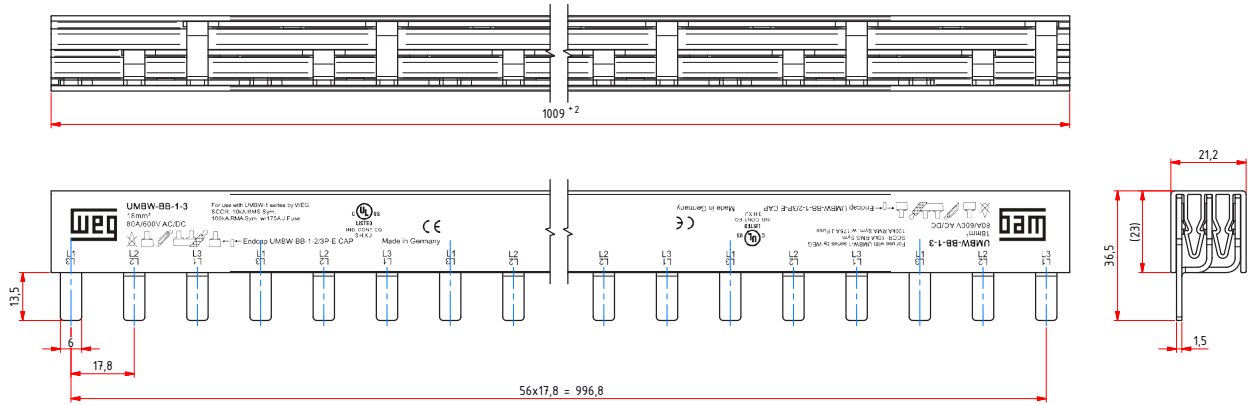


UMBW-BB-1-2A

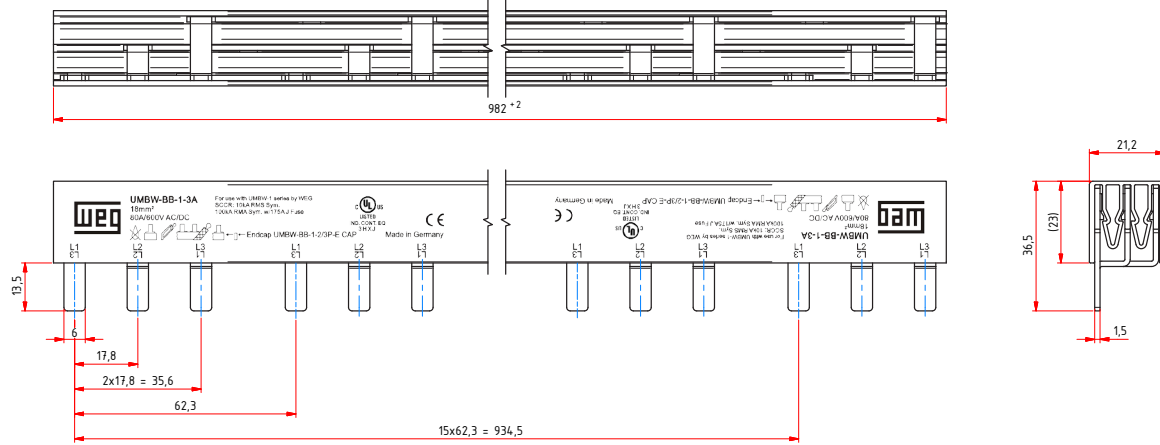


UMBW

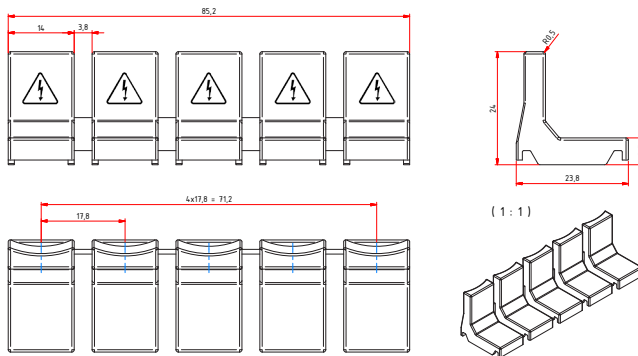
UMBW-BB-1-3



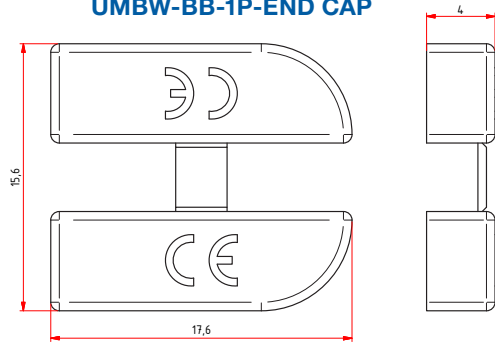
UMBW-BB-1-3A



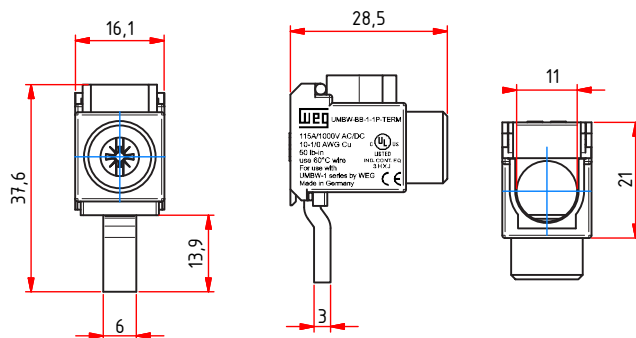
UMBW-BB-1-BUS CAP-Y



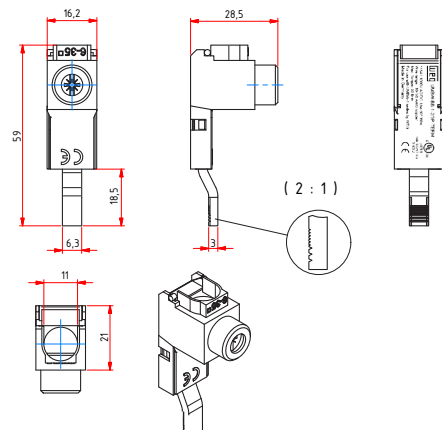
UMBW-BB-1P-END CAP



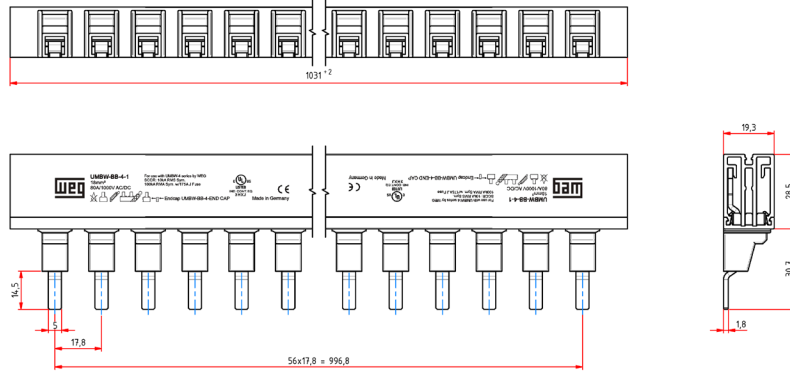
UMBW-BB-1-1P-TERM



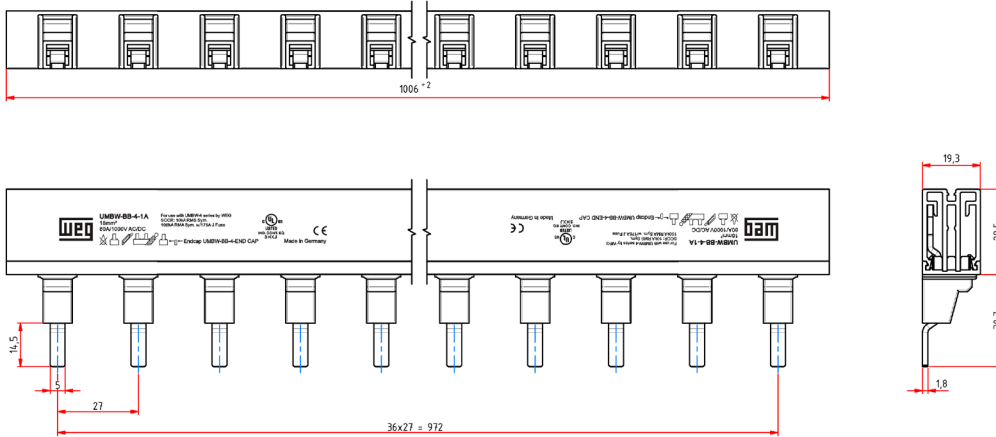
UMBW-BB-1-2/3P-TERM



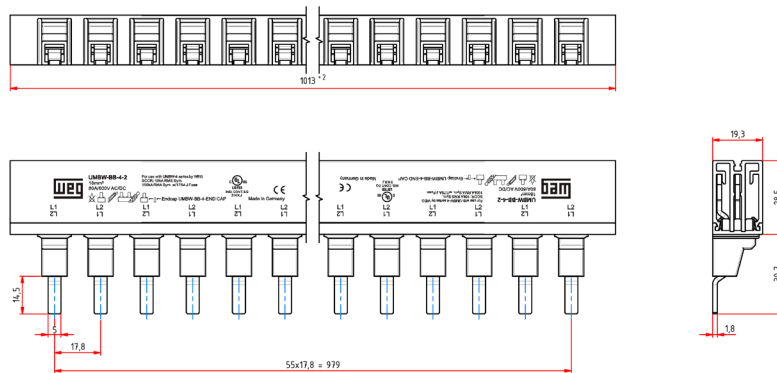
UMBW-BB-4-1



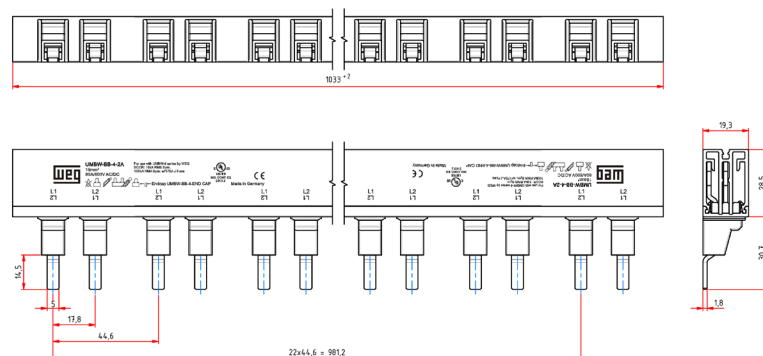
UMBW-BB-4-1A



UMBW-BB-4-2

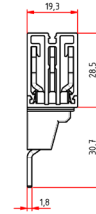
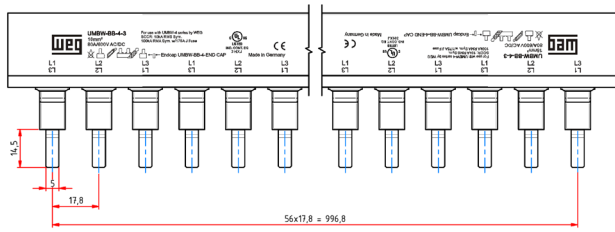
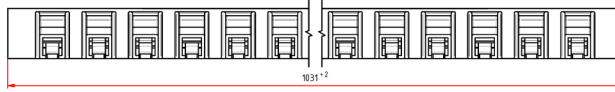


UMBW-BB-4-2A

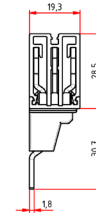
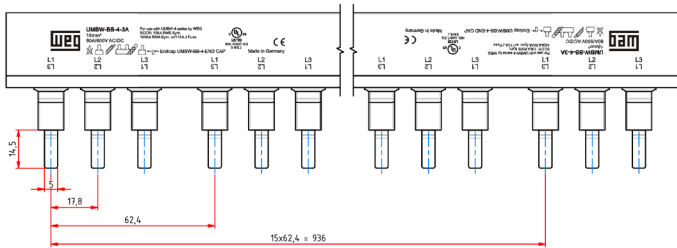


UMBW

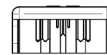
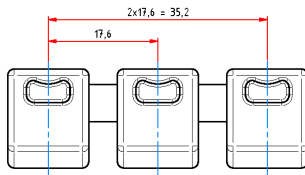
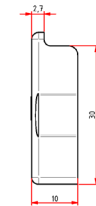
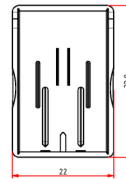
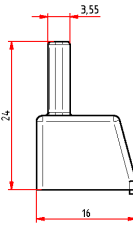
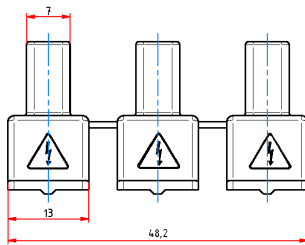
UMBW-BB-4-3



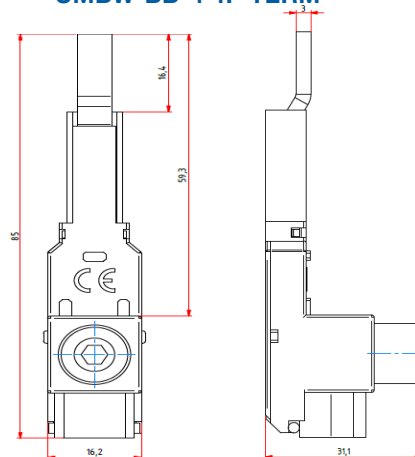
UMBW-BB-4-3A



UMBW-BB-4-BUS CAP-Y



UMBW-BB-4-1P-TERM





WEG Electric Corp. offers the following products, and more! With a full range of IEC/NEMA Global Certifications and a full line of products, WEG can supply the right solution for your needs anywhere in the world. To learn more about WEG's products and solutions or to locate a Distributor near you, please call 1-800-ASK-4WEG or visit www.weg.net.

Low Voltage Motors,

Single and 3-Phase, 1/8 – 700HP

- General Purpose Motors
- Explosion Proof Motors
- Crusher Duty Motors
- IEC Tru-Metric Motors
- Pump Motors including JP/JM
- P-Base Pump Motors
- Oil Well Pumping Motors
- Pool & Spa Motors
- Brake Motors
- Compressor Duty Motors
- Farm Duty Motors
- Poultry Fan Motors
- Auger Drive Motors
- IEEE 841 Motors
- Stainless Steel Wash Down Motors
- Saw Arbor Motors
- Cooling Tower Motors
- Commercial HVAC Motors
- Pad Mounted Motors
- Vector Duty Motors

Large Electric Motors

- Low Voltage 3-phase motors up to 2,500HP
- Motors up to 70,000HP and 13,200V
- Wound Rotor Systems (including starters) up to 70,000HP and 13,200V
- Synchronous Motors up to 70,000HP and 13,200V
- Explosion proof motors (Ex-d) up to 1,500kW and 11kV
- Ex-n, Ex-e, Ex-p motors

Variable Frequency Drives

- Low Voltage 1/4 to 2500HP, 230V – 480V
- Medium Voltage 500-8000HP
- Multi-pump systems
- NEMA 4X
- Dynamic braking resistors
- Line and load reactors
- Plug and play technology
- Network communications: Profibus-DP, DeviceNet, Modbus-RTU
- PLC functions integrated
- Complete line of options and accessories

Soft Starters

- 3-1500HP
- Oriented start-up
- Built-in bypass contactor
- Universal source voltage (230-575V, 50/60Hz)
- Network communications: Profibus-DP, DeviceNet, Modbus-RTU
- Complete Line of options and accessories
- MV Soft-starter 3.3kV, 41.6kV: up to 3500HP, Withdrawable Power Stacks, & 8x PT100 Temperature monitoring

Controls

- Mini – Contactors
- IEC Contactors
- Thermal Overload Relays
- Manual Motor Protectors
- Molded Case Circuit Breakers
- Smart Relays
- Enclosed Starters: combination & non-combination,
- Pushbuttons & Pilot Lights
- Timing & Motor Protection Relays
- Terminal Blocks

Custom Panels

- Custom configured to your specification.
- NEMA 1, 12, 3R, 4 and 4X cabinets
- Quick delivery of preconfigured drives and soft starters
- UL 508 certified
- Low Voltage (230-460)

Generators

- Brushless Synchronous Generators for diesel gen-sets up to 4,200kVA
- Hydro-generators up to 25,000kVA Turbo-generators up to 62,500kVA

Power Transformers

- Built and engineered in North America
- Voltages < 500kV
- Ratings 5-300MVA
- Station class, oil filled, round core, copper windings
- Special configurations and designs available!
- Ask your WEG Sales Representative for details.
- Designed, built, and engineered to ANSI standards.

Custom Solution Package Sales

- WEG can package any of its products for ease of sale! Enjoy a single point of contact for the entire package of products and assistance from quote through after-sales support. Ask your WEG Sales Representative for details.



WEG Electric Corp.
6655 Sugarloaf Parkway
Duluth, GA 30097
Phone: 1-800-ASK-4WEG
www.weg.net

Please contact your authorized distributor: