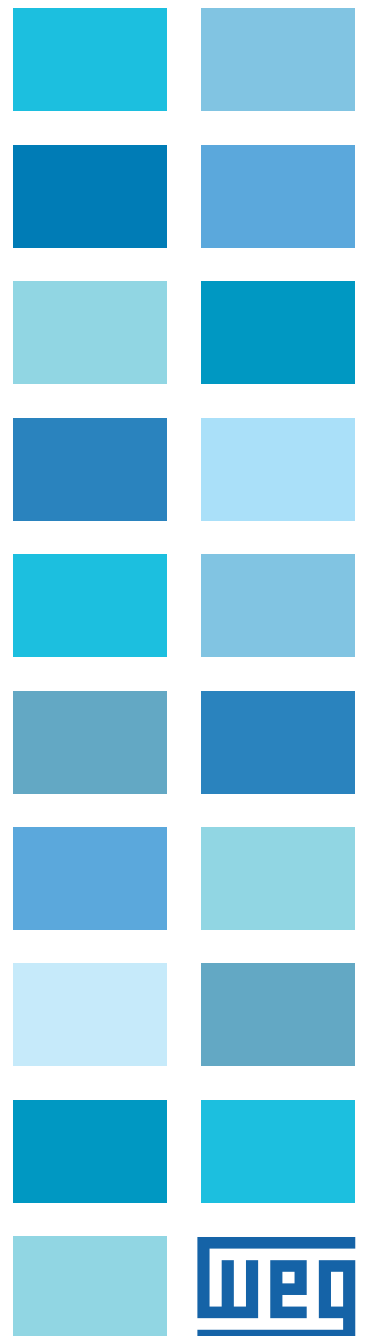


Enclosed Drive Panel

CFW09 - EDP

30 - 500 HP





EDP

The Enclosed Drive Panel is an industrial general purpose AC motor control and protection package. It is designed for simple and quick installation and start-up, requiring only input power and output motor connections.

The Enclosed Drive Panel is built to complement the ruggedness and reliability of WEG electric motors, providing a complete, simple, and cost effective AC motor control, monitor and protection solution.

Standard Features

- V/Hz and Sensorless Vector Control
- 230V, 460V or 575V Input Voltage
- 2 Isolated Analog Inputs
- 6 Programmable Digital Inputs
- 3 Programmable Relay Outputs
- 2 Analog Outputs
- 150% Overload 1min

Standard Panel Includes

- Variable Frequency Drive CFW09
- Keypad Mounted to Panel Door
- Through Door Disconnect
- Control Power Transformer
- NEMA 12 Ventilated Enclosure
- Canadian Certification

Optional Features

- Line Reactor
- Load Reactor
- Panel Control Option
 - Start/Stop Pushbuttons
 - Run/Stop/Fault Pilot Lights
 - Local/Remote Selector Switch

Applications

- Pumps
- Fans
- Blowers
- Conveyors
- Rollout tables
- Agitators
- Mixers

Wall Mounted

230V: 30 - 50HP: 86 - 130A
460V: 30 - 75HP: 45 - 105A
575V: 30HP: 32A

Free Standing

230V: 60 - 75HP: 180 - 240A
460V: 100 - 500HP: 142 - 600A
575V: 40 - 500HP: 44 - 472A





EDP Table of Products

230V										
Standard Product					Optional Features					
HP*	Current (A)	Part Number	List Price	Dimensions	Panel Control		Line Reactor		Load Reactor	
					Part Number	List Price	Part Number	List Price	Part Number	List Price
30	86	EDP09.86/230	\$18,129	60 x 36 x 16	EDP-PNLCTRL	\$681	EDP-KDRF24LI	\$741	EDP-KDRF24LO	\$741
40	105	EDP09105/230	\$22,048	72 x 36 x 16	EDP-PNLCTRL	\$681	EDP-KDRF25LI	\$1,036	EDP-KDRF25LO	\$1,036
50	130	EDP09130/230	\$23,032	72 x 36 x 16	EDP-PNLCTRL	\$681	EDP-KDRF26LI	\$1,194	EDP-KDRF26LO	\$1,194
50	142	EDP09142/230	\$25,300	72 x 36 x 18	EDP-PNLCTRL	\$681	EDP-KDRF26LI	\$1,212	EDP-KDRF26LO	\$1,212
60	180	EDP09180/230	\$30,104	72 x 36 x 18	EDP-PNLCTRL	\$681	EDP-KDR22LI	\$1,390	EDP-KDR22LO	\$1,390
75	240	EDP09240/230	\$36,985	72 x 36 x 18	EDP-PNLCTRL	\$681	EDP-KDR23LI	\$1,415	EDP-KDR23LO	\$1,415

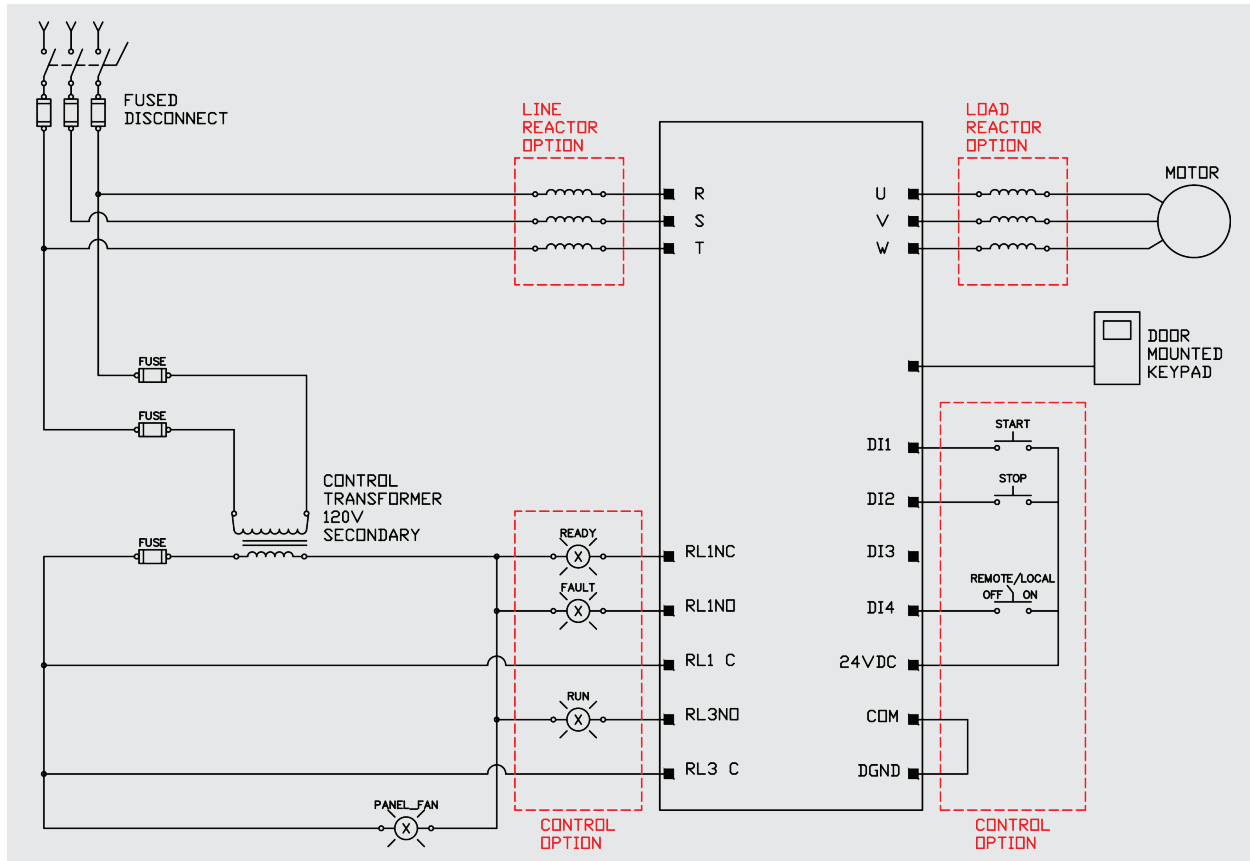
460V										
Standard Product					Optional Features					
HP*	Current (A)	Part Number	List Price	Dimensions	Panel Control		Line Reactor		Load Reactor	
					Part Number	List Price	Part Number	List Price	Part Number	List Price
30	45	EDP09.45/460	\$14,204	48 x 36 x 16	EDP-PNLCTRL	\$681	EDP-KDRD2LI	\$644	EDP-KDRD2LO	\$644
40	60	EDP09.60/460	\$15,959	60 x 36 x 16	EDP-PNLCTRL	\$681	EDP-KDRC1LI	\$697	EDP-KDRC1LO	\$697
50	70	EDP09.70/460	\$16,605	60 x 36 x 16	EDP-PNLCTRL	\$681	EDP-KDRF2LI	\$792	EDP-KDRF2LO	\$792
60	86	EDP09.86/460	\$19,785	72 x 36 x 16	EDP-PNLCTRL	\$681	EDP-KDRF4LI	\$810	EDP-KDRF4LO	\$810
75	105	EDP09105/460	\$22,499	72 x 36 x 16	EDP-PNLCTRL	\$681	EDP-KDRF3LI	\$1,058	EDP-KDRF3LO	\$1,058
100	142	EDP09142/460	\$25,270	72 x 36 x 18	EDP-PNLCTRL	\$681	EDP-KDRH3LI	\$1,201	EDP-KDRH3LO	\$1,201
150	180	EDP09180/460	\$32,953	72 x 36 x 18	EDP-PNLCTRL	\$681	EDP-KDRH1LI	\$1,673	EDP-KDRH1LO	\$1,673
150	211	EDP09211/460	\$36,339	72 x 36 x 18	EDP-PNLCTRL	\$681	EDP-KDRG3LI	\$2,084	EDP-KDRG3LO	\$2,084
200	240	EDP09240/460	\$37,187	72 x 36 x 18	EDP-PNLCTRL	\$681	EDP-KDRG3LI	\$2,084	EDP-KDRG3LO	\$2,084
250	312	EDP09312/460	\$50,888	72 x 72 x 24	EDP-PNLCTRL	\$681	EDP-KDRG1LI	\$2,280	EDP-KDRG1LO	\$2,280
300	361	EDP09361/460	\$52,144	72 x 72 x 24	EDP-PNLCTRL	\$681	EDP-KDRG2LI	\$2,328	EDP-KDRG2LO	\$2,328
350	450	EDP09450/460	\$64,021	72 x 72 x 24	EDP-PNLCTRL	\$681	EDP-KDRJ2LI	\$2,673	EDP-KDRJ2LO	\$2,673
400	515	EDP09515/460	\$73,451	72 x 72 x 24	EDP-PNLCTRL	\$681	EDP-KDRJ1LI	\$2,935	EDP-KDRJ1LO	\$2,935
500	600	EDP09600/460	\$83,399	72 x 72 x 24	EDP-PNLCTRL	\$681	EDP-KDRL2LI	\$5,055	EDP-KDRL2LO	\$5,055

575V										
Standard Product					Optional Features					
HP*	Current (A)	Part Number	List Price	Dimensions	Panel Control		Line Reactor		Load Reactor	
					Part Number	List Price	Part Number	List Price	Part Number	List Price
30	32	EDP09.32/575	\$13,790	48 x 36 x 16	EDP-PNLCTRL	\$681	EDP-KDRD42LI	\$535	EDP-KDRD42LO	\$535
40	44	EDP09.44/575	\$17,278	72 x 36 x 18	EDP-PNLCTRL	\$681	EDP-KDRC43LI	\$570	EDP-KDRC43LO	\$570
50	53	EDP09.53/575	\$19,023	72 x 36 x 18	EDP-PNLCTRL	\$681	EDP-KDRC44LI	\$605	EDP-KDRC44LO	\$605
60	63	EDP09.63/575	\$20,753	72 x 36 x 18	EDP-PNLCTRL	\$681	EDP-KDRF46LI	\$761	EDP-KDRF46LO	\$761
75	79	EDP09.79/575	\$23,280	72 x 36 x 18	EDP-PNLCTRL	\$681	EDP-KDRF47LI	\$786	EDP-KDRF47LO	\$786
100	107	EDP09107/575	\$35,071	72 x 72 x 18	EDP-PNLCTRL	\$681	EDP-KDRF47LI	\$1,058	EDP-KDRF47LO	\$1,058
150	147	EDP09147/575	\$42,721	72 x 72 x 18	EDP-PNLCTRL	\$681	EDP-KDRH44LI	\$1,433	EDP-KDRH44LO	\$1,433
200	211	EDP09211/575	\$48,646	72 x 72 x 18	EDP-PNLCTRL	\$681	EDP-KDR42LI	\$1,517	EDP-KDR42LO	\$1,517
250	247	EDP09247/575	\$63,850	90 x 72 x 36	EDP-PNLCTRL	\$681	EDP-KDRG47LI	\$1,675	EDP-KDRG47LO	\$1,675
300	315	EDP09315/575	\$68,011	90 x 72 x 36	EDP-PNLCTRL	\$681	EDP-KDRG45LI	\$1,938	EDP-KDRG45LO	\$1,938
350	343	EDP09343/575	\$84,040	90 x 72 x 36	EDP-PNLCTRL	\$681	EDP-KDRJ45LI	\$2,150	EDP-KDRJ45LO	\$2,150
400	418	EDP09418/575	\$89,672	90 x 72 x 36	EDP-PNLCTRL	\$681	EDP-KDRJ43LI	\$2,254	EDP-KDRJ43LO	\$2,254
500	472	EDP09472/575	\$98,022	90 x 72 x 36	EDP-PNLCTRL	\$681	EDP-KDRL45LI	\$2,675	EDP-KDRL45LO	\$2,675

* Please note that HP reference is for 4 pole motors (1800 RPM). To size the drive correctly please confirm the Current (A). Sizing table is used for approximation only, final sizing subject to review of application/load details.

Standard Panel includes drive, fuse disconnect, control transformer, door mounted keypad and filtered fan mounted in a NEMA 12 ventilated enclosure. Panel Control Option Includes Start/Stop Pushbuttons, Run/Stop/Fault Pilot Lights and Local/Remote Selector Switch.

Sample Wiring Diagram



This wiring diagram is reprinted for illustrative purposes only and may be subject to change.

PAMENSKY

1 800 ASK 4 WEG (275-4934) Head Office
1 877 PAMENSKY (726-3675) Provincial Office

www.pamensky.com

V.J. Pamensky Canada Inc.

Toronto
64 Samor Road
Toronto, Ontario
M6A 1J7

Montreal
9428 boul du Golf
Anjou, Quebec
H1J 3A1

Winnipeg
10 Hutchings Street
Winnipeg, Manitoba
R2X 2X1

Calgary
Bay #80
5100 - 64 Ave. S.E.
Calgary, Alberta
T2C 4V3

Edmonton
17204 - 114th Ave.
Edmonton, Alberta
T5X 5Y7

Vancouver
3226 - 138A Street
Surrey, British Columbia
V4P 2B4

TEL: 416 781-4617 TEL: 514 341-5950 TEL: 204 633-1438 TEL: 403 240-0629 TEL: 780 444-4465 TEL: 604 531-4004
FAX: 416 781-4352 FAX: 514 341-2945 FAX: 204 633-8720 FAX: 403 240-0959 FAX: 780 449-2543 FAX: 604 531-7009