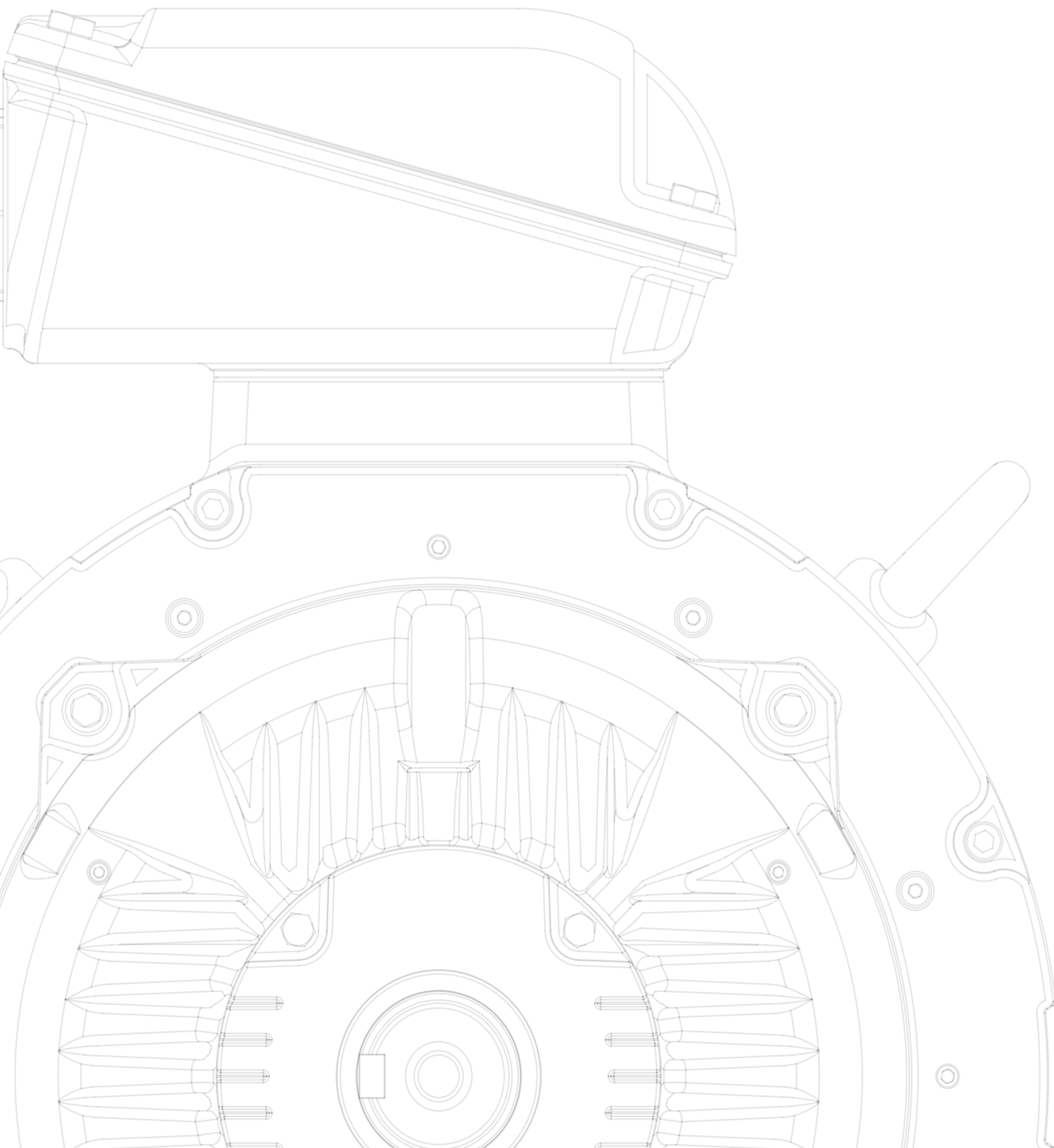


# Disposal and Environmental Information W22 Water Cooled

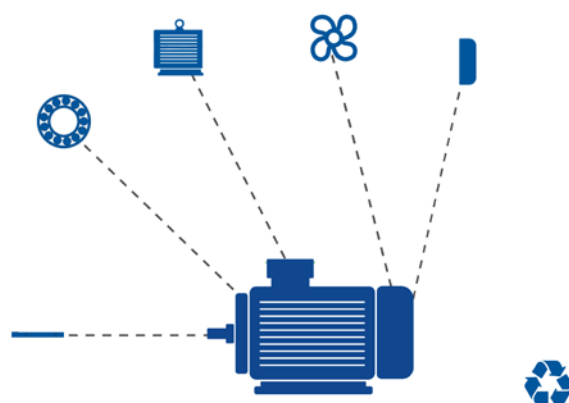




## INTRODUCTION

This document presents disposal and environment information about three-phase and single-phase electric motors, ranging from frame size IEC 112 to 315. It is intended for users, recyclers and treatment facilities, presenting relevant information for the proper disposal and recycling of electric motors.

Concerning product disposal, WEG recommends to separate product parts and packaging materials, and to send them for recycling whenever possible. National environmental regulations may vary in each country in the EU, please contact local WEG for further and up-to-date information about disposal and recycling of our products.





**TABLE OF CONTENTS**

1. PRODUCT DISPOSAL INFORMATION ..... 4

2. ELECTRIC MOTORS ..... 4

3. PACKAGING ..... 7

4. REFERENCE LIST ..... 7

## 1. PRODUCT DISPOSAL INFORMATION

In accordance with Directive 2012/19/EU, on Waste Electrical and Electronic Equipment (WEEE), WEG electric motors are marked with the 'crossed-out wheeled bin' symbol (Figure 1).



**Figure 1** – Indication of selective collection for waste of Electrical and Electronic Equipment (EEE)

It indicates that Electrical and Electronic Equipment (EEE), once reaching their end of life, must not be disposed as unsorted municipal waste, but collected separately and disposed of at appropriate collection points.

The single black line indicates the equipment was placed on the market after the Directive came into force in 2005.

## 2. ELECTRIC MOTORS

Electric motors, under constructive aspect, are mainly manufactured with ferrous metals (steel, cast iron), non-ferrous metals (copper, aluminium) and plastic.

Once reaching product's end of life, proper treatment must be adopted, in accordance with international and local regulations. Treatment facilities must be licensed and must comply with environmental requirements of the Member States they are located in.

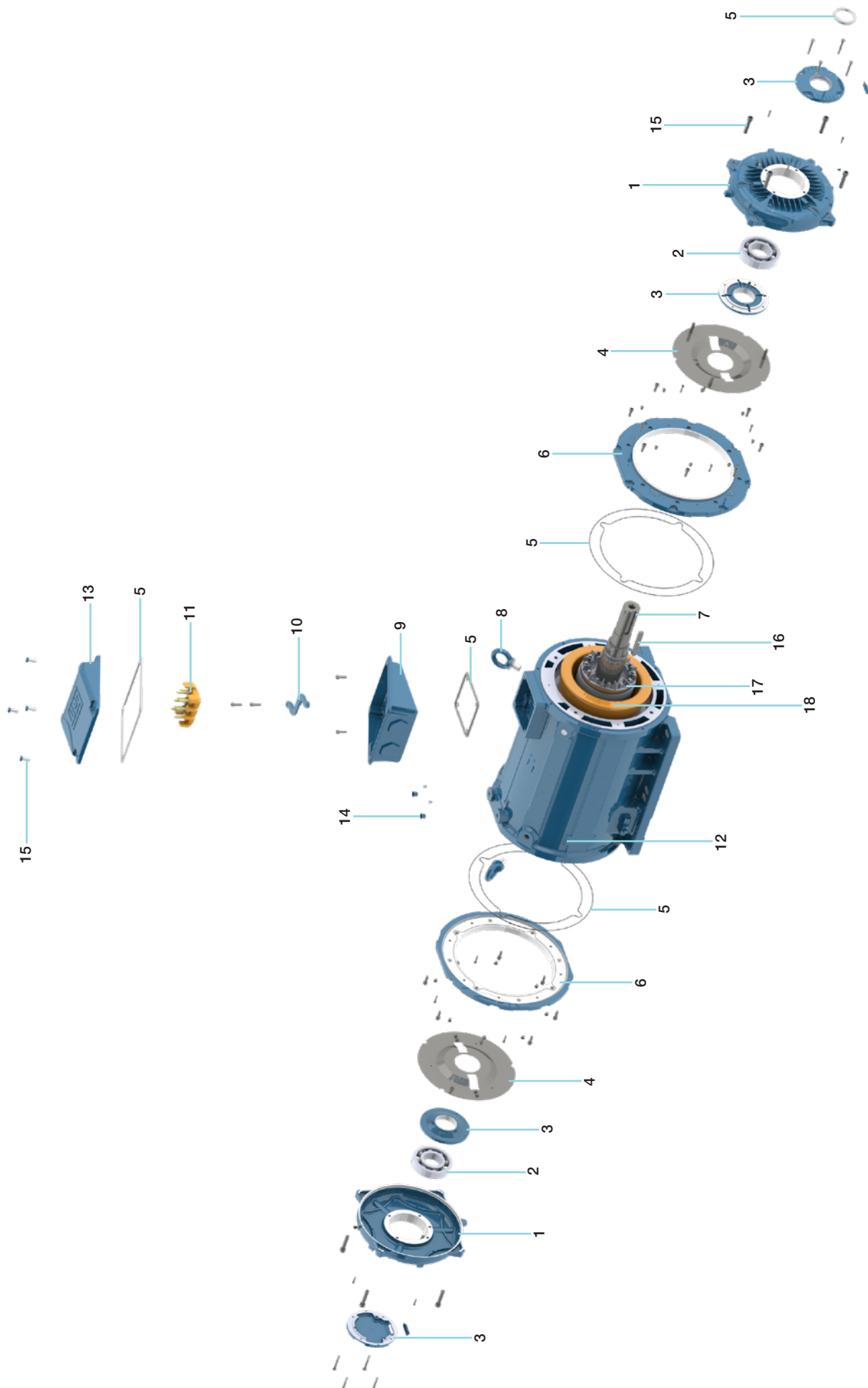
Capacitors, plastic parts containing brominated flame retardants and components containing refractory ceramic fibres need selective treatment, in accordance with EU Waste legislation.

Figure 2 present the main components of a three-phase and a single-phase electric motor, respectively. Table 1 describes these products materials.

| Position | Component              | Material        |
|----------|------------------------|-----------------|
| 1        | Cover                  | Cast Iron       |
| 2        | Bearing                | Steel           |
| 3        | Fixing Ring            | Cast Iron       |
| 4        | Internal Deflector     | Steel           |
| 5        | Sealing                | Rubber          |
| 6        | Intermediate flange    | Cast Iron       |
| 7        | Axle                   | Steel           |
| 8        | Eye                    | Steel           |
| 9        | Connection Box         | Cast Iron       |
| 10       | Terminal Board Support | Cast Iron       |
| 11       | Terminal Board         | BMC             |
| 12       | Housing                | Cast Iron       |
| 13       | Junction Box Cover     | Cast Iron       |
| 14       | Water Buffer           | Plastic         |
| 15       | Screw                  | Steel           |
| 16       | Key                    | Steel           |
| 17       | Rotor                  | Steel/Aluminium |
| 18       | Stator                 | Steel/Copper    |

**Table 1** – Components of the electric motor





**Figure 2 – Exploded view of the electric motor**

### 3. PACKAGING

Electric motors packagings are made of carton, plastic, steel or wood. These packagings are in compliance with the Directive 94/62/CE on Packaging and Packaging Waste and its amendments.

These materials are recyclable and WEG recommends recycling them in accordance with national regulations of each EU Member State.

### 4. REFERENCE LIST

1. Directive 2012/19/EU of the European Parliament and of the Council of 4 July 2012 on waste electrical and electronic equipment (WEEE).
2. European Parliament and Council Directive 94/62/EC of 20 December 1994 on packaging and packaging waste.





+55 47 3276.4000

[motores@weg.net](mailto:motores@weg.net)

Jaraguá do Sul - SC - Brazil

Code: 50152025 | Rev: 00 | Date (m/y): 06/2025.

Subject to modifications without previous notice.  
The information contained herein is reference values.