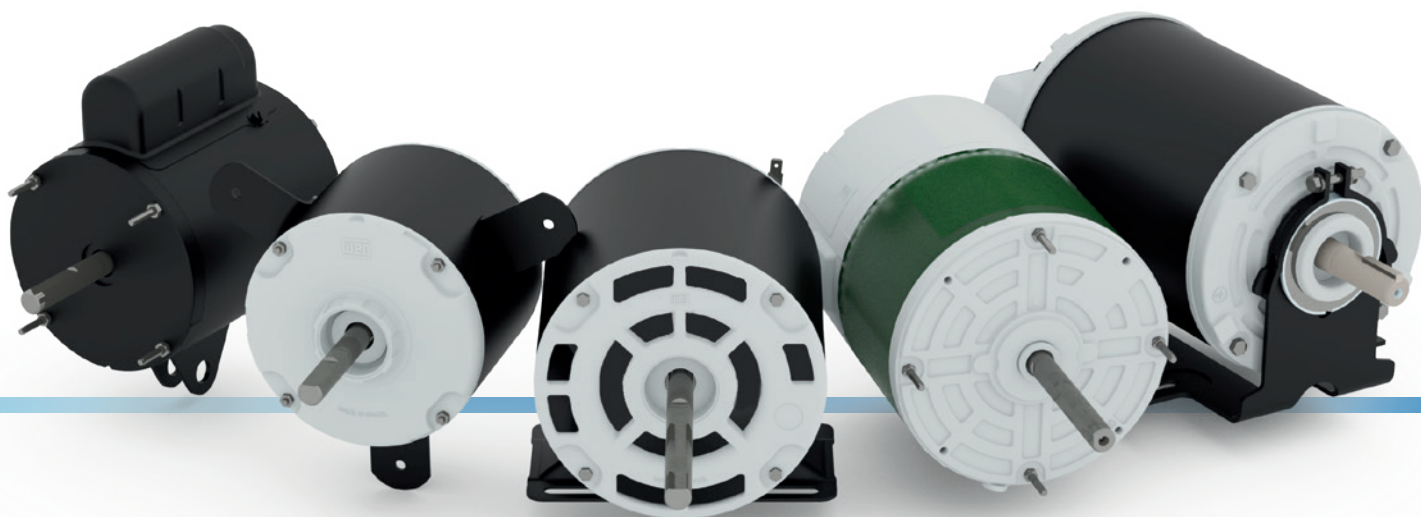


HVAC Motors

For a wide variety of
air moving applications



HVAC Motors

Standard Features

- Three-phase or single-phase (run capacitor)
- Frame: 42 and 48
- Voltage: 115/208-230, 230, 127, 127/220 or 220 V
- Output: 1/40 up to 3/4 HP
- Number of poles: 4 and 6 (8 poles up to 1/4 HP)
- Frequency: 60 Hz, 50 Hz or 50/60 Hz
- Rotation: clockwise or counter clockwise
- Enclosure: opened or closed

Optional Features

- Mounting: footed, welded tabs, ext-studs, yoke, belly band
- Certification: CSA and UL under evaluation
- Up to 3 speeds
- Thermal protection: With

Application

Our motors are versatile and compact, designed with leading-edge technology suitable for a wide variety of air moving applications.



Air Curtain



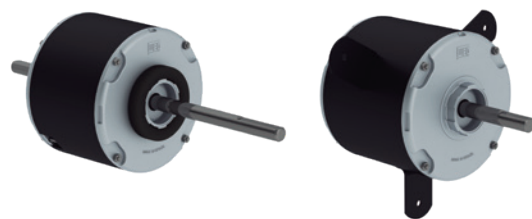
Pedestal Fan



Split A/C Units

Evaporator Unit

Condenser Unit



Kitchen Hood

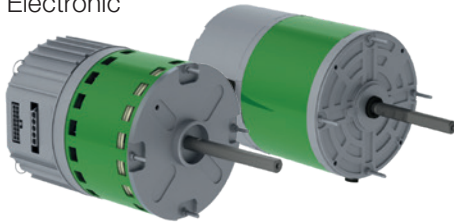


Exhaust Fan

Standard Features

EC Motors

- Single-phase
- Frame: 48
- Voltage: 115/208-230, 115/208-277, 220-277, 460V
- Output: 1/6 thru 1.5 HP
- RPM: 300 thru 1950
- Frequency: 60/50 Hz
- Enclosure: opened or enclosed
- Speed control: on-board or remote
- Protection: Electronic



Standard Features

Resilient Base Motors

- Single-phase
- Frame: 48 and 56
- Voltage: 115/208-230, 277 V
- Output: 1/4 thru 1 HP
- Number of poles: 2 and 4
- Frequency: 60 Hz
- Enclosure: opened or enclosed



Application

WEG's EC Motors and Resilient Base Motors are versatile and compact, designed with leading-edge technology suitable for a wide variety of air moving applications.



Air Handlers



Exhaust Fan



Horticultural Circulation



Refrigeration



Energy Recovery Ventilator



Process Cooling

For WEG's worldwide
operations visit our website



www.weg.net



MOTORS



+1 678 2492000



info-us@weg.net



Duluth - Georgia - US



www.weg.net

Cod: 50100633 | Rev: 01 | Date (m/a): 10/2020.

The values shown are subject to change without prior notice.

The information contained is reference values.