

Control Panel Retrofit Solutions



Retrofit Replacement Starter Chassis:

- Drop-in simplicity: The SSW900 soft starter is proven to fit within the space of legacy models like the RAM DBS, minimizing disruption and installation time.
- Cost-effective upgrade: Keep your existing enclosure, oil pump starter, and other components.
- Quick and easy: Easy installation and startup gets your system back online fast, saving you production time.
- Modernize your technology: Enjoy reduced energy consumption, extended motor life, and enhanced operational efficiency.



Complete Panel Replacement

- Full System Modernization: Get a brand-new WEG control panel, pre-wired and tested, for a complete overhaul.
- Enhanced Safety & Reliability: WEG Industrial Refrigeration control panels are rated 65kAIC SCCR and include a full panel warranty.
- Modernized control: Gain access to advanced features, improved communication capabilities, and easier maintenance.
- Future-proof your system: Invest in a solution that adapts to your evolving needs and regulations.



Choose the upgrade that's right for you:

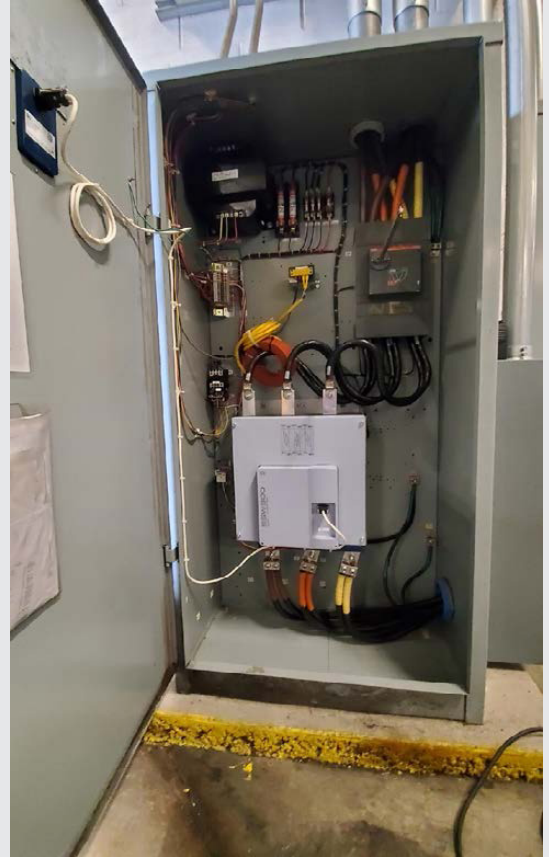
- Retrofit: Perfect for budget-conscious upgrades or where minimal disruption is crucial.
- Complete Panel: Ideal for comprehensive modernization, full panel warranty, and future-proofing your operation.



Control Panel Retrofit Solutions



**Original RAM 400 HP
Solid State Starter**



**Retrofitted 400 hp Solid State Starter
Includes SSW900**

Information Needed to Quote:

- Type of Starter (Soft Starter, VFD, etc)
- Voltage
- HP
- Motor FLA / Service Factor
- Enclosure Rating
- Panel Options (oil pump starter, comms, etc)
- Ambient Temperature & Altitude
- Cable Entry & Exit Locations
- Existing Starter Data (dimensions, rating, etc)
- Motor Nameplate Data



WEG Electric Corp.
6655 Sugarloaf Pkwy.
Duluth, GA 30097
Phone: 1-800-ASK-4WEG
www.weg.net
refrigeration@weg.net

