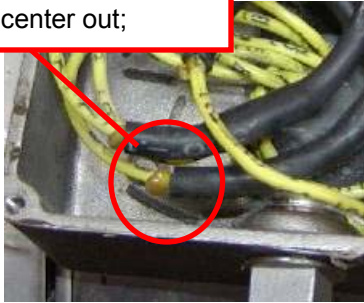


HydroDuty washdown motors are designed to be the most durable washdown motors made. For proper operation of your HydroDuty motor, please read the following installation and operating tips:

1 The splice kit must be used when making electrical connections. Failure to do so will result in premature motor failure and will void the warranty. Wire nuts and electrical tape are not acceptable because they are not water tight. Please see splice kit instructions in the plastic bag inside the conduit box for proper installation.

Shrink tubes properly installed: shrunk from center out;



RIGHT

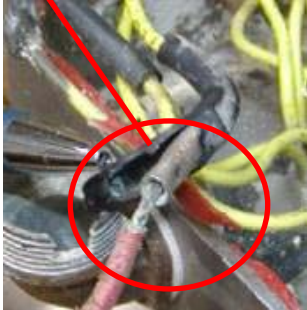
WRONG

Wire nuts & electrical tape should not be used



2 Ensure that leads are properly crimped during installation of the splice kit. Improper crimping of leads can result in premature

Wire is not crimped properly.



WRONG

3 Keep the area around the breather vent clean to prevent blockage of the vent and to ensure proper function. Condensation inside the motor will not be expelled if the vent is plugged. Do not remove the breather vent. Should it be knocked out, please contact Bluffton Motor Works for a replacement.

Vent is plugged

WRONG



Vent is missing

WRONG



4 Keep the drain hole in the conduit box clean and unplugged at all times to ensure proper function. The conduit box is designed to drain accumulated water resulting from plant sanitation process

WRONG



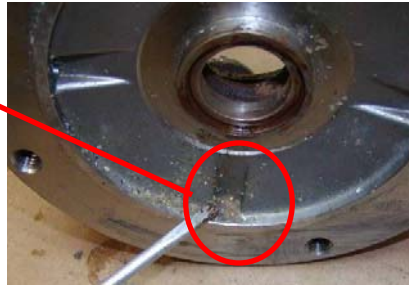
Drain hole intentionally plugged-consequently, water will not drain and is held in the conduit box.

WRONG



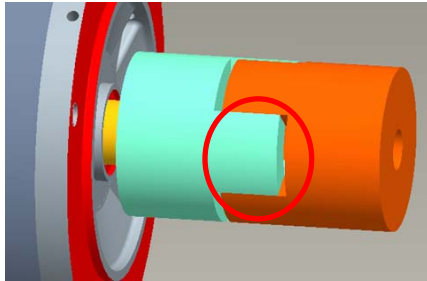
5 Keep the center cavity drains clear to extend motor life when motor is connected to the gearbox, mounted vertically, etc. If these drains become plugged, the resulting water build up can become a source that will work its way down the shaft and cause bearing failure.

Center cavity drain hole is plugged, preventing water from draining.

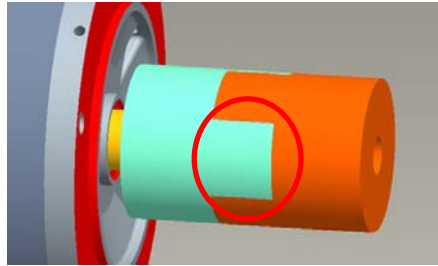


6 Incorrect installation of the coupler can cause damage to the bearings and eventual motor failure. The couplers should not bottom out against each other as shown in the second illustration.

RIGHT



WRONG



7 Improper coupling of shaft can cause shaft damage.

Shaft fretting and worn because something has run loose on shaft.



Shaft broken at keyway



8 Bags and covers to shield or protect the motor are not recommended as they withhold heat, causing the motor to run hotter. This can shorten the motor life. HyrdoDuty is designed to be sprayed down and to operate in a wet environment.

Failure to follow these instructions may result in premature failure and void the warranty



410 E. Spring Street
Bluffton, IN 46714
800-579-8527 260-827-2200
www.hydroduty.com

574153101 REV.O