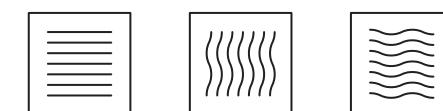
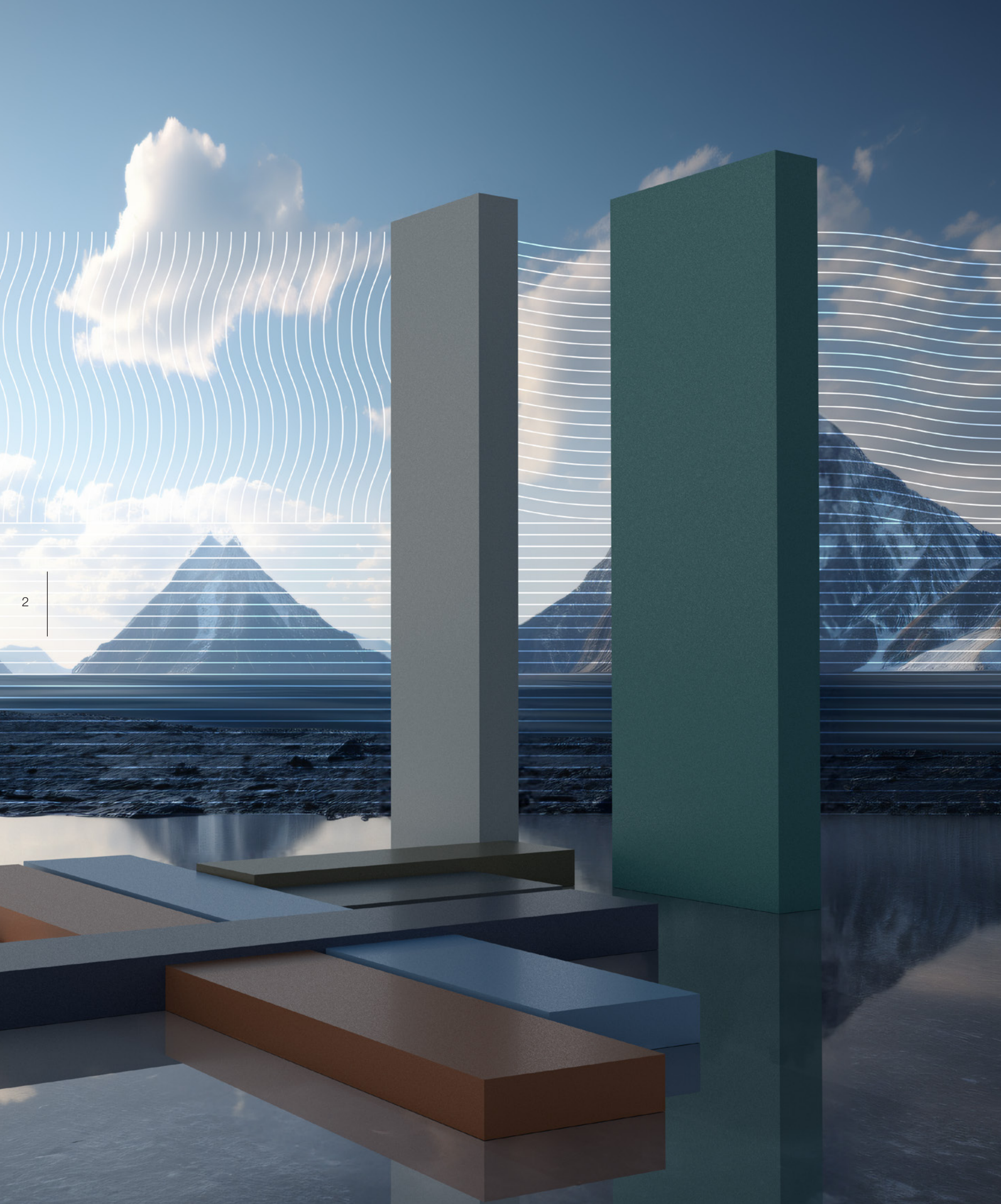


POLITHERM

ARCHITECH



weo



The trend in architecture is to create connections with nature.

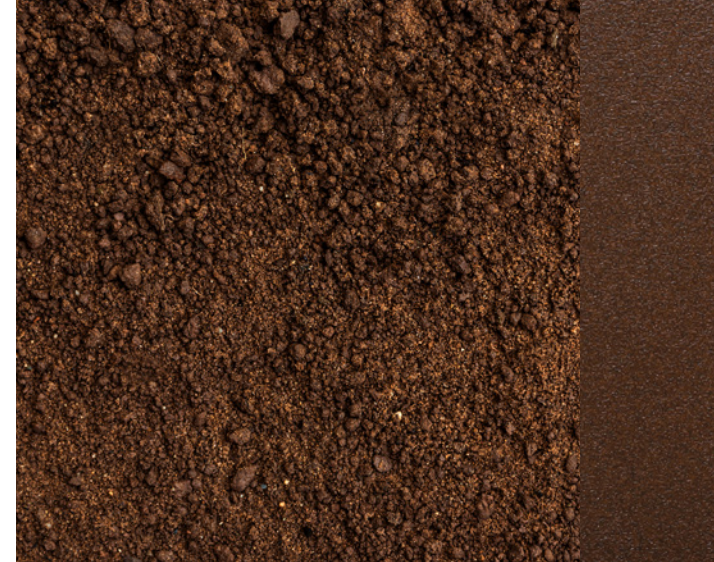
Architectural designs reflect people's nature, their essence and personality. In each place, choosing the right colors can produce comfort, well-being and vitality.

That's why the POLITHERM ARCHITECH line of powder coatings offers forty colors that call the elements of nature to mind, inspired by the stability of dry land, the lightness of clear air and the smoothness of water flow.

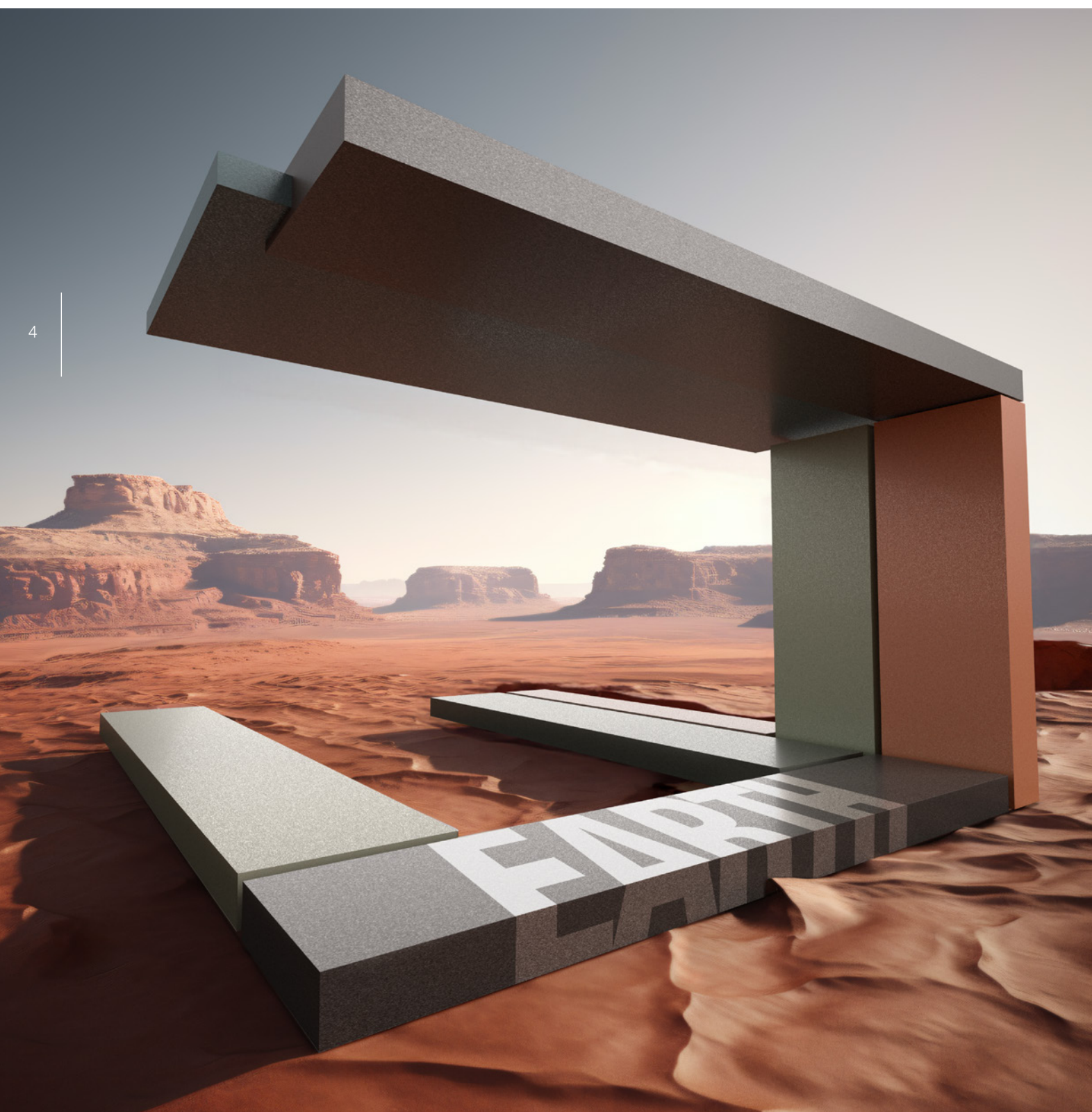
These are colors made to help protect the nature that surrounds us. Which connect to contemporary architecture in a natural and elegant way.

Which motivate an instinctive connection with each person's nature.

The stability of dry land.



Canyon Brown
14040805



Earthy tones evoke the calm and safety of the stable earth under our feet. They provide a warm and inviting atmosphere, being a haven of tranquility amid the turbulence of the outside world.

The inspiration of this element unfolds in a rich palette of pigments in different earthy tones—from the calmest to the warmest—in copper shades and also in greenish shades, referring to the strength of the vegetation that covers the ground.



Terra-cotta Brown
16671060

The lightness of clear air.



Diamond White
14794221

The clear air is felt with each deep breath. It represents the freshness and vitality of nature. It brings a feeling of renewal, creating an atmosphere of lightness and serenity. From inspiration, pigments emerge in neutral blue, gray and black tones. The different shades of white derive from the lightness, purity and sophistication of the gentle breeze.

Sky Gray
14718131



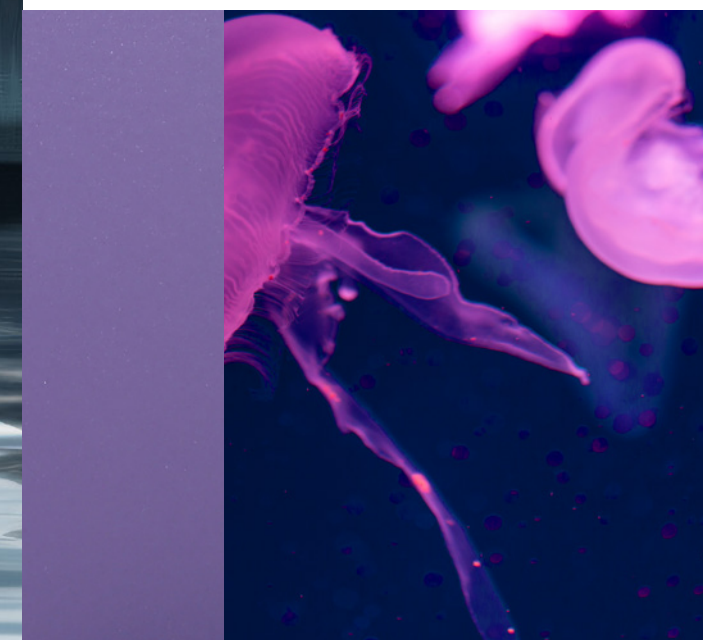
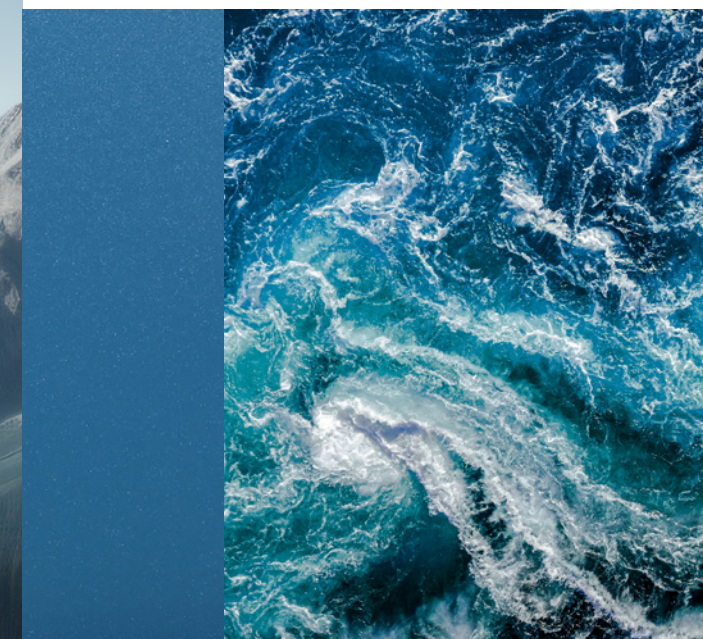
The smoothness of water flow.

Just as the water flow remains malleable and free along its course, the soft colors call calm waters to mind, involving us in an aura where time seems to pass more slowly.

The richness of the aquatic world is revealed in green and blue tones in deep and vibrant spectrums and also in the rich details of the seabed, reflected in pink and lilac tones.



Glacial Blue
17493086



Violet Amethyst
17492444



Innovate today to preserve tomorrow.

At each stage of the WEG powder coatings production process, the most innovative and advanced technologies are employed, resulting in solutions that promote sustainability.

They are solvent-free products that help protect the environment, while providing highly durable paintwork, reducing the need and costs for repainting and touch-ups.

It is no coincidence that the powder coatings from the Politherm ARCHITECH line are gaining more and more space: it is because they have a low environmental impact, are produced with the efficiency of new technologies and offer excellent quality results.



Flamingo Red
14671136



Amethyst Violet
17492444



Sky Blue
17518551



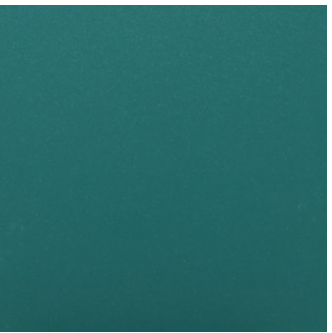
Glacial Blue
17493086



Carbon Graphite
16665993



Blueberry Blue
16032568



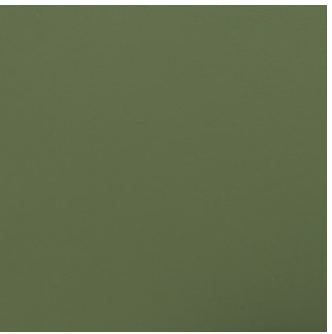
Agate Green
17494867



Safari Green
14784526



Atacama Beige
17490658



Algae Green
17490679



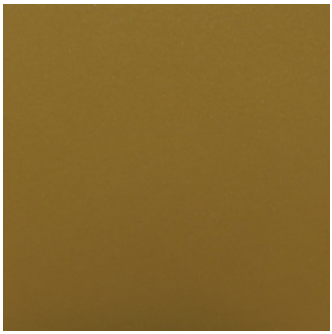
Noble Bronze
17512318



Hazelnut Bronze
17512232



Moss Green
17507102



Aurora Gold
17524510



Terra-cotta Brown
16671060



Amber Brown
17524871



Kalahari Brown
14662737



Canyon Brown
14040805



Tiramisu Brown
17524042



Mediterranean Brown
10888950



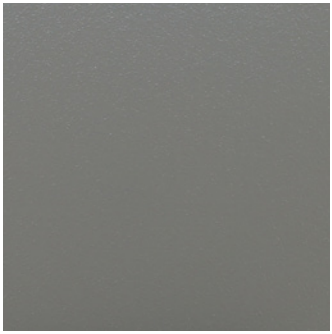
Cocoa Bronze
17524910



Espresso Brown
17507543



Papyrus Beige
17512326



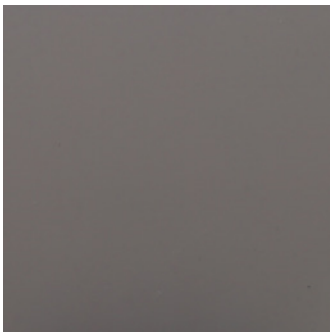
Concrete Gray
17497649



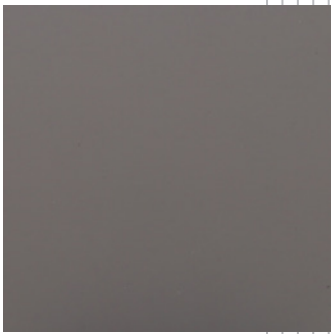
Cappuccino Beige
17524808



Pyrite Beige
16790617



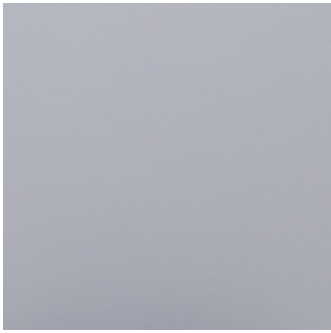
Clay Gray
14800125



Galactic Gray
15534982



Diamond White
14794221



Lunar White
17519180



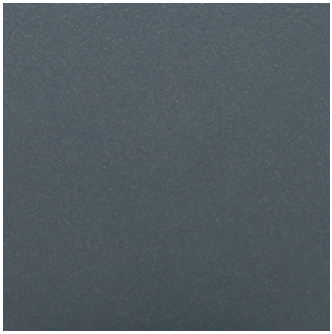
Polar White
14796093



Urban Gray
17502201



Slate Gray
15593925



Sky Gray
14718131



Elegance Graphite
17500546



Basalt Graphite
14202207



Platinum Gray
14600881



Petroleum Black
14649445



Sublime Black
16931413



Imperial Black
15548464

POLITHERM ARCHITECH 46 WF

High resistance, perfect finish and low environmental impact.

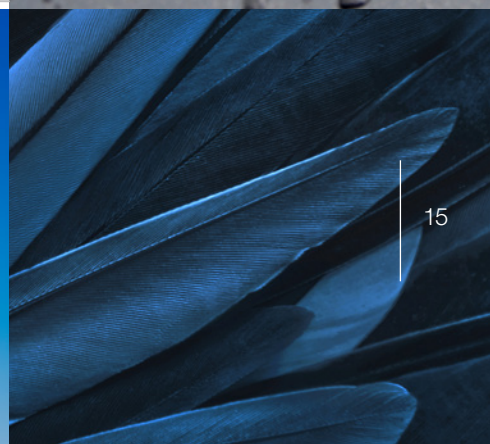
The 46 WF line is the favorite choice for aluminum profiles and tiles that require high-resistance painting and a flawless finish.

This quality comes from a careful selection of resins and pigments that make up the coatings, offering colors that replace the anodized finish and, therefore, reduce the environmental impact.

Choosing the 46 WF line is to guarantee the preservation of the color characteristics and the necessary protection against the effects of weather, with an expected minimum durability of eight years.

Colors to replace anodized finish:

- Urban
- Imperial Black
- Petroleum Black
- Sublime Black
- Cocoa Bronze
- Hazelnut Bronze
- Noble Bronze
- Espresso Brown



Durability

8
YEARS

POLITHERM
ARCHITECH **96 WFQ**



**Greater protection
for surfaces and
the environment.**

The 96 WFQ line was developed to protect the surfaces on which it is applied and to ensure greater environmental protection in its production process.

Its extremely high quality comes from the set of technologies applied, special pigments and durable polyester resins that meet the most demanding requirements of the Qualicoat Standard –

Class 1¹⁾ (Approval P-1031, P-1717 and P-1858). The result could not be different: extremely high resistance to the weather effects with a minimum durability of 12 years.

Durability

12
YEARS

Note: 1) For certification in Class 1, the product must be exposed to natural weathering for one year in Florida (USA) under specific conditions.

Blueberry Blue
16032568

POLITHERM ARCHITECH 86 WFS

Colors preserved and inspired by nature.

Aluminum profiles are made to last for many years and, to that end, they need to be protected by coatings with high resistance and color preservation capabilities. This is why the 86 WFS line is increasingly popular among specialists.

This line is composed of special pigments, superdurable polyester resins and excellent quality raw materials, using processes with low environmental impact. This is how its different colors, textures and gloss inspired by nature guarantee a minimum durability of 16 years.

Durability

16
YEARS

Carbon Graphite
16665993

POLITHERM
ARCHITECH

106 WFQ

Sustainable process that meets the highest standard.

The formulation of the 106 WFQ line uses special pigments, high-quality superdurable polyester resins and raw materials from the global leading suppliers. For being produced with low environmental impact, offering a minimum durability of 20 years¹⁾ and extremely high weather resistance, this line complies with the highest requirements of the Qualicoat Standard – Class 2²⁾ (Approval P-1927).



Aurora Gold
17524510

Notes: 1) The expected durability mentioned in this catalog is measured by the parameters defined in the Technical Data table on page 16. To learn more, visit the Durability Guide at the Download Center of WEG website (www.weg.net), and for any further explanation, contact WEG Coatings via website or at: tintas@weg.net.

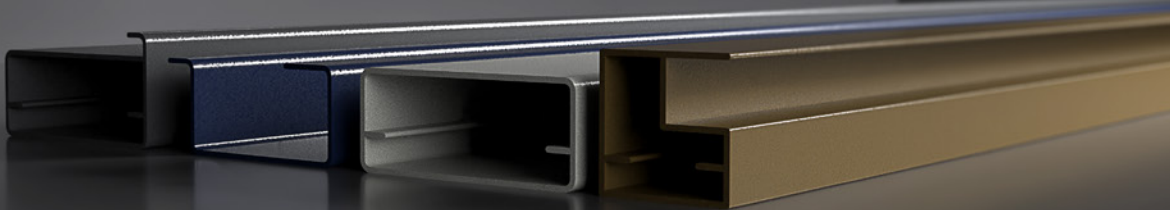
2) For Class 2 certification, the product must be exposed to natural weathering in Florida (USA) for 3 year under specific conditions.

Durability

20
YEARS

TECHNICAL DATA

The technical data presented below refer to the minimum product performance to meet the referred qualifications, not necessarily representing the actual performance of the product.



Resistance	POLITHERM ARCHITECH 46 WF ABNT NBR 14125 – Class 1	POLITHERM ARCHITECH 96 WFQ QUALICOAT Class 1 Approval P-1031	POLITHERM ARCHITECH 86 WFS ABNT NBR 14125 – Class 2	POLITHERM ARCHITECH 106 WFQ QUALICOAT Class 2
Color variation (DE) After 1000 hours of accelerated weathering test, xenon arc lamp. (ISO 16474-2, method A, cycle 1.)	DE ≤ 2.0 ¹⁾	DE ≤ 2.0 ¹⁾	DE ≤ 1.0 ¹⁾	DE ≤ 1.0 ¹⁾
Gloss retention (%) After 1000 hours of accelerated weathering test, xenon arc lamp. (ISO 16474-2, method A, cycle 1.)	Min. 50% of initial gloss	Min. 50% of initial gloss	Min. 90% of initial gloss	Min. 90% of initial gloss
Natural weathering Exposure to Florida (USA), 5° South (years).	Lines with an excellent track record of durability in Brazil	1 year Color variation: DE < 2,0 ¹⁾ Gloss retention: min. 50%	Lines with an excellent track record of durability in Brazil	3 years Color variation: DE < 2,0 ¹⁾ Gloss retention: min. 50%

Note: 1) Color variation information is based on RAL 9003 color standard; for other colors refer to Appendix A7 of Qualicoat Standard 15th Edition, 2017.

Cappuccino Beige
17524808

SURFACE TREATMENT

The durability of Politherm ARCHITECH powder coatings is high due to all the care that goes into its composition and production. However, the performance of the coating is directly related to proper surface treatment, as it provides the characteristics of corrosion resistance and adhesion to the final product. To ensure a satisfactory performance, some tests are performed to prove the synergy between the aluminum substrate, the pretreatment, the painting process and the powder coating used:

- Embedding
(ISO 1520)
- Bend Test (Cylindrical Mandrel)
(ISO 1519)
- Bend Test (Tapered Mandrel)
(ABNT NBR 14615)
- Impact
(ISO 6272-2 / ABNT NBR 14127)
- Acetic Acid Salt Spray Test
(ISO 9227 / ABNT NBR 14905)
- Accelerated Corrosion Resistance - Machu Method
(ABNT NBR 14901)
- Wet Adhesion
(ISO 2409 / ABNT NBR 14682)
- Resistance to Humid Conditions
(ISO 6270-2)
- Filiform Corrosion Test
(ISO 4623-2)

GLASS BONDING TEST

When applied and cured correctly, coatings allow the use of adhesives and sealants without worrying about flaws. However, together with the adhesive manufacturer, the user must conduct previous tests in order to select the most suitable adhesive and/or sealer.

APPLICATOR CERTIFICATION

WEG Coatings has several applicators certified to use the Politherm ARCHITECH line based on important and strict criteria, evaluated by experts:

- Validation of the oven cure curve (thermography)
- Traceability of the entire treatment and painting process
- Cure tests
- Adhesion tests
- Bending tests
- Wet adhesion tests
- Accelerated corrosion tests
- Acetic salt spray tests
- Accelerated weathering tests



Sky Blue
17518551

NOTES:
a) For any additional technical explanation, please contact our technical department.
b) QUALICOAT (Qualicoat - Association for Quality Control in the Lacquering, Painting and Coating Industry) is an entity that grants a quality mark license to promote and maintain the quality of painted coatings.

The scope of WEG Group solutions is not limited to the products and solutions presented in this brochure.

**To know our portfolio,
contact us.**

**For WEG's worldwide
operations visit our website**



www.weg.net

f i wegcoatings

COATINGS



+55 (47) 3276.4000

tintas@weg.net

Guaramirim - SC - Brasil ☎ +55 (47) 3276.4000

Mauá - SP - Brasil ☎ +55 (11) 4547.6100

Cabo de Santo Agostinho - PE - Brasil ☎ +55 (81) 3512.3000

Betim - MG - Brasil ☎ +55 (31) 3268.0686

Buenos Aires - Argentina ☎ +54 (11) 4299.8000

Atotonilco de Tula - México ☎ +52 (55) 5321.4231