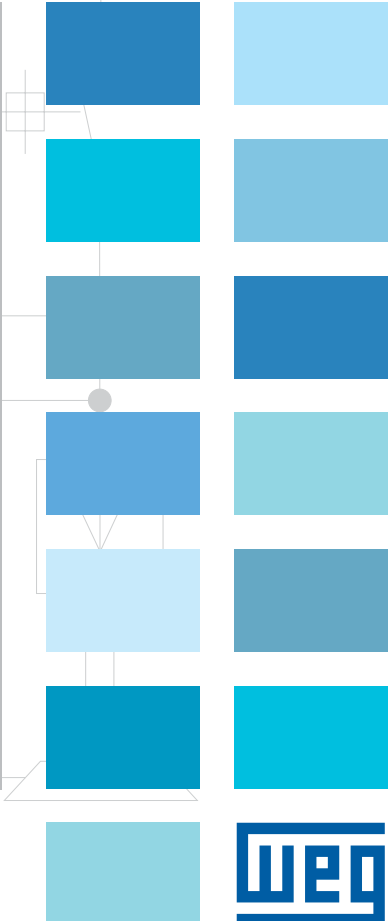
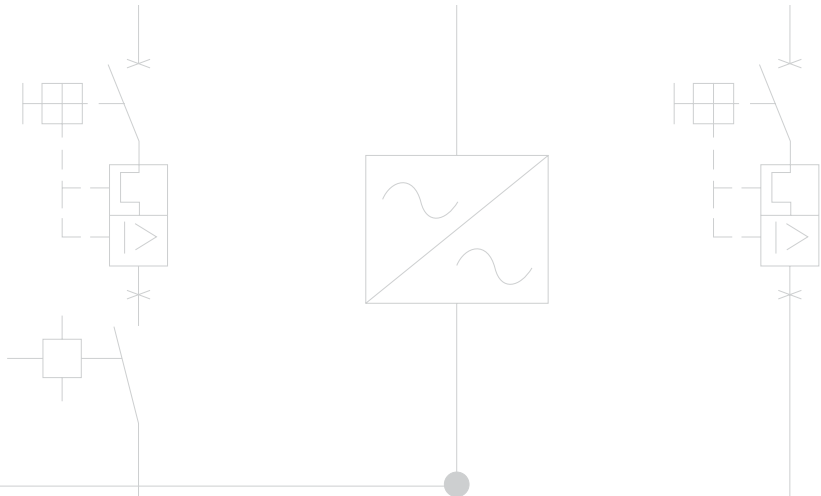


# AFW500-C / AFW700-C / AFW11-C

## Frequency Inverter Cabinet







# Frequency Inverter Cabinet AFW500-C / AFW700-C / AFW11-C

## Summary

Introduction	04
Benefits	05
Applications	06
Main Features	09
Nomenclature	10
Technical Specification	11
Options	12
Dimensions	14





# COMPLETE SOLUTION TO DRIVE THREE PHASE ASYNCHRONOUS MOTOR

The AFW500-C / AFW700-C / AFW11-C is a complete solution to drive three phase induction motors, mounted on an electric panel with built-in CFW500 / CFW700 / CFW11 frequency inverter. Its design, manufacturing and assembly rely on **WEG's expertise, quality assurance, safety and excellent cost-effectiveness.**

It also offers practicality and flexibility, and can be assembled with the optional and accessories available, according to the need of the application. In addition, the CFW series inverters are equipped with a small PLC (called Soft PLC), which provides PLC functions. The user can create their own applications through WLP software (ladder programming).

## Benefits



Optional and accessories available



Guaranteed protection



Assembly warranty



Suitable for diverse applications



## Applications

The inverter cabinet can be used in both simple or sophisticated applications, due to its broad range of functions and easy configuration, installation and operation. The AFWs, through its vectrue inverter technology, presents excellent static and dynamic performance, precise torque and speed control, dynamic response, positioning accuracy, and high overload capacity. The AFWs were also developed for applications where the decisive factor is safety, by several built-in protections and alarms as well as through the safety stop function in accordance with EN ISO 13849-1 and IEC 62061 / IEC 61508.\*



- Precise control of process variables (pressure, flow, temperature, etc.) through a PID regulator superposed to the speed control;
- Optimization of power consumption through speed control with an adjustable V/F curve;
- Possibility of safety and maintenance signalling, and alarms of pumps;
- Availability of PID regulators to control other process accessories like valves, dumpers, other VSDs, etc.



- Robust and large overload capacity (models sized in HD);
- Highly compact;
- Fieldbus;
- Quick and simplified programming;
- For large power ratings, modular topology is used.



- Highly reliable and robust;
- Highly compact;
- Plug & Play system for additional modules, ensuring greater flexibility in adapting to existing systems;
- Fieldbus.

Note: “\*”- Safety stop is not available in AFW500-C.

- Three modes of vector control;
- Highly compact;
- Intelligent control of ventilation system;
- SoftPLC function.



- Optimize the system air volume control, save energy and improve efficiency;
- Reduce motor starting current, reduce mechanical system wear and electricity cost;
- Can user-defined the safety and maintenance inform and alarm function of fan;
- Fans unit system starts control, improve efficiency.



- Monitoring parameters displayed at once on the keypad;
- USB communication port at the front of the VSD for data monitoring and parameters configuration via software SuperDrive G2;
- Precise speed and torque control;
- Flexible hardware programming and configuration, making applications where synchronism is required easier;
- Fieldbus;
- Highly compact;
- Quick and simplified programming;
- Highly reliable and robust.







Cooling

- SoftPLC function built in the standard product enabling the use of two controllers simultaneously. This characteristic is for HVAC applications;
- Monitoring parameters displayed at once on the keypad;
- USB communication port at the front of the VSD for data monitoring and parameters configuration via software SuperDrive G2.



Sugar and Alcohol

- Modular and compact;
- 12-pulse rectifier for reduction of harmonic contents;
- Regenerative braking for centrifuges;
- Highly robust and reliable.



Process Machines

- Built-in PLC and real time clock;
- Easiness and flexibility for connecting to the most used fieldbus network;
- Fieldbus;
- Precise speed and torque in all speed ranges;
- User friendly interface and programming.

## Main Features

- Cabinet protection degree: IP42-IP54
- Supply voltage and frequency: 380-480V 50/60Hz
- Rated current: 3-1141A
- Maximum output power: 2-1000HP
- Control voltage: 220VAC 50/60Hz or 24VDC
- Safety to assembly
- Easy to use

## Standard Design

- Internal DC bus reactor (built-in of inverter)
- Control panel (HMI) installed on the cabinet door
- Emergency stop button
- Remote control cable for HMI
- Dehumidifier and lighting system: 220V 50/60Hz)
- RFI filter (built-in of inverter)
- Moulded case circuit breaker (38-1141A)
- Air circuit breaker (3-31A)

## Optionals

- Profibus-DP and DeviceNet module
- Pt-100 module
- Encoder connect module (CFW700 for standard)
- Extended input and output (I/O) module
- Extended PLC module (for CFW11/CFW700 series)
- Button and switch
- Input reactor
- Output reactor
- Safety-stop (for CFW11/CFW700 series)
- External electronic supply 24Vdc
- Special software
- Position and direction of incoming cable
- Coating color



AFW11

## Special configuration (Please consult WEG)

- Supply voltage: 200-240V; 660-690V
- Cabinet protection degree : IP55; P56





## Nomenclature

Inverter Series	Rated Current	Number of power phases	Power Supply Voltage	Option Kits	Protection degree	Option code	Painting	Code end
2	3	4	5	6	7	8	9	10
AFW11C	0370	T	4	0	IP42	H101	RAL7035	Z

### 2 - Series

AFW11C	Internal WEG CFW11 series
AFW500C	Internal WEG CFW500 series
AFW700C	Internal WEG CFW700 series

### 3 - Rated Output Current

AFW11C series inverter rated output current (A)			
Code	Cabinet Size	Power source voltage 380-480V, 3 phases	
		ND (Normal Duty)	HD (Heavy Duty)
0003	A	3.6	3.6
0005		5	5
0007		7	5.5
0010		10	10
0013		13.5	11
0017	B	17	13.5
0024		24	19
0031		31	25
0038	C	38	33
0045		45	38
0058		58.5	47
0070	D	70.5	61
0088		88	73
0105	E	105	88
0142		142	115
0180		180	142
0211		211	180
0242	F	242	211
0312		312	242
0370		370	312
0477		477	370
0515	G	515	477
0601		601	515
0720		720	560
0760		760	600
0795	H	795	637
0877		877	715
1062		1062	855
1141		1141	943

AFW500C series inverter rated output current (A)			
Code	Cabinet Size	Power source voltage 380-480V, 3 phases	
		HD (Heavy Duty)	
02P6	A	2.6	
04P3		4.3	
06P5		6.5	
10P0		10	
14P0		14	
16P0	B	16	
24P0		24	
31P0		31	
39P0	C	39	
49P0		49	

AFW700C series inverter rated output current (A)			
Code	Cabinet Size	Power source voltage 380-460V, 3 phases	
		ND (Normal Duty)	HD (Heavy Duty)
03P6	A	3.6	
05P0		5	
07P0		7	
10P0		10	
13P5		13.5	
17P0	B	17	
24P0		24	
31P0		31	
38P0	C	38	
45P0		45	
58P5		58.5	
70P5	D	70.5	
88P0		88	
0105	E	105	
0142		142	
0180		180	
0211		211	
0211		211	

### 4 - Number of input power phases

B	Single/three phases power supply (upcoming)
S	Single phase power supply (upcoming)
T	Three phases power supply

### 5 - Input power supply voltage

4	380-460/480V
---	--------------

### 6 - Option kits

S	Standard
0	With Options

### 7 - Protection degree

4	IP42
5	IP54

### 8 - Option Code

Further details on page 12 and 13	
-----------------------------------	--

### 9 - Painting

Standard: RAL7035	
-------------------	--

### 10 - End Code

Z	End of the code
---	-----------------

## Technical Specifications

Power source	Type (AFW11C)	Normal duty (ND)			Heavy duty (HD)			Internal dynamic braking (IGBT)	Internal RFI filter
		380-415V		440-480V	380-415V		440-480V		
		50Hz	60Hz		50Hz	60Hz			
A		kW	HP	A	kW	HP			
380-480V 3φ	AFW11C0003T4	3.6	1.5	2	3.6	1.5	2	Standard	Optional
	AFW11C0005T4	5	2.2	3	5	2.2	3		
	AFW11C0007T4	7	3	4	5.5	2.2	3		
	AFW11C0010T4	10	4	7.5	10	4	7.5		
	AFW11C0013T4	13.5	5.5	10	11	5.5	7.5		
	AFW11C0017T4	17	7.5	12.5	13.5	5.5	10		
	AFW11C0024T4	24	11	15	19	9.2	12.5		
	AFW11C0031T4	31	15	20	25	11	15		
	AFW11C0038T4	38	18.5	30	33	15	25		
	AFW11C0045T4	45	22	30	38	18.5	30		
	AFW11C0058T4	58.5	30	40	47	22	30		
	AFW11C0070T4	70.5	37	50	61	30	50		
	AFW11C0088T4	88	45	75	73	37	60		
	AFW11C0105T4	105	55	75	88	45	75		
	AFW11C0142T4	142	75	100	115	55	75		
	AFW11C0180T4	180	90	150	142	75	100		
	AFW11C0211T4	211	110	175	180	90	150		
	AFW11C0242T4	242	132	200	211	110	150		
	AFW11C0312T4	312	160	250	242	132	200		
	AFW11C0370T4	370	200	300	312	160	250		
	AFW11C0477T4	477	250	400	370	200	300		
	AFW11C0515T4	515	280	400	477	250	400		
	AFW11C0601T4	601	315	500	515	280	400		
	AFW11C0720T4	720	370	600	560	300	450		
	AFW11C0795T4	795	450	680	637	355	550		
AFW11C0877T4	877	500	750	715	400	610			
AFW11C1062T4	1062	560	850	855	450	680			
AFW11C1141T4	1141	630	970	943	500	750			

Power source	Type (AFW500C)	Heavy duty (HD) (standard)			Internal dynamic braking (IGBT)	Internal RFI filter
		380-415V		440-480V		
		50Hz	60Hz			
A		kW	HP			
380-480V 3φ	AFW500C02P6T4	2.6	1.1	1.5	Standard	Optional
	AFW500C04P3T4	4.3	1.5	2		
	AFW500C06P5T4	6.5	3	4		
	AFW500C10P0T4	10	4	5.5		
	AFW500C14P0T4	14	5.5	7.5		
	AFW500C16P0T4	16	7.5	10		
	AFW500C24P0T4	24	11	15		
	AFW500C31P0T4	31	15	20		
	AFW500C39P0T4	39	18.5	25		
	AFW500C49P0T4	49	22	30		

Power source	Type (AFW700C)	Normal duty (ND)			Heavy duty (HD)			Internal dynamic braking (IGBT)	Internal RFI filter
		380-415V		440-480V	380-415V		440-480V		
		50Hz	60Hz		50Hz	60Hz			
A		kW	HP	A	kW	HP			
380-480V 3φ	AFW700C03P6T4	3.6	1.5	2	3.6	1.5	2	Standard	Optional
	AFW700C05P0T4	5	2.2	3	5	2.2	3		
	AFW700C07P0T4	7	3	4	5.5	2.2	3		
	AFW700C10P0T4	10	4	7.5	10	4	7.5		
	AFW700C13P5T4	13.5	5.5	10	11	4	7.5		
	AFW700C17P0T4	17	7.5	12.5	13.5	5.5	10		
	AFW700C24P0T4	24	11	15	19	9.2	12.5		
	AFW700C31P0T4	31	15	20	25	11	15		
	AFW700C38P0T4	38	18.5	30	33	15	25		
	AFW700C45P0T4	45	22	30	38	18.5	30		
	AFW700C58P5T4	58.5	30	40	47	22	30		
	AFW700C70P5T4	70.5	37	50	61	30	50		
	AFW700C88P0T4	88	45	75	73	37	60		
	AFW700C0105T4	105	55	75	88	45	75		
	AFW700C0142T4	142	75	100	115	55	75		
	AFW700C0180T4	180	90	150	142	75	100		
	AFW700C0211T4	211	110	175	180	90	150		

Inverter	CFW11 / CFW500 / CFW700
Power source	380-480 Vac (+10%-15%)
Ferquency	50-60Hz (+/-2%_48-62Hz)
Control voltage	220 VAC or 24 VDC
Cabinet painting color	Standard: RAL7035
Bracket	Galvanize
Cabinet protection degree	IP44, IP54, IP55
Temperature	Maximum 40°C
Humidity	5-90%, without condensation
Altitude	0-1000m
Installation Environment	Indoor
Human-machine interface(HMI)	Installed on cabinet's door (IP54)
Standards	IEC 61439-1

## Options

### 1 - Plug-in Module

CFW11 series					
Options	Code	Name	Description	Slot	
I/O expansion	+H101	IOA-01	1 14-bit analog input in voltage or current; 2 digital inputs 2 14-bit analog outputs in voltage or current; 2 open collector digital outputs	1	
	+H102	IOB-01	2 isolated 12-bit analog inputs; 2 digital inputs 2 isolated 11-bit analog outputs in voltage or current; 2 open collector digital outputs	1	
	+H103	IOC-01	8 digital inputs; 4 digital outputs	1	
	+H104	IOC-02	8 digital inputs; 8 open collector digital outputs	1	
Temperature transducers	+H105	IOE-01	5 PTC type temperature sensor inputs	1	
	+H106	IOE-02	5 Pt-100 type temperature sensor inputs	1	
	+H107	IOE-03	5 KTY84 type temperature sensor inputs	1	
Interface with encoder	+H111	ENC-01	Incremental encoder module; 5 to 12 V dc (internal power supply); 100kHz With encoder signal repeater (external power supply needed)	2	
	+H112	ENC-02	Incremental encoder module; 5 to 12 V dc (internal power supply); 100kHz	2	
Communication	+H121	RS485-01	RS485 serial communication module (Modbus-RTU and BACnet)	3	
	+H122	RS232-01	RS232C serial communication module (Modbus-RTU)	3	
	+H123	RS232-02	RS232C serial communication module,with micro controller flash programming dip-switch	3	
	+H124	CAN/RS485-01	CAN/RS485 interface module (CANopen, DeviceNet, Modbus-RTU and BACnet)	3	
	+H125	CAN-01	CAN interface module (CANopen and DeviceNet)	3	
	+H126	Profibus DP-01	Profibus-DP-V1 interface module	3	
	+H127	RS232-05	RS232 interface module (passive) (Modbus-RTU)	4	
	+H128	RS485-05	RS485 interface module (passive) (Modbus-RTU)	4	
	+H129	PROFDP-05	Profibus-DP interface module	4	
	+H12A	DEVICENET-05	DevideNet interface module	4	
	+H12B	ETHERNET/IP-05	Ethernet/IP interface module	4	
PLC functions	+H131	PLC11-01	Digital inputs	9 bidirecional isolated inputs 24 V	1, 2 and 3
			Digital outputs	3 bidirectional isolated open-collector outputs: 24 V dc, 500 mA	
			Relay outputs	3 outputs NO contacts: 250 V ac, 3 A	
			Encoder interface inputs	2 incremental encoder inputs 5...12 V dc, 500 mA (internal power supply)	
			RS485 interface	1 RS485 port (Modbus-RTU available)	
			CANopen interface	1 CAN port (CANopen and DeviceNet available)	
			Analog outputs	1 differential input: -10...+10 V dc / 0...20 mA, 14 bits	
	+H132	PLC11-02	Digital inputs	4 bidirecional isolated inputs 24 V	1, 2 and 3
			Digital outputs	3 bidirectional isolated open-collector outputs: 24 V dc, 500 mA	
			Relay outputs	1 outputs NO contacts: 250 V ac, 3 A	
			Encoder interface inputs	2 incremental encoder inputs 5...12 V dc, 500 mA (internal power supply)	
			RS485 interface	1 RS485 port (Modbus-RTU available)	
			CANopen interface	1 CAN port (CANopen and DeviceNet available)	
			Analog inputs	2 analog outputs: -10...+10 V dc / 0...20 mA, 12 bits	

Note: CFW11 has 4 slots for expansion, and 4 socket modules can be expanded at the same time.

CFW500 series			
Options	Code	Name	Description
I/O expansion	+H500		Without plug-in module
	+H501	CFW500-IO5	Standard plug-in module (included in the version with plug-in module)
	+H502	CFW500-IOD	Digital input and output (I/O) expansion plug-in module
	+H503	CFW500-IOAD	Digital and analog input and output (I/O) expansion plug-in module
	+H504	CFW500-IOR	Relay output expansion plug-in module
Functionality expansion	+H511	CFW500-ENC	Plug-in module with encoder input
	+H512	CFW500-CUSB	Plug-in module with USB port
Communication	+H521	CFW500-CCAN	CAN communication plug-in module (CANopen/DeviceNet)
	+H522	CFW500-CRS232	RS232 communication plug-in module
	+H523	CFW500-CRS485	RS485 communication plug-in module
	+H524	CFW500-CPDP	Profibus-DP communication plug-in module
	+H525	CFW500-CETH-IP	EtherNet-IP communication plug-in module
	+H526	CFW500-CEMB-TCP	Modbus-TCP communication plug-in module
	+H527	CFW500-CEPN-IO	Profinet IO communication plug-in module

Note: CFW500 can only be configured with one plug-in module. The default standard plug-in module is + H501. If no plug-in module is needed, please specify the model + H500.

Plug-in module	Functions															
	Inputs		Outputs			USB port	Input for Encoder	Fieldbus networks							Supply	
	Digital	Analog	Analog	Digital relay	Digital transistor			CANopen DeviceNet	RS232	RS485	Profibus-DP	Ethernet-IP	Ethernet Modbus-TCP	Profinet-IO	10V	24V
CFW500-IO5	4	1	1	1	1	-	-	-	-	1	-	-	-	-	1	1
CFW500-IOD	8	1	1	1	4	-	-	-	-	1	-	-	-	-	1	1
CFW500-IOAD	6	3	2	1	3	-	-	-	-	1	-	-	-	-	1	1
CFW500-IOR	5	1	1	4	1	-	-	-	-	1	-	-	-	-	1	1
CFW500-ENC	5	1	1	4	1	-	1	-	-	1	-	-	-	-	1	1
CFW500-CUSB	4	1	1	1	1	1	-	-	-	1	-	-	-	-	1	1
CFW500-CCAN	2	1	1	1	1	-	-	1	-	1	-	-	-	-	1	-
CFW500-CRS232	2	1	1	1	1	-	-	-	1	1	-	-	-	-	-	1
CFW500-CRS485	4	2	1	2	1	-	-	-	-	2	-	-	-	-	1	1
CFW500-CPDP	2	1	1	1	1	-	-	-	-	1	1	-	-	-	-	1
CFW500-CETH-IP	2	1	1	1	1	-	-	-	-	1	-	1	-	-	-	1
CFW500-CEMB-TCP	2	1	1	1	1	-	-	-	-	1	-	-	1	-	-	1
CFW500-CEPN-IO	2	1	1	1	1	-	-	-	-	1	-	-	-	1	-	1

Note: CFW500 Configuration of the Plug-in Module

CFW700 series		
Code	Name	Description
+H701	CAN-01	CAN communication plug-in module (CAN open and DeviceNet)
+H702	Profibus DP-01	Profibus-DP communication plug-in module

Note: CFW700 can only expend 1 socket modules.

### 2 - Braking IGBT

Blank	Configure of internal dynamic braking(IGBT) at standard time
+DB	Configure of internal dynamic braking(IGBT) at option time

### 3 - RFI filter

Blank	Configure of internal RFI filter at standard time
+C3	Configure of internal RFI filter (class 3)at option time
+C2	Configure of internal RFI filter (class 2)at option time(upcoming)

### 4 - Safety Stop

Code	CFW11	CFW500	CFW700
+Y1	Optional	Non Optional	Optional

### 5 - External power supply 24Vdc

Code	CFW11	CFW500	CFW700
+W1	Optional	Non Optional	Optional

Note: This power supply is used for control panel and HMI. When this configuration is available, we can still operate the HMI after the main power supply powered off.

### 6 - Other Options

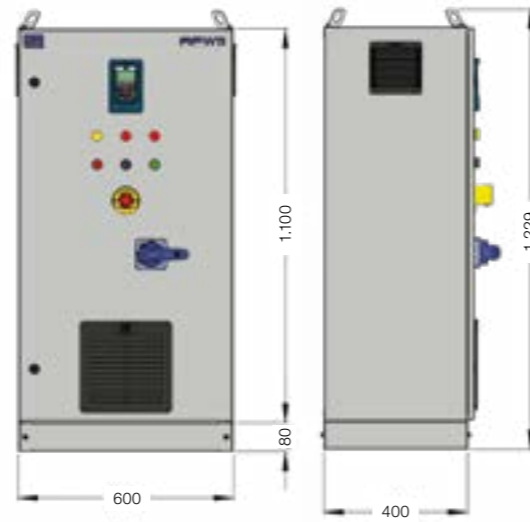
- Braking resistor (refer to the user manual of Frequency Inverter);
- Input reactor (refer to the user manual of Frequency Inverter);
- Output reactor(refer to the user manual of Frequency Inverter);
- Special soft function (Allowing to add custom function by programming, please contact WEG);
- Position and direction of incoming cable (Please contact WEG).

## Dimensions

Cabinet size A and B

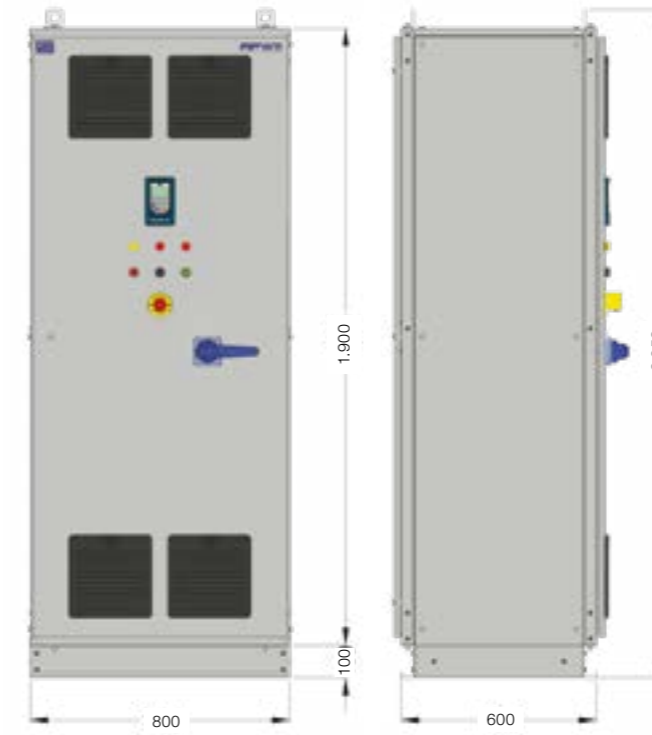


Cabinet size C



## Dimensions

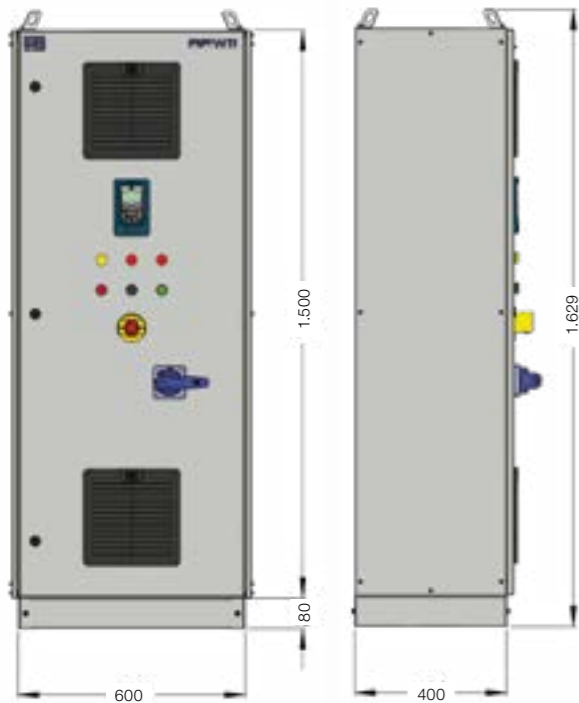
Cabinet size F



Cabinet size G



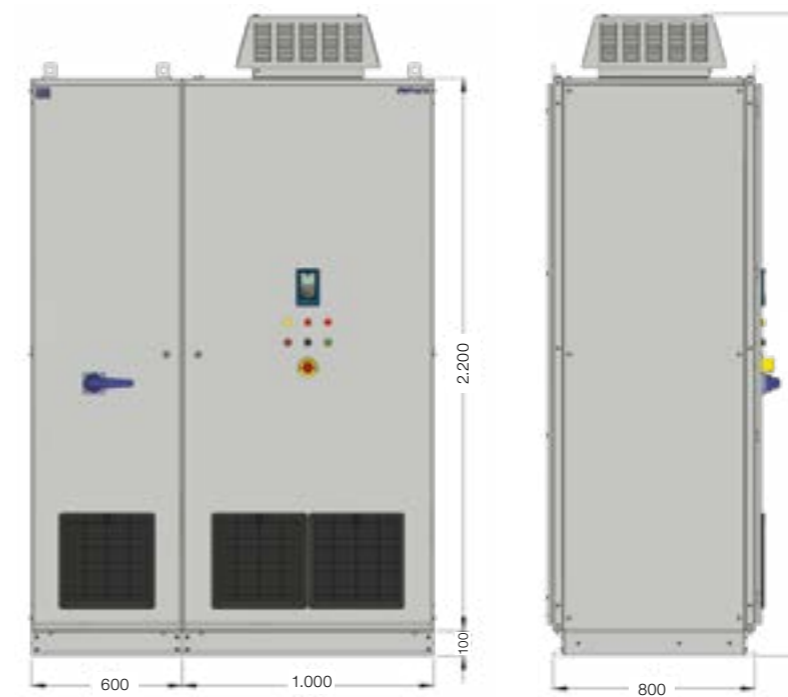
Cabinet size D



Cabinet size E



Cabinet size H





# WEG Worldwide Operations

## ARGENTINA

San Francisco - Cordoba  
Phone: +54 3564 421484  
[info-ar@weg.net](mailto:info-ar@weg.net)

Cordoba - Cordoba  
Phone: +54 3514 641366  
[weg-morbe@weg.com.ar](mailto:weg-morbe@weg.com.ar)

Buenos Aires  
Phone: +54 1142 998000  
[ventas@pulverlux.com.ar](mailto:ventas@pulverlux.com.ar)

## AUSTRALIA

Scoresby - Victoria  
Phone: +61 3 97654600  
[info-au@weg.net](mailto:info-au@weg.net)

## AUSTRIA

Markt Piesting - Wiener  
Neustadt-Land  
Phone: +43 2 633 4040  
[watt@wattdrive.com](mailto:watt@wattdrive.com)

Vienna  
Phone: +43 1 796 2048  
[wtr@weg.net](mailto:wtr@weg.net)

## BELGIUM

Nivelles - Belgium  
Phone: +32 67 888420  
[info-be@weg.net](mailto:info-be@weg.net)

## BRAZIL

Jaraguá do Sul - Santa Catarina  
Phone: +55 47 32764000  
[info-br@weg.net](mailto:info-br@weg.net)

## CHILE

La Reina - Santiago  
Phone: +56 2 27848900  
[info-cl@weg.net](mailto:info-cl@weg.net)

## CHINA

Nantong - Jiangsu  
Phone: +86 513 85989333  
[info-cn@weg.net](mailto:info-cn@weg.net)

Changzhou - Jiangsu  
Phone: +86 519 88067692  
[info-cn@weg.net](mailto:info-cn@weg.net)

Rugao - Jiangsu  
Phone: +86 513 80672011  
[zhuhua@weg.net](mailto:zhuhua@weg.net)

## COLOMBIA

San Cayetano - Bogota  
Phone: +57 1 4160166  
[info-co@weg.net](mailto:info-co@weg.net)

Sabaneta - Antioquia  
Phone: +57 4 4449277  
[info-co@weg.net](mailto:info-co@weg.net)

## ECUADOR

El Batan - Quito  
Phone: +593 2 5144339  
[wegecuador@weg.net](mailto:wegecuador@weg.net)

## FRANCE

Saint-Quentin-Fallavier - Isère  
Phone: +33 4 74991135  
[info-fr@weg.net](mailto:info-fr@weg.net)

## GERMANY

Türnich - Kerpen  
Phone: +49 2237 92910  
[info-de@weg.net](mailto:info-de@weg.net)

Balingen - Baden-Württemberg  
Phone: +49 7433 90410  
[info@weg-antriebe.de](mailto:info@weg-antriebe.de)

Homberg (Efze) - Hesse  
Phone: +49 5681 99520  
[info@akh-antriebstechnik.de](mailto:info@akh-antriebstechnik.de)

## GHANA

Accra  
Phone: +233 30 2766490  
[ghana@zestweg.com](mailto:ghana@zestweg.com)

## INDIA

Bangalore - Karnataka  
Phone: +91 080 46437450  
[info-in@weg.net](mailto:info-in@weg.net)

Hosur - Tamil Nadu  
Phone: +91 4344 301577  
[info-in@weg.net](mailto:info-in@weg.net)

## ITALY

Cinisello Balsamo - Milano  
Phone: +39 2 61293535  
[info-it@weg.net](mailto:info-it@weg.net)

## JAPAN

Yokohama - Kanagawa  
Phone: +81 45 5503030  
[info-jp@weg.net](mailto:info-jp@weg.net)

## MALAYSIA

Shah Alam - Selangor  
Phone: +60 3 78591626  
[info@wattdrive.com.my](mailto:info@wattdrive.com.my)

## MEXICO

Huehuetoca - Mexico  
Phone: +52 55 53214275  
[info-mx@weg.net](mailto:info-mx@weg.net)

Tizayuca - Hidalgo  
Phone: +52 77 97963790  
[info-mx@weg.net](mailto:info-mx@weg.net)

## NETHERLANDS

Oldenzaal - Overijssel  
Phone: +31 541 571080  
[info-nl@weg.net](mailto:info-nl@weg.net)

## PERU

La Victoria - Lima  
Phone: +51 1 2097600  
[info-pe@weg.net](mailto:info-pe@weg.net)

## PORTUGAL

Maia - Porto  
Phone: +351 22 9477700  
[info-pt@weg.net](mailto:info-pt@weg.net)

## RUSSIA and CIS

Saint Petersburg  
Phone: +7 812 363 2172  
[sales-wes@weg.net](mailto:sales-wes@weg.net)

## SOUTH AFRICA

Johannesburg  
Phone: +27 (0) 11 7236000  
[info@zestweg.com](mailto:info@zestweg.com)

Cape Town  
Phone: +27 (0) 21 507 7200  
[gentsets@zestweg.com](mailto:gentsets@zestweg.com)

Heidelberg  
Phone: +27 (0) 16 349 2683/4/5  
[wta@zestweg.com](mailto:wta@zestweg.com)

## SPAIN

Coslada - Madrid  
Phone: +34 91 6553008  
[info-es@weg.net](mailto:info-es@weg.net)

Valencia  
Phone: +34 96 1379296  
[info@autrial.es](mailto:info@autrial.es)

## SINGAPORE

Singapore  
Phone: +65 68589081  
[info-sg@weg.net](mailto:info-sg@weg.net)

Singapore  
Phone: +65 68622220  
[info-sg@weg.net](mailto:info-sg@weg.net)

## SCANDINAVIA

Mölnlycke - Sweden  
Phone: +46 31 888000  
[info-se@weg.net](mailto:info-se@weg.net)

## UK

Redditch - Worcestershire  
Phone: +44 1527 513800  
[info-uk@weg.net](mailto:info-uk@weg.net)

## UNITED ARAB EMIRATES

Jebel Ali - Dubai  
Phone: +971 4 8130800  
[info-ae@weg.net](mailto:info-ae@weg.net)

## USA

Duluth - Georgia  
Phone: +1 678 2492000  
[info-us@weg.net](mailto:info-us@weg.net)

Bluffton - Indiana  
Phone: +1 800 5798527  
[info-us@weg.net](mailto:info-us@weg.net)

Minneapolis - Minnesota  
Phone: +1 612 3788000  
[info-us@weg.net](mailto:info-us@weg.net)

Washington - Missouri  
Phone: +1 636-239-9300  
[wegwill@weg.net](mailto:wegwill@weg.net)

## VENEZUELA

Valencia - Carabobo  
Phone: +58 241 8210582  
[info-ve@weg.net](mailto:info-ve@weg.net)

For those countries where there is not a WEG own operation, find our local distributor at [www.weg.net](http://www.weg.net).



WEG (Nantong) Electric Motor Mfg. CO.,Ltd  
#128, Xinkai South Road, NETDA,  
Nantong - Jiang Su - China  
Phone: +86 513 8598 9333  
[info-cn@weg.net](mailto:info-cn@weg.net)  
[www.weg.net](http://www.weg.net)

