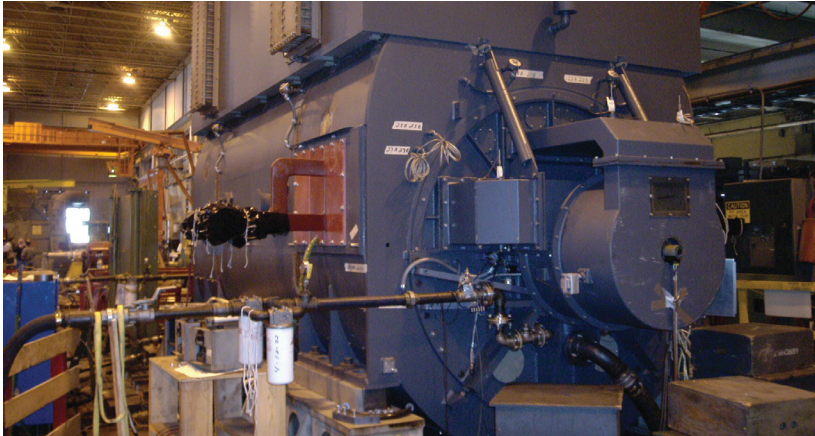


2-Pole Turbine Generators

Factory Testing



A comprehensive factory testing schedule is carried out on all generators to ensure further enhanced reliability. Full load current and voltage testing is included.



All generators are fully assembled with their own bearings and vibration probes. Testing is performed at rated speed and voltage as required using a shop driver and lube oil system. Vibration probes are monitored continuously using a data acquisition system. Temperatures and pressures are monitored as well, including lube oil, bearing metal, and cooling air/ water. Tests are specified in IEEE C50.13 and Electric Machinery standards and performed by methods in IEEE 115.

Test	All Machines	Optional
Resistance of armature and field windings	X	
Dielectric test of armature and field windings	X	
Voltage balance	X	
Phase sequence	X	
Mechanical balance (vibration)	X	
Open circuit saturation curve	X	
Overspeed	X	
Rotor impedance	X	
Measurement of insulation resistance of armature and field windings	X	
Shorted field turns check	X	
Accessories/detectors test	X	
Polarization index	X	
Bearing inspection	X	
Exciter operation	X	
Measurement of bearing insulation resistance	X	
Short circuit saturation curve		X
Harmonic analysis and measurement of TIF		X
Heat runs		X
Short circuit tests at reduced voltage to determine reactances and time		X
Measurement of segregated losses		X
Noise test		X

For more information, please contact:

E-mail: service-em@weg.net

Phone: 24 Hour Customer Support: +1 (612) 247-9232



Transforming Energy into Solutions www.weg.net/us

ELECTRIC MACHINERY COMPANY

800 Central Avenue NE
Minneapolis, MN 55413
United States

Tel: +1 (612) 378 8000

Fax: +1 (612) 378 8051

www.electricmachinery.com