

# ROTATING ELECTRICAL MACHINES TEST LABORATORIES

Quality assurance for your product



Motors | Automation | Energy | Transmission & Distribution | Coatings

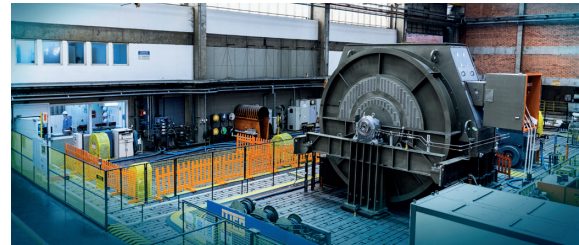
## Rotating Electrical Machines Test Laboratories

Test laboratories of WEG are equipped with high technology devices and systems. Meets or exceeds: IEC, IEEE, NEMA, JEC and API standards.

### Tests Performed

#### Routine

- Cold winding resistance measurement
- Secondary voltage
- No load
- Hi-pot
- Insulation resistance



20 MVA test lab

#### Type

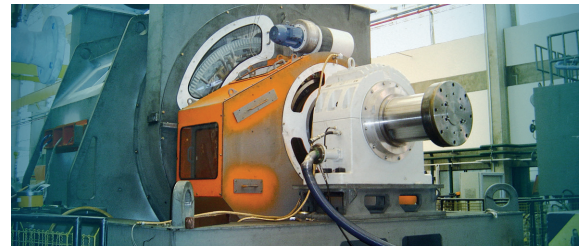
- Cold winding resistance measurement
- Secondary voltage
- Locked rotor
- Temperature rise
- Load
- Breakdown
- No load
- Hi-pot
- Insulation resistance
- Checking of accessories



20 MVA test lab monitoring room

#### Special

- Vibration
- Vibration per API 541 (ADRE Bently Nevada System)
- Noise level
- Bearing insulation resistance
- Shaft voltage
- Overspeed
- Other tests may be performed under customer's request



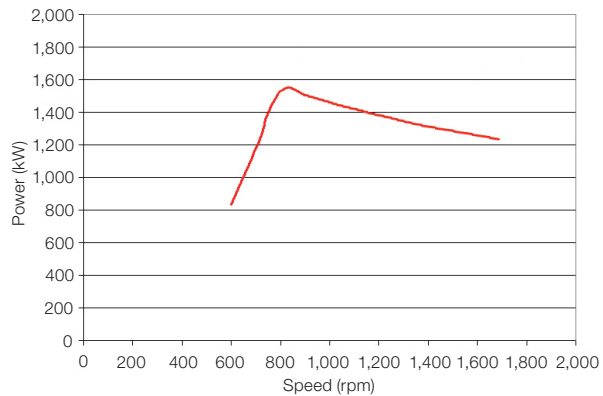
Testing engines of 36,000 HP, 12 poles, 11 kV, 50 Hz, frame 1,600



## Test Lab Capacity

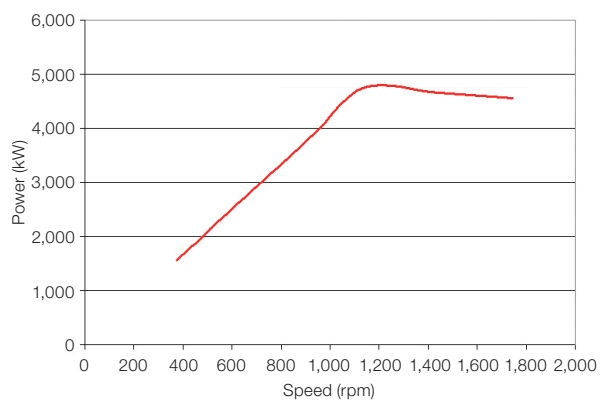
### 5,000 kVA Test Lab

Voltage: 220 V to 13,800 V  
 Frequency: 30 Hz to 60 Hz  
 Testing capacity: 5,000 kVA  
 Full load power: see graphic at right  
 Dynamometer: 1 x DC 1.5 MW



### 10,000 kVA Test Lab

Voltage: 2,300 V to 13,800 V  
 Frequency: 30 Hz to 60 Hz  
 Testing capacity: 10,000 kVA  
 Full load power: see graphic at right  
 Dynamometer: 1 x AC 5 MW



### 20,000 kVA Test Lab

Voltage: 2,300 V to 13,800 V  
 Frequency: 30 Hz to 60 Hz  
 Testing capacity: 20,000 kVA

Test laboratory of large size machines (20,000 kVA) provide tests using methods such as: Dual-Frequency and Forward Short-Circuit. The WEG's laboratories make part of the program *Client Test Data Program (CTDP)* at UL LLC.

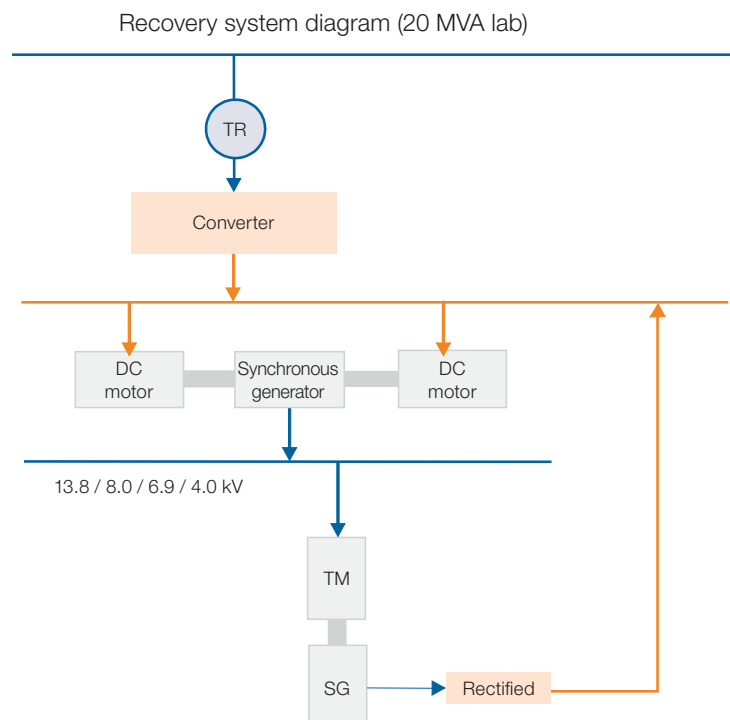
## Energy Conservation

### An Environmentally Friendly Company

WEG is an environmentally friendly company. We are always concerned with the proper management of natural resources, and we make it a point to recycle many of the materials we use in our various industrial processes. Up to 85% of the energy used in the test lab is recovered, which saves energy, and helps to protect the environment.

#### Index

TR - Transformer  
 TM - Test motor  
 SG - Synchronous generator



For WEG's worldwide  
operations visit our website



[www.weg.net](http://www.weg.net)



 +55 47 3276.4000

 [energia@weg.net](mailto:energia@weg.net)

 Jaraguá do Sul - SC - Brazil

Cod: 50022689 | Rev: 03 | Date (m/a): 02/2021.

The values shown are subject to change without prior notice.  
The information contained is reference values.