

# WRAPX

Industrial Motors

Commercial & Appliance  
Motors

Automation

Digital & Systems

Energy

Transmission &  
Distribution

**Coatings**

## Elastomeric Protective Coating



Driving efficiency and sustainability



# Solutions for highly aggressive environments



Coatings for a great variety of applications

In addition to providing protection for machines, equipment and industrial structures, WEG Coatings has solutions to paint and maintain critical areas exposed to bad weather requiring durable and strong protection.



## Elastomeric Coating

Elastomeric coatings are coating materials that have elastic properties, which means they can stretch and deform if stress is applied to them but return to their original shape when the stress is removed.

Elastomeric coatings fall into a class of protection and durability solutions that stand out for their flexibility, resistance and versatility. These coatings offer unique properties that make them ideal for a great variety of industrial applications.

- Excellent chemical and anticorrosion resistance, in addition to great resistance to abrasion and impact with flexibility;
- Solvent-free, fast-drying product that can be applied in high-build coats;
- Products with options for applications with plural component airless equipment and brushes;
- High covering capacity;
- Significantly increases the application productivity.

# Segments served

Among the numerous sectors for which the coating is suitable, we point out below the main areas that can benefit from the advantages of this solution. Our technology provides flexibility and excellent chemical and abrasion resistance, in addition to simplifying and reducing maintenance in highly aggressive areas.



Metal Structures



Floors



Valves and Flanges



Piping

## High resistance

The product protects equipment and metal structures against corrosion, chemical agents and impacts in aggressive environments, such as refineries, chemical industries and processing plants. Elastomeric coatings not only protect against corrosion but also offer abrasion resistance and anti-slip properties, ensuring a safe and durable environment when applied to flooring.

## Great covering

Effective covering of valves, flanges and bolts is essential to maintain the system integrity. Elastomeric coatings provide a reliable and durable barrier. The application of elastomeric coatings to pipelines offers long-lasting protection against corrosion and abrasion. These coatings are essential to maintain the integrity of fluid conveying systems.

# This is WEG

A more SUSTAINABLE tomorrow is what drives us today.

A crucial aspect of the product lines presented in this catalog is the commitment to environmental sustainability. All products are characterized by high solids, which means they contain low volatile solvents (low VOCs). This characteristic is essential to reduce the emission of atmospheric pollutants and minimize environmental impacts.

Each of these products offers unique characteristics to meet your specific covering, protection, sealing and strength requirements. By choosing any of the products, you are making a choice that benefits not only today, but also your future.

Whether you're looking for industrial equipment protection, flange sealing or chemical resistance, our elastomeric coatings are ready to overcome your challenges.



# WRAPX HBD 521

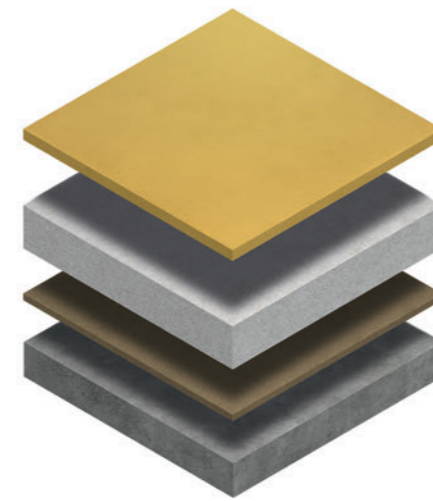
## High-build flexible coating

High-build, polyurethane-based elastomeric direct to metal. Flexible coating with excellent anticorrosion and abrasion resistance.

Recommended as protection for industrial equipment and structures, carbon steel and concrete floors, internal and external painting of pipes, where physical protection with excellent anticorrosive resistance and **quick release for work in a few hours are required.**

- WRAPX HBD 521 is applied using *Airless Plural Component equipment*;
- Applicable in a single, high-build coat of up to 8mm horizontally and up to 2mm vertically;
- It complies with AWWA C-222 standards and GM/MS Directive No. 888 for potability, ensuring quality and conformity;
- It allows the release for traffic and use of equipment and structures in up to 2 hours, depending on their final use and specific application conditions.

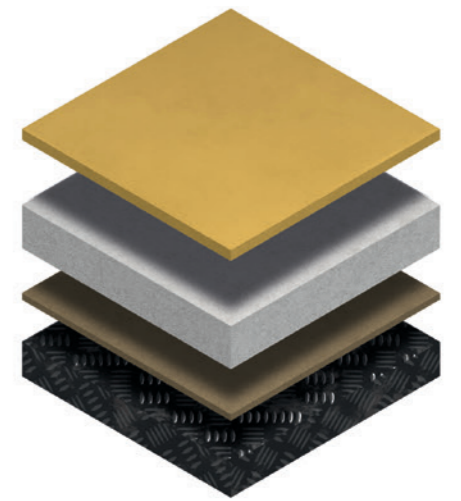
E  
D  
C  
B  
A



### Concrete

- A** Surface preparation.
- B** Application of W-POXI HSS 301 primer.
- C** Application of WRAPX HBD 521.
- D** Application of topcoat accepted.
- E** Particles can be sprinkled over it to create a non-slip floor.

E  
D  
C  
B  
A



### Metal

- A** Surface preparation
- B** Application of W-POXI STP 301 primer.
- C** Application of WRAPX HBD 521.
- D** Application of topcoat accepted.
- E** Particles can be sprinkled over it to create a non-slip floor.

*\*Priming is only necessary in cases where the substrate doesn't have the roughness profile of more than 80 µm required for application.*

Test	Property	WRAPX HBD 521
Hardness	Hardness Shore D	69,1
Traction	Yield Strength (MPa)	21,37
	Deformation at Rupture (%)	20,20
Tearing	Maximum load (N)	136,15
	Tear resistance (kN/m)	48,39

- Tear test - ASTM D624:2012
- Traction test - ASTM D412-16 (2021)



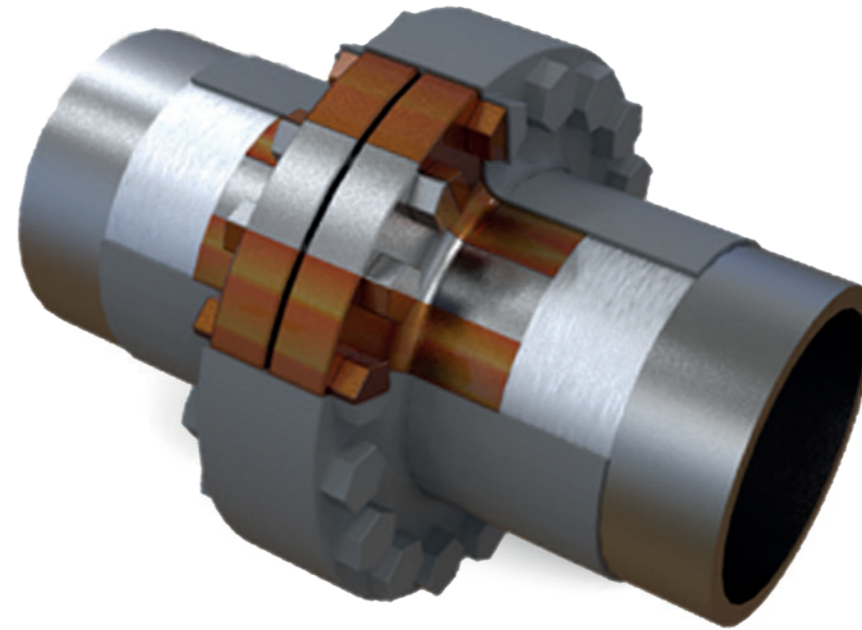


Application of waxy film

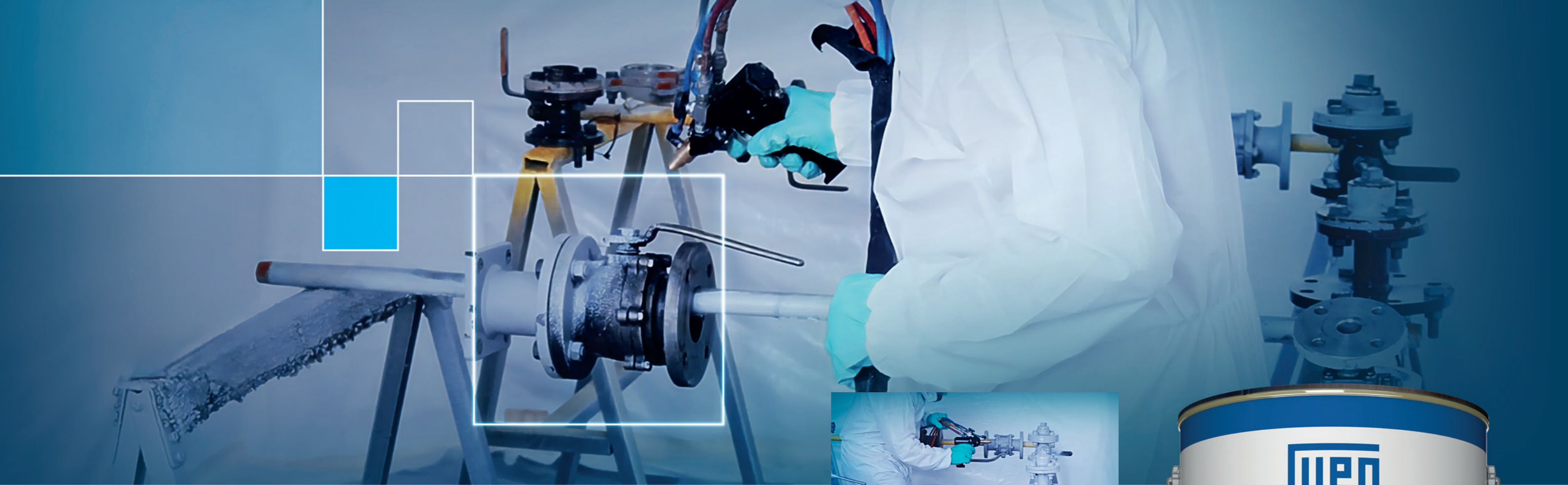
# WRAPX HBD 421

## Coating for preservation of critical areas

Polyurethane-based elastomeric product applicable in high build. Flexible coating with excellent anticorrosion resistance. It can be used on flanges, valves, of all diameters and screw seals, and it can be applied on a protective waxy film to promote **easy removal when access for maintenance is necessary**.



- Polyurethane-based elastomeric product applicable in high build. Flexible coating with excellent anticorrosion resistance. It can be used on flanges, valves of all diameters and screw seals, and it can be applied on a protective waxy film to promote easy removal when access for maintenance is necessary.
- Applicable in thicknesses from 200 to 1.000 mm, offering flexible protection;
- It offers resistance to abrasion and chemicals, ensuring long-lasting protection;
- For maintenance of valves and flanges;
- Brush application solution;
- It allows the application of topcoat;
- It provides high retention on edges and weld beads.



# WRAPX EVD 473

Coating for preservation of critical areas

**Cold polyurea-based elastomeric** product is designed to provide robust protection against chemical agents and corrosion in aggressive environments. This product is highly flexible, making it an exceptional choice for a variety of applications.

Its formulation allows high build application in a single coat, significantly increasing application productivity. Product applied by *airless plural component* method.



- It provides protection against corrosion and wear, extending the service life of industrial assets;
- Its flexibility enables it to follow structural movements, ensuring long-lasting protection;
- For maintenance of valves, flanges and screws;
- Drying: handling in 40 minutes.

The scope of WEG Group solutions is not limited to the products and solutions presented in this brochure.

**To know our portfolio,  
contact us.**

**For WEG's worldwide  
operations visit our website**




**www.weg.net**


**f i wegcoatings**

**COATINGS**



 +55 (47) 3276.4000

 tintas@weg.net

 **Guaramirim - SC - Brazil** ☎ +55 (47) 3276.4000

**Mauá - SP - Brazil** ☎ +55 (11) 4547.6100

**Cabo de Santo Agostinho - PE - Brazil** ☎ +55 (81) 3512.3000

**Betim - MG - Brazil** ☎ +55 (31) 3268.0686

**Buenos Aires - Argentina** ☎ +54 (11) 4299.8000

**Atotonilco de Tula - Mexico** ☎ +52 (55) 5321.4231

**Atlanta - USA** ☎ 1-800-ASK-4WEG