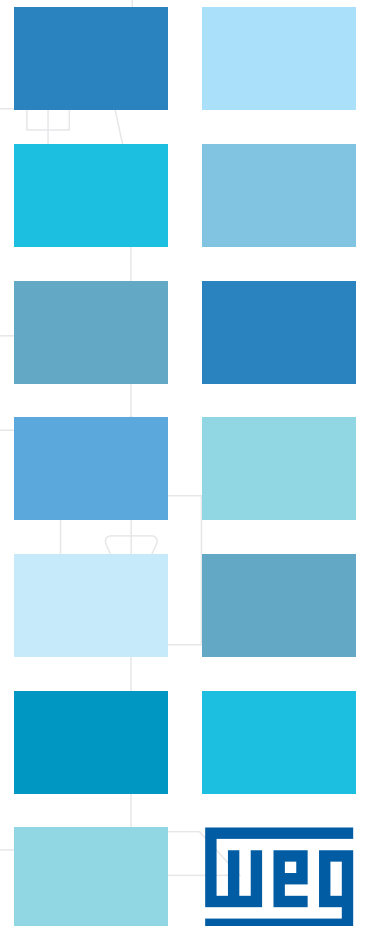
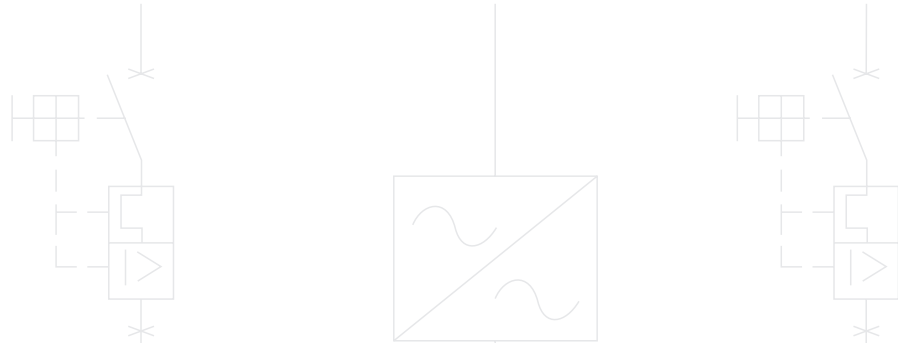


# In-Line Extra Thrust

## LP Flange

- Extra capacity to support axial loads
- Meets API 610 motor requirement



USA318



## In-Line Extra Thrust

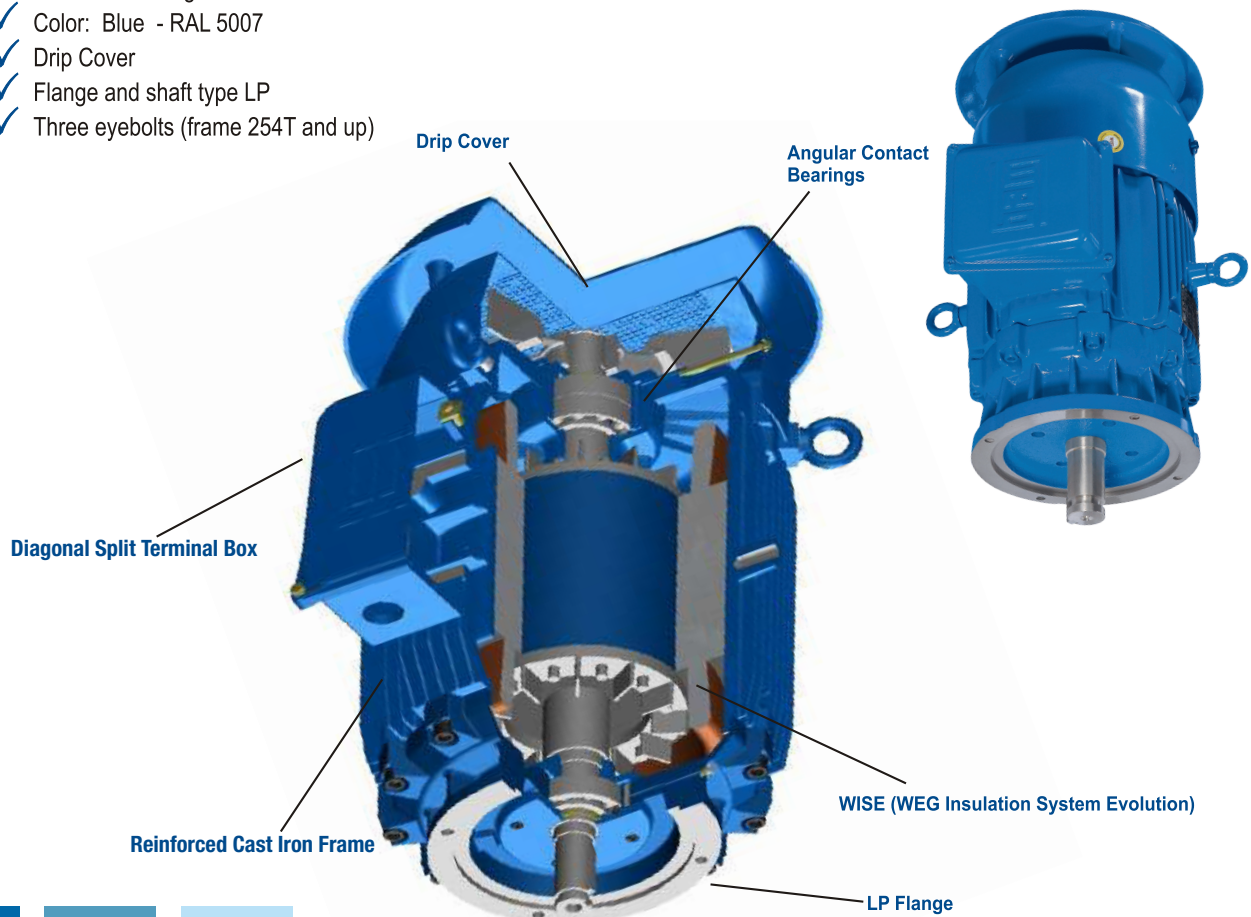
This line is designed for vertical motor applications such as chemical in-line process pumps, condensate pumps, turbine pumps, and similar applications in industrial environments. Meets the requirements of the Oil and Gas market.

### Standard Features

- ✓ High Efficiency Motor (EPAAct)
- ✓ Three-phase - 2, 4, 6, and 8 poles - 60Hz
- ✓ Voltage: 208-230/460V or 575V
- ✓ Service factor 1.25 up to 100HP  
1.15 from 125 HP and up.
- ✓ Insulation Class "F" with 80°C rise at full load
- ✓ FC200 Cast Iron Frame, Brackets, and Conduit Box
- ✓ Frame Size: 182/4 up to 444/5T
- ✓ Totally Enclosed Fan Cooled - TEFC (IP55)
- ✓ Run out according to API 610, section III (3.1.8) 0.025 [mm]
- ✓ Concentricity according to API 610, Section III (3.1.8) 0.1 [mm]
- ✓ Perpendicularity according to API 610, Section III (3.1.8) 0.025 [mm]
- ✓ Axial float according to API 610, Section III (3.1.8) 0.125 [mm]
- ✓ Dual 7300 series bearings on NDE supports axial thrust.
- ✓ D.E. Ball Bearing
- ✓ Color: Blue - RAL 5007
- ✓ Drip Cover
- ✓ Flange and shaft type LP
- ✓ Three eyebolts (frame 254T and up)

### Optional Features

- ✓ Special voltages
- ✓ Special Paint
- ✓ Thermal protection
- ✓ Space heaters
- ✓ Additional terminal box
- ✓ Class "H" insulation
- ✓ Special grease for high or low temperatures
- ✓ IP56 Degree of Protection
- ✓ Flange and shaft type VP and HP
- ✓ Run out values, perpendicularity and Concentricity according to NEMA
- ✓ Other option available
- ✓ NEMA Premium Efficiency



# In-Line Extra Thrust

## Electrical Data



HP	kW	Frame	RPM	Full Load AMPS 460V	Full Load AMPS 575V	Locked Rotor Code	Locked Rotor Torque	Break-Down Torque	Efficiency FL	Power Factor	Service Factor FL	Moment of Inertia Lb Ft <sup>2</sup>	Allowable locked rotor time Hot/Cold(s)	Approx. Weight Lbs	Sound db (A) 3'
1	0.75	182LP	875	2.3	1.84	M	3	3.5	74	0.55	1.25	0.39914	40/88	127	50
1.5	1.1	182LP	1165	2.4	1.89	L	2.9	3.6	85.5	0.68	1.25	0.39914	36/79	127	52
		184LP	860	2.7	2.17	J	2.5	2.6	77	0.66	1.25	0.44375	32/70	143	50
2	1.5	184LP	1165	3.2	2.56	L	3	3	86.5	0.68	1.25	0.53226	35/77	148	52
		213LP	870	3.5	2.77	L	2.4	2.9	82.5	0.66	1.25	1.19101	43/95	225	52
3	2.2	182LP	3500	3.7	2.97	K	2.5	4	85.5	0.87	1.25	0.15425	23/51	141	69
		182LP	1765	3.9	3.12	K	2.3	3.2	87.5	0.81	1.25	0.28595	31/68	127	56
		213LP	1170	4.3	3.4	J	2.2	2.5	87.5	0.74	1.25	1.01185	59/130	214	55
		215LP	860	4.4	3.51	J	2	2.1	84	0.75	1.25	1.78616	30/66	240	52
5	3.7	184LP	3480	5.9	4.72	J	2.3	3.3	87.5	0.9	1.25	0.19981	23/51	146	69
		184LP	1750	6.5	5.17	J	2.1	3	87.5	0.82	1.25	0.38134	21/46	146	56
		215LP	1160	6.8	5.44	H	1.8	2.1	87.5	0.78	1.25	1.47174	49/108	254	55
		254LP	875	7.2	5.76	H	2	2.8	85.5	0.68	1.25	2.89719	37/81	320	54
7.5	5.5	213LP	3515	8.7	6.93	H	2.2	3.5	88.5	0.9	1.25	0.4879	26/57	217	72
		213LP	1765	9.5	7.62	H	2	2.6	89.5	0.81	1.25	1.01185	21/46	214	58
		254LP	1170	9.5	7.62	H	2.3	3.1	89.5	0.81	1.25	2.55643	29/64	287	59
10	7.5	256LP	875	11.2	8.99	G	1.9	2.7	86.5	0.71	1.25	3.40858	41/90	375	54
		215LP	3500	11.7	9.35	H	2.2	2.8	89.5	0.9	1.25	0.57665	20/44	225	72
		215LP	1760	12.8	10.2	H	2	2.6	90.2	0.82	1.25	1.37989	17/37	244	58
		256LP	1175	13.4	10.7	J	2.3	2.9	89.5	0.79	1.25	0.28972	22/48	331	59
15	11	284LP	885	13.6	10.89	H	2.5	2.4	88.5	0.78	1.25	7.19897	53/117	487	54
		254LP	3520	17.0	13.6	G	2	2.7	90.2	0.9	1.25	1.2565	28/62	358	75
		254LP	1760	17.9	14.29	G	2.5	2.5	91	0.85	1.25	2.38178	27/59	335	69
		284LP	1180	17.3	13.8	G	2.3	2.5	91.0	0.88	1.25	7.19921	21/46	487	59
20	15	286LP	880	19.0	15.2	G	2.4	2.3	88.5	0.82	1.25	8.18092	37/81	518	54
		256LP	3520	23.3	18.6	G	2	2.5	90.2	0.9	1.25	1.53581	21/46	375	75
		256LP	1755	24.4	19.49	G	2.4	2.4	91	0.85	1.25	2.85804	18/40	394	69
		286LP	1175	23.5	18.8	G	2.3	2.5	91.0	0.88	1.25	8.18092	31/68	525	59
25	18.5	324LP	880	36.0	28.8	G	2.2	2.2	89.5	0.75	1.25	9.79052	34/75	657	56
		284LP	3525	29.0	23.2	G	2	2.5	91	0.88	1.25	2.28947	23/51	455	75
		284LP	1760	29.6	23.69	G	2.2	2.5	92.4	0.85	1.25	4.68264	25/55	487	68
		324LP	1175	29.8	23.8	F	2.2	2.4	91.7	0.85	1.25	10.21624	33/73	666	62
30	22	326LP	880	35.5	28.4	G	2.4	2.4	89.5	0.73	1.25	11.91887	29/64	688	56
		286LP	3520	33.8	27	G	1.9	2.3	91	0.9	1.25	2.82838	19/42	474	75
		286LP	1755	34.4	27.49	G	2.4	2.6	92.4	0.87	1.25	5.32122	22/48	525	68
		326LP	1175	35.4	28.29	G	2.3	2.5	91.7	0.85	1.25	11.91887	27/59	695	62
40	30	364LP	885	38.4	30.69	G	2.2	2.2	91	0.79	1.25	23.45544	48/106	972	60
		324LP	3550	46.1	36.89	G	2.3	2.4	91.7	0.89	1.25	4.8955	36/79	641	81
		324LP	1770	47.6	38.09	G	2.3	2.3	93	0.85	1.25	7.85344	28/62	666	71
		364LP	1175	47.1	37.69	G	2.3	2.3	93	0.86	1.25	23.45544	35/77	983	65
50	37	365LP	885	52.7	42.15	G	2.2	2.2	91	0.79	1.25	29.04006	42/92	1155	60
		326LP	3555	56.5	45.2	G	2.3	2.3	92.4	0.89	1.25	5.32122	33/73	651	81
		326LP	1770	57.8	46.2	G	2.3	2.3	93.6	0.86	1.25	9.16263	25/55	699	71
		365LP	1180	58.1	46.49	G	2.5	2.7	93	0.86	1.25	29.04006	39/86	1169	65
60	45	404LP	885	64.9	51.89	G	2.2	2.1	91.7	0.78	1.25	34.62468	27/59	1125	60
		364LP	3555	69.0	55.2	G	2	2.5	93.0	0.88	1.25	8.51337	61/134	970	85
		364LP	1775	67.0	53.6	G	2	2.3	93.6	0.9	1.25	17.43823	23/51	981	75
		404LP	1180	70.1	56.09	G	2.5	2.7	93.6	0.86	1.25	34.62468	32/70	1195	65
75	55	405LP	885	77.0	61.6	G	1.7	2.1	91.7	0.8	1.25	36.85862	13/29	1257	60
		365LP	3550	82.5	66	G	2	2.6	93	0.9	1.25	10.64196	46/101	1053	85
		365LP	1775	82.4	65.89	G	2.2	2.4	94.1	0.89	1.25	19.9294	22/48	1109	75
		405LP	1175	86.8	69.4	G	2.5	2.6	93.6	0.85	1.25	36.85838	23/51	1257	65
100	75	444LP	890	90.5	72.4	G	1.7	2.1	93	0.82	1.25	73.6254	28/62	1852	63
		405LP	3550	113.0	90.4	G	2	2.4	93.6	0.89	1.25	11.9191	38/84	1125	85
		405LP	1775	114.5	91.6	G	2.1	2.2	94.5	0.87	1.25	27.40293	18/40	1258	75
		444LP	1185	120.5	96.4	G	2.2	2.6	94.1	0.83	1.25	73.6254	29/64	1852	70
125	90	445LP	890	123.4	98.69	G	1.7	2	93	0.82	1.25	87.25972	29/64	2051	63
		444LP	3560	131.3	105	F	2	2.5	94.5	0.91	1.15	27.92309	40/88	1610	86
		444LP	1780	137.5	110	G	2	2.2	94.5	0.87	1.15	45.73008	27/59	1703	76
		445LP	1185	141.3	113	G	2.1	2.3	94.1	0.85	1.15	87.25972	22/48	2051	70
150	110	445LP	3575	160.0	128	G	2	2.5	94.5	0.91	1.15	33.50771	38/84	1902	86
		445LP	1780	167.5	134	G	2.2	2.3	95	0.87	1.15	57.16272	27/59	1665	76

The values shown as subject to change without prior notice.

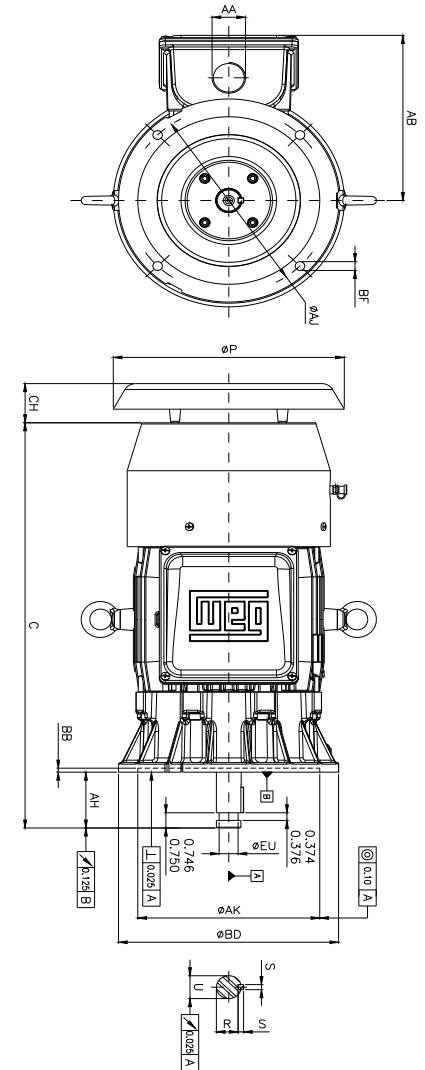
# In-Line Extra Thrust

## Mechanical Data

NEMA FRAME	AH	AK	AJ	BD	BB	BF	EU	ES	U	S	
182 LP	2.750	8.250	9.125	10.000	0.196	0.440	0.875	1.280	1.125	0.250	
184 LP											
213 LP											
215 LP											
254 LP											
256 LP	4.500	13.500	14.750	16.500	0.250	0.687	1.250	1.750	3.150	2.125	0.500
284 LP											
286 LP											
324 LP											
326 LP											
364/5 LP											
404/5 LP											
444/5 LP											

NEMA FRAME	R	P	AB	C	CH	AA	D.E.	O.D.E
182 LP	0.984	10.472	8.228	19.350	1.929	NPT1"	6206	2x7306
184 LP				20.354				
213 LP				21.665				
215 LP	1.406	12.165	9.331	23.161	1.929	NPT1"	6309	2x7306
254 LP				26.705				
256 LP	1.845	13.071	10.000	28.437	2.323	NPT1.1/2"	6309	2x7309
284 LP				29.409				
286 LP				30.906				
324 LP				32.323				
326 LP				33.819				
364/5 LP	1.845	21.417	16.693	35.925	3.583	NPT2"	6212	2x7310
404/5 LP				38.917				
444/5 LP				41.909				
364/5 LP	1.845	21.417	16.693	35.925	3.583	NPT3"	6314	2x7311
404/5 LP				38.917				2x7315
444/5 LP				41.909				2x7311
364/5 LP	1.845	21.417	16.693	35.925	3.583	2xNPT3"	6314	2x7315
404/5 LP				38.917				2x7315
444/5 LP				41.909				2x7315

\* 2 pole motor  
 \* Dimension as per NEMA MG1



## Thrust Capability

Down Thrust Lbf		182LP	184LP	213LP	215LP	254LP	256LP	284LP	286LP	324LP	326LP	3664/5LP	404/5LP	444/5LP
17,000 hours	2 Pole	878	874	862	856	1474	1464	1805	1787	1749	1735	1949	1876	1744
	4 Pole	1106	1101	1086	1072	1853	1841	2259	2242	2213	2187	2430	3831	3703
	6 Pole	1267	1259	1250	1232	2144	2138	2583	2563	2544	2509	2764	4395	4200
	8 Pole	1398	1395	1381	1358	2360	2348	2860	2840	2816	2785	3087	4702	4689
20,000 hours	2 Pole	831	826	814	808	1392	1382	1704	1686	1649	1634	1835	1762	1631
	4 Pole	1046	1041	1026	1012	1750	1738	2132	2115	2086	2061	2287	3609	3481
	6 Pole	1199	1191	1181	1163	2026	2021	2439	2419	2399	2364	2600	4140	3945
	8 Pole	1323	1320	1305	1283	2230	2219	2700	2680	2657	2626	2906	4422	4408
25,000 hours	2 Pole	770	765	753	747	1287	1277	1575	1557	1520	1505	1689	1616	1484
	4 Pole	969	964	949	935	1618	1606	1970	1953	1924	1898	2102	3322	3194
	6 Pole	1111	1102	1093	1075	1875	1869	2252	2232	2212	2178	2389	3812	3617
	8 Pole	1226	1223	1208	1186	2063	2052	2495	2475	2452	2420	2674	4061	4047



WEG Electric Corp.  
 6655 Sugarloaf Pkwy  
 Duluth, GA 30097  
 Phone: 1-800-ASK-4WEG (275-4934)  
[www.weg.net/us](http://www.weg.net/us)

Please contact your authorized distributor:

