

**FNHF**FNH3FEM  
FNH23FEA  
MS11FE**ATENÇÃO:**

- Desconecte da rede elétrica antes de proceder qualquer trabalho neste equipamento.
- Somente profissionais qualificados podem efetuar a instalação e manutenção.
- Obedeça normas nacionais, estaduais, locais e instruções de operação.

**WARNING:**

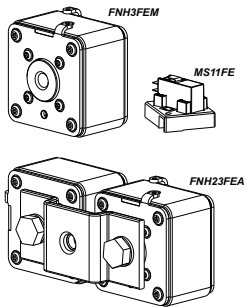
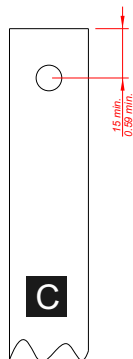
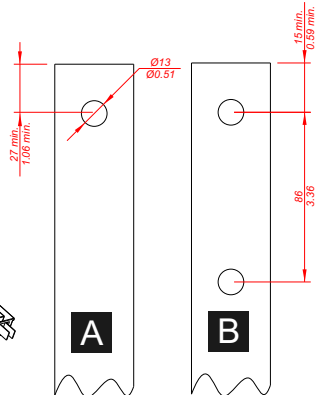
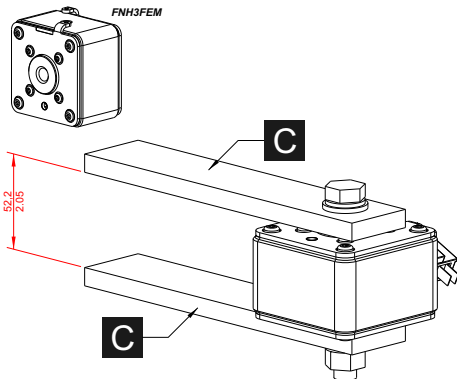
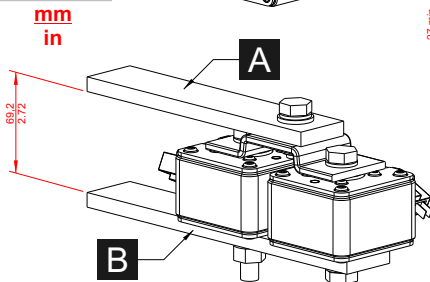
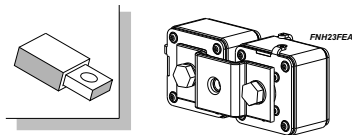
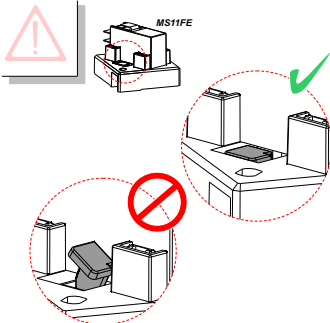
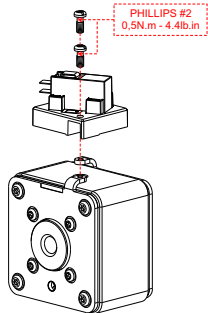
- Installation and maintenance to be performed by authorized personnel only.
- User is cautioned to observe all recommendations, warnings and cautions relating to safety of personnel and equipment as well as general and local health and safety laws, codes and procedures.

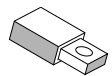
**ATENCIÓN:**

- Desconectar de la red eléctrica antes de hacer cualquier trabajo en este equipamiento.
- Recomendase instalación por profesional calificado.
- Respetar normas nacionales y locales.
- Producto destinado a utilización en instalaciones eléctricas de baja tensión.

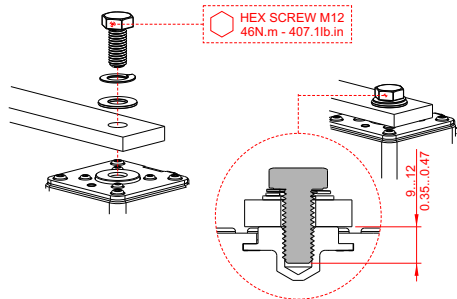
**WARNUNG:**

- Bevor irgend eine Arbeit am Gerät vorgenommen wird, muss sichergestellt sein, dass die Einheit stromlos und freigeschaltet ist.
- Sämtliche Arbeiten an der Einheit dürfen daher ausschließlich nur von Fachpersonal vorgenommen werden.
- Die jeweils geltenden nationalen, örtlichen und anlagenspezifischen Bestimmungen und Erfordernisse sind zu berücksichtigen.



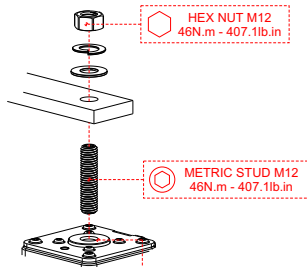


mm  
in



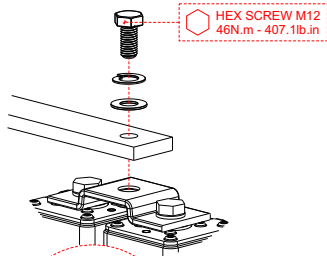
HEX SCREW M12  
46N.m - 407.1lb.in

9...12  
0.35...0.47



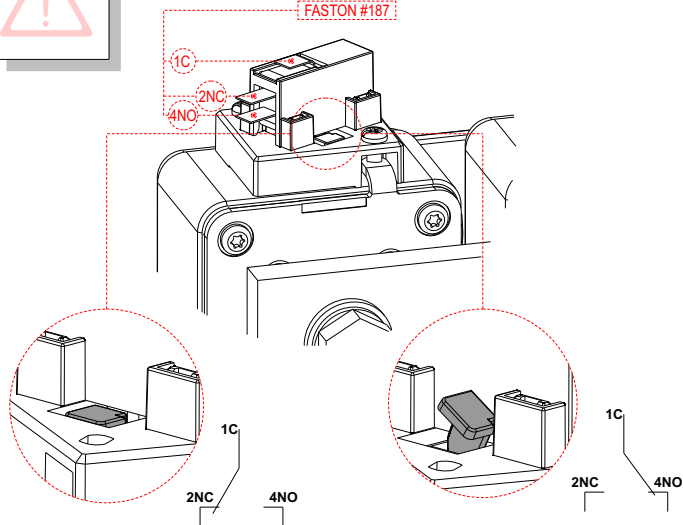
HEX NUT M12  
46N.m - 407.1lb.in

METRIC STUD M12  
46N.m - 407.1lb.in



HEX SCREW M12  
46N.m - 407.1lb.in

0...6  
0\*\*...0.24



FASTON #187

MS11FE	$I_n$	$U_n$				
		250Vac 50/60Hz	8Vdc	30Vdc	125Vdc	250Vdc
	15	15	10	0,6	0,3	
	10*	10**	10**	0,6**	0,3**	

\* PF≥0,4  
\*\* L/R≤7ms

10002613784.00  
WEG Automação  
www.weg.net