

LINES OF ELECTRONICALLY COMMUTATED MOTORS

Industrial Motors

Commercial &
Appliance Motors

Automation

Digital &
Systems

Energy

Transmission &
Distribution

Coatings

Solutions
for air movement
systems



Driving efficiency and sustainability



EC Motor Lines



W30Slim Smart EC For Radial Fan Applications

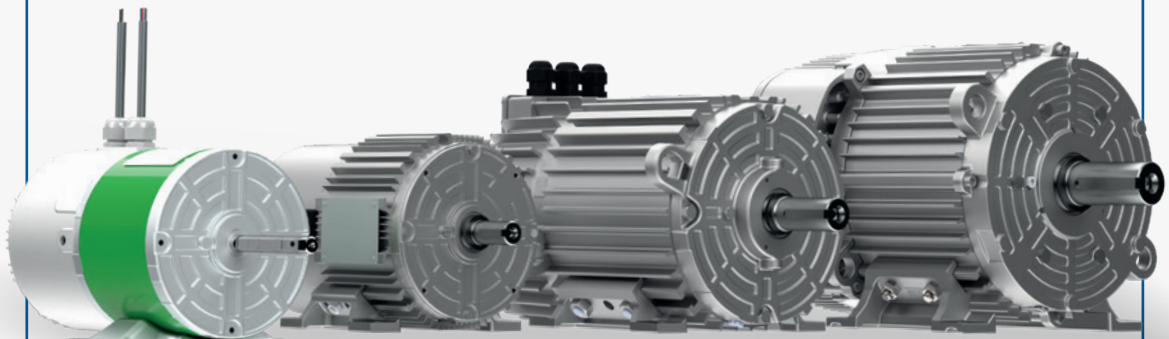
Three Phase 208-240V
from 1.5 HP up to 6 HP

Three Phase 380-480V
from 1.5 HP up to 10 HP

W30 Smart EC For Axial Fan Applications

Three Phase 380-480V from
0.16 HP up to 10 HP

Single Phase 220-277V from
0.16 HP up to 2 HP



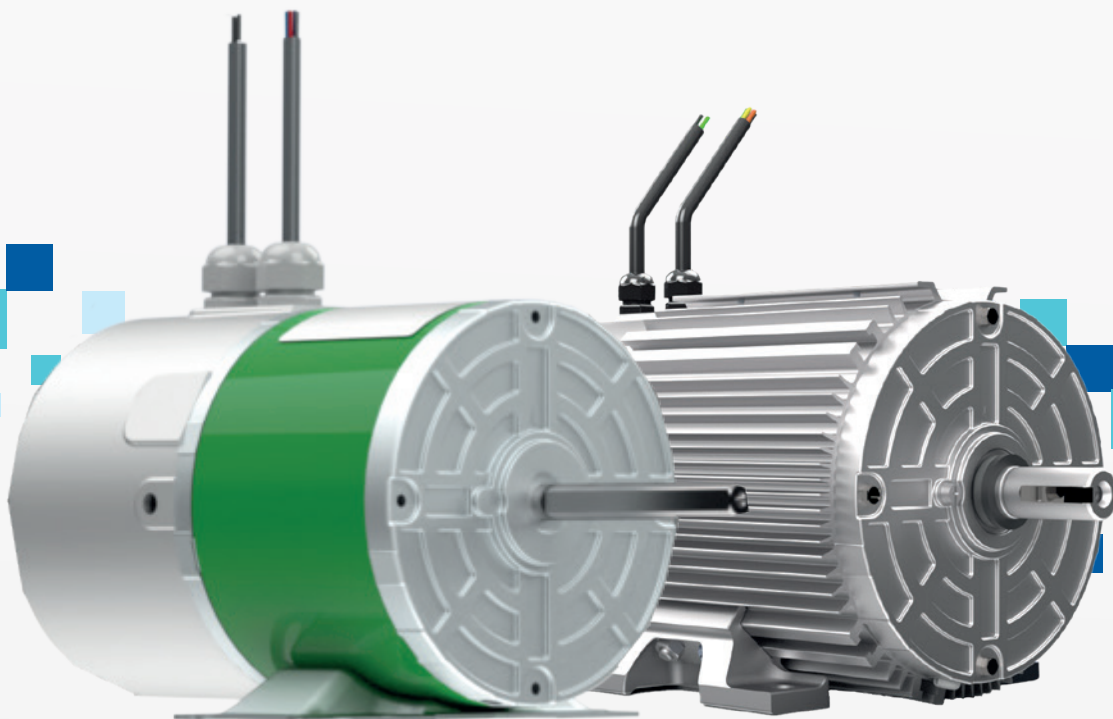
W30 Smart EC

Single-Phase Motors

- Voltage:
 - 115/208 to 277VAC: 1/6 to 1/2 HP
 - 115/220 to 277VAC: 3/4 HP
 - 220 to 277VAC: 1 to 1.5 HP
- Frequency: 50/60 Hz
- Output power: 1/6 to 1.5 HP at 1500, 1800 or 3000 rpm
- Aluminium frame / drive housing
- Protection rating: IP55
- Mounting: B3T
- Ambient temperature:
 - -20 to 40°C (TENV)¹
 - -20 to 60°C (TEAO)²
- Vibration grade: A
- Direction of rotation CW/CCW (selectable)
- Continuous speed adjustment (200 to 1500/1800 rpm and 500 to 3000 rpm) by:
 - Tact buttons (local)
 - DC voltage (remote): 2 to 10 VDC
 - DC current (remote): 4 to 20 mA DC
 - PWM (remote): 10 to 95%
- Local controls optically isolated
- With drain plug and V-ring Seal
- Sealed for life bearings
- Drive-end bearing cap
- Power and control cables 500 mm long
- Electronic protection: overload, over temperature and locked-rotor.
- Fire mode (Override & Maximum speed mode)

Optional & Special features

- IEC80: Pad mounting (4 x 90° or 3 x 120°), T-slot (4 x 90° or 3 x 120°), FF-165 and FC-120 flanges
- Slinger seal for vertical shaft-up mounting 115V input power supply (up to 0.75 HP)
- Decentralized mounting (motor and drive separate)
- Custom cable lengths
- Customized shaft ends
- Double shaft ends (only with decentralised drive version)
- External controller with display to adjust maximum and instantaneous speed values.
- Blower cooling (TEBC)
- Modbus communication
- Passive PFC (Power Factor Correction)³



W30 Smart EC

Three-Phase Motors

- Voltage: 380-480 VAC
- Frequency: 50/60 Hz
- Output power: 0.16 HP to 10 HP at 900, 1200, 1500, 1800 or 3000 rpm
- Aluminium frame / drive housing
- Protection rating: IP55
- Mounting: B3T
- Ambient temperature: -20 to 40 °C (TEAO)¹
- Vibration grade A
- Direction of rotation CW/CCW (selectable)
- Frames: 80 thru 132
- Continuous speed adjustment (200 to 1500/1800 rpm and 500 to 3000 rpm) by:
 - Tact buttons (local)
 - DC voltage (remote): 2 to 10 VDC
 - DC current (remote): 4 to 20 mA DC
 - PWM (remote): 10 to 95%
 - Modbus communication
- Alarm relay (NO & NC)
- Local controls optically isolated
- With drain plug and V-ring Seal
- Sealed for life bearings
- Drive-end bearing cap
- Connection box with push-in terminals
- Electronic protection: overload, over temperature and locked-rotor.
- Fire mode (Override & Maximum speed mode)

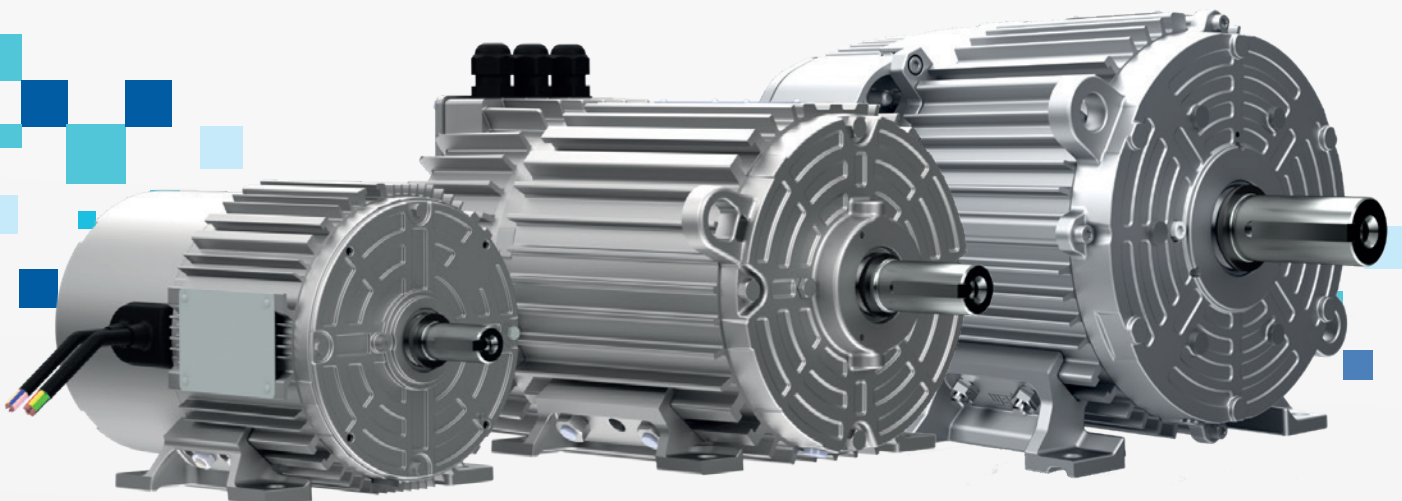
Optional & Special features

- Pad mounting (4 x 90° or 3 x 120°), T-slot (4 x 90° or 3 x 120°), FF-165 and FC-120 or FC-184 flanges
- Pad mounting (4 x 90°), T-slot (4 x 90°), FF-215 and FC-160 flanges
- Slinger seal for vertical shaft-up mounting
- Decentralised mounting (drive and motor separate)
- Power supply cable and control cable installation
- Customized shaft ends
- Double shaft ends (only with decentralised drive version)
- External controller with display to adjust maximum and instantaneous speed values
- Higher Ambient Temperature under request up to 60 °C

Notes:

¹ Totally Enclosed, Air Over rated. Minimum airflow over motor frame and drive cover 5m/s.

² Totally Enclosed, Non-ventilated. Refer to WEG for electrical data.



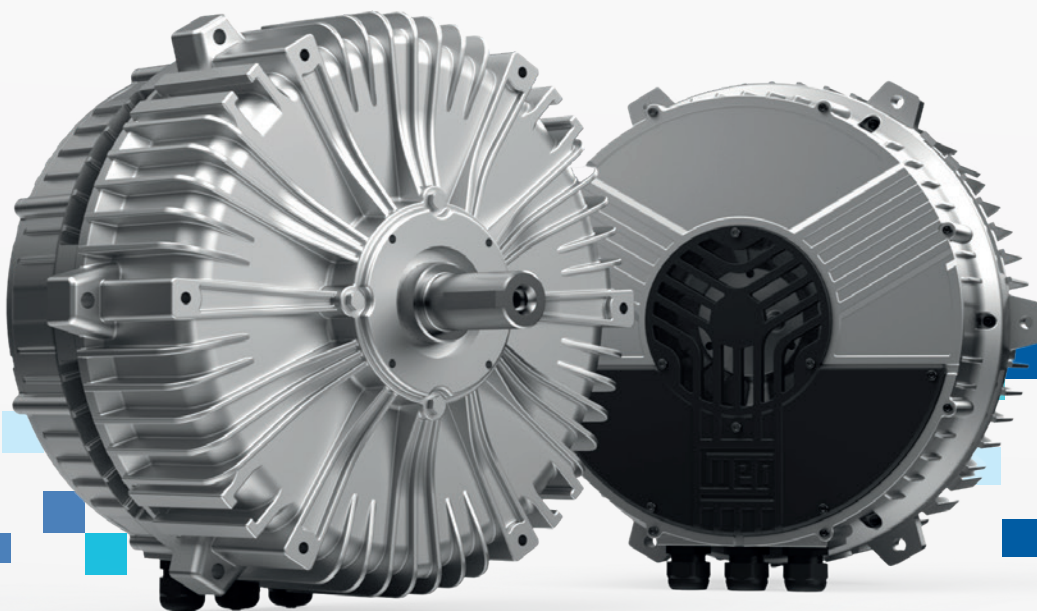
W30Slim Smart EC

Three-Phase Motors

- Voltage: 380-480 VAC
208-240 VAC (up to 5.5 HP)
- Frequency: 50/60 Hz
- Output Power: 1.5 HP to 10 hp at 1500, 1800, 2400, 3000 or 3600 rpm
- Aluminum Housing
- Protection Rating: IP55 Standard
- Ambient temperature: -25 to 50°C
- Vibration Grade: A
- Direction of rotation CW/CCW (selectable)
- Continuous Speed Adjustment (200 to 1500, 200 to 1800, 500 to 2400, 500 to 3000, and 500 to 3600) by:
 - DC Voltage (remote): 2 to 10 VDC
 - DC Current (remote): 4 to 20 mA
 - DC PMW (remote): 10% to 95%.
- Serial communication via Modbus
- Digital Inputs: Run/Stop; CW/CCW
- Digital Output: Speed Reference in frequency
- TEFC cooling
- Mounting: Spider mounting, Flange FF, Flange C, Slot "T"
- Alarm Relay (NO & NC)
- With Drain Plug and Oil Seal
- ZZ Bearings
- Front Bearing Locking Ring
- Junction Box with screwless spring-cage connector
- Electronic Protection: Overload, Over temperature, Over voltage, Undervoltage, Timeout and Locked Rotor
- Fire Mode (Operation at maximum speed with electronic protections disabled).
- Suitable for IT Grid (High Resistance Ground or Corner Ground Delta)

Optional Features

- Up to IP66 degree of protection
- Shaft Grounding ring
- Millimeter and NPT cable gland thread
- Stainless steel cable gland
- Stainless steel shaft



WEG QuickSet

Desktop Interface
for Motors





Simple
Efficient
Reliable

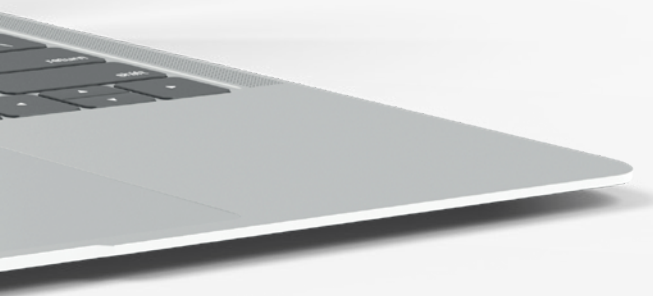
The ideal solution
for controlling
and optimizing your
WEG Electronically
Commutated Motors

WEG QuickSet is a smart and intuitive desktop application that makes configuring, operating, and diagnosing WEG EC motors faster and easier than ever.

Its user-friendly interface and guided wiring steps reduce setup time and prevent configuration errors.

Key controls including ON/OFF, speed adjustment, rotation direction and real-time motor status are always at your fingertips.

Advanced adjustment options and built-in connection troubleshooting deliver flexibility and reliability, minimizing downtime and maximizing performance.




The scope of solutions from the WEG Group is not limited to the products and solutions presented in this catalog. To learn about our full portfolio, please consult us

**Explore WEG's
global operations.**




www.weg.net



 +55 47 3276.4000

 motores@weg.net

 Jaraguá do Sul - SC - Brasil