

CFW320-MINI DRIVE



The CFW320 is a high-performance variable speed drive for three-phase induction motors, ideal for applications on machines or equipment that require precise control and easy operation. With a compact size, contactor-like installation, selectable WEG vector (VVW) or scalar (V/F) control, built-in operating interface (HMI), SoftPLC, free WPS programming software and plug-in accessories to add functionalities, it is a flexible solution with excellent cost-benefit.



Standard Features

- Ratings:
 - ¼ to 2HP @ 3/230VAC, 1/120VAC.
 - ¼ to 3HP @ 3/230VAC, 1-Phase to 3-Phase.
 - ¼ to 5HP @ 3/230VAC, 3-Phase to 3-Phase.
 - ½ to 10HP @ 3/460VAC, 3-Phase to 3-Phase.
- Listed under new UL61800-5-1.
- Heavy Duty (150% Overload for 60 Seconds) rated as standard.
- Switching frequency: 2.5 to 15kHz.
- Conformal Coated Circuit Boards as standard.
- Finger-safe IP20 enclosure.
- Scalar (V/F) and WEG Voltage Vector (VVW) control.
- SoftPLC Built-in; Programming software “WPS” is free.
- Built-in 4 Digital inputs, 1 analog input, and one Form-C relay output.
- Two independent slots, one for communication and another to expand drive I/O capability.
- Optional Communication: Modbus RTU, BACnet, DeviceNet, Profibus DP, CANopen, Modbus TCP, Ethernet/IP.
- Optional I/O plug-in Modules.



Applications:

- Centrifugal Pumps
- Fans/Blowers
- Blenders / Mixers
- Centrifuges
- Compressors
- Conveyors
- Roller Tables
- Granulators
- Commercial Dryers
- Rotary filters
- Grizzly Feeders



CFW320 - MINI DRIVE

Flexibility

Flash Memory Module (MMF-uDrives Accessory)

It downloads the original parameter setting to several CFW320 variable speed drives turned off.



2 Slots for Function Expansion with Accessories

Slots for
accessibility
and
network
communication
module

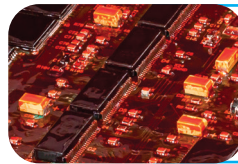
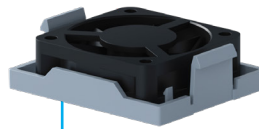
Slots for
input and
output (I/O)
expansion
module



RFI Filter (Accessory CFW320 - KFA / B / C)

Category C2 or C3 to
reduce the electromagnetic
interference emission level

Fan Easily Removable



Greater Protection for Aggressive Environments

Standard coating classified as 3C2 according to IEC 60721-3-3 on all versions, ensuring greater protection to the internal circuits against corrosive atmospheres.

For pricing, contact your Local WEG distributor.

To locate a distributor, Please visit <https://www.weg.net/institutional/US/en/contact/where-to-buy>



WEG Electric Corp.
6655 Sugarloaf Pkwy.
Duluth, GA 30097
Phone: 1-800-ASK-4WEG
www.weg.net

