

Industrial Motors  
Commercial &  
Appliance Motors  
Automation  
**Digital &  
Systems**  
Energy  
Transmission &  
Distribution  
Coatings

# WCD ED320

Technology  
**driving results**



Driving efficiency and sustainability



# WCD ED320

---

Technology **driving** results





# Connectivity for data monitoring and processing

The **WCD ED320** was specially developed to make machines and equipment smarter through integration with the WEGnology® IoT platform, enhancing process management with greater agility and efficiency.

Its edge computing capabilities allow for the execution of various calculations and logic based on artificial intelligence and machine learning algorithms, optimizing local data traffic between sensors and machines, and enabling remote availability via software.

The **WCD ED320** operates with the **WEGnology OS** operating system, which offers a wide range of essential features, such as remote and local interface parameterization. In addition, it supports WPA3 Enterprise networks, remote firmware updates with digital certificates, and end-to-end encrypted communication, ensuring greater security and reliability for a wide variety of applications.

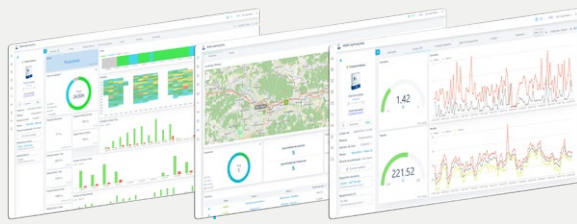


Product with connectivity to WEG's IoT platform.



Greater data security

# Application

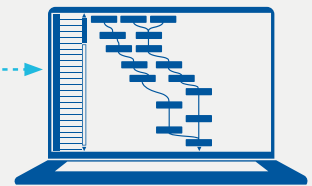


Remote access  
from anywhere in  
the world

MQTT



WCD ED320

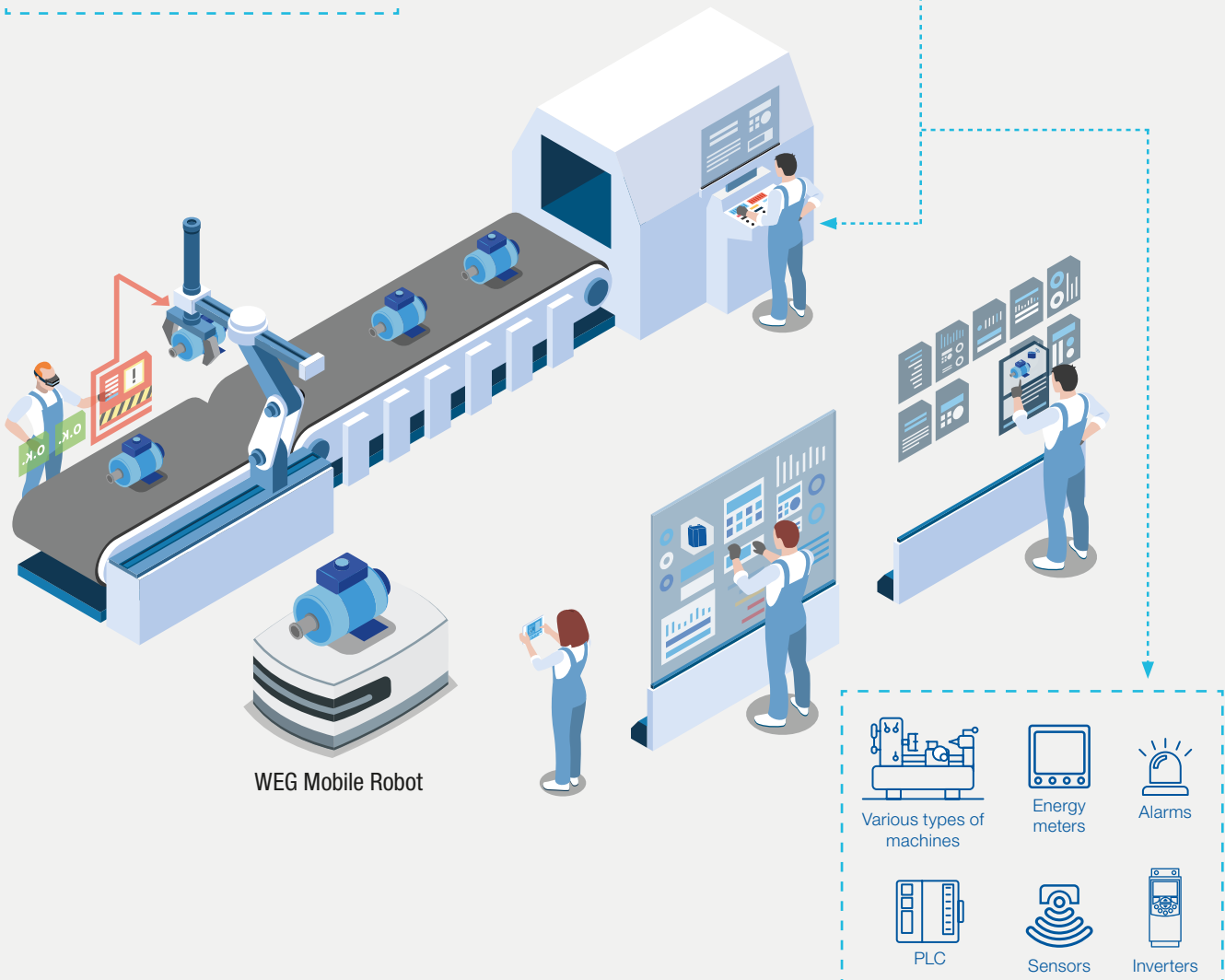


Low-code logic running  
locally on the WCD ED320

## WEG Smart Machine (Software as a Service)

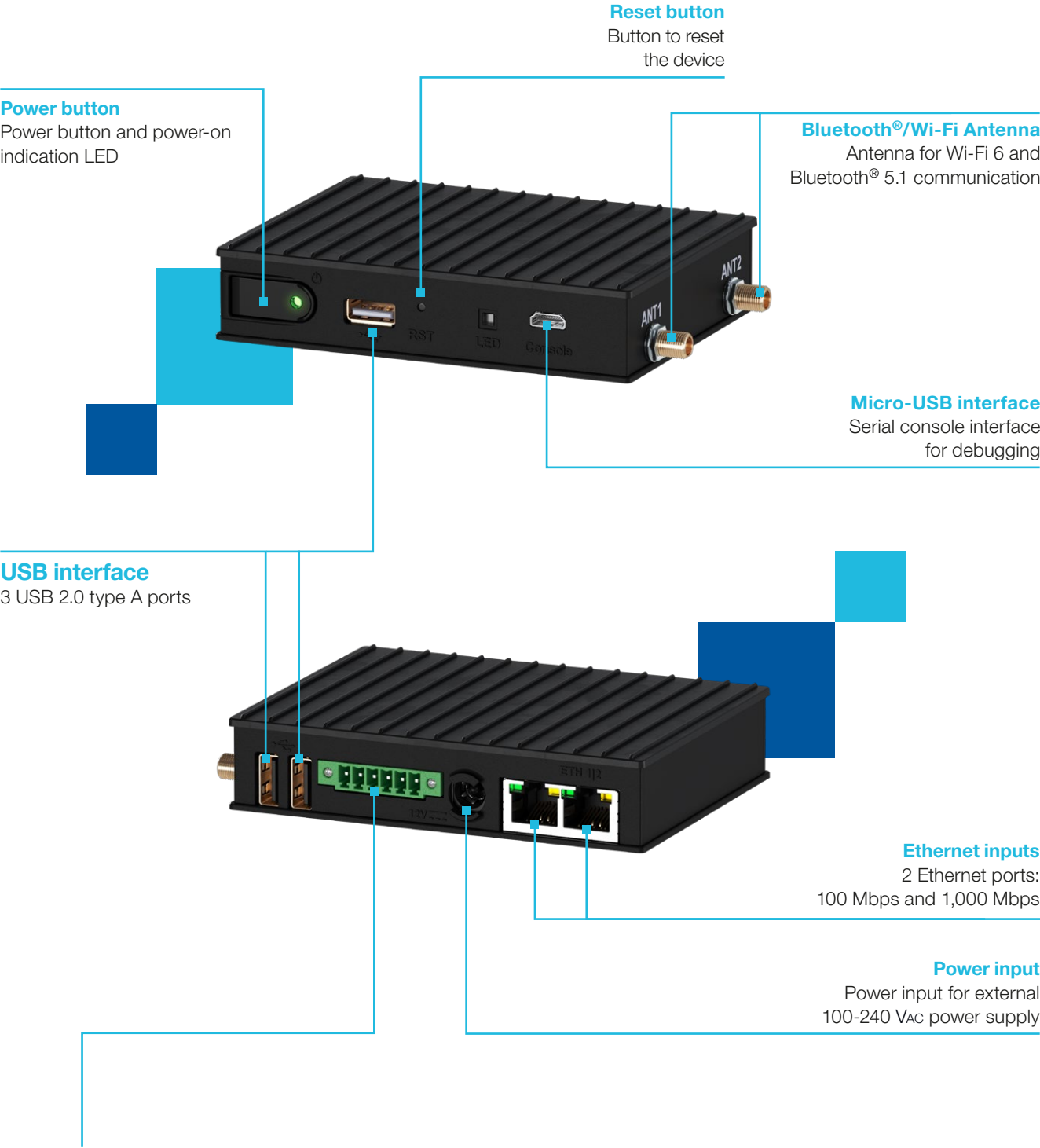
Cloud-based software designed for the digitalization of machines and equipment, offering a wide range of no-code tools for the simple and intuitive creation of dashboards and alarms. Ideal for monitoring, parameterization, and remote control of machines from anywhere in the world.

[Learn more](#)

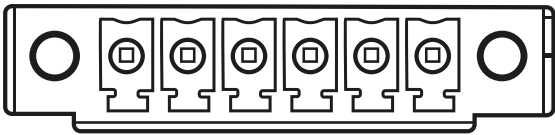


WEG Mobile Robot

# Interfaces



Pin	RS485 mode	RS232 mode	Pin
1	RS485_NEG	RS232_TXD	6
2	RS485_POS	RS232_RTS	5
3	GND	GND	4
4	NC	RS232_CTS	3
5	NC	RS232_RXD	2
6	GND	GND	1



Note: Pinout starts from right to left.

# Data sheet

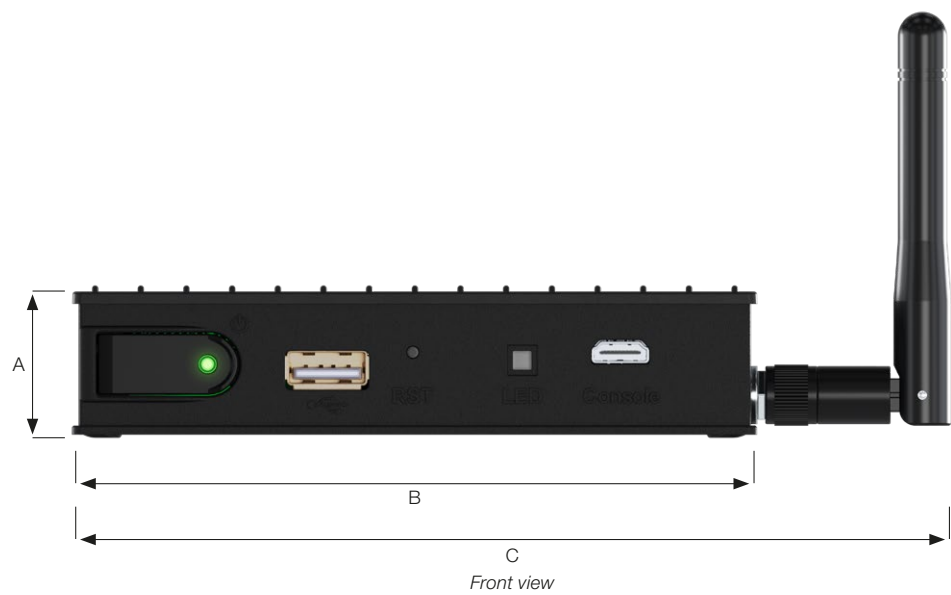
Reference	WCD-ED320	
Basic data	<b>CPU</b>	Quad-Core ARM Cortex-A53, 1.8 GHz
	<b>Coprocessor</b>	ARM Cortex-M4
	<b>RAM</b>	2 GB, LPDDR4
	<b>Storage</b>	16 GB, eMMC flash
Communication interfaces	<b>Ethernet</b>	2 ports (1x100 Mbps + 1x1,000 Mbps), RJ45
	<b>Wi-Fi</b>	Intel Wi-Fi 6, Dual-band 802.11ax
	<b>Bluetooth®</b>	5.1 low energy
	<b>USB port</b>	3 USB 2.0 ports, type A
	<b>Serial ports</b>	1 serial console via UART (micro-USB) 1x RS485 (half duplex, 2 wires) or 1xRS232
	<b>Main protocols</b>	MQTT HTTP Modbus-RTU/TCP
Electrical characteristics	<b>Power supply</b>	8 to 36 V <sub>DC</sub> , power supply included <sup>1)</sup>
Mechanical characteristics	<b>Dimensions</b>	112 x 84 x 25 mm <sup>2)</sup>
	<b>Material</b>	Aluminum structure
	<b>Cooling</b>	Fanless (passive cooling)
	<b>Mass</b>	450 grams
	<b>Mounting</b>	DIN rail / horizontal surface
	<b>Protection rating</b>	IP20
Other information	<b>Warranty</b>	1 year
	<b>Operating temperature</b>	0 a 60 °C
	<b>Storage temperature</b>	-40 a 85 °C
	<b>Relative humidity</b>	10% to 90%, operation 5% to 95%, storage
Certification	–	CE, FCC, ANATEL

Notes: 1) Includes external power supply: 100-240 V<sub>AC</sub> 50/60 Hz, 36 W.

2) Antenna dimensions are not considered.



# Dimensions



Dimension reference	A	B	C	D	E
Dimensions in mm	25	112	147	65	93

## Certification



## Accessories

The WCD ED320 is supplied with the components listed below:

Reference	Description	Illustrative images
<b>Wi-Fi Antenna/Bluetooth®</b>	<ul style="list-style-type: none"> <li>802.11ax Wi-Fi antenna and Bluetooth® 5.1 (dual band)</li> <li>Dual band 2.4 GHz / 5 GHz</li> </ul>	
<b>RS485/RS232 connector</b>	<ul style="list-style-type: none"> <li>6-pin plug terminal connector</li> </ul>	
<b>Power supply</b>	<ul style="list-style-type: none"> <li>External power supply</li> <li>Input: 100–240 V<sub>AC</sub>, 50/60 Hz, 36 W</li> <li>12 V<sub>DC</sub> output, 3 A</li> </ul>	
<b>Antenna adapter</b>	<ul style="list-style-type: none"> <li>An SMA male and female adapter connector to other antenna models</li> </ul>	
<b>DIN rail</b>	<ul style="list-style-type: none"> <li>DIN rail mounting via metal mounting bracket and relay lock clip</li> </ul>	

The Wi-Fi extension antenna accessory is offered separately, as listed below:

<b>Wi-Fi range extender antenna</b>	<ul style="list-style-type: none"> <li>Omni-directional Wi-Fi extension antenna</li> <li>Gain: 5 dBi, Length: 3 m</li> <li>Magnetic base</li> </ul>	
-------------------------------------	---	--



[illegible]



# Global presence

is essential, as much  
as understanding  
your needs.



## Global Presence

With more than 47,000 employees worldwide, WEG is one of the largest electric motors, electronic equipments and systems manufacturers. We are constantly expanding our portfolio of products and services with expertise and market knowledge. We create integrated and customized solutions ranging from innovative products to complete after-sales service.

WEG's know-how guarantees our **WCD ED320** are the right choice for your application and business, assuring safety, efficiency and reliability.



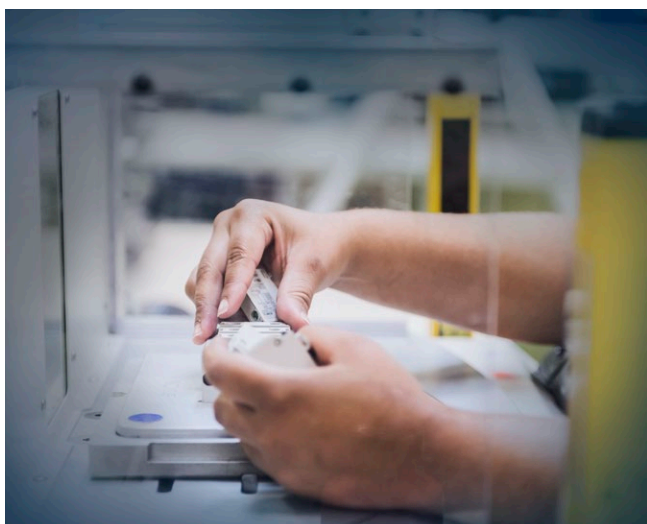
**Availability** is to have a global support network



**Partnership** is to create solutions that suits your needs

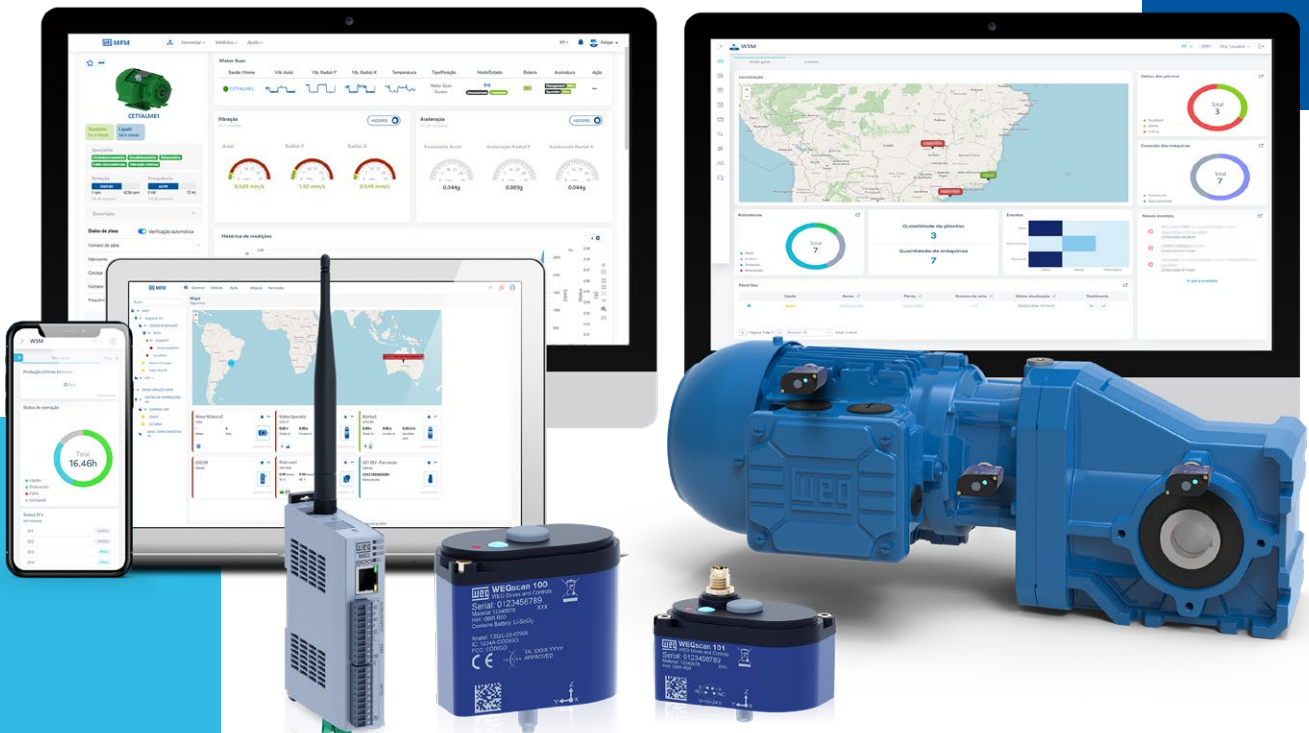


**Competitive edge** is to unite technology and innovation



# Learn More

High performance and reliable products to improve your production process.



Excelence is to provide a whole solution in industrial automation that improves our customers productivity.

Visit: [www.weg.net](http://www.weg.net)

 [youtube.com/wegvideos](https://youtube.com/wegvideos)

The scope of WEG Group solutions  
is not limited to products and solutions  
presented in this catalogue.


**To see our portfolio, contact us.**

**For WEG's worldwide  
operations visit our website**




**[www.weg.net](http://www.weg.net)**



 **+55 47 3276.4000**

 **[digitalesistemas@weg.net](mailto:digitalesistemas@weg.net)**

 **Jaraguá do Sul - SC - Brasil**

**Cod: 50151767 | Rev: 00 | Date (m/y): 07/2025.**

The values shown are subject to change without prior notice.  
The information contained is reference values.