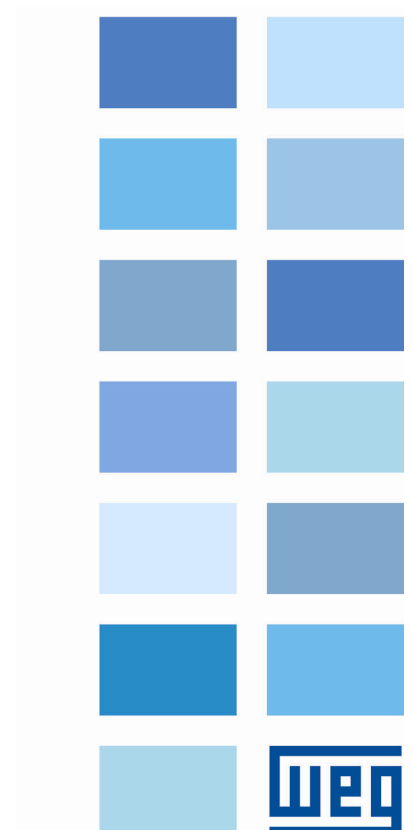


BACnet

CFW-11

Firmware Update Guide

Language: English





Firmware Update Guide

Series: CFW11

Language: English

Document number: 10000796947 / 01

Publication Date: 04/2010

SUMMARY

SUMMARY	3
ABOUT THE MANUAL.....	4
1 FIRMWARE UPDATE.....	5
1.1 NECESSARY MATERIALS.....	5
1.2 PROCESS	5
1.3 PICTURES OF FIRMWARE UPDATE	6

ABOUT THE MANUAL

This guide provides the necessary description to firmware update the CFW11 frequency inverter standard version to BACnet version (VE2.20).

This guide should be used by the WEG distributor, WEG representative and WEG branch only. This guide is not design for the end user.

1 FIRMWARE UPDATE

The firmware of CFW11 can be updated easily by the USB interface and the WEG WFD software.

1.1 NECESSARY MATERIALS

- CFW11 Program Manual;
- CFW11_BACnet_fw_P_R00.zip file that contains firmware file, update guide, USB driver and the firmware update software;
- Microcomputer;
- USB cable.

1.2 PROCESS



ATTENTION!

After firmware update, all inverter parameters will be reset. If the inverter has the application parameters it is necessary to save the parameter list of equipment before firmware update to recover the configuration later.

After firmware update, for a properly device operation, the following parameters must be programmed:

- P0201 – Language
- P0296 – Network nominal voltage
- P0204 – load manufacture standard according frequency desired:
 - P0204 = 5: load 60 Hz
 - P0204 = 6: load 50 Hz

Steps to firmware update:

- 1 Unzip the file CFW11_BACnet_fw_P_R00.zip as Figure 1.1.

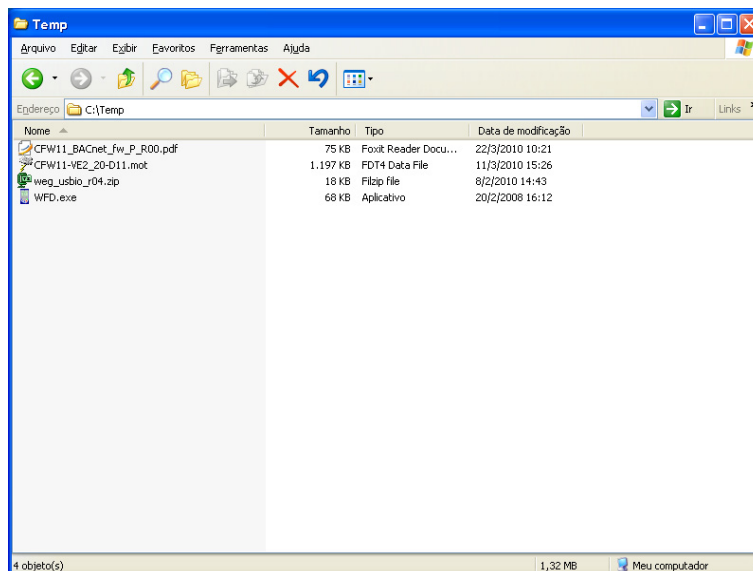


Figure 1.1– Files for firmware update

- 2 Turn on the CFW11 inverter;
- 3 Connect the USB cable on CFW11 inverter;
- 4 If necessary install the USB driver (unzip the weg_usbio_r04.zip file);
- 5 Configure WFD software:
 - 5.1 Start WFD.exe software as Figure 1.2;
 - 5.2 WFD software shows the screen as Figure 1.3;

- 5.3 It is necessary to select the equipment on the WFD software as Figure 1.4. Choose the “CFW11” on menu Settings, Equipment.
- 5.4 Choose the binary file to load on Open File button as Figure 1.5. The file to load is CFW11-VE2_20-D11.mot unzipped in step 1;
- 5.5 Press the Download button to start the file load as Figure 1.6. First the WFD software sets the inverter to firmware update mode as Figure 1.7. When inverter is in firmware update mode the WFD sends the firmware file as Figure 1.8;
- 5.6 WFD shows the status box when the firmware update ends as Figure 1.9.


NOTE!

Do not turn off the equipment while update firmware is in process.

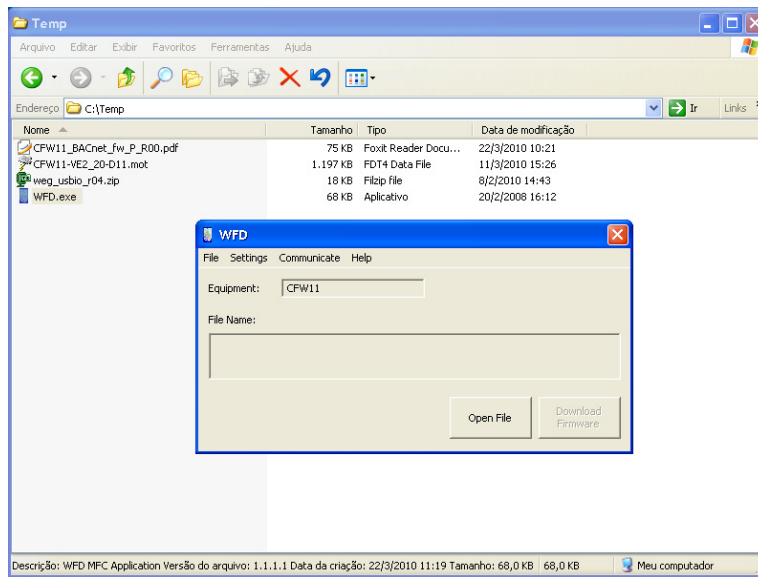
1.3 PICTURES OF FIRMWARE UPDATE


Figure 1.2 – WFD Software.

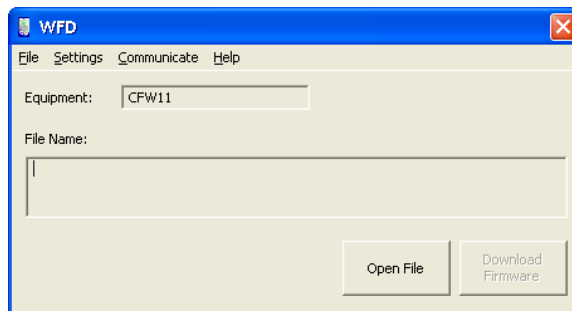


Figure 1.3 – WFD.

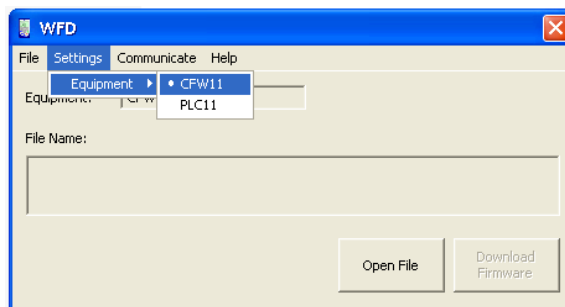


Figure 1.4 – Equipment Configuration.

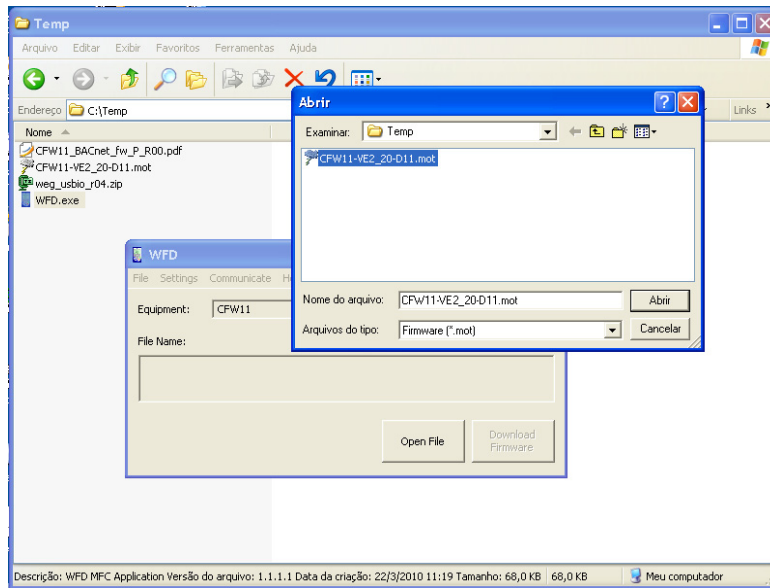


Figure 1.5 – Binary file selection.

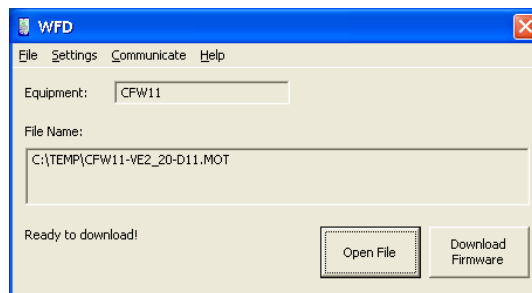


Figure 1.6 – WFD ready to download.

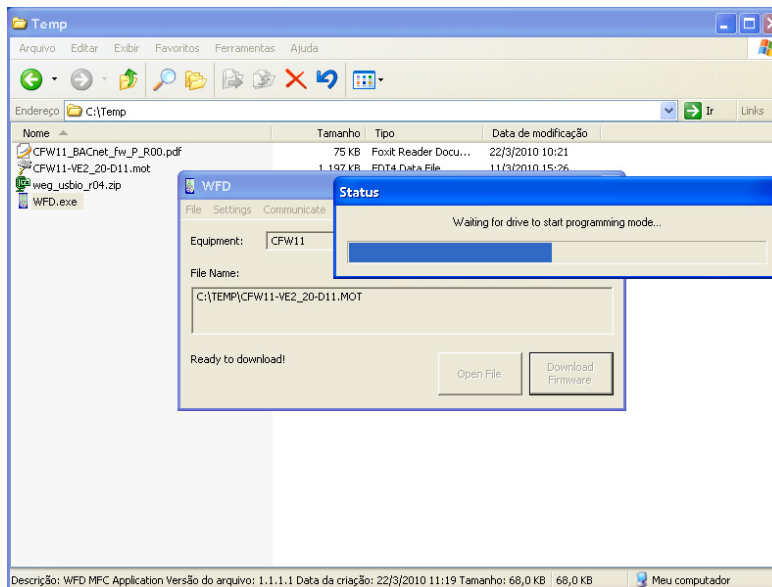


Figure 1.7 – Set the inverter to firmware update.

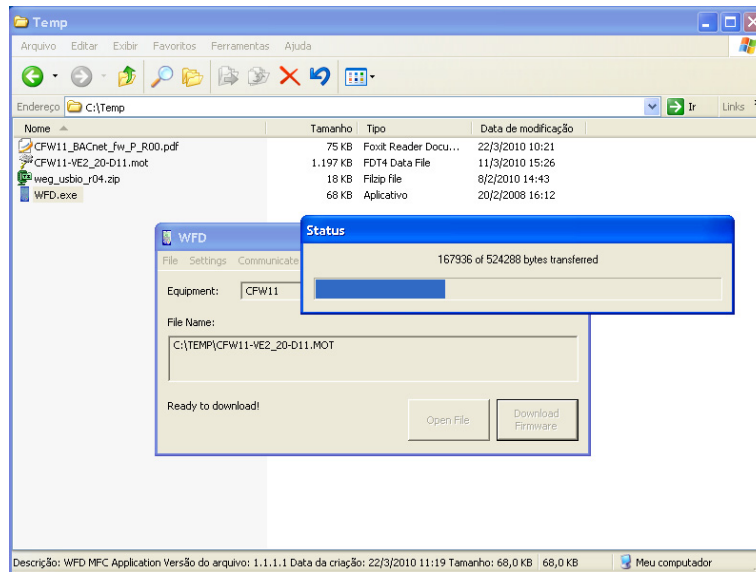


Figure 1.8 – Firmware update process.

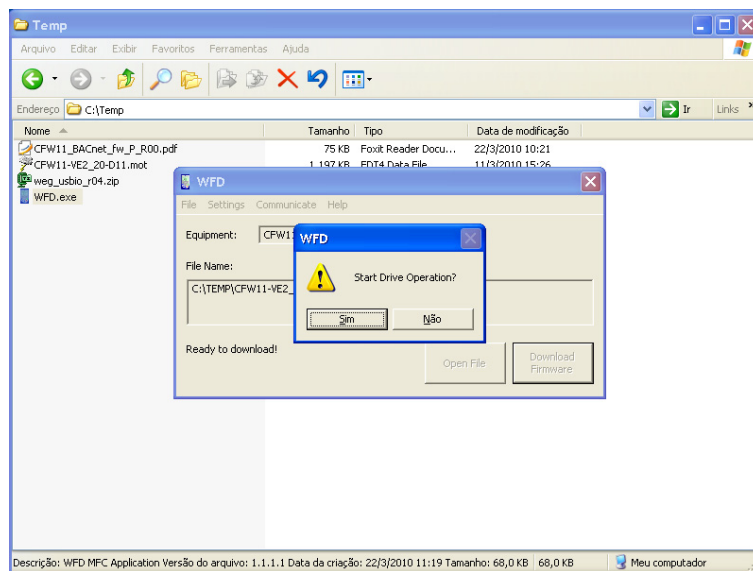


Figure 1.9 – Firmware Update end.



WEG Equipamentos Elétricos S.A.
Jaraguá do Sul – SC – Brasil
Fone 55 (47) 3276-4000 – Fax 55 (47) 3276-4020
São Paulo – SP – Brasil
Fone 55 (11) 5053-2300 – Fax 55 (11) 5052-4212
automacao@weg.net
www.weg.net