

WEG MOTOR SCAN

Ready for Industry 4.0



Motors | Automation | Energy | Transmission & Distribution | Coatings

HOW DOES IT WORK?

WEG Motor Scan measures the vibration, temperature and running hours of the electric motor diagnosing any faults.

The information is uploaded to the **cloud** via **smartphone** or **gateway**.

The data can be analyzed on the smartphone screen and an in-depth way on the **WEG IoT Platform**.

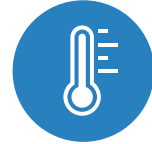


BENEFITS FOR BETTER RESULTS

- Downtime reduction
- Maintenance routine optimization
- Increases equipment efficiency
- Reduction in spare parts
- Ready for Industry 4.0
- Add value to the product (OEM's)
- Add value to the service (maintenance companies)



VIBRATION



TEMPERATURE



RUNNING HOURS



AUTOMATIC UPLOAD



DIAGNOSTICS



BLUETOOTH®



MANAGEMENT OF MAINTENANCE



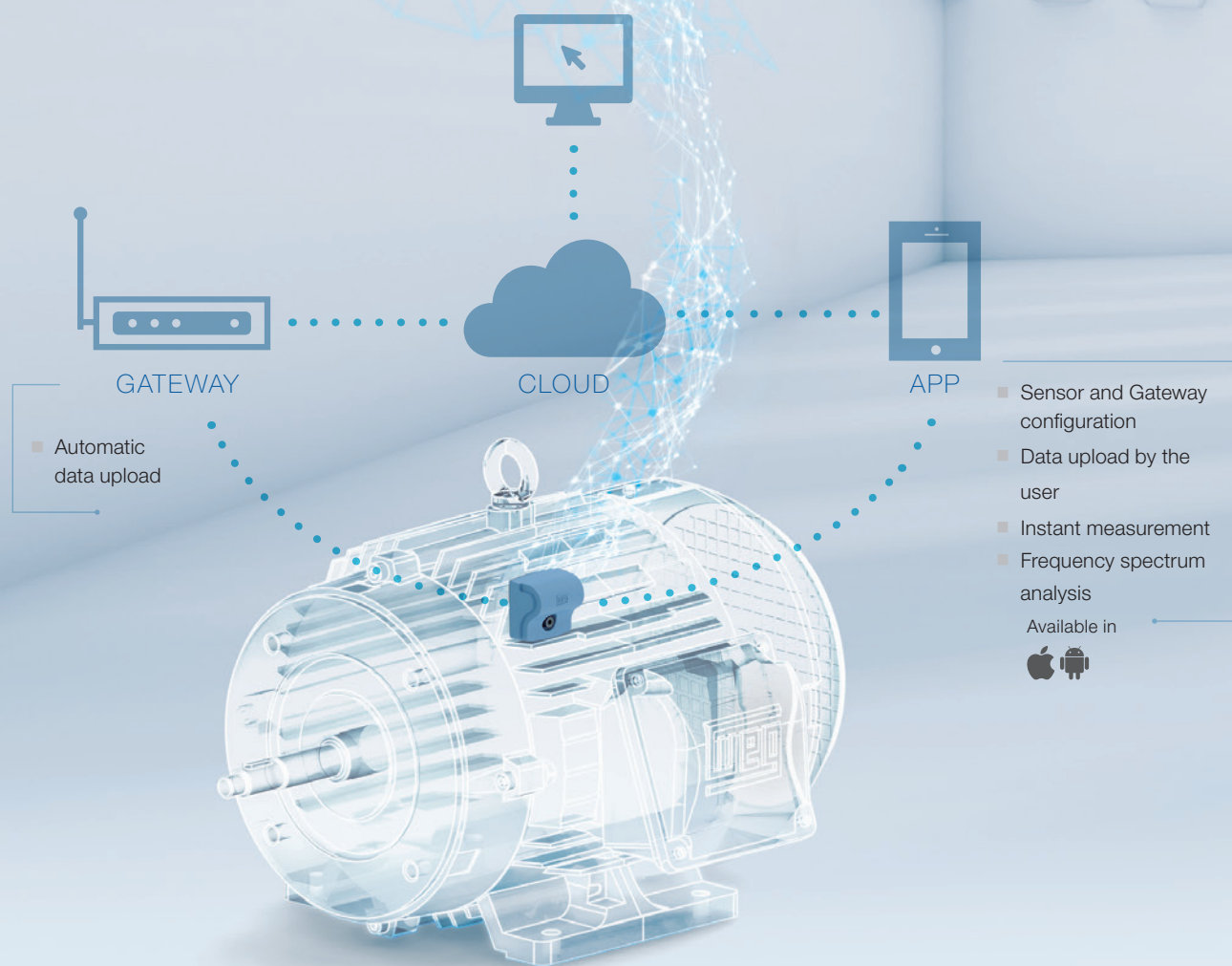
CONFIGURATION OF WARNING LIMITS

FULL MONITORING

WELCOME TO THE INDUSTRY 4.0

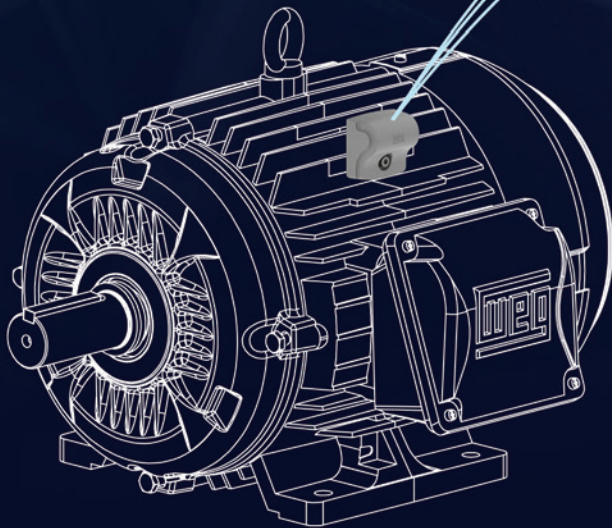
WEG IOT PLATFORM

- Full view of stored data
- Failure diagnosis
- Warnings configuration
- Configuration of plants for easier management
- User options



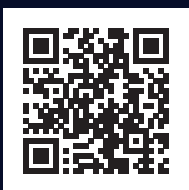
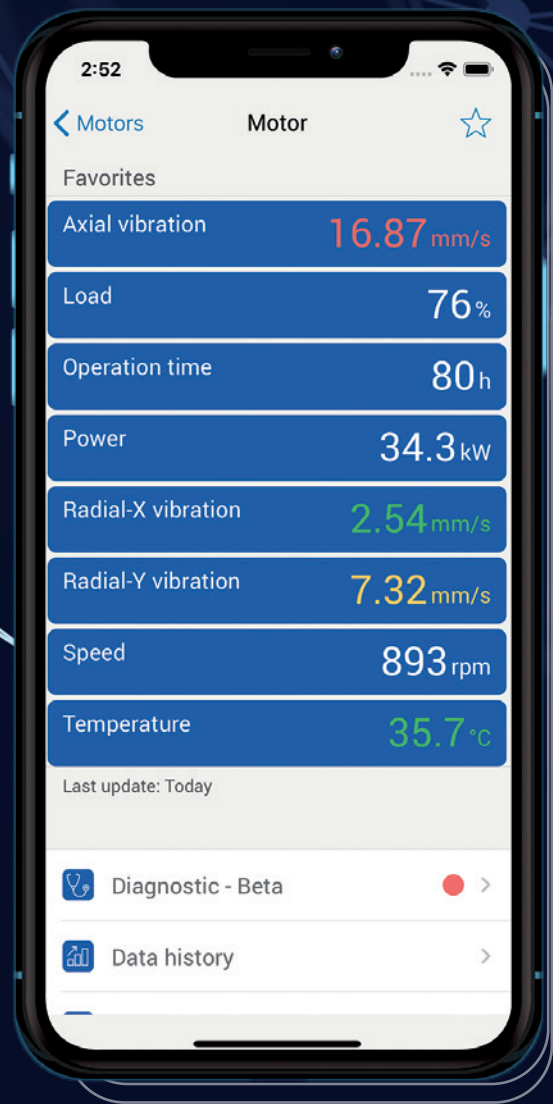
THE INDUSTRY WILL NEVER BE THE SAME AGAIN.

GATEWAY WEG MOTOR SCAN. INDUSTRY 4.0 EVEN MORE EFFICIENT.



The **WEG Motor Scan Gateway** sends information in real time to the cloud through WiFi, ethernet or 3G / 4G cable, allowing immediate monitoring of remote motor performance. Additionally, the **WEG Motor Scan** sensor has been updated with new features.

Much more technology and connectivity for an even more efficient Industry 4.0.



www.weg.net/wegmotorscan

TECHNICAL INFORMATION

Features

Available

Future

Measurements

| | | |
|---------------------------|---|---|
| 3-Axis vibration (mm/s) | • | |
| Vibration spectrum | • | |
| Surface temperature (°C) | • | |
| Running hours (h) | • | |
| Energy consumption (kWh)* | | • |
| Load (%)* | • | |
| Speed (rpm) | • | |
| Frequency (Hz) | • | |
| Bearing Condition* | | • |
| Unbalancing* | • | |
| Misalignment* | • | |

*Features not available when the motor is fed by VFD.

Motor connection

| | | |
|--------------|---|--|
| DOL | • | |
| Soft-starter | • | |
| VFD | • | |

Sensor and WEG IoT Platform Features

| | | |
|---|--|---|
| Open platform | | • |
| New communication protocols | | • |
| New power supplies and new sensors | | • |
| Winding temperature | | • |
| Advanced prediction of bearing failures | | • |

User Options

| | | |
|---------------------------------------|---|--|
| Alarm settings | • | |
| Notifications | • | |
| Temperature Measurement (each 10 min) | • | |
| Vibration Measurement (hourly) | • | |
| Plant management | • | |
| Preventative maintenance events | • | |

Degree of Protection

| | | |
|------|---|--|
| IP66 | • | |
|------|---|--|

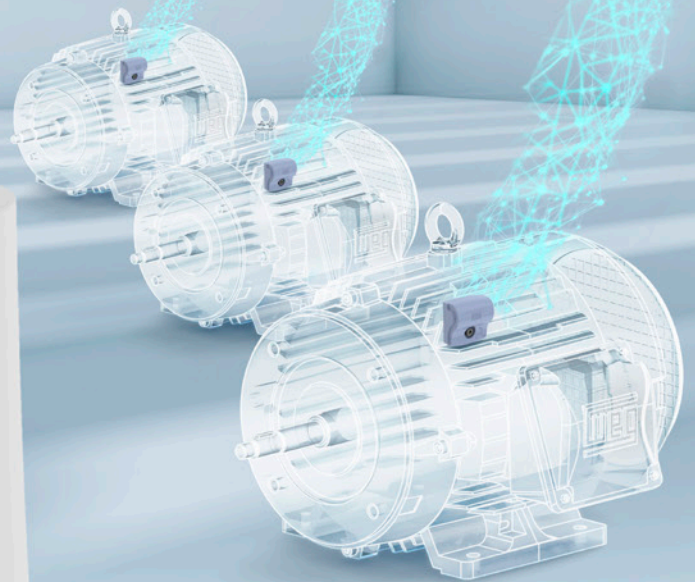
Certifications

| | | |
|-----------------------------|---|---|
| CE | • | |
| Anatel | • | |
| FCC, IC, RCM, ICASA, Subtel | • | |
| Hazardous Location | | • |

Gateway

| | | |
|--|---|--|
| | • | |
|--|---|--|

MUCH MORE TECHNOLOGY AND
CONNECTIVITY FOR AN EVEN MORE
EFFICIENT INDUSTRY 4.0.



For WEG's worldwide
operations visit our website



www.weg.net



AUTOMATION

 +55 47 3276.4000

 automacao@weg.net

 Jaraguá do Sul - SC - Brazil

Cod: 50079352 | Rev: 06 | Date (m/a): 02/2021.

The values shown are subject to change without prior notice.
The information contained is reference values.