

MECHANICAL INTERLOCK

Applicable to ACW125, ACW250, ACW400, ACW800

Read the manual and warning message for safety before using products.

☒ This manual should be given to the person who actually uses the products and is responsible for their maintenance.

SAFETY PRECAUTION

☒ Before installation, wiring, operation, maintenance and inspection of the device, read the safety precautions carefully and follow the message to ensure proper operation.

⚠ DANGER It may result in death or serious injury.

⚠ CAUTION It may result in injury or physical damage.

⚠ DANGER

☒ Turn off the power before starting mounting, dismounting, wiring, maintenance or inspection. Failure to do may result in electric shocks and burns.

⚠ CAUTION

1. Do not use any deformed or damaged device.
2. Mounting, withdrawing, maintaining and checking should be done by an authorized or certified person.
3. It should not be used in severe environment such as high temperature, high humidity, dusty, corrosive gas, excessive vibration and impulse. They may result in fire or malfunction.
4. Use the device in a range of the rate current and pole of MCCB.
5. Mounting should be done according to the instruction manual. Failure to mount may cause malfunction of MCCB or cause an incident which makes the operator hurt.
6. Screws should be tightened to specific torque.
7. Be careful not to be damaged by accidents during transportation or installation.
8. Do not modify the device unless it is permitted.
9. When the device becomes useless, it should be disposed as an industrial waste."

1. INTERLOCK Installation

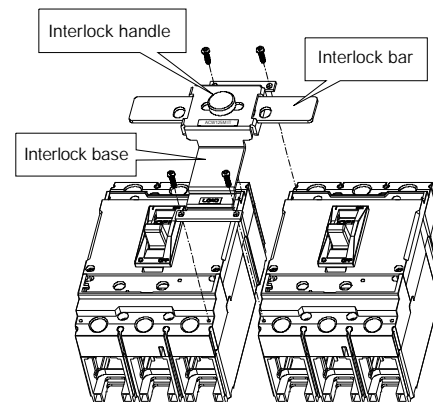
1-1. Check whether the Mechanical Interlock Unit is compatible with the ACW models.

Type of mechanical interlock units and compatible ACW.

ACW	ACW125	ACW250	ACW400	ACW800
Type	MIT ACW125	MIT ACW250	MIT ACW400	MIT ACW800

1-2. Please put one of the ACW in the ON position and another in OFF position or put both ACWs in the OFF position.

Assembly is impossible in case one of them is in the TRIP position or both are in the ON position.



Mount the Mechanical Interlock Unit to ACW covers as shown on the image.

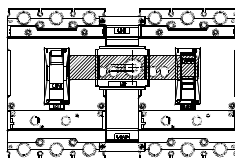
Fit the Mechanical Interlock Unit with holes of Interlock Base and holes of ACW Cover, and tighten up 4pcs of screws through holes of Interlock Base.

INSTRUCTION MANUAL

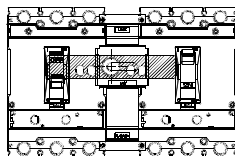
2. MECHANICAL INTERLOCK UNIT OPERATION

2-1. Keep one of the ACWs in OFF position and adjust Interlock Handle right/left side to put the Interlock Bar on the upper part of that ACW handle. The other ACW handle will move freely.

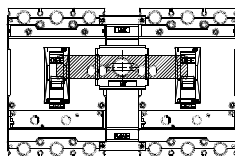
Operations of Mechanical Interlock Unit



Left ACW : ON/OFF is possible.
Right ACW : OFF LOCK



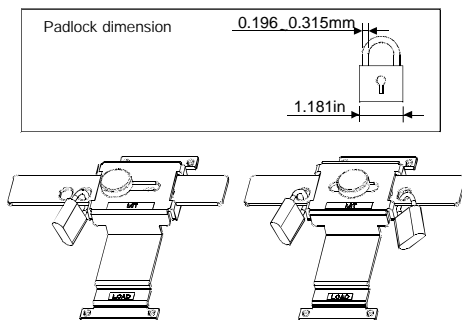
Left MCCB : OFF LOCK,
Right MCCB : ON/OFF is possible



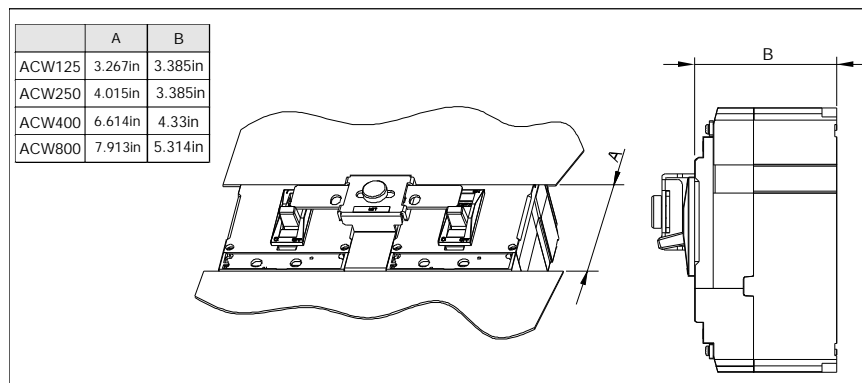
Both ACW : OFF LOCK

2-2. The interlock Bar can be locked at any desired position (as shown on image below).

2-3. The interlock Bar can be locked with 2 Padlocks in case both ACWs are locked in OFF position.



3. Panel cutting



4. Dimension of Installation holes

