

## Motors

Automation

Energy

Transmission and  
Distribution

Coatings

# SYSTEM DRIVE VFD AC MOTORS

1HP - 1500HP TEFC

- 1000:1 Constant Torque
- Powerful
- Reliable
- Flexible



Driving efficiency and sustainability



## System Drive VFD AC Motors

The WEG Systems Drive VFD AC motor raises the bar for customers who demand the best. Benefits such as very high overload and expanded speed range capabilities increase the value of the product for many variable speed applications.

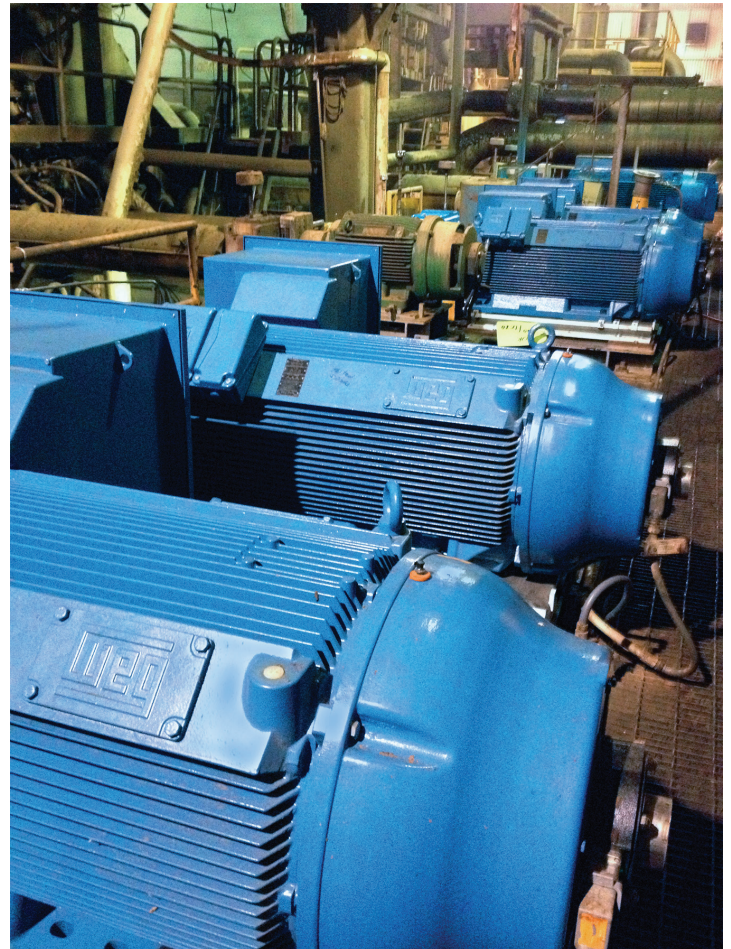
The designs are based on the W22 and H-Line Severe Duty motor platforms for outstanding reliability.

### What makes this a Systems Drive Motor

- Constant torque capability to zero speed in standard NEMA frame size TEFC motor
- High torque designs for wide constant HP capability
- High short term overload capacities can exceed 200%
- 3 NC thermostats on winding
- Drive end shaft grounding available (standard 447T and larger )
- Insulated opposite drive end bearings available (standard 447T and larger)
- Very low noise
- Class I and Class II Division 2 up to 20:1CT to 449T frame (certification on larger ratings upon request)
- VFD rated insulation system exceeds requirements of NEMA MG1 Part 31 standard
- Custom designs for non-standard base speeds/frequencies (i.e. 600RPM base speed with 6-pole design) to replace many DC motor applications without gearing change.

### What makes this a WEG Motor

- Rugged FC200 high strength cast iron construction
- Paint system exceeds 200 hour salt spray test per ASTM B117
- PPLS – Positive Pressure Lubrication System
- All Silicon C4 coated lamination steel for reliability and reparability\* – withstands burnout temperatures of 500C(935F) without loss of insulating properties. This allows the motor to be rewound back to the original efficiency.
- Class F insulation system with mostly Class H components for long life
- Stainless steel nameplate

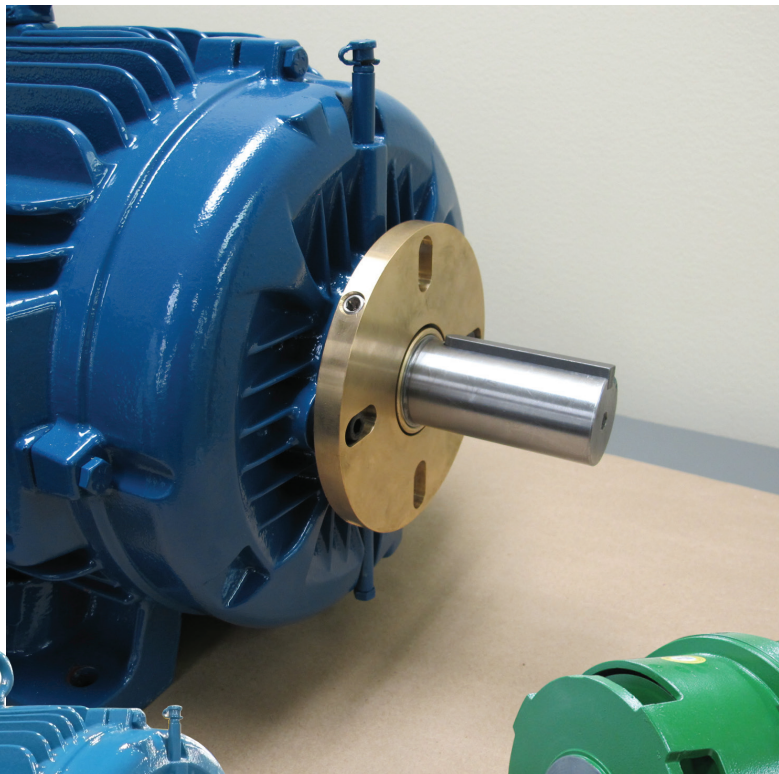


*\*All ratings 254T and larger*

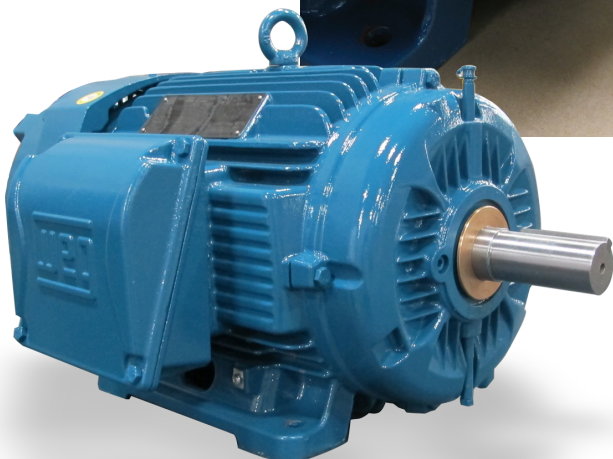


### Optional Features

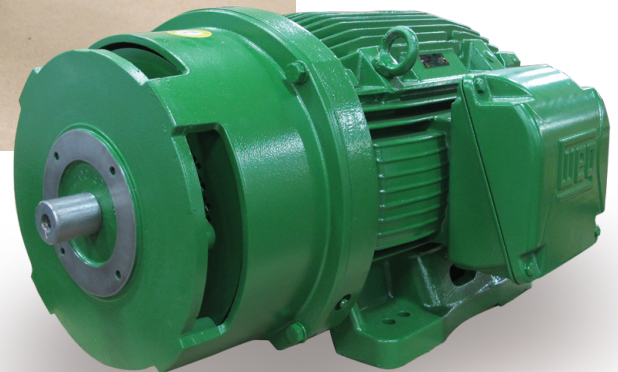
- Class B rise over 4:1CT
- Insulated bearings or bearing hub 445T and smaller
- C-Face Encoder Mounting (ODE)
- TEBC Blower cooling for extended CHP speed range
- Motor mounted Brake
- Space heaters
- RTD's – Winding and Bearing (364T and larger)
- IEEE 841 Features
- Sealed bearings for no maintenance applications
- Shaft Grounding – AEGIS, Standard Carbon, Mill Type Silver graphite, Inpro MGS...
- Many more – All WEG available modifications can be added to your Systems Drive motor



*Mill Duty Shaft Grounding Ring*



*IEEE 841 with Inpro/Seal Isolator*



*ODE 8.5" C-Face*



WEG's scope of solutions is not limited to the products and solutions presented in this brochure.

**Contact WEG for information on additional products and solutions.**

**For WEG's worldwide operations visit our website**



**[www.weg.net](http://www.weg.net)**



 1-800-ASK-4WEG

 [info-us@weg.net](mailto:info-us@weg.net)

 Duluth, GA

USASYSVFD

Information contained herein is subject to change without notice.