

Motors

Automation

Energy

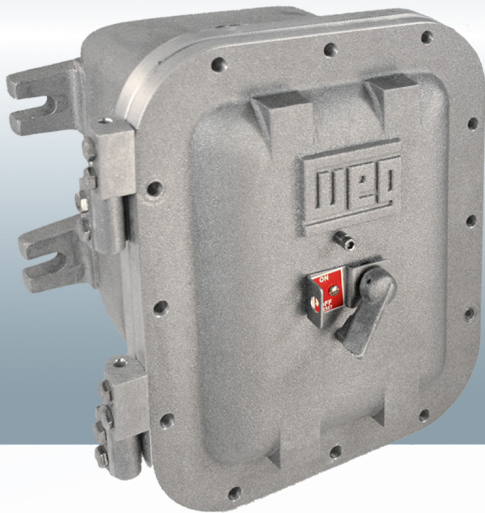
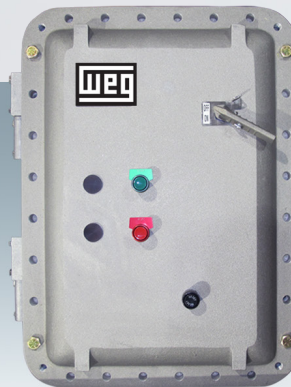
Transmission and
Distribution

Coatings

NEMA 7/9 EXPLOSION PROOF MOTOR STARTERS

MOTOR CONTROL FOR HAZARDOUS AREAS

- WEG quality
- WEG support
- Corrosion resistant body
- Circuit disconnect & short circuit protection



Driving efficiency and sustainability



Explosion Proof Starters

Solutions for the Oil & Gas,
Mining, and Chemical Processing industries

Add a WEG Explosion Proof Motor for a complete solution

WEG ESWX Series NEMA 7/9 Enclosed Starters

Standard Products

- Manual Motor Starters – up to 75 Hp
- Non-Combination Starters – up to 75Hp
- Combination Starters (with circuit breaker)
– up to 150 Hp

Features

- Corrosion resistant, copper free cast aluminum housing
- Watertight 'O' Rings for NEMA 4 applications
- Bolted flange design with cast-on lugs

Motor control for Hazardous Areas

- Class I, Div I, Groups C & D
- Class II, Div I, Groups E, F, & G

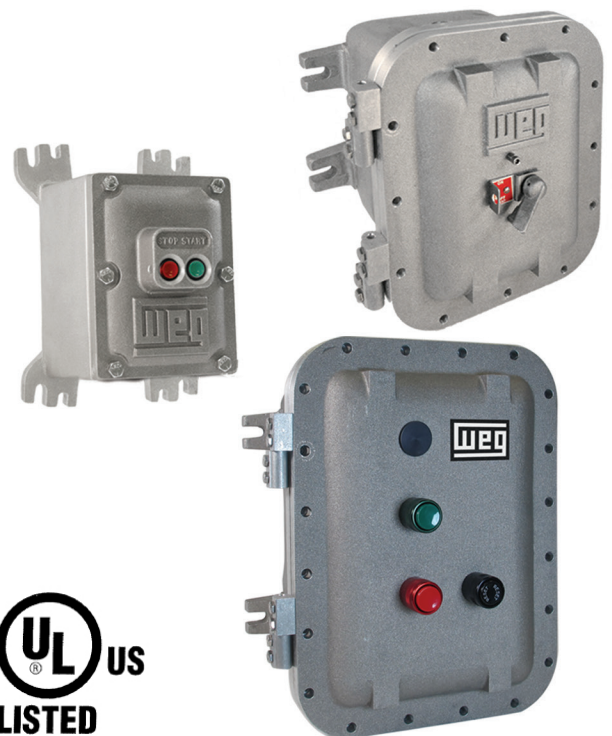


Table of Contents

Overview	4-5
Manual Motor Starter	
Features	6
Product Selection	7
Technical Data	8-9
Accessories	10
Dimensions	18-19
Non-Combination Starters	
Features	11
Product Selection	11-12
Technical Data	12
Accessories	16
Dimensions	20
Combination Starters	
Features	13
Product Selection	13-15
Technical Data	14-15
Accessories / Options	16
Dimensions	21
Custom Controls RFQ Form	17
Controls Line Card	23

Overview

WEG Explosion Proof Motors Starters are designed for motor control in Hazardous and Industrial environments. With our Explosion Proof Motors, WEG can provide a Complete Solution for motor control in the most severe applications.

Types:

- Manual motor starters up to 75 hp
- Non-combination starters up to 75 hp
- Combination starters up to 150 hp

All Standard Products



Hazardous Areas:

Class I, Div I, Groups C & D --- Explosive Gas or Vapor
Class II, Div I, Groups E, F, G --- Explosive Dust
Class III --- Potentially Explosive Fiber / Flyings
cULus Listed

Industries:

Oil & Gas, Mining, Grain, and Chemical Processing industries.

Applications:

Pump Skids, fans, blowers, pumps, air compressors in locations such as oil & gas processing, dyeing plants, paint & varnish factories, flour & feed mills, grain elevators, coal & coke plants and other locations that require a starter to meet the National Electric Code for hazardous locations and explosion-proof duty.

Enclosure Specifications

- Nema 7/9 rated housing
- Corrosion resistant, copper free cast aluminum alloy body
- Watertight gasket for NEMA 4 applications
- Durable cast on lugs for secure mounting
- Bolted flange design
- Lockout capability on cover for manual starters & circuit disconnect handle
- Hinged door for easier access (8 x 12 & larger)
- Removable lifting eye bolts (large sizes)
- Optional Breather / Drain



ESWX-M Series

ESWX-M Series Manual starters

- High short-circuit interrupting rating – up to 50kA @ 480V
- Thermal overload protection Class 10
- Phase loss sensitivity protection
- Ambient temperature compensation -4°F +140°F (-20°C +60°C)
- Lockout capability
- Snap-in accessories
- Finger safe protected terminals
- Suitable for motor disconnect applications
- UL Type-E self protected combination starter (available on request)



ESWX Series Non-Combination starters

- Starter includes contactor plus overload relay
- Standard versions available: Reset only or Start, Stop, and Reset pushbuttons
- (1) additional pilot hole in cover for HOA or Pilot Light (optional)
- 1 size enclosure for 3 – 75 hp

- Starter includes contactor plus overload relay
- Molded Case Circuit Breaker with disconnect
- Available with or without control power transformer
- Start Stop Reset buttons (Standard)
- (2) additional pilot holes in cover for HOA or Pilot Lights (optional)

Non-Combination & Combination starters include:

- High strength steel cover bolts (zinc plated & coated)
- ½" NPT entry for optional Breather / Drain
- Mounting pan

All WEG starters include:

- Thermal overload protection Class 10
- Phase loss sensitivity protection
- Ambient temperature compensation
- Snap-in accessories

ESWCX Series Combination starters

Custom Panels also available on request.



The information contained in this brochure is based on our experience to date. Every effort is made to ensure the information is accurate and reliable. Data is subject to change without notice. Certain modifications are available & will continue to meet the standards, certifications, & performance of the product stated within.

Installers and end users need to verify the product they are using meets their local electrical codes & verify it is suited for use in their application environment.

All weights & dimensions are approximate and are believed to be accurate at the time of this printing.



Explosion Proof Manual Motor Starters

Motor Control for Hazardous Areas: Class I, Groups C & D -
Class II, Groups E, F, G

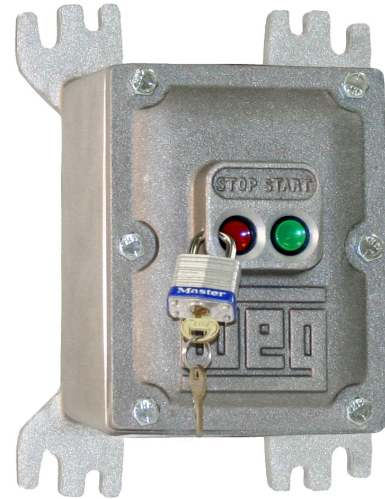
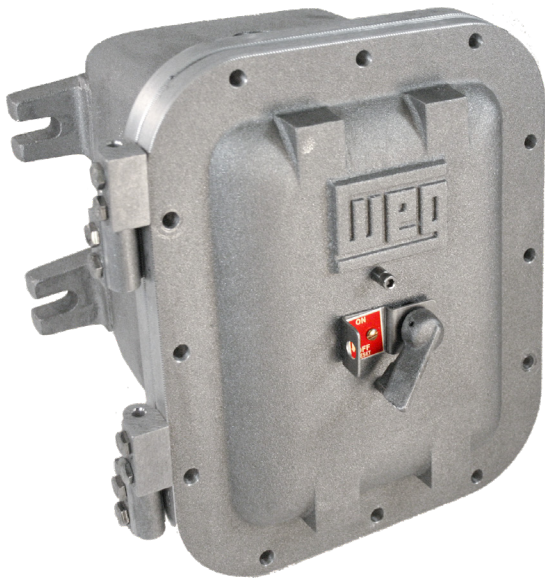
WEG Explosion Proof Motors Starters are the perfect compliment for motor control in Hazardous and Industrial environments. Applications include Oil & Gas, Mining, and Chemical Processing industries.

ESWX-M Series

- High short-circuit interrupting rating – up to 50kA @ 480V
- Thermal overload protection Class 10
- Phase loss sensitivity protection
- Ambient temperature compensation -4°F +140°F (-20°C +60°C)
- Lockable rotary handle mechanism for disconnect
- Snap-in accessories
- Finger safe protected terminals
- Test trip feature
- Manual Motor Starters
- Suitable for motor disconnect applications
- UL Type-E self protected combination starter (available on request)

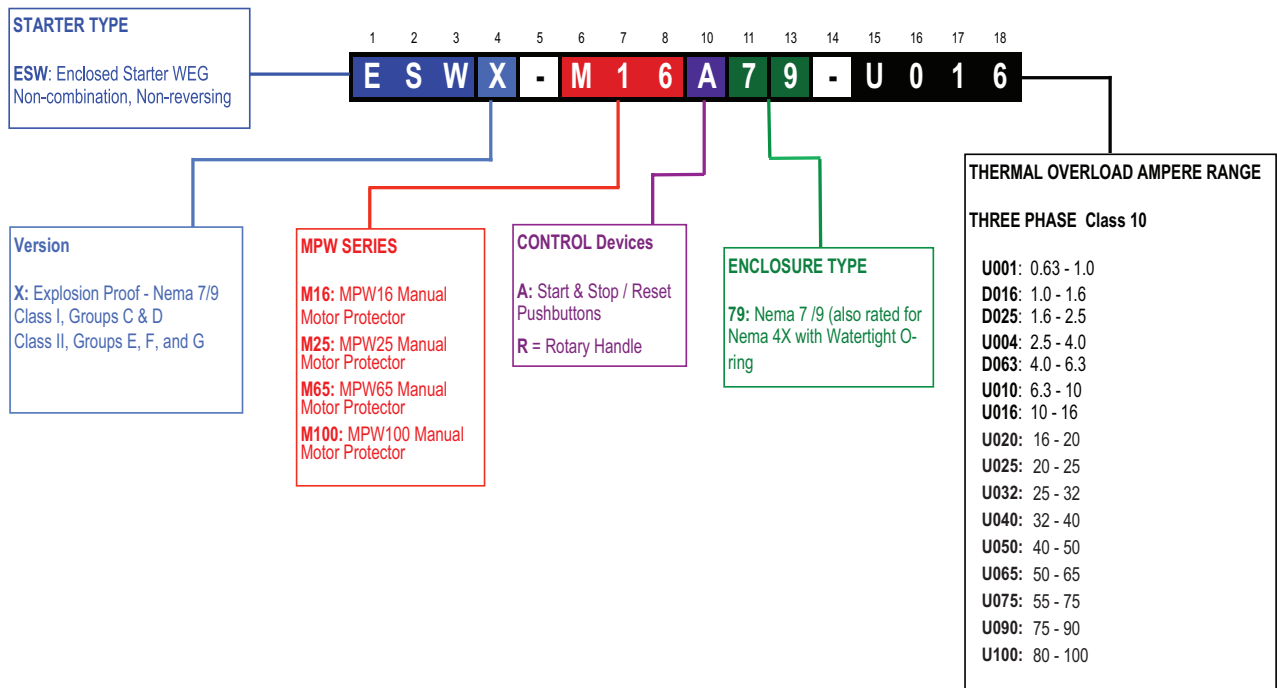
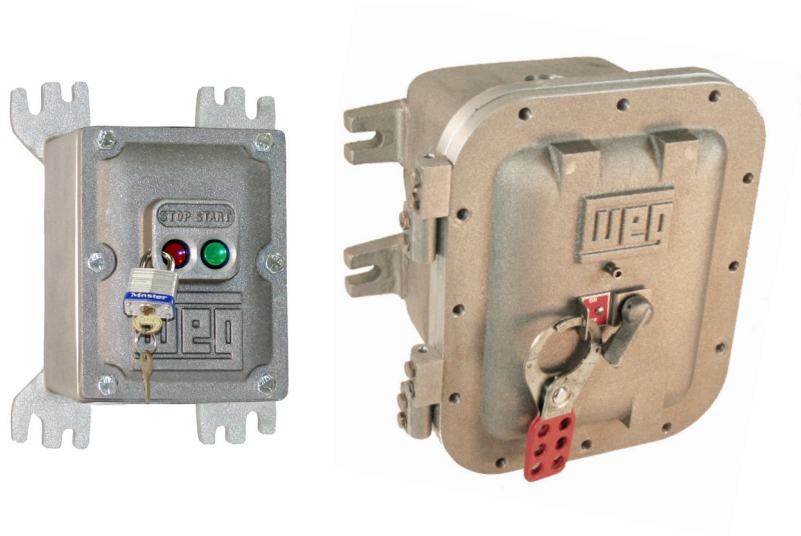


[Accessories available for some customization \(page 10\)](#)



Enclosed Manual Motor Starters for Hazardous Areas ESWX Series

Explosion Proof Part Numbers





Explosion Proof Manual Motor Starters

Motor Control for Hazardous Areas: Class I, Groups C & D - Class II, Groups E, F, G

Enclosure Specifications

- Versatile mounting format
- Corrosion resistant, copper free aluminum alloy body
- Bolted flange design
- Durable cast on lugs
- Watertight 'O' Rings for NEMA 4X applications
- Lockout device on cover
- Rotary Handle units include hinged door for easier access
- Nema 4X / 7 / 9 housing
- ON/OFF - Rotary Handle or Start/Stop - Push buttons
- Rotary Lockable handle
- Available up to 75 hp @ 460 Vac – 100 amps



ESWX-M16 Series

- Versatile mounting
- Nema 4X / 7 / 9 housing
- Start & Stop /Reset pushbuttons
- Lockable in OFF position
- Available up to 10 hp @ 460 Vac – 16 amps



ESWX-M16 - PRODUCT SELECTION

Max 3 Phase UL HP			Thermal Setting	Short-Circuit interruption capacity		Catalog Number	List Price	Multiplier Symbol	Box
Three Phase				[A]	480 Vac				
230V	460V	575V							
-	1/2	1/2	0.63 - 1.0	50kA	10kA	ESWX-M16A79-U001	\$1,595.00	Z33	X01
-	3/4	3/4	1.0 - 1.6	50kA	10kA	ESWX-M16A79-D016	\$1,595.00	Z33	
1/2	1	1 1/2	1.6 - 2.5	50kA	10kA	ESWX-M16A79-D025	\$1,595.00	Z33	
3/4	2	3	2.5 - 4.0	50kA	10kA	ESWX-M16A79-U004	\$1,595.00	Z33	
1 1/2	3	5	4.0 - 6.3	50kA	10kA	ESWX-M16A79-D063	\$1,595.00	Z33	
3	5	7 1/2	6.3 - 10	50kA	5kA	ESWX-M16A79-U010	\$1,595.00	Z33	
5	10	10	10 - 16	30kA	5kA	ESWX-M16A79-U016	\$1,595.00	Z33	



Explosion Proof Manual Motor Starters

ESWX-M25 Series

- Nema 4X / 7 / 9 housing
- Hinged Cover for easy access
- ON / OFF – Rotary Handle
- Lockable in OFF position
- Available up to 20 hp @ 460 Vac – 32 amps



ESWX-M25 - PRODUCT SELECTION

Max 3 Phase UL HP			Thermal Setting	Short-Circuit interruption capacity		Catalog Number	List Price	Multiplier Symbol	Box
Three Phase				[A]	480 Vac				
230V	460V	575V							
-	1/2	1/2	0.63 - 1.0	50kA	25kA	ESWX-M25R79-U001	\$2,200.00	Z33	X02
-	3/4	3/4	1.0 - 1.6	50kA	25kA	ESWX-M25R79-D016	\$2,200.00	Z33	
1/2	1	1 1/2	1.6 - 2.5	50kA	25kA	ESWX-M25R79-D025	\$2,200.00	Z33	
3/4	2	3	2.5 - 4.0	50kA	25kA	ESWX-M25R79-U004	\$2,200.00	Z33	
1 1/2	3	5	4.0 - 6.3	50kA	25kA	ESWX-M25R79-D063	\$2,200.00	Z33	
3	5	7 1/2	6.3 - 10	50kA	25kA	ESWX-M25R79-U010	\$2,200.00	Z33	
5	10	15	10 - 16	50kA	25kA	ESWX-M25R79-U016	\$2,200.00	Z33	
7 1/2	15	15	16 - 20	50kA	25kA	ESWX-M25R79-U020	\$2,200.00	Z33	
7 1/2	15	20	20 - 25	50kA	25kA	ESWX-M25R79-U025	\$2,200.00	Z33	
10	20	25	25 - 32	42kA	25kA	ESWX-M25R79-U032	\$2,200.00	Z33	

ESWX-M65 - PRODUCT SELECTION

ESWX-M65 Series

- Nema 4X / 7 / 9 housing
- Hinged Cover for easy access
- ON / OFF – Rotary Handle
- Lockable in OFF position
- Available up to 50 hp @ 460 Vac – 65 amps

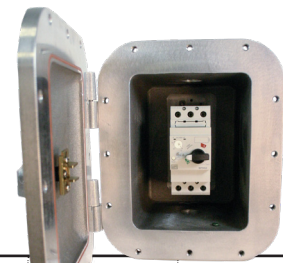


Max 3 Phase UL HP			Thermal Setting	Short-Circuit interruption capacity		Catalog Number	List Price	Multiplier Symbol	Box
Three Phase				[A]	480 Vac				
230V	460V	575V							
15	25	30	32 - 40	35kA	10kA	ESWX-M65R79-U040	\$2,600.00	Z33	X02
15	30	40	40 - 50	35kA	10kA	ESWX-M65R79-U050	\$2,600.00	Z33	
20	50	60	50 - 65	35kA	10kA	ESWX-M65R79-U065	\$2,600.00	Z33	

ESWX-M100 - PRODUCT SELECTION

ESWX-M100 Series

- Nema 4X / 7 / 9 housing
- Hinged Cover for easy access
- ON / OFF – Rotary Handle
- Lockable in OFF position
- Available up to 75 hp @ 460 Vac – 100 amps



Max 3 Phase UL HP			Thermal Setting	Short-Circuit interruption capacity		Catalog Number	List Price	Multiplier Symbol	Box
Three Phase				[A]	480 Vac				
230V	460V	575V							
25	50	60	55 - 75	50kA	10kA	ESWX-M100R79-U075	\$3,350.00	Z33	X03
30	60	75	70 - 90	50kA	10kA	ESWX-M100R79-U090	\$3,350.00	Z33	
30	75	100	80 - 100	50kA	10kA	ESWX-M100R79-U100	\$3,350.00	Z33	



Data is subject to change without notice.



Explosion Proof Manual Motor Starters

Accessories

ACCESSORIES FOR MPW16 / 25 / 65 - Summary

Description	Catalog Number	List Price	Multiplier Symbol
Auxiliary Contact Blocks			
1NO&1NC auxiliary contact block front mounting - 250Vmax.	ACBF-11	\$20	Z4
1NO&1NC auxiliary contact block left side mounting - 600Vmax.	ACBS-11	\$22	Z4
2NO Auxiliary contact block left side mounting - 600Vmax.	ACBS-20	\$22	Z4
2NC Auxiliary contact block left side mounting - 600Vmax.	ACBS-02	\$22	Z4
Under Voltage and Shunt Block Releases			
Shunt release block right side mounting - 20-24V 50/60Hz	SRMP D51	\$56	Z4
Shunt release block right side mounting - 100-127V 50/60Hz	SRMP D59	\$56	Z4
Shunt release block right side mounting - 200-240V 50/60Hz	SRMP D65	\$56	Z4
Under voltage release block right side mounting - 24V 60Hz	URMP V05	\$56	Z4
Under voltage release block right side mounting - 120V 60Hz	URMP V18	\$56	Z4
Under voltage release block right side mounting - 208V 60Hz	URMP V23	\$56	Z4
Under voltage release block right side mounting - 240V 60Hz	URMP V30	\$56	Z4
Under voltage release block right side mounting - 480V 60Hz	URMP V47	\$56	Z4

ACCESSORIES FOR MPW100 - Summary

Description	Catalog Number	List Price	Multiplier Symbol
Auxiliary Contact Blocks			
1NO&1NC auxiliary contact block front mounting - 250Vmax.	ACBF-11 MPW100	\$20	Z4
1NO&1NC auxiliary contact block left side mounting - 600Vmax.	ACBS-11 MPW100	\$22	Z4
2NO Auxiliary contact block left side mounting - 600Vmax.	ACBS-20 MPW100	\$22	Z4
2NC Auxiliary contact block left side mounting - 600Vmax.	ACBS-02 MPW100	\$22	Z4
Under Voltage and Shunt Block Releases			
Shunt release block right side mounting - 120V 50/60Hz	SRMP V18 MPW100	\$56	Z4
Shunt release block right side mounting - 240-260V 60Hz	SRMP V33 MPW100	\$56	Z4
Under voltage release block right side mounting - 120V 60Hz	URMP V18 MPW100	\$56	Z4
Under voltage release block right side mounting - 240V 60Hz	URMP V33 MPW100	\$56	Z4
Under voltage release block right side mounting - 460V 60Hz	URMP V43 MPW100	\$56	Z4

Enclosed Non-Combination Starters for Hazardous Areas

Explosion Proof Part Numbers

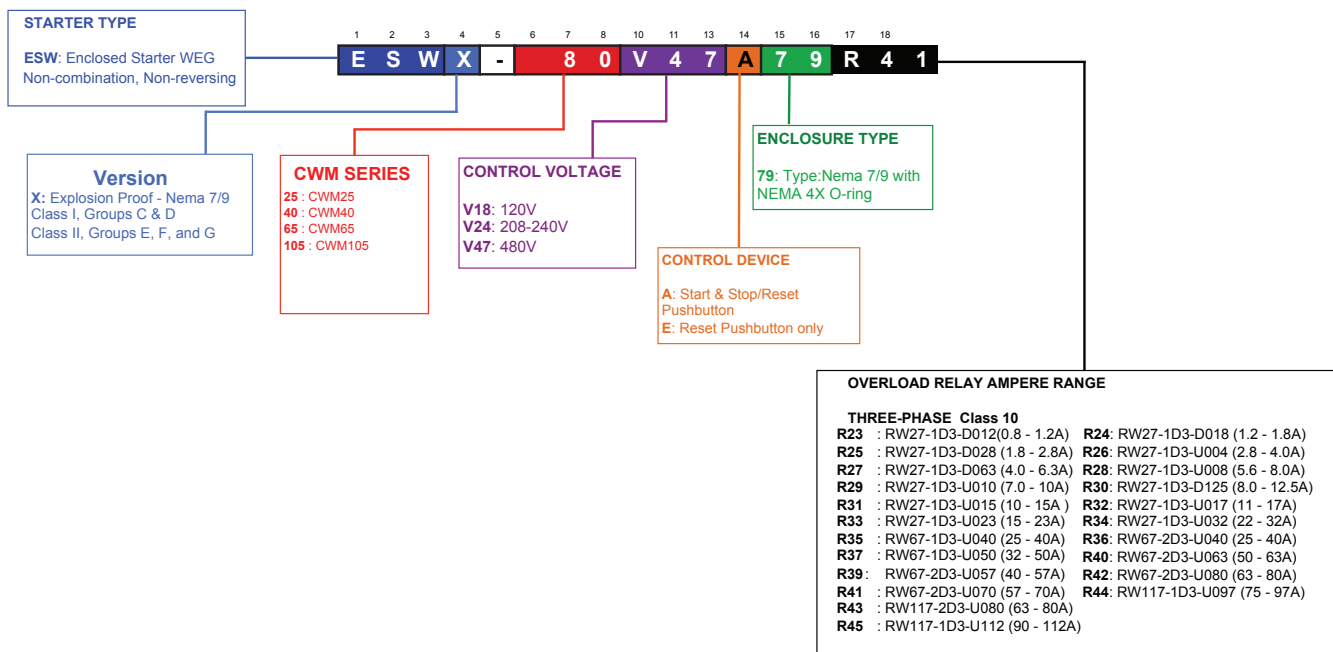
ESWX Series

Specifications

- Copper free aluminum alloy body
- Bolted flange design
- Durable cast on lugs
- Watertight 'O' Rings for NEMA 4 applications
- Hinged door for easier access
- NEMA 7 / 9 housing
- Class I, Groups C & D - Class II, Groups E, F, G
- Starter includes contactor plus overload relay
- Start Stop Reset buttons (Standard) HOA or Pilot Light (optional)
- Breather / Drain (optional)
- Available up to 75 hp @ 460 Vac – 100 amps
- NEMA rated starters available from size 00 to size 3 on request



Enclosed Starter Part Numbers - ESWX SERIES





Non-Combination Starters for use in Hazardous Areas – ESWX Series

NEMA 7/9 Enclosure – Three Phase

- Motor Control: Magnetic Contractor
- Overload Protection: Thermal Overload Relay
- Control Devices: START STOP RESET Pushbuttons
 - H.O.A. and Pilot Lights available on request
- Cast Aluminum NEMA 7/9 housing with NEMA 4 gasket
 - Breather & Drain available on request

ESWX Series - Non-combination Across The Line Starter for use in Hazardous Areas

ENCLOSURE TYPE NEMA 7/9

Max. UL 3 Phase Horsepower				Box	Setting Range	Coil Voltage	RESET only		START + STOP + RESET		Multiplier Symbol
200V	230V	460V	575V				Catalog Number	List Price	Catalog Number	List Price	
-	1/3	1/2	-	X04	0.8 - 1.2	120	ESWX-25V18E79-R23	\$2,900	ESWX-25V18A79-R23	\$3,400	Z33
						208-240	ESWX-25V24E79-R23		ESWX-25V24A79-R23		
						480	ESWX-25V47E79-R23		ESWX-25V47A79-R23		
-	-	1	1	X04	1.2 - 1.8	120	ESWX-25V18E79-R24	\$2,900	ESWX-25V18A79-R24	\$3,400	Z33
						480	ESWX-25V47E79-R24		ESWX-25V47A79-R24		
						120	ESWX-25V18E79-R25		ESWX-25V18A79-R25		
1/2	3/4	1-1/2	2	X04	1.8 - 2.8	208-240	ESWX-25V24E79-R25	\$2,900	ESWX-25V24A79-R25	\$3,400	Z33
						480	ESWX-25V47E79-R25		ESWX-25V47A79-R25		
						120	ESWX-25V18E79-R26		ESWX-25V18A79-R26		
1	1	2	3	X04	2.8 - 4.0	208-240	ESWX-25V24E79-R26	\$2,900	ESWX-25V24A79-R26	\$3,400	Z33
						480	ESWX-25V47E79-R26		ESWX-25V47A79-R26		
						120	ESWX-25V18E79-R27		ESWX-25V18A79-R27		
1-1/2	1-1/2	3	5	X04	4.0 - 6.3	208-240	ESWX-25V24E79-R27	\$2,900	ESWX-25V24A79-R27	\$3,400	Z33
						480	ESWX-25V47E79-R27		ESWX-25V47A79-R27		
						120	ESWX-25V18E79-R28		ESWX-25V18A79-R28		
2	2	5	-	X04	5.6 - 8.0	208-240	ESWX-25V24E79-R28	\$2,900	ESWX-25V24A79-R28	\$3,400	Z33
						480	ESWX-25V47E79-R28		ESWX-25V47A79-R28		
						120	ESWX-25V18E79-R29		ESWX-25V18A79-R29		
3	3	-	7-1/2	X04	7.0 - 10	208-240	ESWX-25V24E79-R29	\$2,900	ESWX-25V24A79-R29	\$3,400	Z33
						480	ESWX-25V47E79-R29		ESWX-25V47A79-R29		
						120	ESWX-25V18E79-R30		ESWX-25V18A79-R30		
-	-	7-1/2	10	X04	8.0 - 12.5	480	ESWX-25V47E79-R30	\$2,900	ESWX-25V47A79-R30	\$3,400	Z33
						120	ESWX-25V18E79-R32		ESWX-25V18A79-R32		
						208-240	ESWX-25V24E79-R32		ESWX-25V24A79-R32		
5	5	10	15	X04	11 - 17	480	ESWX-25V47E79-R32	\$2,900	ESWX-25V47A79-R32	\$3,400	Z33
						120	ESWX-25V18E79-R33		ESWX-25V18A79-R33		
						208-240	ESWX-25V24E79-R33		ESWX-25V24A79-R33		
7-1/2	7-1/2	15	-	X04	15 - 23	480	ESWX-25V47E79-R33	\$2,900	ESWX-25V47A79-R33	\$3,400	Z33
						120	ESWX-40V18E79-R34		ESWX-40V18A79-R34		
						208-240	ESWX-40V24E79-R34		ESWX-40V24A79-R34		
10	10	20	25	X04	22 - 32	480	ESWX-40V47E79-R34	\$2,950	ESWX-40V47A79-R34	\$3,500	Z33
						120	ESWX-40V18E79-R35		ESWX-40V18A79-R35		
						208-240	ESWX-40V24E79-R35		ESWX-40V24A79-R35		
10	15	30	-	X04	25 - 40	480	ESWX-40V47E79-R35	\$2,950	ESWX-40V47A79-R35	\$3,500	Z33
						120	ESWX-40V18E79-R37		ESWX-40V18A79-R37		
						208-240	ESWX-40V24E79-R37		ESWX-40V24A79-R37		
15	15	30	40	X04	32 - 50	480	ESWX-40V47E79-R37	\$3,050	ESWX-40V47A79-R37	\$3,600	Z33
						120	ESWX-65V18E79-R39		ESWX-65V18A79-R39		
						208-240	ESWX-65V24E79-R39		ESWX-65V24A79-R39		
20	20	40	50	X04	40 - 57	480	ESWX-65V47E79-R39	\$3,050	ESWX-65V47A79-R39	\$3,600	Z33
						120	ESWX-65V18E79-R41		ESWX-65V18A79-R41		
						208-240	ESWX-65V24E79-R41		ESWX-65V24A79-R41		
-	25	50	60	X04	57 - 70	480	ESWX-65V47E79-R41	\$3,050	ESWX-65V47A79-R41	\$3,600	Z33
						120	ESWX-105V18E79-R43		ESWX-105V18A79-R43		
						208-240	ESWX-105V24E79-R43		ESWX-105V24A79-R43		
25	30	60	75	X04	63 - 80	480	ESWX-105V47E79-R43	\$3,100	ESWX-105V47A79-R43	\$3,700	Z33
						120	ESWX-105V18E79-R44		ESWX-105V18A79-R44		
						208-240	ESWX-105V24E79-R44		ESWX-105V24A79-R44		
30	-	75	-	X04	75 - 97	480	ESWX-105V47E79-R44	\$3,100	ESWX-105V47A79-R44	\$3,700	Z33
						120	ESWX-105V18E79-R45		ESWX-105V18A79-R45		
						208-240	ESWX-105V24E79-R45		ESWX-105V24A79-R45		

Notes:

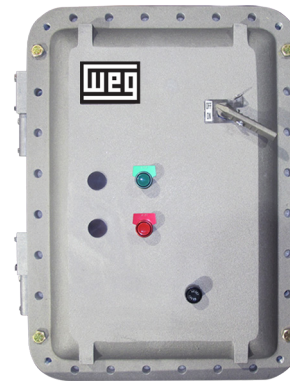
- Overload Relay dial must be set with FLA of the motor
- 3-phase starters with 120V coil are pre-wired for separate control
- 3-phase starters can be wired for single-phase applications



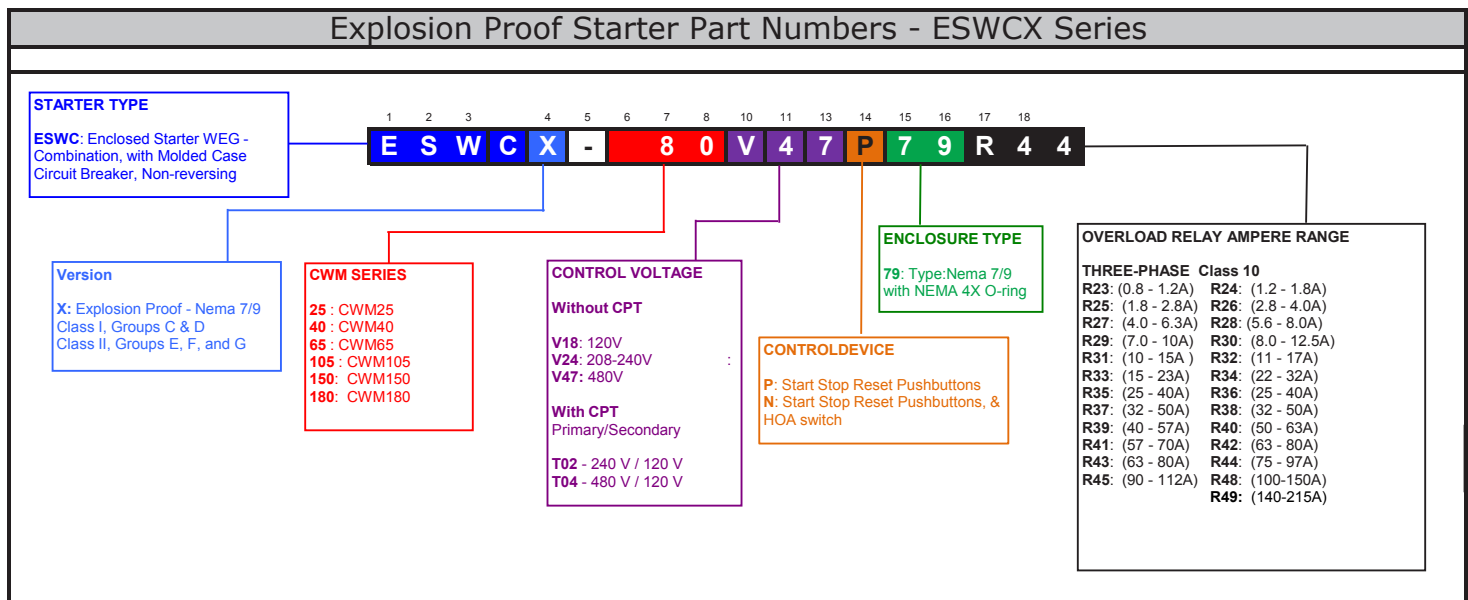
Combination Starters

NEMA 7/9 Enclosure – Three Phase

- Available with or without CPT (control power transformer)
- Branch Disconnect: Rotary thru the door handle
- Short Circuit Protection: Molded Case Circuit Breaker
- Motor Control: Magnetic Contractor
- Overload Protection: Thermal Overload Relay
- Control Devices: START STOP RESET Pushbuttons
 - H.O.A. and Pilot Lights available on request
- Cast Aluminum NEMA 7/9 housing with NEMA 4 gasket
 - Breather & Drain available on request



Part # Structure and Description





Combination Starters for use in Hazardous Areas – ESWCX Series

NEMA 7/9 Enclosure – Three Phase

Three Phase with Control Power Transformer

- Branch Disconnect: Rotary thru the door handle
- Short Circuit Protection: Molded Case Circuit Breaker
- Motor Control: Magnetic Contractor
- Overload Protection: Thermal Overload Relay
- Control Devices: START STOP RESET Pushbuttons
 - H.O.A. and Pilot Lights available on request
- Cast Aluminum NEMA 7/9 housing with NEMA 4 gasket
 - Breather & Drain available on request

ESWCX Series - Combination Type-C Across The Line Starter for use in Hazardous Areas									
Max. 3 Phase Hp Motors				Overload Setting Range	AC Control Voltage (pri. / sec.)	Aluminum NEMA 7/9			
200V	230V	460V	575V			Catalog Number	List Price	Box Size	Multiplier Symbol
1-1/2	1-1/2	3	5	4 - 6.3	240 / 120	ESWCX-25T02P79-R27	\$9,495	CX-1	Z33
					480 / 120	ESWCX-25T04P79-R27			
2	3	5	5	5.6 - 8.0	240 / 120	ESWCX-25T02P79-R28	\$9,495	CX-1	Z33
					480 / 120	ESWCX-25T04P79-R28			
3	3	7 1/2	7-1/2	8.0 - 13	240 / 120	ESWCX-25T02P79-R30	\$9,495	CX-1	Z33
					480 / 120	ESWCX-25T04P79-R30			
5	5	10	15	11 - 17	240 / 120	ESWCX-25T02P79-R32	\$9,495	CX-1	Z33
					480 / 120	ESWCX-25T04P79-R32			
5	7-1/2	15	15	15 - 23	240 / 120	ESWCX-25T02P79-R33	\$9,495	CX-1	Z33
					480 / 120	ESWCX-25T04P79-R33			
7-1/2	10	20	25	22 - 32	240 / 120	ESWCX-40T02P79-R34	\$9,595	CX-1	Z33
					480 / 120	ESWCX-40T04P79-R34			
10	15	25	30	25 - 40	240 / 120	ESWCX-40T02P79-R35	\$9,595	CX-1	Z33
					480 / 120	ESWCX-40T04P79-R35			
15	15	30	40	32 - 50	240 / 120	ESWCX-40T02P79-R37	\$9,695	CX-1	Z33
					480 / 120	ESWCX-40T04P79-R37			
15	20	40	50	40 - 57	240 / 120	ESWCX-65T02P79-R39	\$9,695	CX-1	Z33
					480 / 120	ESWCX-65T04P79-R39			
20	25	50	60	57 - 70	240 / 120	ESWCX-65T02P79-R41	\$9,695	CX-1	Z33
					480 / 120	ESWCX-65T04P79-R41			
25	30	60	75	63 - 80	240 / 120	ESWCX-105T02P79-R43	\$9,895	CX-1	Z33
					480 / 120	ESWCX-105T04P79-R43			
30	40	75	100	75 - 97	240 / 120	ESWCX-105T02P79-R44	\$9,895	CX-1	Z33
					480 / 120	ESWCX-105T04P79-R44			
40	60	100	125	100 - 150	240 / 120	ESWCX-150T02P79-R48	\$17,990	CX-2	Z33
					480 / 120	ESWCX-150T04P79-R48			
50	60	125	150	140 - 215	240 / 120	ESWCX-150T02P79-R49	\$17,990	CX-2	Z33
					480 / 120	ESWCX-150T04P79-R49			
60	75	150	200	140 - 215	240 / 120	ESWCX-180T02P79-R49	\$18,200	CX-2	Z33
					480 / 120	ESWCX-180T04P79-R49			
75	100	200	250	200	240 / 120	(available on request)	N/A	CX-3	Z33
					480 / 120				
100	125	250	300	275	240 / 120	(available on request)	N/A	CX-3	Z33
					480 / 120				

Options & Adder to List Price:

For H.O.A. change letter P to N and add \$455.00 to list price.

For Breather/Drain add letter B to end of part number and add \$250.00 to list price.

For Pilot Light add \$565.00 to list price and consult factory for assistance.



Combination Starters for use in Hazardous Areas – ESWCX Series

NEMA 7/9 Enclosure – Three Phase

Three Phase without Control Power Transformer

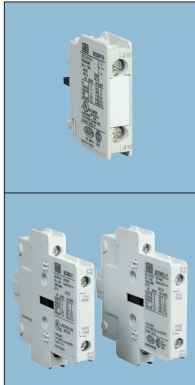
ESWCX Series - Combination Type-C Across The Line Starter for use in Hazardous Areas									
Max. 3 Phase Hp Motors				Overload Setting Range	Coil Voltage	Aluminum NEMA 7/9			
200V	230V	460V	575V			Catalog Number	List Price	Box Size	Multiplier Symbol
1-1/2	1-1/2	3	5	4 - 6.3	120	ESWCX-25V18P79-R27	\$9,150	CX-1	Z33
					208-240	ESWCX-25V24P79-R27			
					480	ESWCX-25V47P79-R27			
2	3	5	5	5.6 - 8.0	120	ESWCX-25V18P79-R28	\$9,150	CX-1	Z33
					208-240	ESWCX-25V24P79-R28			
					480	ESWCX-25V47P79-R28			
3	3	7 1/2	7-1/2	8.0 - 13	120	ESWCX-25V18P79-R30	\$9,150	CX-1	Z33
					208-240	ESWCX-25V24P79-R30			
					480	ESWCX-25V47P79-R30			
5	5	10	15	11 - 17	120	ESWCX-25V18P79-R32	\$9,150	CX-1	Z33
					208-240	ESWCX-25V24P79-R32			
					480	ESWCX-25V47P79-R32			
5	7-1/2	15	15	15 - 23	120	ESWCX-25V18P79-R33	\$9,150	CX-1	Z33
					208-240	ESWCX-25V24P79-R33			
					480	ESWCX-25V47P79-R33			
7-1/2	10	20	25	22 - 32	120	ESWCX-40V18P79-R34	\$9,250	CX-1	Z33
					208-240	ESWCX-40V24P79-R34			
					480	ESWCX-40V47P79-R34			
10	15	25	30	25 - 40	120	ESWCX-40V18P79-R35	\$9,250	CX-1	Z33
					208-240	ESWCX-40V24P79-R35			
					480	ESWCX-40V47P79-R35			
15	15	30	40	32 - 50	120	ESWCX-40V18P79-R37	\$9,350	CX-1	Z33
					208-240	ESWCX-40V24P79-R37			
					480	ESWCX-40V47P79-R37			
15	20	40	50	40 - 57	120	ESWCX-65V18P79-R39	\$9,350	CX-1	Z33
					208-240	ESWCX-65V24P79-R39			
					480	ESWCX-65V47P79-R39			
20	25	50	60	57 - 70	120	ESWCX-65V18P79-R41	\$9,350	CX-1	Z33
					208-240	ESWCX-65V24P79-R41			
					480	ESWCX-65V47P79-R41			
25	30	60	75	63 - 80	120	ESWCX-105V18P79-R43	\$9,550	CX-1	Z33
					208-240	ESWCX-105V24P79-R43			
					480	ESWCX-105V47P79-R43			
30	40	75	100	75 - 97	120	ESWCX-105V18P79-R44	\$9,550	CX-1	Z33
					208-240	ESWCX-105V24P79-R44			
					480	ESWCX-105V47P79-R44			
40	60	100	125	100 - 150	120	ESWCX-150V18P79-R48	\$17,660	CX-2	Z33
					208-240	ESWCX-150V24P79-R48			
					480	ESWCX-150V47P79-R48			
50	60	125	150	140 - 215	120	ESWCX-150V18P79-R49	\$17,660	CX-2	Z33
					208-240	ESWCX-150V24P79-R49			
					480	ESWCX-150V47P79-R49			
60	75	150	200	140 - 215	120	ESWCX-180V18P79-R49	\$17,810	CX-2	Z33
					208-240	ESWCX-180V24P79-R49			
					480	ESWCX-180V47P79-R49			
75	100	200	250	200	120	(available on request)	N/A	CX-3	Z33
					208-240				
					480				
100	125	250	300	275	120	(available on request)	N/A	CX-3	Z33
					208-240				
					480				



Accessories

Controls


IEC Contactors - CWM Series



Auxiliary Contacts Block						
Location/Description	Mounting on Contactors	Auxiliary Contacts		Catalog Number	List Price	Multiplier Symbol
		N.O.	N.C.			
Front Mounting	CWM9...105 CWM9N...95N	1	0	BCXMF10	\$10	Z1
Front Mounting		0	1	BCXMF01	\$10	Z1
Front Mounting, Early Make		1	0	BCXMF A10	\$13	Z1
Front Mounting, Late Break		0	1	BCXMF R01	\$13	Z1
Side Mounting	CWM9...CWM300 CWM9N...300N	1	1	BCXML11	\$22	Z1
Side Mounting		2	0	BCXML20	\$22	Z1
Side Mounting, Second Block		1	1	BCXMRL11	\$22	Z1
Side Mounting, Second Block		2	0	BCXMRL20	\$22	Z1

Maximum # of added auxiliary contacts per contactor frame size: Note that side mountable version has 2 aux. contacts per block.
CWM9...25 = 4 aux. contacts; CWM32...40 = 6 aux. contacts; CWM50...300E = 8 aux. contacts.

ESW_X SERIES - Factory Installed Options

Cover mounted pilot devices		
Description	Details	
Momentary Pushbuttons	Colors available	RED, GREEN, BLACK
Dual Pushbutton (momentary)	Square bezel	2 buttons populate 1 hole (space saving)
Maintained Contact unit	Square bezel	2 buttons populate 1 hole (space saving)
Mushroom Head pushbutton 1 3/4" dia.	Colors available	RED, GREEN
Selector Switches	2 or 3 position	Maintained or Momentary
Keylock Selector Switches	2 or 3 position	Maintained or Momentary
Contact blocks	Versions available	1 NO, 1 NC, 1 NO + 1 NC, 2 NO, 2 NC
Guarded LED Pilot Lights	Colors available	RED, AMBER, GREEN, WHITE, BLUE
	Voltage available	120 vac (std), contact factory for other voltages
Legend Plates	Anodized aluminum	standard marking & custom plates
	Class I, Groups C & D Class II, Groups E, F, & G NEMA 4, 7, & 9	

Enclosure mounted devices

Description	Details	
Combination Breather / Drain	Stainless Steel	Install in top as breather, install in bottom as drain
	UL Standard 886	

Custom Panels available on request. Please contact WEG for details and specifications.



DATA WORKSHEET and REQUEST FOR QUOTE

Today's Date:

TSS		Rep		Need Quote By	
TAM		ASE		Requested Ship Date	

1. CUSTOMER INFO:

1.1 Company Name		1.3 Customer Phone/Fax	
1.2 Contact Name		1.4 End User Name	

2. SIZING:

2.1 Motor HP & RPM	
2.2 Motor FLA (Full Load Amps)	
2.3 Service Factor	

3. POWER & WIRING:

3.1 Single-Phase		3.2 Three-Phase	
3.3 Incoming Voltage [V]		3.4 Frequency [Hz]	
3.5 Portable Generator Power? YES or NO			

4. APPLICATION & ENVIRONMENT:

4.1 Replacing standard NEMA sizes? YES or NO. Specify current NEMA size							
4.2 Full Voltage		4.3 Wye-Delta		4.4 Part Winding		4.5 Non-Reversing	
4.7 Specify Maximum number of Starts per hour							
4.8 Unit will be installed Indoors or Outdoors? Specify Ambient Temperature							
4. Specify Enclosure type							
4.13 Other Information							

5. SHORT CIRCUIT PROTECTION AND DISCONNECT:

5.1 None		5.2 Circuit Breaker		5.3 Non-Fusible Disconnect		5.4 Fusible Disconnect	
-----------------	--	----------------------------	--	-----------------------------------	--	-------------------------------	--

6. CONTROL CIRCUIT:

6.1 Common control (same as power to motor)? YES or NO	
6.2 Control Circuit Transformer. Specify secondary voltage	
6.3 Transformer with extra capacity (VA)? Specify	

7. COVER MOUNTED DEVICES: (if yes, enter quantities)

7.1 Start/Stop Push Buttons		7.2 H-O-A Selector Switch		7.3 Off-On Selector Switch		7.4 Motor Run Light		7.5 Other (Specify)	
------------------------------------	--	----------------------------------	--	-----------------------------------	--	----------------------------	--	----------------------------	--

8. OTHER SPECIFICATIONS:

**WEG Electric Corporation
1-800-ASK-4-WEG**

REV 2 13

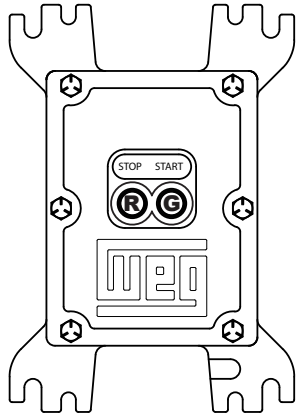
When completed, please contact your regional WEG sales specialist at 1-800-ASK-4-WEG (275-4934) for directions on submittal for quotation. Please complete as much as possible and then WEG can help you complete any further pertinent information to quote.



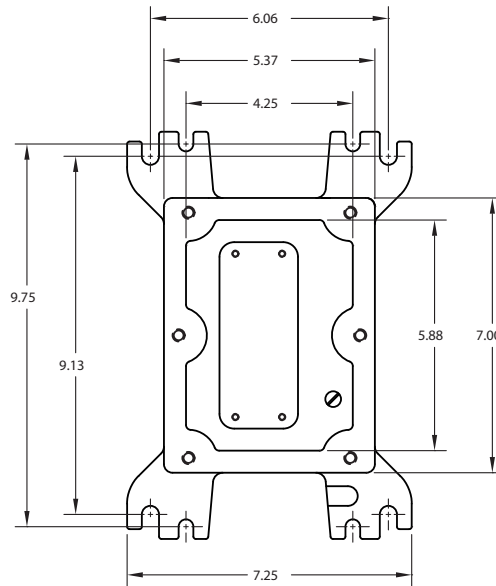
Explosion Proof Manual Starters

Dimensions (in) ESWX-M16

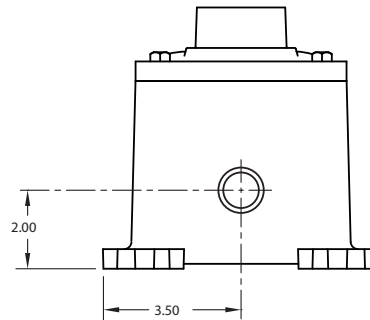
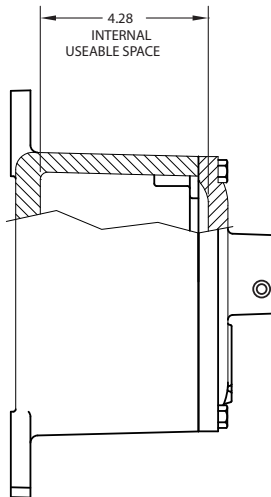
Box – X01



FRONT



FRONT
(w/DOOR REMOVED)



BOTTOM

Certifications

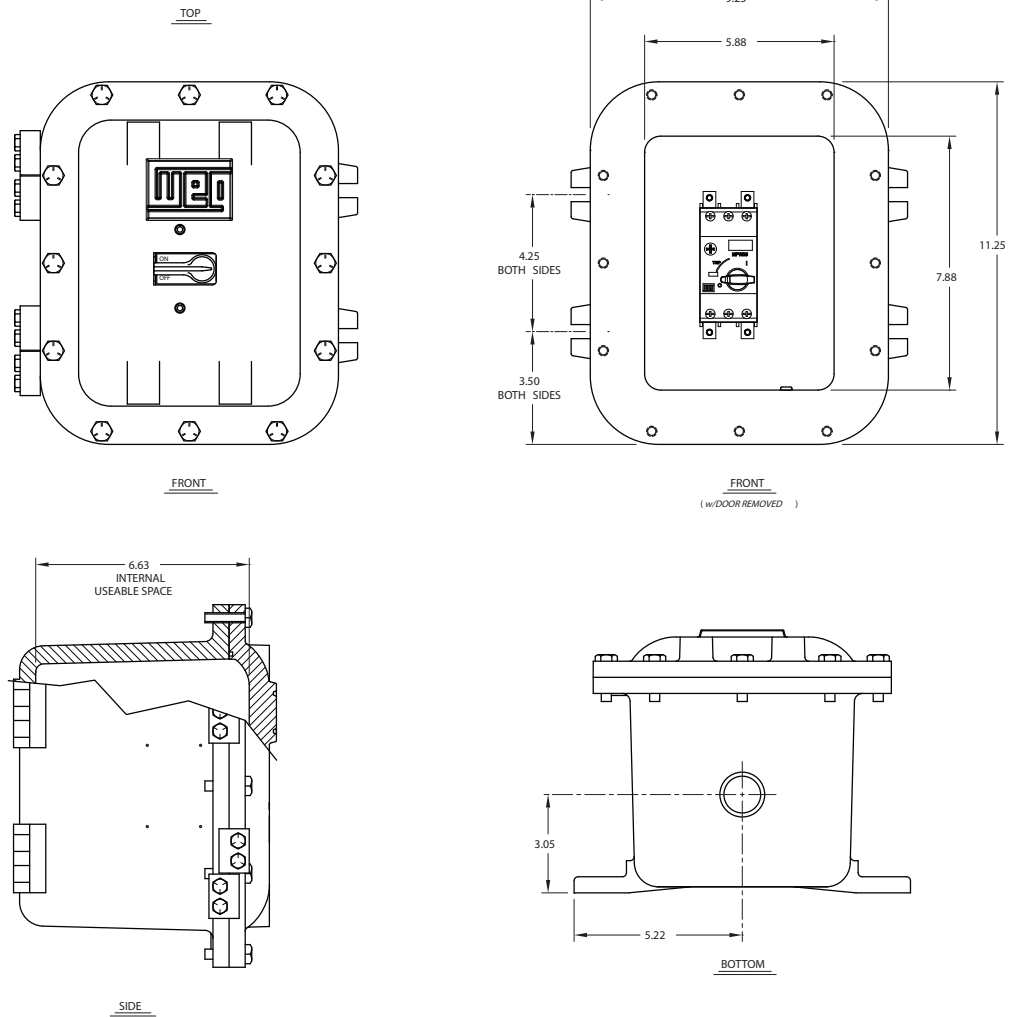
- Class I, Groups C & D
- Class II, Groups E, F, & aG
- UL Standard 1203 (Classified)
- NEMA 7 (C&D), 9 (E, F, & G)



Explosion Proof Manual Starters

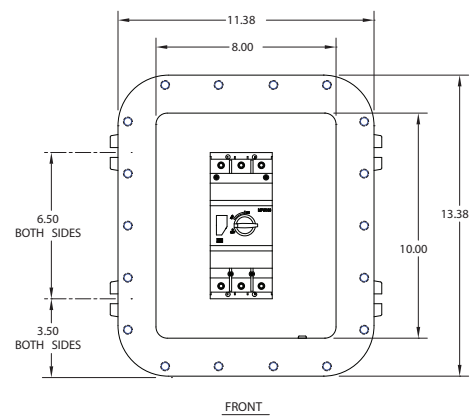
Dimensions (in) ESWX-M25 and ESWX-M65

Box – X02



Dimensions (in) ESWX-M100

Box – X03



Certifications

Class I, Groups C & D
 Class II, Groups E, F, & aG
 UL Standard 1203 (Classified)
 NEMA 7 (C&D), 9 (E, F, & G)



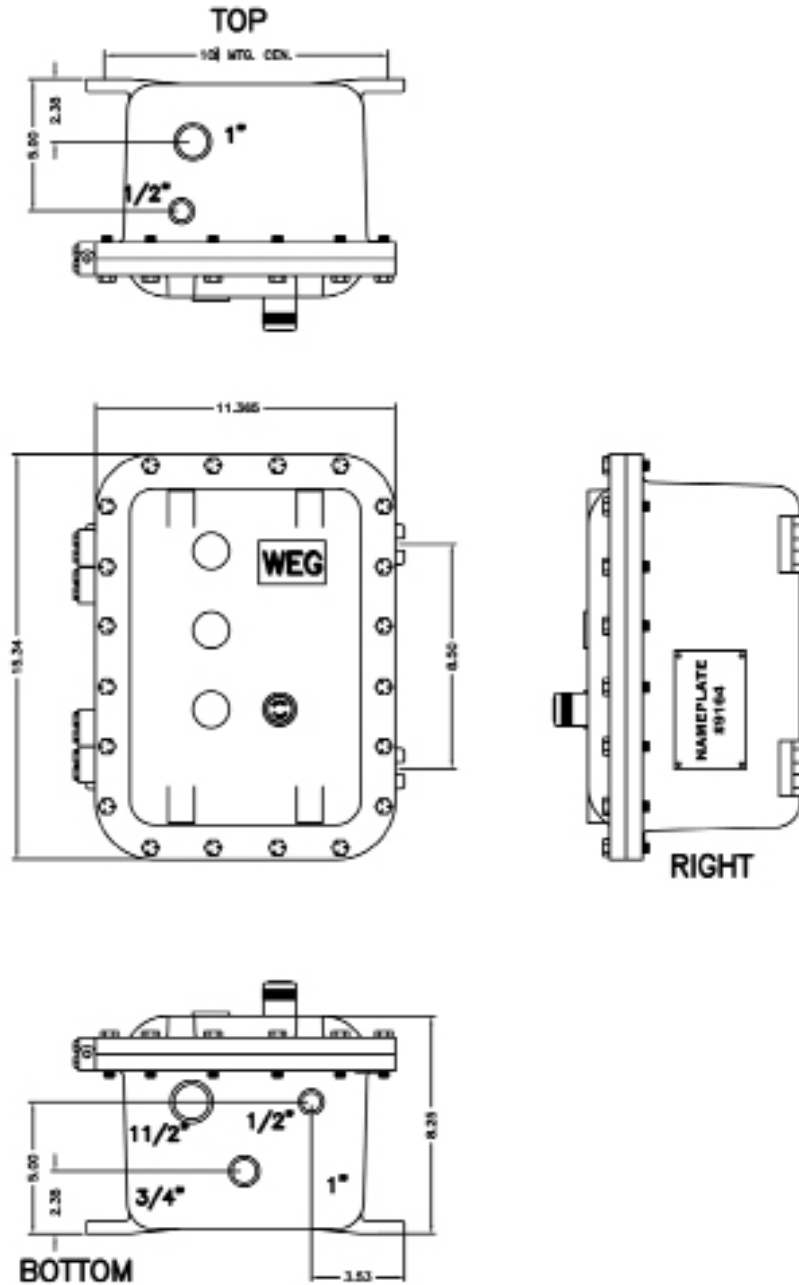


Explosion Proof Non-Combination Starters

Dimensions (in) ESWX SERIES

Type-NEMA 7/9 - Cast Aluminum Enclosure

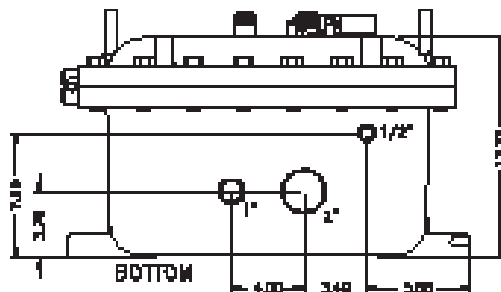
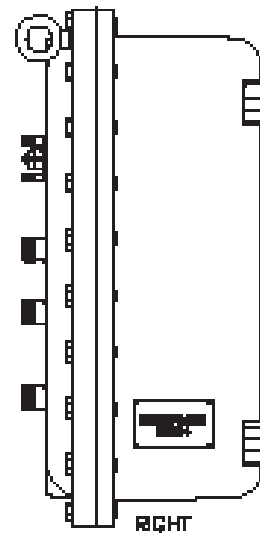
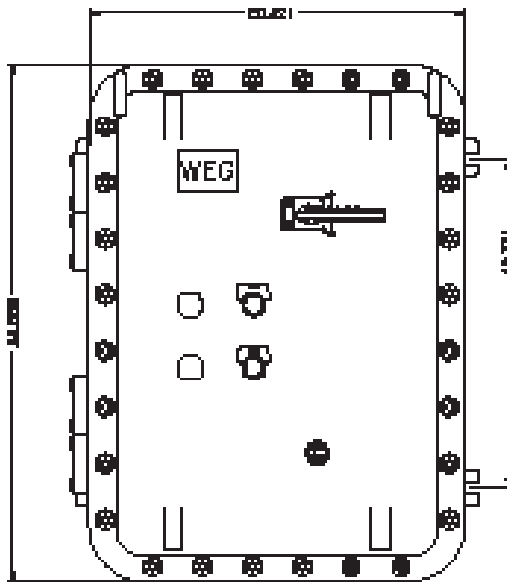
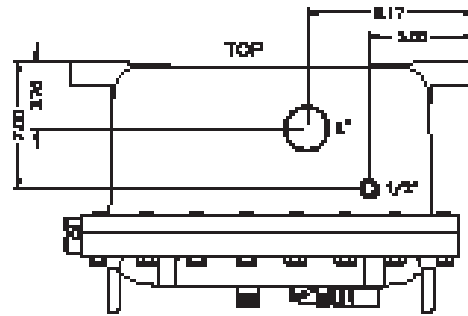
Size X04



Enclosed Combination Starters

Dimensions (in) ESWCX SERIES
Type-NEMA 7/9 - Cast Aluminum Enclosure

Size CX-1

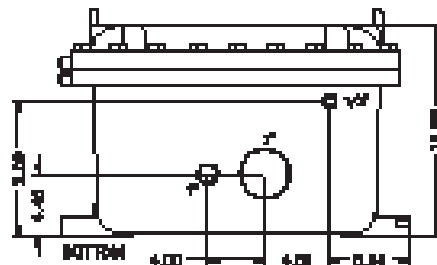
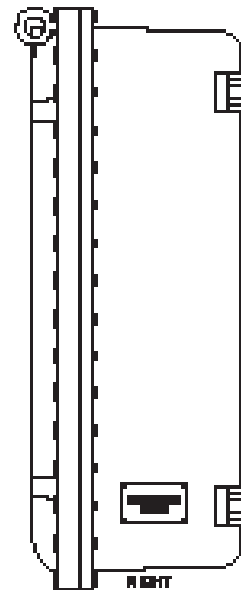
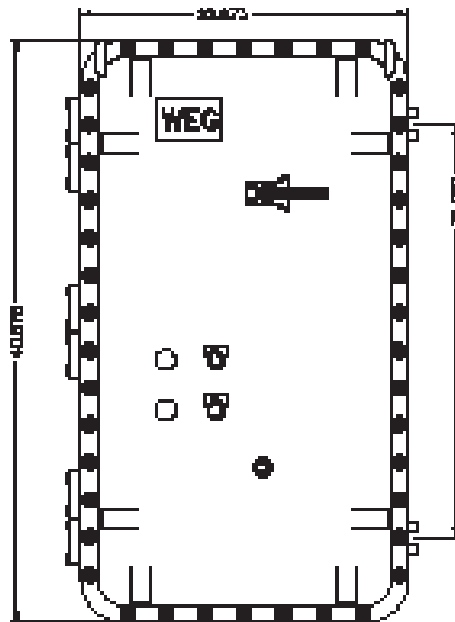
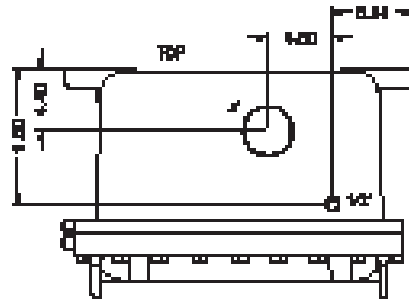




Enclosed Combination Starters

Dimensions (in) ESWCX SERIES
Type-NEMA 7/9 - Cast Aluminum Enclosure

Size CX-2





Transforming energy into solutions.

Controls
Mini - Contactors: up to 15HP @ 460 v or 25 amps - (highest rating in industry)
Contactors: up to 600HP @ 460v or 800 amps
Thermal Overload Relays: class 10, phase loss, current unbalance
Manual Motor Protectors: motor circuit protection, manual disconnect
Smart Relay: low voltage motor management system
Pushbuttons & Pilot Lights: 22 mm & 30 mm available - (LED pilot lights one of brightest in industry)
Timing & Motor Protection Relays: (8) timing functions, phase loss, phase sequence, over & under voltage, motor temperature
Enclosed Starters: combination & non-combination, metal & non-metal housings, NEMA 7/9
Terminal Blocks: screw terminal & spring connection
Molded Case Circuit Breakers: up to 800Amps, thermal & magnetic adjusted, 35kA & 65kA SCCR
Power Factor Correction Capacitors - Individual up to 25 kVAR & Enclosed up to 75 kVAR



WEG's scope of solutions is not limited to the products and solutions presented in this brochure.

Contact WEG for information on additional products and solutions.

For WEG's worldwide operations visit our website



www.weg.net



 **1-800-ASK-4WEG**

 **info-us@weg.net**

 **Duluth, GA**

USAXPSTARTERS

Information contained herein is subject to change without notice.