

Synchronous Alternators

WEG's extensive experience in the manufacturing of alternators in addition to modern design, production capacity and testing facilities, has resulted in a range of brushless synchronous alternators.

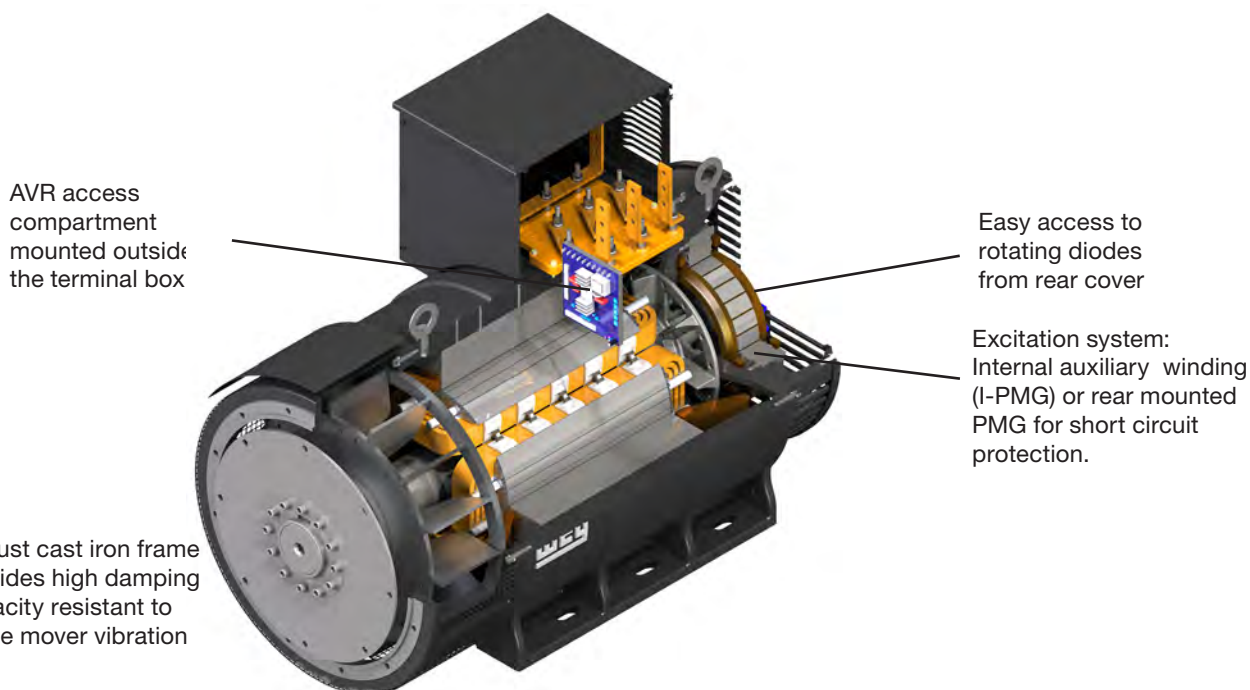
Available up to 4,200 kVA, the G Plus and AG10 lines are suitable for all emergency, prime power or continuous operation in these areas:

- Industrial
- Commercial
- Marine
- Telecommunication
- Mining
- Residential
- Irrigation
- Hospitals
- Rural areas
- Airports and others

Technical Features:

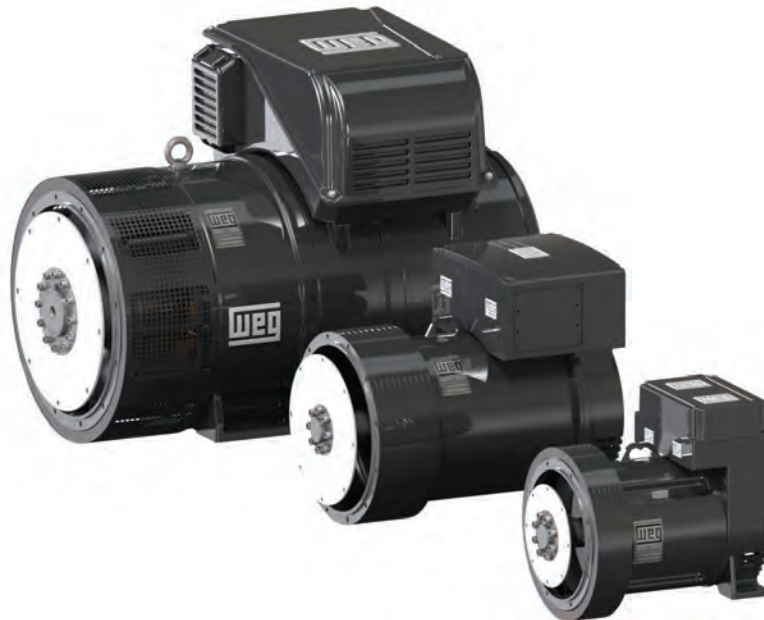
- Output power: up to 2,455 kVA (others upon request)
- Frames: 160 to 400 (IEC)
- Low voltage: 110 to 690 V
- High voltage: 2,300 to 13,800 V (upon request)
- Frequency: 50 to 60 Hz
- Degree of protection: IP23 (standard), IP44 to IP55W (upon request)
- Insulation class: 180 °C (H) low voltage and 155 °C (F) high voltage
- Winding pitch: 2/3 (160 to 315)
- THD: $\leq 3\%$
- Number of poles: 4 poles (standard), 6 and 8 poles (upon request)
- Leads: 12 or 6 leads
- Vacuum Pressure Impregnation (VPI) with harsh environment epoxy winding protection as standard

Alternators



G Plus Line

Leads	Catalog Number	DT	SAE	480V - Y					List Price	Multi-Symbol
				240V - YY						
				80°C	105°C	125°C	150°C	163°C		
G Plus	12 161AIHS-S	kVA	4/7.5	15	17	18	20	20	\$3,206	LV ALT
		kW		12	13	15	16	16		
	12 161AIHS-3115M	kVA	3/11.5	15	17	18	20	20	\$3,206	LV ALT
		kW		12	13	15	16	16		
	12 161AIHI-S	kVA	4/7.5	21	23	26	29	30	\$3,468	LV ALT
		kW		17	19	20	23	23		
	12 161AIHI-311.5M	kVA	3/11.5	21	23	26	29	30	\$3,468	LV ALT
		kW		17	19	20	23	23		
	12 162AIVD-S	kVA	4/7.5	26	30	42	44	46	\$4,078	LV ALT
		kW		21	24	33	35	37		
	12 162AIVD-3115M	kVA	3/11.5	26	30	42	44	46	\$4,078	LV ALT
		kW		21	24	33	35	37		
	12 201AIHV-S	kVA	3/11.5	56	65	71	77	81	\$5,357	LV ALT
		kW		45	52	56	62	65		
	12 201AIHE-S	kVA	3/11.5	66	76	88	95	97	\$6,143	LV ALT
		kW		53	60	70	76	78		
	12 202AIVS-S	kVA	3/11.5	88	101	110	116	120	\$6,643	LV ALT
		kW		70	81	88	93	96		
12 202AIVJ-S	kVA	3/11.5	107	123	141	144	150	\$7,607	LV ALT	
	kW		86	98	113	115	120			
12 251AIHD-S	kVA	3/11.5	140	161	175	188	189	\$8,393	LV ALT	
	kW		112	129	140	150	151			
12 251AIHE-S	kVA	3/11.5	180	206	225	243	252	\$9,821	LV ALT	
	kW		144	165	180	194	202			
12 251AIHE-2115M	kVA	2/11.5	180	206	225	243	252	\$9,821	LV ALT	
	kW		144	165	180	194	202			



AG10 Line

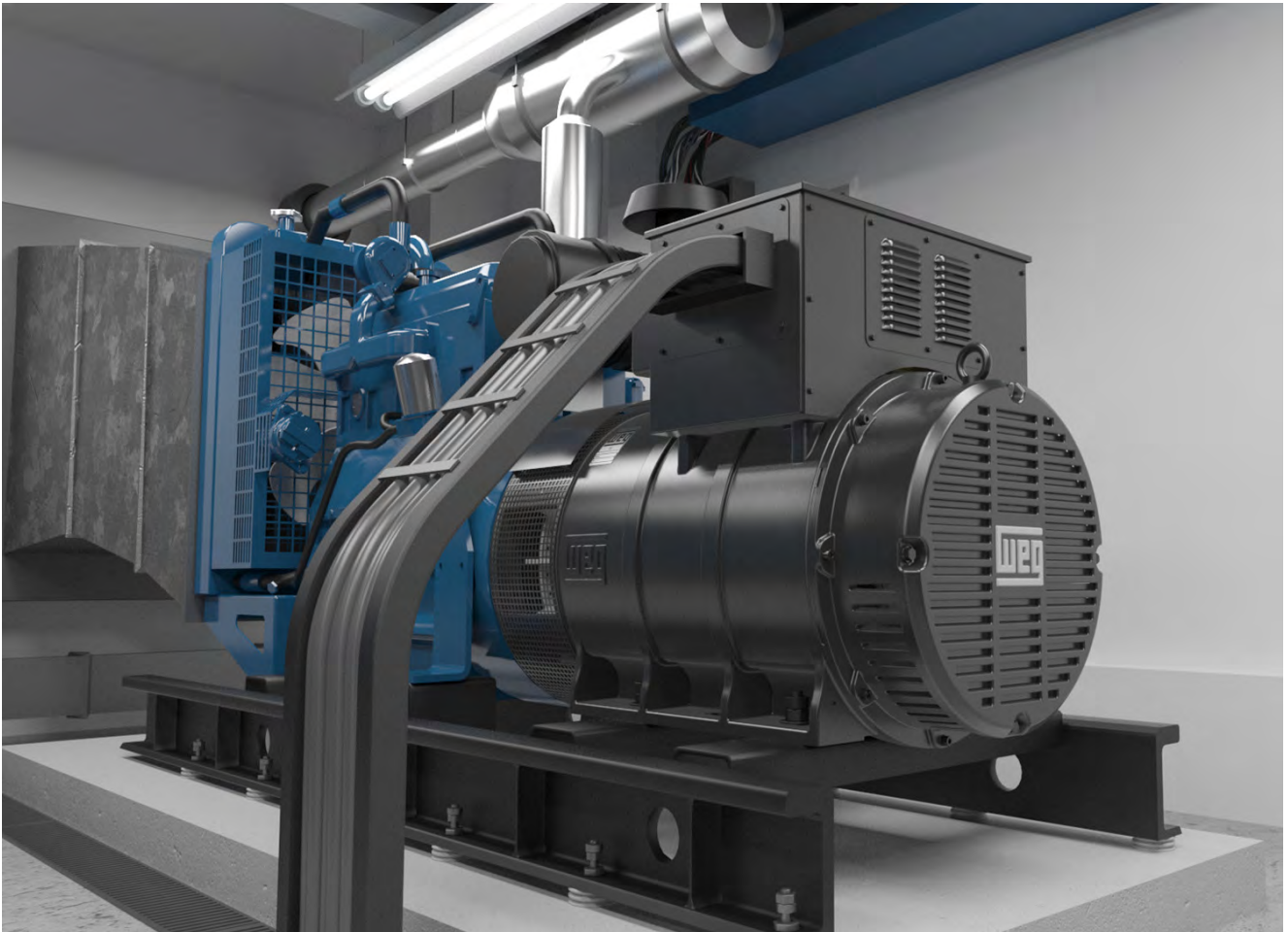
Leads	Catalog Number	DT	SAE	480V - Y					List Price	Multi-Symbol
				240V - YY						
				80°C	105°C	125°C	150°C	163°C		
12	250SI50AI-3115M	kVA	3/11.5	208	238	260	290	295	\$10,735	LV ALT
		kW		166	191	208	232	236		
12	250SI50AI-2115M	kVA	2/11.5	208	238	260	290	295	\$10,735	LV ALT
		kW		166	191	208	232	236		
12	250SI50AI-S	kVA	1/14	208	238	260	290	295	\$10,735	LV ALT
		kW		166	191	208	232	236		
12	250MI60AI-2115M	kVA	3/11.5	250	288	312	345	360	\$11,598	LV ALT
		kW		200	230	250	276	288		
12	250MI60AI-2115M	kVA	2/11.5	250	288	312	345	360	\$11,598	LV ALT
		kW		200	230	250	276	288		
12	250MI60AI-S	kVA	1/14	250	288	312	345	360	\$11,598	LV ALT
		kW		200	230	250	276	288		
12	250MI70AI-S	kVA	1/14	292	335	365	400	417	\$13,393	LV ALT
		kW		234	268	292	320	334		
12	250MI80AI-S	kVA	1/14	324	371	405	460	470	\$14,250	LV ALT
		kW		259	297	324	368	376		
12	280MI50AI-S	kVA	1/14	378	440	472	517	550	\$15,520	LV ALT
		kW		302	352	378	414	440		
12	280MI60AI-S	kVA	1/14	412	472	515	550	580	\$17,218	LV ALT
		kW		330	378	412	440	464		
12	315MI50AI-S	kVA	1/14	520	596	650	700	750	\$19,586	LV ALT
		kW		416	477	520	560	600		
12	315MI50AI-018M	kVA	0/18	520	596	650	700	750	\$19,586	LV ALT
		kW		416	477	520	560	600		
12	315MI60AI-S	kVA	1/14	570	650	710	780	825	\$21,964	LV ALT
		kW		456	520	568	624	660		
12	315MI60AI-018M	kVA	0/18	570	650	710	780	825	\$21,964	LV ALT
		kW		456	520	568	624	660		
12	315MI70AI-S	kVA	1/14	642	736	803	875	906	\$24,394	LV ALT
		kW		514	589	642	700	725		
12	315MI70AI-018M	kVA	0/18	642	736	803	875	906	\$24,394	LV ALT
		kW		514	589	642	700	725		
12	315LI90AI-S	kVA	1/14	832	953	1040	1100	1160	\$32,684	LV ALT
		kW		666	763	832	880	928		
12	315LI90AI-0118M	kVA	0/18	832	953	1040	1100	1160	\$32,684	LV ALT
		kW		666	763	832	880	928		
12	355MI70AI-S	kVA	0/18	1120	1283	1400	1450	1520	\$44,643	LV ALT
		kW		896	1026	1120	1160	1216		

Alternators

AG10

Modifications

Modifications		Description	List Price USD	Multi. Symbol
E-35	Space heater 120V	160 - 200 models	\$350	LV ALT
E-40	Space heater 240V			
E-35	Space heater 120V	250 - 280 models	\$425	LV ALT
E-40	Space heater 240V			
E-35	Space heater 120V	315 - 400 models	\$450	LV ALT
E-40	Space heater 240V			
PM-10	External PMG	250 models	\$1,950	LV ALT
PM-20	External PMG	280 models	\$2,025	
PM-20	External PMG	315 - 400 models	\$2,450	



- Models in blue text are NEMA Premium Efficiency

- Models in green text are NEMA Super Premium Efficiency

Catalog Notes

1	1.0 Service Factor	31	Rating is suitable for 1.0SF @ 50Hz. Also suitable for next lower HP @ 1.15SF 50Hz
2	Aluminum Frame with Removable Feet	32	Suitable for 1.15SF @ 50°C ambient
3	Automatic Reset Thermal Overload Protector	33	Suitable for 380V 60Hz when wired as YY (double WYE)
4	Manual Reset Thermal Overload Protector	34	AEGIS® Inside
5	CCW Rotation Viewed from Shaft End - Non Reversible	35	AEGIS® ring installation reduces the available "N-W" length
6	Compressor Duty	36	Super Premium
7	F2 Mount	37	Design A
8	F3 Mount	38	TEAO - Totally Enclosed Air Over
9	Rolled Steel Frame - Cannot be modified with T Box on opposite side	39	Cannot be modified with T Box on opposite side
10	Not Thermally Protected	40	NDE shaft with 3/8" drive socket
11	Metal fan - Not suitable for division 2	41	Also rated 230/460V 50Hz 1.0 SF
12	Reduced Frame	42	Rated 50°C ambient
13	Resilient Base	43	With insulated non drive end housing
14	Roller Bearing	44	With air deflector. Flange MOD not available
15	Round Body - Drip Cover Included	45	Also rated 380V 50Hz
16	Split-Phase Motor	46	56J shaft end with dual opposed threads (7/16-20 UNF-2A R.H and 3/8-16 UNF-2A L.H)
17	TENV - Totally Enclosed Non Ventilated	47	Motor designed with copper bar rotor
18	Z-Frame; Bigger Shaft Diameter and Bearings	48	Motor suitable for safe area only
19	105K Tempature Rise		
20	Round Body - Drip Cover NOT Included		
21	Stainless Steel Body		
22	Two Speed - Double Windings		
23	Two Speed - Single Winding		
24	Modified item. Usually ships in two weeks		
25	Brake rectifier suitable for 230VAC		
26	Brake rectifier suitable for 460VAC		
27	For Export Only (not to be used in the USA) due to Certification and/or Efficiency requirements.		
28	ODP Fan Cooled		
29	Standard Efficiency		
30	High Efficiency (EPACT)		