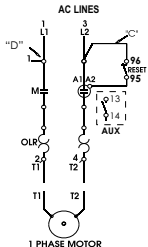


**WARNING:**

- Disconnect power before proceeding with any work on this equipment.
- Installation and maintenance by technical personnel only.
- Attend the national, regional and local standards and follow the operating instruction.

**WARRANTY :**

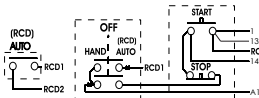
WEG provides a limited warranty for its products against defects in materials and workmanship.  
For more information access our website: [www.weg.net/warranty-automation](http://www.weg.net/warranty-automation)

**CONNECTIONS FOR NON-REVERSING STARTER****ELECTRICAL COMMAND****2 WIRE CONTROL**

NOT FOR USE WITH AUTO  
RESET OL RELAYS.

**3 WIRE CONTROL****HAND-OFF-AUTO WIRE CONTROL**

(FOR ESW SERIES ONLY)



CWM 9...18	14-10 AWG	15 lb-in	— LINE TERMINALS
CWM 25...32	14-8 AWG	16 lb-in	
CWB9...18	18-10 AWG	15 lb-in	— LOAD TERMINALS
CWB25...38	14-8 AWG	22 lb-in	
CWB40...80	14-2 AWG	45 lb-in	Use 75°C Copper Conductors only
CWM40	14-8 AWG	40 lb-in	
CWM50...80	14-1/0 AWG	40 lb-in	
CWM95...105	10-1/0 AWG	60 lb-in	
RW17D...27D	16-8 AWG	20 lb-in	
RW67D	10-3 AWG	35 lb-in	
RW117D	6-1/0 AWG	53 lb-in	

**MECHANICAL ASSEMBLY - CONTACT BLOCKS**

**NOTE:** POSITION 1 OF THE FLANGE CORRESPONDS TO POSITION **START** OR **AUTO** OF EACH OPERATOR.  
POSITION 2 OF THE FLANGE CORRESPONDS TO POSITION **STOP** OR **HAND** OF EACH OPERATOR.

**OVERLOAD RELAY INSTRUCTIONS**

**WARNING** - To provide continuous protection against fire or shock hazard, the whole overload relay must be replaced in case of burnout of one or more heater elements.

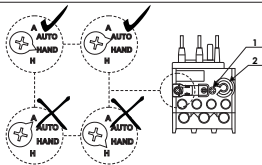
**Setting the Full Load Current (FLA).**

Set the overload relay to full load current by adjusting dial (1) so that the set marking aligns with the desired current (2).

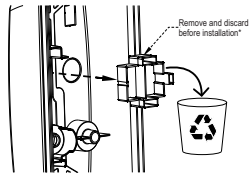
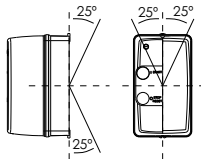
**NOTE:** Automatic reset is not intended for two-wire control devices.

\*Not suitable for OLRs with interchangeable heater elements.\*

\*CAUTION: Bonding between conduits must be provided.\*



**Note:** The conduit hubs are to be connected to the conduit before being connected to the enclosure.

**MOUNTING POSITIONS**

\*For PESW-B9, PESW-B12 and PESW-B18 only