



6655 SUGARLOAF PARKWAY
 DULUTH, GA 30097
 PH: 800-ASK-4WEG
 PH: 678-249-2000
 FX: 770-338-1632
 www.weg.net/us

30mm Industrial Push Button, Selector Switches & Pilot Lights



TABLE 1 - MOUNTING GASKETS FOR 30MM
 PUSH BUTTON & SELECTOR SWITCHES

PANEL THICKNESS	3/16" GASKETS	1/16" GASKETS
Less Than 0.080	1	5
0.080-0.132	1	4
0.133-0.185	1	3
0.186-0.238	1	2
0.239-0.291	1	1
0.292-0.344	0	3

TABLE 2 - MOUNTING GASKETS FOR
 30MM PILOT LIGHT

PANEL THICKNESS	3/16" GASKETS	1/16" GASKETS
Less Than 0.080	1	2
0.080-0.132	1	1
0.133-0.185	0	3
0.186-0.238	0	2
0.239-0.291	0	1

TABLE 3 - MOUNTING GASKETS FOR 30MM
 ILLUMINATED PUSH PULL OPERATOR

PANEL THICKNESS	3/16" GASKETS	1/16" GASKETS
Less Than 0.080	1	3
0.080-0.132	1	2
0.133-0.185	1	1
0.186-0.238	0	3
0.239-0.291	0	2
0.292-0.344	0	1

REMOTE TEST WIRING

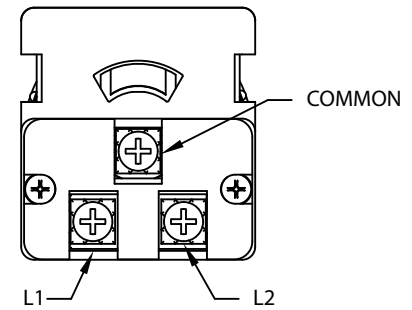
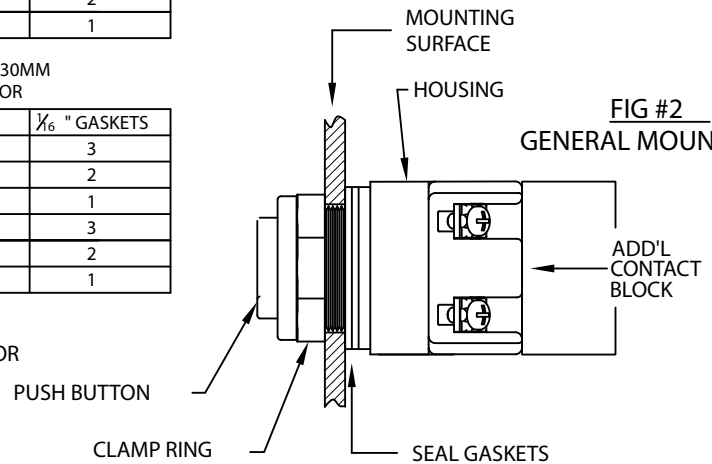


FIG #2
 GENERAL MOUNTING



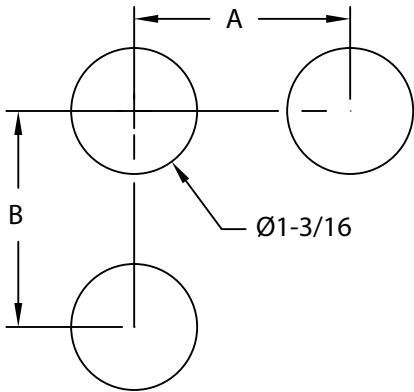
LIGHTS & ILLUMINATED OPERATOR INSTALLATION INSTRUCTIONS

- 1) TO ASSURE A GOOD SEAL, THE CORRECT NUMBER OF REAR PANEL GASKETS MUST BE USED - REFER TO TABLE S1-3.
- 2) INSERT UNIT FROM THE REAR OF PANEL, THROUGH THE PANEL MOUNTING HOLE - REFER TO FIGURE 2.
- 3) INSTALL ANY ENVIRONMENTAL SEALS/ REFLECTORS THAT WERE PROVIDED WITH LENS CAP. THIS IS A NECESSARY PART OF THE TYPE 4-4X ENVIRONMENTAL RATING.
- 4) SECURE THE OPERATOR BY INSTALLING THE CLAMP RING ON THE PANEL FRONT. SUFFICIENT TORQUE WILL COMPRESS THE REAR SEAL GASKETS MAKING THE OPERATOR TIGHT TO THE PANEL. THE WHITE INNER REFLECTOR SERVES A DUAL FUNCTION AS A LENS SEAL. WHEN INSTALLING THE COLORED LENS, SPECIAL CARE MUST BE TAKEN TO MAKE SURE THAT THE LENS TIGHTENS ALL THE WAY DOWN AND COMPRESSES THE INNER WHITE SEAL. IF IN DOUBT, REMOVE ONE ADDITIONAL 1/16" GASKET FROM BEHIND THE PANEL.

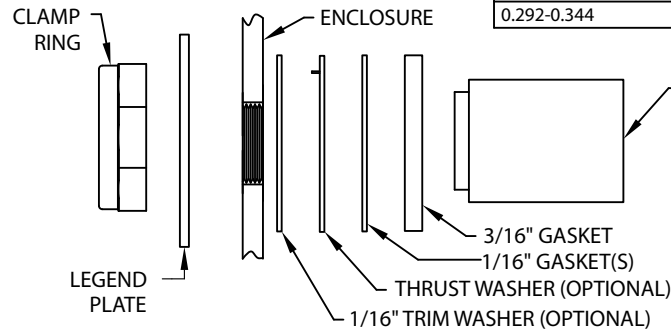
NOTE:

TO REPLACE BULB, REMOVE THE LENS CAP THEN PUSH INWARD AND ROTATE BULB CONUTER-CLOCKWISE (1/4 TURN). IF YOU ARE HAVING TROUBLE REMOVING BULB, USE LAMP REMOVAL TOOL (C3CONTROLS CAT# LRT). REPLACE BULB (CONTACT C3CONTROLS IF YOU HAVE QUESTIONS REGARDING BULB SPECIFICATIONS) BY PUSHING IT INTO THE SOCKET AND LOCKING IT INTO PLACE BY ROTATING CLOCKWISE (1/4 TURN).

FIG #1 MOUNTING HOLE PATTERN
 MOUNTING INFORMATION



SPACING	A	B
MIN	2"	2"
STANDARD	2-1/4"	2-1/4"



OPERATOR INSTALLATION INSTRUCTIONS

- 1) AFTER REMOVING THE OPERATOR FROM IT'S PACKAGE, UNSCREW AND REMOVE THE CLAMP RING
- 2) TO ASSURE A GOOD SEAL, THE CORRECT NUMBER OF GASKETS MUST BE USED - REFER TO TABLES 1-3.
- 3) INSERT OPERATOR HOUSING FROM THE REAR OF PANEL, THROUGH THE PANEL MOUNTING HOLE - REFER TO FIGURE 2.
- 4) LOCATE THE PUSH BUTTON (CAP OR HANDLE) FOR PROPER ORIENTATION IN PANEL. ANY LEGEND PLATES, OPTIONAL THRUST OR TRIM WASHERS ARE TO BE ADDED AT THIS POINT.
- 5) SECURE THE OPERATOR BY INSTALLING THE CLAMP RING. SUFFICIENT TORQUE (25 TO 30 LB-IN) WILL COMPRESS THE SEAL GASKETS MAKING THE OPERATOR TIGHT TO THE PANEL. THE OPERATOR SHOULD NOT ROTATE IN THE HOLE WHEN TWISTED BY HAND
- 6) OPERATE THE UNIT TO OBSERVE PROPER CONTACT OPERATION.

NOTE:

CERTAIN SPECIAL OPERATORS REQUIRE INSTALLATION OF ADDITIONAL HARDWARE ITEMS. THESE ARE EVIDENT WHEN DISASSEMBLING SOME PORTION OF THE PRODUCT PRIOR TO PLACEMENT ON A PANEL. FOR EXAMPLE, THE POTENTIOMETER INSTALLATION REQUIRES THAT A SET SCREW BE REMOVED FROM THE KNOB PRIOR TO OPERATOR BEING INSERTED THROUGH HOLE IN MOUNTING SURFACE.



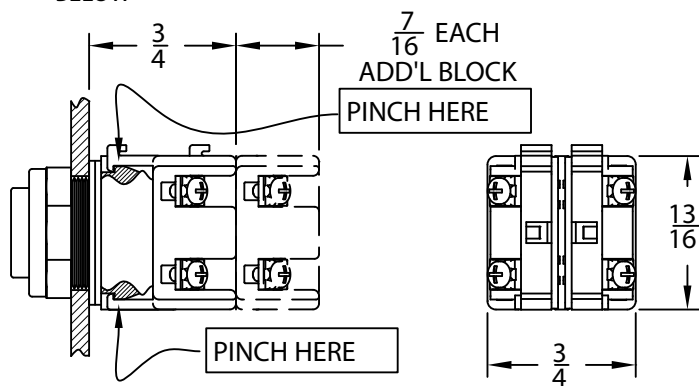
6655 SUGARLOAF PARKWAY
 DULUTH, GA 30097
 PH: 800-ASK-4WEG
 PH: 678-249-2000
 FX: 770-338-1632
 www.weg.net/us

30mm Industrial Push Button, Selector Switches & Pilot Lights



NOTE:

ALL CONTACT BLOCKS SNAP ON BACK OF OPERATORS. ORDINARY LOCATION AND LOGIC REED CONTACT BLOCKS ARE STACKABLE. SEE RATING INFORMATION BELOW



ACCESSORY IP-20 GUARDS:

Contact Blocks- Series CB -- Cat# CBIP20
 Full Voltage, Illum.PB & PTT Lights- Cat# FVIP20
 Transformer & Resistor Lights-- Cat# MLIP20

DEVICE RATINGS

ENVIRONMENTAL RATING: THESE DEVICES ARE FOR USE ON A FLAT SURFACE OF A TYPE 1, 3, 3R, 4, 4X, 11, 12, AND 13 ENCLOSURES.

Factory Sealed Contact Block



DEVICE RATINGS:

CLASS 1 DIV 2 GROUP B,C,D
 CLASS 1 ZONE 2 IIB+H2 -T6

A600 AC:

10AMPS, CONTINUOUS THERMAL (AC)
 7200 VA (MAKE) - AC
 720 VA (BREAK) - AC

	MAKE	BREAK
120 VAC	60A	6A
240 VAC	30A	3A
480 VAC	15A	1.5A
600 VAC	12A	1.2A

Q300 DC:

69 VA (MAKE & BREAK)
 250 VDC

CONTACT BLOCK INSTALLATION INSTRUCTIONS

- 1) DETERMINE THE PROPER POSITION OF THE CONTACT BLOCK TO PROVIDE THE PARTICULAR SWITCHING SEQUENCE DESIRED. FOR SELECTOR SWITCHES, REFER TO CATALOG CHARTS.
- 2) ALIGN THE SNAP LEGS OF THE CONTACT BLOCK WITH THE SLOTS ON THE OPERATOR HOUSING.
- 3) PUSH CONTACT BLOCK ONTO OPERATOR IN A LINEAR FASHION UNTIL YOU HEAR THE 'CLICK' OF THE SNAPS ENGAGING.
- 4) PINCH THE SNAPS TOGETHER TO MAKE SURE THAT THEY ARE SECURE ON THE OPERATOR. A SECOND 'CLICK' MAY OR MAY NOT BE HEARD.
- 5) MANUALLY OPERATE THE SWITCH IN YOUR HAND TO CONFIRM THE PROPER OPERATION OF THE DEVICE. AN OHM METER MAY BE USED TO CONFIRM THE SWITCH SEQUENCE.

DEVICE RATINGS (CONT.)

Ordinary Location Contact Block



A600 AC:

10AMPS, CONTINUOUS THERMAL (AC)
 7200 VA (MAKE) - AC
 720 VA (BREAK) - AC

P300 DC:

5AMPS, CONTINUOUS THERMAL (DC)
 138 VA (MAKE & BREAK)
 250 VDC

Hermetic Reed Contact Block



DEVICE RATINGS:

CLASS 1 DIV 2 GROUP A,B,C,D
 CLASS 1 ZONE 2 IIC T6

LRNO SERIES - 250 VAC / 40W (RES. ONLY)
 PRNO SERIES - B300/C600 (AC) / Q300 (DC)
 MPRNO SERIES - C300 (AC) / Q 150 (DC)
 MLRNO SERIES - 250 VAC (MAX) / 40 VA (IND) / 100W (RES)



6655 SUGARLOAF PARKWAY
 DULUTH, GA 30097
 PH: 800-ASK-4WEG
 PH: 678-249-2000
 FX: 770-338-1632
 www.weg.net/us

30mm Hazardous Location Push Button, Selector Switches, & Pilot Lights

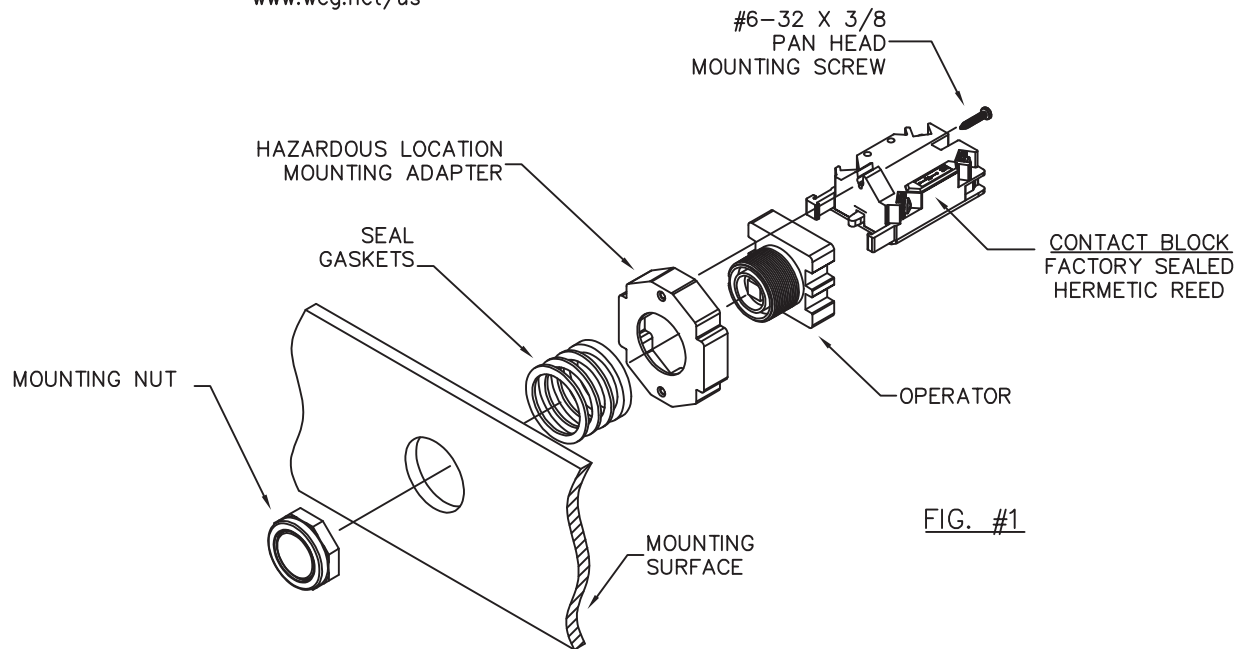


FIG. #1

SUITABLE FOR USE IN ENCLOSURE TYPES:
 1, 2, 3, 3R, 4, 4X, 12 AND 13

TABLE 1 – MOUNTING GASKETS FOR 30MM
 PUSH BUTTON & SELECTOR SWITCHES

PANEL THICKNESS	$\frac{3}{16}$ " GASKETS	$\frac{1}{16}$ " GASKETS
Less Than 0.080	1	4
0.080–0.132	1	3
0.133–0.185	1	2
0.186–0.238	1	1
0.239–0.291	0	3
0.292–0.344	0	2

TABLE 2 – MOUNTING GASKETS FOR
 30MM PILOT LIGHT

PANEL THICKNESS	$\frac{3}{16}$ " GASKETS	$\frac{1}{16}$ " GASKETS
Less Than 0.080	1	1
0.080–0.132	0	3
0.133–0.185	0	2
0.186–0.238	0	1

TABLE 3 – MOUNTING GASKETS FOR 30MM
 ILLUMINATED PUSH PULL OPERATOR

PANEL THICKNESS	$\frac{3}{16}$ " GASKETS	$\frac{1}{16}$ " GASKETS
Less Than 0.080	1	2
0.080–0.132	1	1
0.133–0.185	0	3
0.186–0.238	0	2
0.239–0.291	0	1

INSTALLATION INSTRUCTIONS:

APPLIES TO HERMETIC REED DEVICES
 FACTORY SEALED - DIV 2 / ZONE 2
 ADDITIONAL INFORMATION ON BACK

- BEFORE INSTALLING THE OPERATOR TO THE PANEL, REMOVE THE OPERATOR MOUNTING NUT AND SLIDE THE SEAL GASKETS AND THE MOUNTING ADAPTER BACK EXPOSING THE BOTTOM OF THE OPERATOR HOUSING. SNAP THE CONTACT BLOCK ONTO THE OPERATOR HOUSING. A DISCERNABLE "CLICK" – IS HEARD WHEN THE CONTACT BLOCK IS SNAPPED IN.

IMPORTANT – "PINCH" THE SNAP LEGS TO MAKE SURE THEY ARE SEATED. (SEE PINCH POINTS FIG 2 & 3)

- SLIDE MOUNTING ADAPTER (WITH THREADED METAL INSERTS) BACK INTO PLACE ON THE THREADED OPERATOR BODY OF THE HOUSING. INSERT THE #6 PAN HEAD SCREW (Provided with Contact Block) INTO THE SLOT PROVIDED IN THE MOUNTING BRACKET AND TIGHTEN IT TO THE ADAPTER. (RECOMMENDED TORQUE 7 LB-IN)
- SLIDE THE SEAL GASKETS BACK ONTO THE THREADED BODY OF THE HOUSING AND INSERT THE OPERATOR INTO THE HOLE IN THE PANEL. BE SURE TO USE THE PROPER NUMBER OF GASKETS FOR THE GIVEN PANEL THICKNESS.
- SECURE THE OPERATOR BY INSTALLING THE HANDLE/CAP AND TIGHTENING THE PANEL MOUNTING NUT.
- OPERATE THE UNIT TO OBSERVE THAT THE CONTACT BLOCKS ARE SECURE AND FUNCTIONING PROPERLY
- ALL WIRING FOR CONTACT BLOCK IS MARKED ON THE DEVICE



6655 SUGARLOAF PARKWAY
 DULUTH, GA 30097
 PH: 800-ASK-4WEG
 PH: 678-249-2000
 FX: 770-338-1632
 www.weg.net/us

Factory Sealed Contact Block



DEVICE RATINGS:

CLASS 1 DIV 2 GROUP B,C,D
 CLASS 1 ZONE 2 IIB+H2 -T6

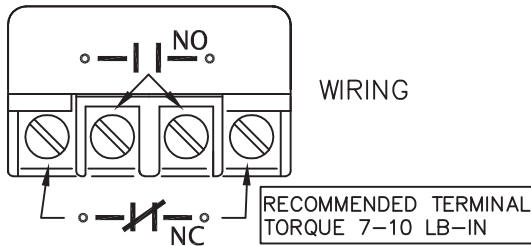
A600 AC:

10AMPS, CONTINUOUS THERMAL (AC)
 7200 VA (MAKE) - AC
 720 VA (BREAK) - AC

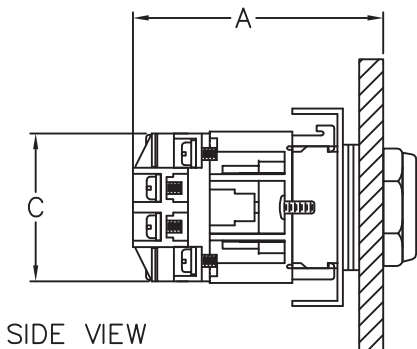
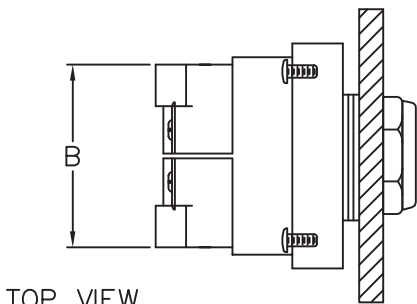
	MAKE	BREAK
120 VAC	60A	6A
240 VAC	30A	3A
480 VAC	15A	1.5A
600 VAC	12A	1.2A

Q300 DC:

69 VA (MAKE & BREAK)
 250 VDC



OPERATOR TYPE	DIMENSION		
	A	B	C
PUSHBUTTON (LINEAR)	2-1/2"	2-1/8"	1-3/4"
SELECTOR SWITCH (ROTATING)	2-3/4"	2-1/4"	1-3/4"



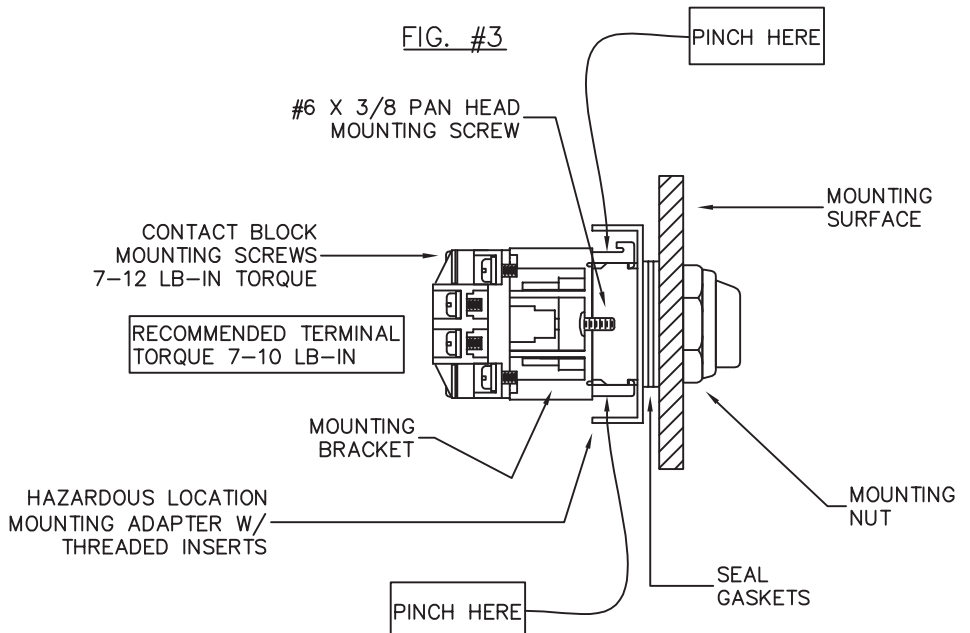
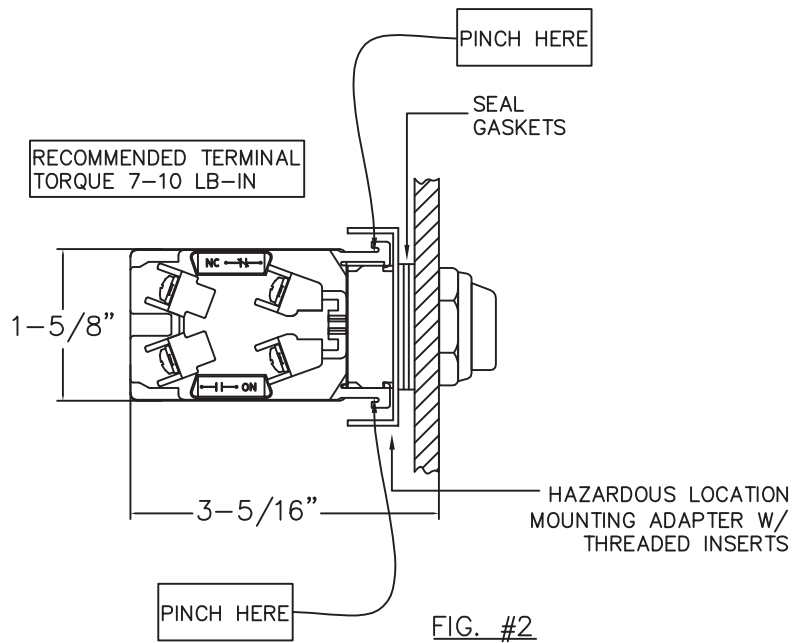
Hermetic Reed Contact Block



DEVICE RATINGS:

CLASS 1 DIV 2 GROUP A,B,C,D
 CLASS 1 ZONE 2 IIC T6

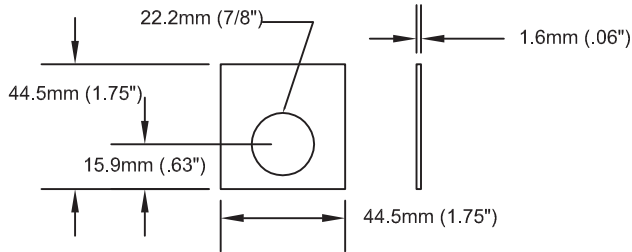
BC_ _ LR SERIES - 220 VAC / 40W (RES. ONLY)
 BC_ _ PR SERIES - B300/C600 (AC) / Q300 (DC)
 BC_ _ MP SERIES - C300 (AC) / Q 150 (DC)
 BC_ _ ML SERIES - 250 VAC (MAX) / 40 VA (IND) / 100W (RES)





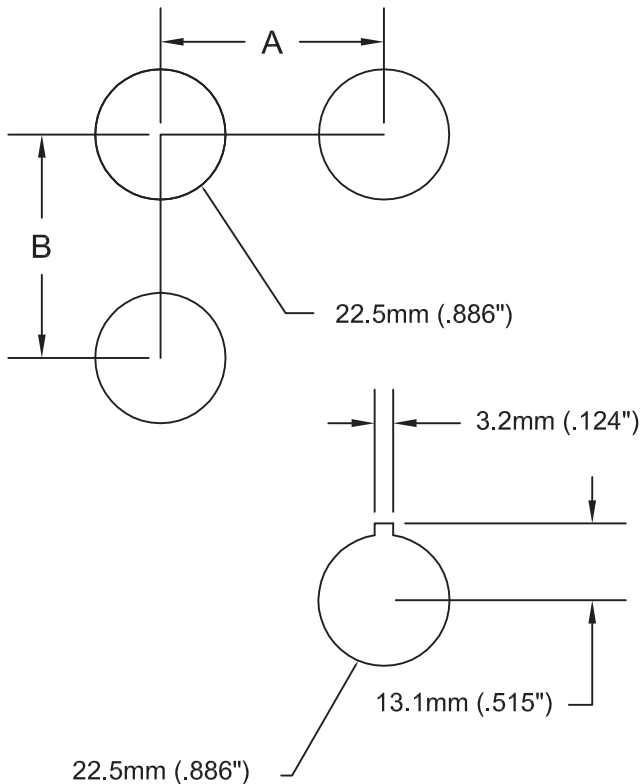
6655 SUGARLOAF PARKWAY
 DULUTH, GA 30097
 PH: 800-ASK-4WEG
 PH: 678-249-2000
 FX: 770-338-1632
 www.weg.net/us

LEGEND PLATE (APP30-P00)



MOUNTING HOLE PATTERN

SPACING	A	B
Minimum	31.8mm (1-1/4")	47.9mm (1-7/8")
Standard	38.1mm (1-1/2")	57.2mm (2-1/4")
Staggered Contacts	44.5mm (1-3/4")	44.5mm (1-3/4")



Mounting hole in panel 22.5mm (7/8")
 Mounting hole spacing (for standard legend plates)
 Horizontal & Vertical distance - 47.9mm (1-7/8") center to center.
 Fully assembled operators come standard with one 1.6mm (1/16") gasket.
 Maximum panel thickness 6mm (1/4")

ENVIRONMENTAL RATINGS

Suitable for use on flat surfaces of Type 1, 2, 3, 3R, 4/4X, 12, 13 & IP65 enclosures

CONFORMITY TO STANDARDS

UL 508



TEMPERATURE RANGE

Operating Temperature: -40 to +55° C (-40 to 131° F)
 Storage Temperature: -40 to 85° C (-40 to +185° F)

TERMINAL CAPACITY

#6 Steel, plated terminal screws with self lifting captive wire clamps.

Wire - AWG 22-12 CU

(Copper only - Solid & Stranded) [.5-4mm²]

One or two wire permitted per termination.

Recommended terminal tightening torque
 7lb-in (+3.0/-0.0 lb-in) - [0.8Nm].

ELECTRICAL RATINGS

AC Device Rating Designation

A600 (600VAC MAX) (AC-15)

7200 VA (Make)

720 VA (Break)

10A Continuous Thermal

DC Device Rating Designation

Q600 (600 VDC MAX) (DC-13)

69VA (Make & Break)

2.5A Continuous Thermal

Product installation instructions and dimensional drawings may be downloaded from our website,
www.weg.net/us

WARNING

Installation of WEG products must be in accordance with the NEC (U.S. National Electrical Code) regulations or local codes/standards per your application. Any violation of these safety requirements could result in a personal injury and/or result in damage to the equipment.