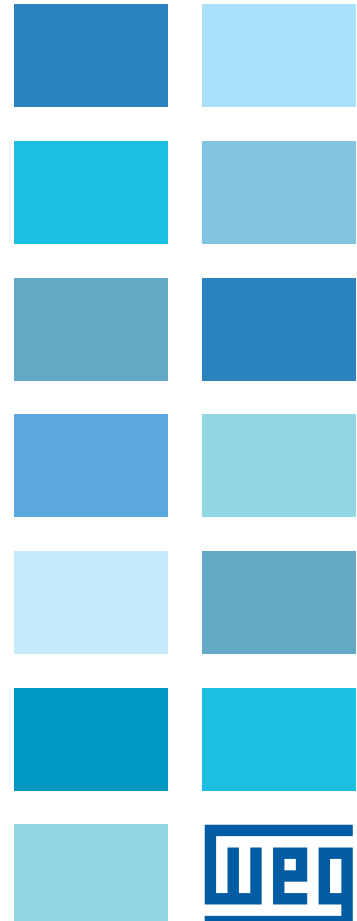
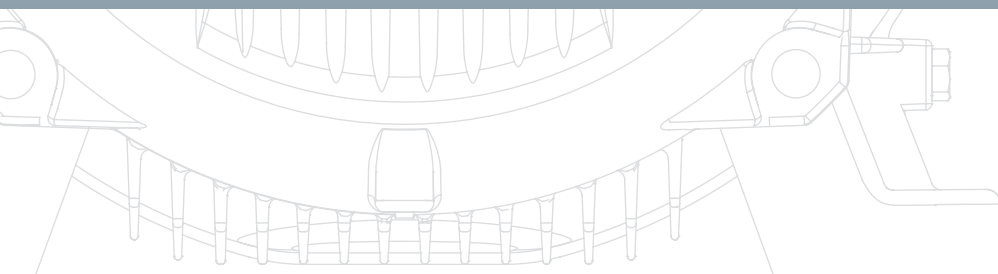
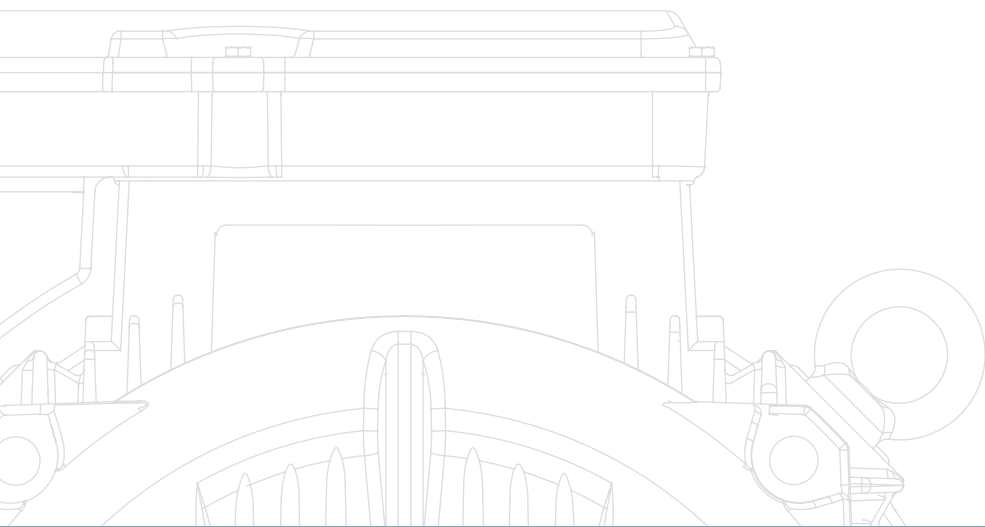


# W22 Quattro

## Super Premium Efficiency Motor

- Meet IE4 efficiency levels
- Low CO<sub>2eq</sub> emissions

**African Market**



## W22 Quattro

The W22 Quattro line was developed for users who consider energy saving a priority. The W22 Quattro is an environmentally friendly motor which, due to its exceptional efficiency performance, demands less energy from the grid. This in turn translates into a low total cost of ownership and the reduction of CO<sub>2eq</sub> emissions.

As a hybrid motor having a squirrel cage rotor fitted with high energy permanent magnets, the WQuattro is suitable for starting either direct on line or with a variable frequency drive.

When used with a variable frequency drive, the WQuattro may be operated with scalar control, making it ideal for variable torque applications such as pumps and fans.

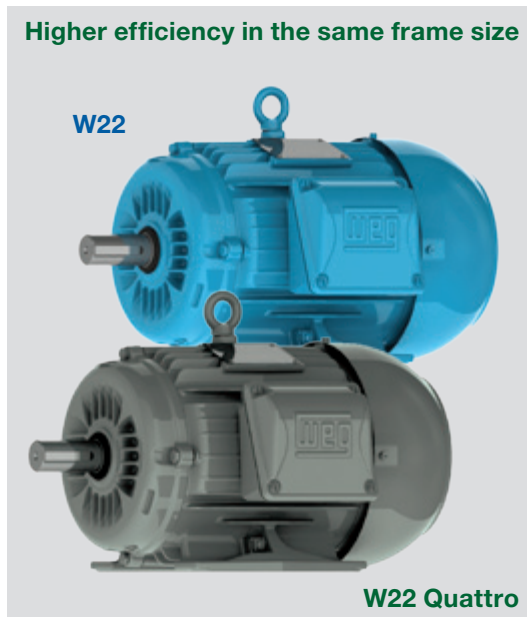
### Features

- Output: 0,37 up to 7,5 kW
- Frame: 80 up to 132M/L
- Insulation class: F
- Voltage: 525 or 550 V
- Polarity: 4 and 6 poles
- Color: RAL 7012
- Squirrel cage rotor and high energy permanent magnets (NdFeB)
- Synchronous speed (operation)
- D.O.L. starting, as an induction motor
- Suitable for variable speed applications with scalar control
- W22 mechanical platform
- Meet IE4 efficiency levels

### Benefits

- Interchangeable with induction motors (same output x frame ratio)
- No need for sensors/encoder in applications with frequency inverters
- No need for special protection overload relays
- Low bearing temperature – extended life and less maintenance
- Easy speed synchronization - multiple motors may be fed by the same inverter

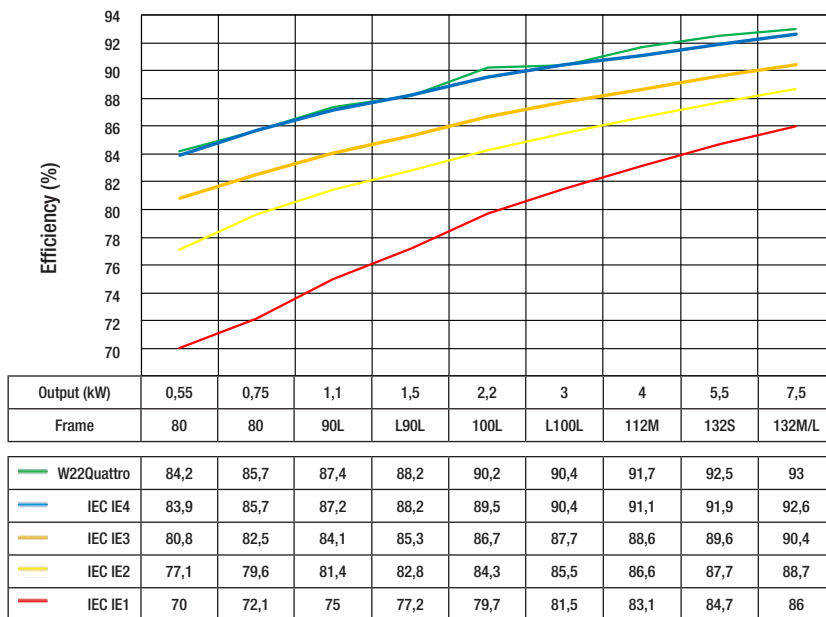
### Higher efficiency in the same frame size



### NEMA, IEC 60034-30-1:2014 and WEG Comparison

	NEMA	IEC 60034-30-1	WEG
Super Premium Efficiency	-	IE4*	W22 Quattro Super Premium Efficiency (exceeds IE4)
Premium Efficiency	NEMA Premium	IE3	W22 Top Premium Efficiency
High Efficiency	EPAct	IE2	W22 Premium Efficiency Plus
Standard Efficiency	-	IE1	W22 Standard Efficiency

### Efficiency - 4 poles - 50 Hz - IEC

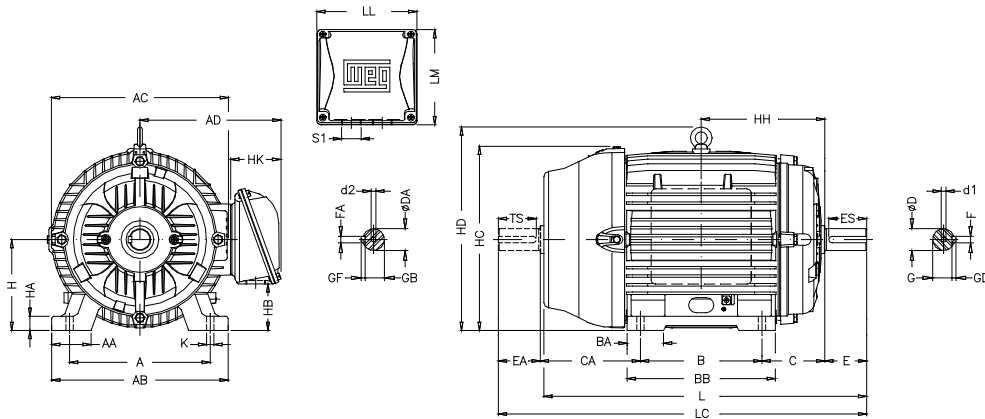


Efficiency values shown are according to IEC 60034-30-1.

## Electrical Features

Output		Frame	Full Load Torque (Nm)	Locked Rotor Current I <sub>L</sub> /I <sub>n</sub>	Locked Rotor Torque T <sub>L</sub> /T <sub>n</sub>	Breakdown Torque T <sub>b</sub> /T <sub>n</sub>	Inertia J (kgm <sup>2</sup> )	Weight (kg)	Sound dB(A)	400 V							
										Rated speed (rpm)	% of full load Efficiency			% of full load Power Factor			Full load current I <sub>n</sub> (A)
											50	75	100	50	75	100	
kW	HP																
IV poles - 1500 rpm - 50 Hz																	
0,55	0,75	80	3,50	6,0	2,2	1,8	0,0022	15,1	44	1500	80,4	83,6	84,2	0,61	0,77	0,85	1,11
0,75	1	80	4,78	6,1	2,4	2,3	0,0025	15,5	44	1500	79,0	84,0	85,7	0,58	0,74	0,82	1,54
1,1	1,5	90L	7,01	7,0	3,0	2,0	0,0050	23,0	49	1500	82,0	86,0	87,4	0,55	0,68	0,76	2,10
1,5	2	L90L	9,55	6,7	3,2	1,8	0,0058	23,2	49	1500	83,5	86,8	88,2	0,53	0,66	0,74	3,32
2,2	3	100L	14,0	7,3	3,6	2,2	0,0080	33,2	53	1500	86,0	89,0	90,2	0,67	0,80	0,87	4,05
3	4	L100L	19,1	6,6	3,5	1,9	0,0095	33,8	53	1500	86,5	89,5	90,4	0,60	0,75	0,82	5,84
4	5,5	112M	25,5	6,3	3,1	2	0,0153	41,8	56	1500	89,0	91,0	91,7	0,68	0,81	0,88	7,15
5,5	7,5	132S	35,0	8,2	3,8	2,5	0,0497	43,7	56	1500	89,0	92,0	92,5	0,76	0,88	0,93	9,23
7,5	10	132M/L	47,8	7,8	3,8	2,2	0,0606	61,5	56	1500	90,5	92,2	93,0	0,77	0,88	0,93	12,5
VI poles - 1000 rpm - 50 Hz																	
0,37	0,5	80	3,54	4,6	2,8	2,7	0,0024	15,0	43	1000	66,6	75,5	79,6	0,37	0,53	0,66	1,02
0,55	0,75	80	5,26	4,3	2,7	2,2	0,0026	16,0	43	1000	68,1	76,3	80,9	0,38	0,54	0,67	1,46
0,75	1	90S	7,17	5,2	2,5	1,6	0,0045	22,0	45	1000	80,3	84,5	85,5	0,58	0,73	0,85	1,49
1,1	1,5	90L	10,5	5,2	2,8	1,7	0,0052	24,0	45	1000	82,8	85,3	85,5	0,56	0,70	0,79	2,36
1,5	2	100L	14,3	5,1	3,2	2,4	0,0073	30,0	44	1000	81,3	85,7	87,6	0,49	0,63	0,74	3,34
2,2	3	112M	21,0	5,0	2,3	1,7	0,0105	39,0	52	1000	83,7	86,5	87,4	0,58	0,72	0,80	4,54
3	4	132S	28,7	5,7	3,5	2,2	0,0329	55,0	53	1000	86,6	89,6	90,7	0,55	0,69	0,77	6,20
4	5,5	132M	38,2	5,5	3,5	2,1	0,0390	59,0	53	1000	87,4	90,1	91,0	0,53	0,67	0,76	7,83
5,5	7,5	132M/L	52,6	4,9	3,4	1,7	0,0436	63,0	53	1000	87,6	90,1	90,9	0,50	0,65	0,73	12,0
Optional Frames																	
4	5,5	132S	38,2	5,5	3,5	2,1	0,0390	59,0	53	1000	87,4	90,1	91,0	0,53	0,67	0,76	7,83
5,5	7,5	132S	52,6	4,9	3,4	1,7	0,0436	63,0	53	1000	87,6	90,1	90,9	0,50	0,65	0,73	12,0

## Mechanical features



Frame	A	AA	AB	AC	AD	B	BA	BB	C	CA	Shaft											
											D	DA	E	EA	ES	F	FA	G	GB	GD	GF	TS
80	125	30,5	149	159	140	100	-	125,5	50	93	19j6	14j6	40	30	28	6	5	15,5	11	6	5	18
90S	140	36,5	164	179	157	100	-	131	56	104	24j6	16j6	50	40	36	8	5	20	13	7	5	28
90L	140	36,5	164	179	157	125	-	156	56	104	24j6	16j6	50	40	36	8	5	20	13	7	5	
L90L	140	36,5	164	179	157	125	-	156	56	104	24j6	16j6	50	40	36	8	5	20	13	7	5	36
100L	160	40	188	199	167	140	-	173	63	118	28j6	22j6	60	50	45	8	6	24	18,5	7	6	
L100L	160	40	188	199	167	140	-	173	63	118	28j6	22j6	60	50	45	8	6	24	18,5	7	6	
112M	190	40,5	220	222	192	140	-	177	70	128	28j6	24j6	60	50	45	8	8	24	20	7	7	
132S	216	35	248	272	220	140	55	187	89	150	38k6	28j6	80	60	63	10	8	33	24	8	7	45
132M	216	35	248	272	220	178	55	225	89	150	38k6	28j6	80	60	63	10	8	33	24	8	7	
132M/L	216	35	248	272	220	178/203	55	250	89	150	38k6	28j6	80	60	63	10	8	33	24	8	7	

Frame	H	HA	HB	HC	HD	HF	HH	HK	K	L	LC	LL	LM	S1	d1	d2	Bearings	
																	DE	NDE
80	80	8	43,5	163	-	87	100	59	10	277	313	108,5	99	M20x1,5	DM6	DM4	6204 ZZ	6203 ZZ
90S	90	9	45	182	-	90	106	67	10	304	350	115	104	M20x1,5	DM8	DM6	6205 ZZ	6204 ZZ
90L	90	9	45	182	-	90	118,5	67	10	329	375	115	104	M20x1,5	DM8	DM6	6205 ZZ	6204 ZZ
L90L	90	9	45	182	-	90	118,5	67	10	360	406	115	104	M20x1,5	DM8	DM6	6205 ZZ	6204 ZZ
100L	100	10	61,5	205	244	106,4	133	67	12	376	431	115	104	M20x1,5	DM10	DM8	6206 ZZ	6205 ZZ
L100L	100	10	61,5	205	244	106,4	133	67	12	420	475	115	104	M20x1,5	DM10	DM8	6206 ZZ	6205 ZZ
112M	112	10	54,5	235	280	112	140	80	12	394	448	140	133	M25x1,5	DM10	DM8	6207 ZZ	6206 ZZ
132S	132	16	75	266	319	132	159	80	12	452	519	140	133	2xM25x1,5	DM12	DM10	6308 ZZ	6207 ZZ
132M	132	16	75	266	319	132	178	80	12	489	557	140	133	2xM25x1,5	DM12	DM10	6308 ZZ	6207 ZZ
132M/L	132	16	75	266	319	132	190,5	80	12	515	582	140	133	2xM25x1,5	DM12	DM10	6308 ZZ	6207 ZZ

# WEG Worldwide Operations

## ARGENTINA

San Francisco - Cordoba  
Phone: +54 3564 421484  
[info-ar@weg.net](mailto:info-ar@weg.net)

Cordoba - Cordoba  
Phone: +54 351 4641366  
[weg-morbe@weg.com.ar](mailto:weg-morbe@weg.com.ar)

Buenos Aires  
Phone: +54 11 42998000  
[ventas@pulverlux.com.ar](mailto:ventas@pulverlux.com.ar)

## AUSTRALIA

Scoresby - Victoria  
Phone: +61 3 97654600  
[info-au@weg.net](mailto:info-au@weg.net)

## AUSTRIA

Markt Piesting - Wiener  
Neustadt-Land  
Phone: +43 2633 4040  
[watt@wattdrive.com](mailto:watt@wattdrive.com)

## BELGIUM

Nivelles - Belgium  
Phone: +32 67 888420  
[info-be@weg.net](mailto:info-be@weg.net)

## BRAZIL

Jaraguá do Sul - Santa Catarina  
Phone: +55 47 32764000  
[info-br@weg.net](mailto:info-br@weg.net)

## CHILE

Santiago  
Phone: +56 2 27848900  
[info-cl@weg.net](mailto:info-cl@weg.net)

## CHINA

Nantong - Jiangsu  
Phone: +86 513 85989333  
[info-cn@weg.net](mailto:info-cn@weg.net)

Changzhou - Jiangsu  
Phone: +86 519 88067692  
[info-cn@weg.net](mailto:info-cn@weg.net)

## COLOMBIA

San Cayetano - Bogota  
Phone: +57 1 4160166  
[info-co@weg.net](mailto:info-co@weg.net)

## ECUADOR

El Batan - Quito  
Phone: +593 2 5144339  
[ceccato@weg.net](mailto:ceccato@weg.net)

## FRANCE

Saint-Quentin-Fallavier - Isère  
Phone: +33 4 74991135  
[info-fr@weg.net](mailto:info-fr@weg.net)

## GERMANY

Türnich - Kerpen  
Phone: +49 2237 92910  
[info-de@weg.net](mailto:info-de@weg.net)

Balingen - Baden-Württemberg  
Phone: +49 7433 90410  
[info@weg-antriebe.de](mailto:info@weg-antriebe.de)

Homberg (Efze) - Hesse  
Phone: +49 5681 99520  
[info@akh-antriebstechnik.de](mailto:info@akh-antriebstechnik.de)

## GHANA

Accra  
Phone: +233 30 2766490  
[info@zestghana.com.gh](mailto:info@zestghana.com.gh)

## INDIA

Bangalore - Karnataka  
Phone: +91 80 41282007  
[info-in@weg.net](mailto:info-in@weg.net)

Hosur - Tamil Nadu  
Phone: +91 4344 301577  
[info-in@weg.net](mailto:info-in@weg.net)

## ITALY

Cinisello Balsamo - Milano  
Phone: +39 2 61293535  
[info-it@weg.net](mailto:info-it@weg.net)

## JAPAN

Yokohama - Kanagawa  
Phone: +81 45 5503030  
[info-jp@weg.net](mailto:info-jp@weg.net)

## MALAYSIA

Shah Alam - Selangor  
Phone: +60 3 78591626  
[info@wattdrive.com.my](mailto:info@wattdrive.com.my)

## MEXICO

Huehuetoca - Mexico  
Phone: +52 55 53214275  
[info-mx@weg.net](mailto:info-mx@weg.net)

Tizayuca - Hidalgo  
Phone: +52 77 97963790

## NETHERLANDS

Oldenzaal - Overijssel  
Phone: +31 541 571080  
[info-nl@weg.net](mailto:info-nl@weg.net)

## PERU

La Victoria - Lima  
Phone: +51 1 2097600  
[info-pe@weg.net](mailto:info-pe@weg.net)

## PORTUGAL

Maia - Porto  
Phone: +351 22 9477700  
[info-pt@weg.net](mailto:info-pt@weg.net)

## RUSSIA and CIS

Saint Petersburg  
Phone: +7 812 363 2172  
[sales-wes@weg.net](mailto:sales-wes@weg.net)

## SOUTH AFRICA

Johannesburg  
Phone: +27 11 7236000  
[info@zest.co.za](mailto:info@zest.co.za)

## SPAIN

Coslada - Madrid  
Phone: +34 91 6553008  
[wegiberia@wegiberia.es](mailto:wegiberia@wegiberia.es)

## SINGAPORE

Singapore  
Phone: +65 68589081  
[info-sg@weg.net](mailto:info-sg@weg.net)

Singapore  
Phone: +65 68622220  
[watteuro@watteuro.com.sg](mailto:watteuro@watteuro.com.sg)

## SCANDINAVIA

Mölnlycke - Sweden  
Phone: +46 31 888000  
[info-se@weg.net](mailto:info-se@weg.net)

## UK

Redditch - Worcestershire  
Phone: +44 1527 513800  
[info-uk@weg.net](mailto:info-uk@weg.net)

## UNITED ARAB EMIRATES

Jebel Ali - Dubai  
Phone: +971 4 8130800  
[info-ae@weg.net](mailto:info-ae@weg.net)

## USA

Duluth - Georgia  
Phone: +1 678 2492000  
[info-us@weg.net](mailto:info-us@weg.net)

Minneapolis - Minnesota  
Phone: +1 612 3788000

## VENEZUELA

Valencia - Carabobo  
Phone: +58 241 8210582  
[info-ve@weg.net](mailto:info-ve@weg.net)

For those countries where there is not a WEG own operation, find our local distributor at [www.weg.net](http://www.weg.net).



WEG Group - Motors Business Unit  
Jaraguá do Sul - SC - Brazil  
Phone: +55 47 3276 4000  
[motores@weg.net](mailto:motores@weg.net)  
[www.weg.net](http://www.weg.net)

