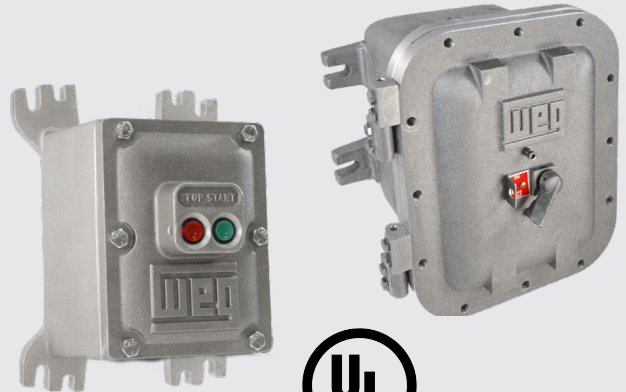


ESWX Series Explosion Proof Starters



Powerful Motor Control for Hazardous Areas

ESWX Series Explosion Proof Enclosed Starters
Class I, Groups C, D – Class II, Groups E, F, G



High performance and optimized solutions for motor starting and control. WEG offers full voltage non-reversing combination starters, ESWE series, up to 20 HP at 460VAC (40A) with or without control power transformers for three-phase applications.



UL File No. E202315

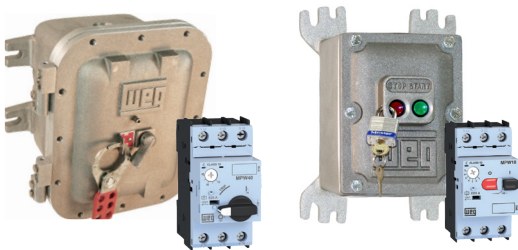
Standard Features

ESWX-M Series – Enclosed Manual Motor Starters

- Available up to 75HP (100A) at 460VAC
- NEMA 4X/7/9 enclosure
- Ambient temperature compensation from -4°F to +140°F
- ON/OFF-Rotary handle or START/STOP-Pushbuttons
- Lockable rotary handle mechanism for disconnect
- High short circuit interrupting rating up to 50kA at 480VAC
- Trip class 10 thermal overload protection
- Phase loss sensitivity protection
- Finger-safe protected terminals

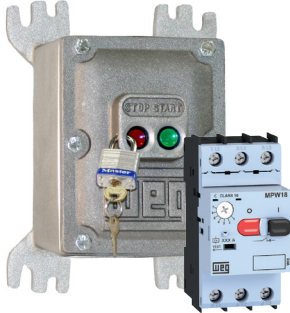
ESWX Series – Three-phase Non-Combo Enclosed Starters

- Available up to 75HP (105A) at 460VAC
- NEMA 7/9 enclosure with NEMA 4 gasket
- Ambient temperature compensation from -4°F to +140°F
- Motor Control: magnetic IEC contactor
- Overload Protection: thermal overload relay
- Control Devices:
 - Standard START, STOP, and RESET pushbuttons
 - H.O.A and Pilot Lights (available upon request)



Combination Starters – ESWX Series

ESWX-M18 with START/STOP Pushbuttons



Enclosure Specifications

- Versatile mounting format
- Corrosion resistant, copper free aluminum alloy body
- Bolted flange design
- Durable cast on lugs
- Watertight 'O' Rings for NEMA 4X applications
- Lockout device on cover
- Rotary lockable handle units include hinged door for easier access
- NEMA 4X / 7 / 9 housing
- ON/OFF-Rotary Handle or START/STOP-Pushbuttons

ESWX-M40/65/100 with ON/OFF-Rotary Handle



ESWX Three-phase Non-Combo Enclosed Starters



Motor Control for Hazardous Areas: Class I, Groups C & D - Class II, Groups E, F, G

WEG Explosion Proof Motors Starters are the perfect compliment for motor control in Hazardous and Industrial environments. Applications include Oil & Gas, Mining, and Chemical Processing industries.



WEG Electric Corp.
6655 Sugarloaf Pkwy.
Duluth, GA 30097
Phone: 1-800-ASK-4WEG
www.weg.net

