

# WEG MOTOR SCAN

Ready for Industry 4.0



Motors | Automation | Energy | Transmission & Distribution | Coatings

## HOW DOES IT WORK?

**WEG Motor Scan** measures the vibration, temperature and running hours of the electric motor diagnosing any faults.

The information is uploaded to the **cloud** via **smartphone** or **gateway**.

The data can be analyzed on the smartphone screen and an in-depth way on the **WEG IoT Platform**.

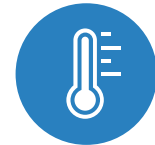


## BENEFITS FOR BETTER RESULTS

- Downtime reduction
- Maintenance routine optimization
- Increases equipment efficiency
- Reduction in spare parts
- Ready for Industry 4.0
- Add value to the product (OEM's)
- Add value to the service (maintenance companies)



VIBRATION



TEMPERATURE



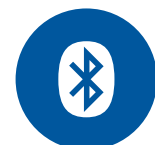
RUNNING HOURS



AUTOMATIC UPLOAD



DIAGNOSTICS



BLUETOOTH®



MANAGEMENT OF MAINTENANCE



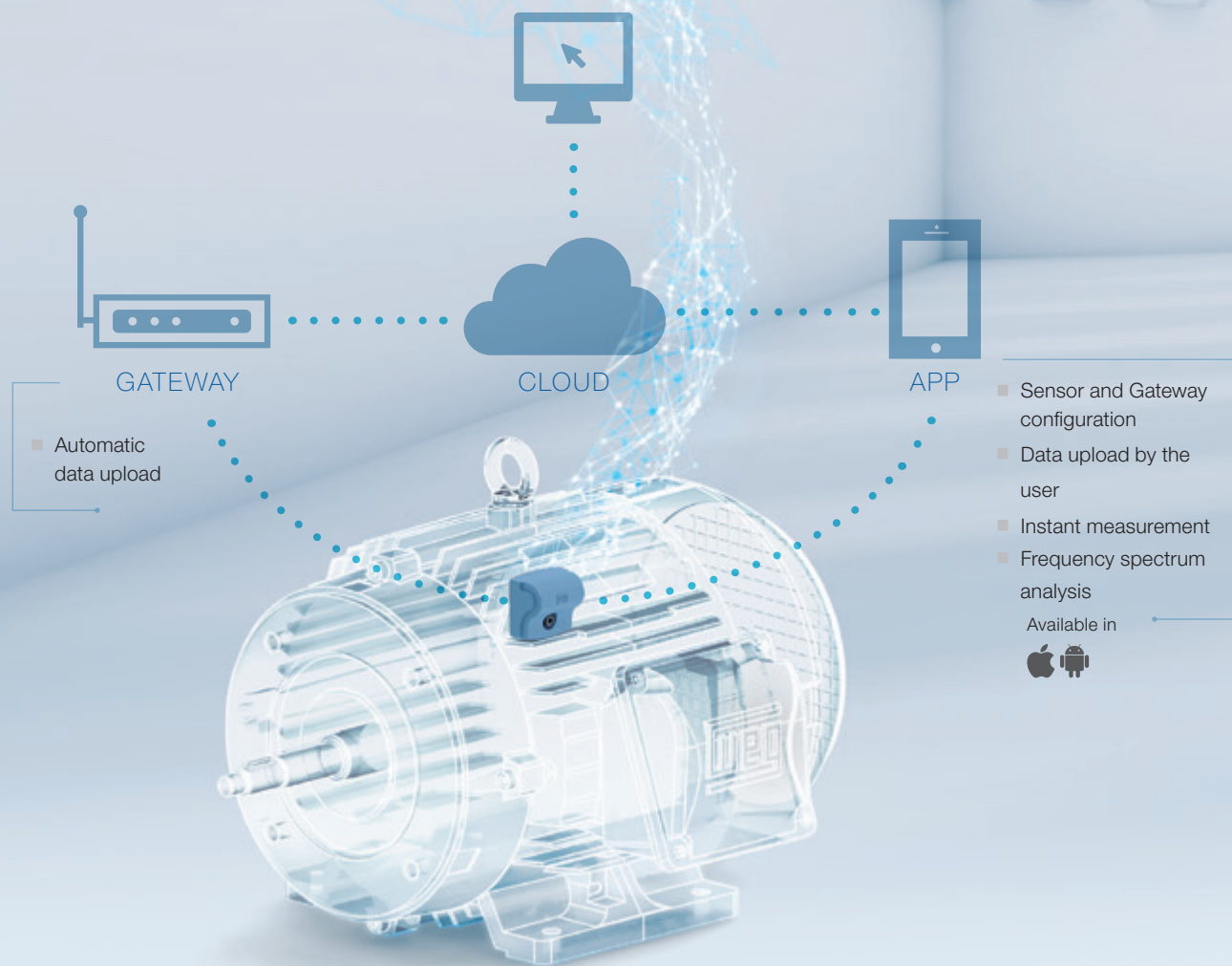
CONFIGURATION OF WARNING LIMITS

FULL MONITORING

# WELCOME TO THE INDUSTRY 4.0

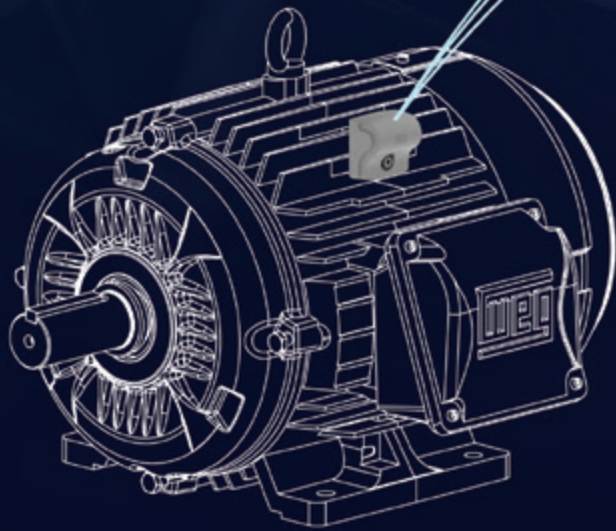
## WEG IOT PLATFORM

- Full view of stored data
- Failure diagnosis
- Warnings configuration
- Configuration of plants for easier management
- User options



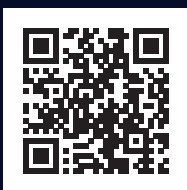
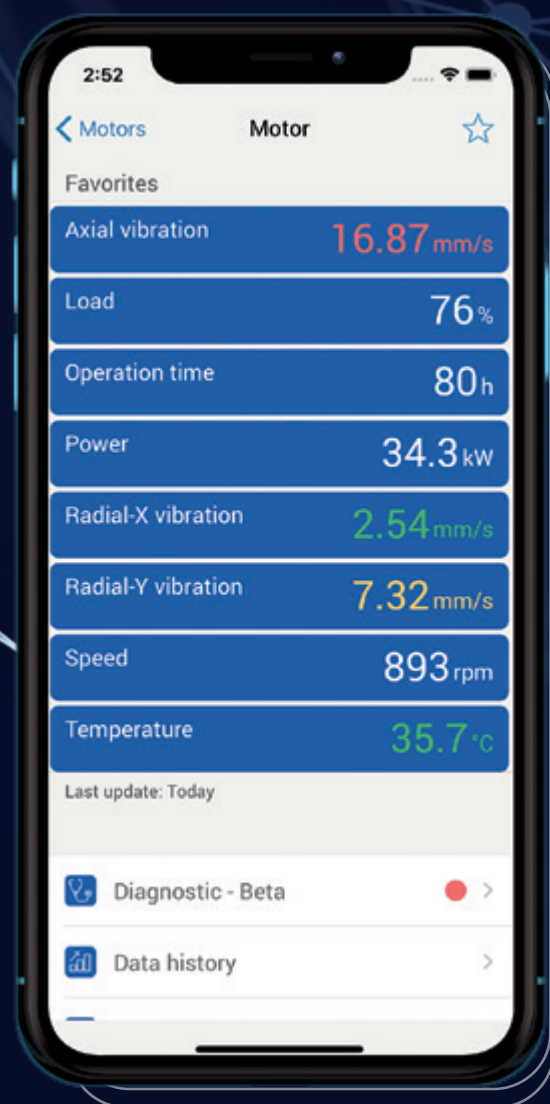
THE INDUSTRY WILL NEVER BE THE SAME AGAIN.

# GATEWAY WEG MOTOR SCAN. INDUSTRY 4.0 EVEN MORE EFFICIENT.



The **WEG Motor Scan Gateway** sends information in real time to the cloud through WiFi, ethernet or 3G / 4G cable, allowing immediate monitoring of remote motor performance. Additionally, the **WEG Motor Scan** sensor has been updated with new features.

Much more technology and connectivity for an even more efficient Industry 4.0.



[www.weg.net/wegmotorscan](http://www.weg.net/wegmotorscan)

# TECHNICAL INFORMATION

## Features

Available

Future

### Measurements

|                           |   |   |
|---------------------------|---|---|
| 3-Axis vibration (mm/s)   | • |   |
| Vibration spectrum        | • |   |
| Surface temperature (°C)  | • |   |
| Running hours (h)         | • |   |
| Energy consumption (kWh)* |   | • |
| Load (%)*                 | • |   |
| Speed (rpm)               | • |   |
| Frequency (Hz)            | • |   |
| Bearing Condition*        |   | • |
| Unbalancing*              | • |   |
| Misalignment*             | • |   |

\*Features not available when the motor is fed by VFD.

### Motor connection

|             |   |  |
|-------------|---|--|
| DOL         | • |  |
| Softstarter | • |  |
| VFD         | • |  |

### Sensor and WEG IoT Platform Features

|   |  |   |
|---|--|---|
| Open platform                           |  | • |
| New communication protocols             |  | • |
| New power supplies and new sensors      |  | • |
| Winding temperature                     |  | • |
| Advanced prediction of bearing failures |  | • |

### User Options

|                                       |   |  |
|---------------------------------------|---|--|
| Alarm settings                        | • |  |
| Notifications                         | • |  |
| Temperature Measurement (each 10 min) | • |  |
| Vibration Measurement (hourly)        | • |  |
| Plant management                      | • |  |
| Preventative maintenance events       | • |  |

### Degree of Protection

|      |   |  |
|------|---|--|
| IP66 | • |  |
|------|---|--|

### Certifications

|                             |   |   |
|-----------------------------|---|---|
| CE                          | • |   |
| Anatel                      | • |   |
| FCC, IC, RCM, ICASA, Subtel | • |   |
| Hazardous Location          |   | • |

### Gateway

|  |   |  |
|--|---|--|
|  | • |  |
|--|---|--|

MUCH MORE TECHNOLOGY AND  
CONNECTIVITY FOR AN EVEN MORE  
EFFICIENT INDUSTRY 4.0.



| Motor  |            |
|--|------------|
| Favoritos  |            |
| Carga  | 76%        |
| Potência   | 34,3 kW    |
| Temperatura  | 35,7 °C    |
| Tempo de operação                                      | 80h        |
| Velocidade   | 893 rpm    |
| Vibração axial   | 16,87 mm/s |
| Vibração radial X                                      | 2,54 mm/s  |
| Vibração radial Y                                      | 7,32 mm/s  |
| Última atualização: hoje                               |            |
| <input checked="" type="checkbox"/> Diagnóstico - Beta |            |
| <input checked="" type="checkbox"/> Histórico de dados |            |
| <input checked="" type="checkbox"/> Localização        |            |
| <input checked="" type="checkbox"/> Eventos            |            |



For WEG's worldwide  
operations visit our website



[www.weg.net](http://www.weg.net)



 +55 47 3276.4000

 [motores@weg.net](mailto:motores@weg.net)

 Jaraguá do Sul - SC - Brazil

Cod: 50079352 | Rev: 05 | Date (m/a): 11/2019.

The values shown are subject to change without prior notice.  
The information contained is reference values.